

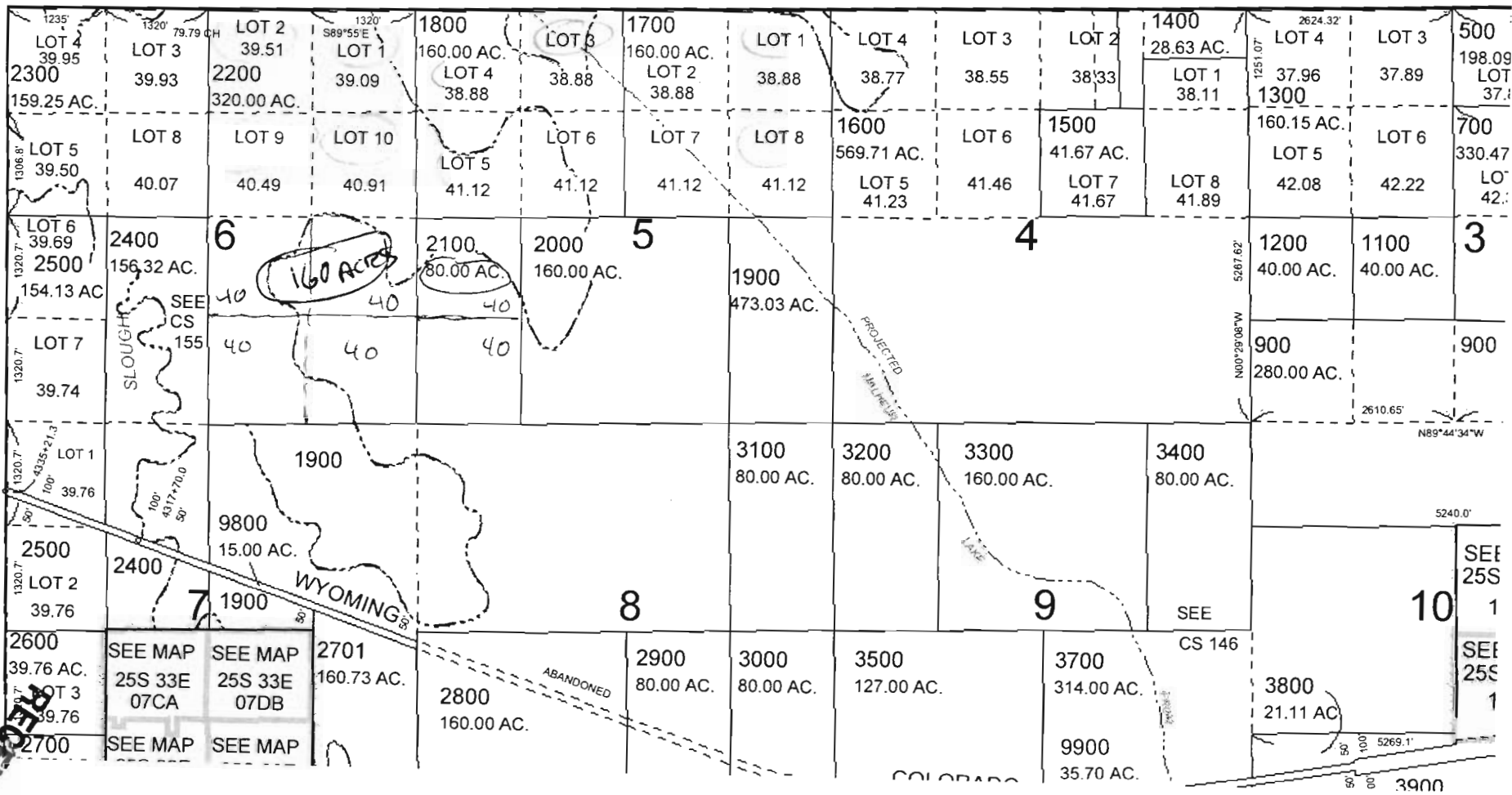
IAP WAS PREPARED FOR
ASSESSMENT PURPOSE ONLY

legal desc. okay
720

T.25S. R.33E. W.M.
HARNEY COUNTY

1" = 2000'
SEE MAP 24S 33E

SCALE IN FEET



WATER RESOURCES DEPT
SALFIM OREGON
1/11/19
RECEIVED

SECTION PLAT

Section 5 & 6

Township 25-5

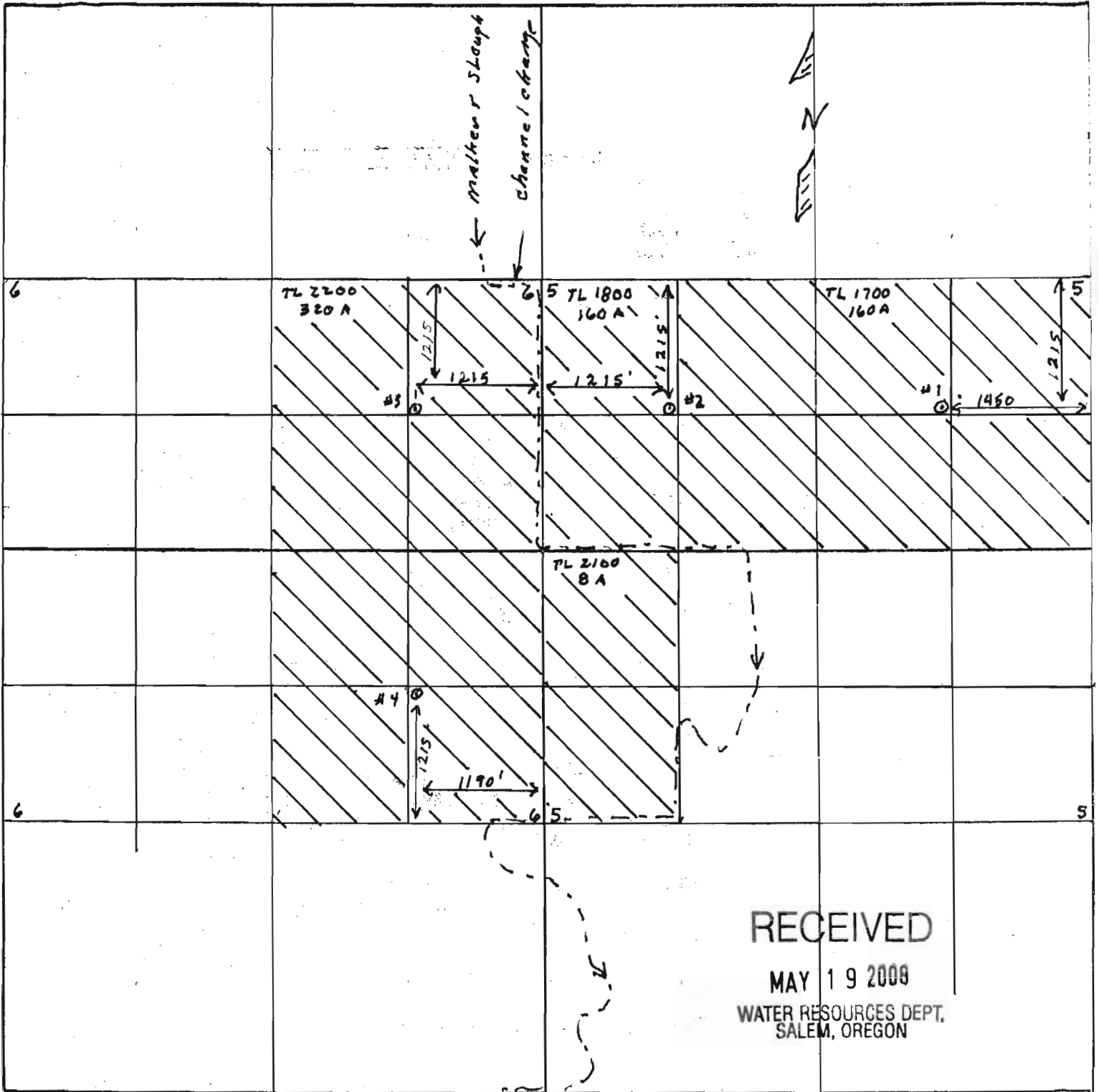
Range 33-E

County of Harney

State of OR

720

NORTH



RECEIVED

MAY 19 2008

WATER RESOURCES DEPT.
SALEM, OREGON

Remarks scale - 8" = 1 mile - 660' -

RECEIVED

MAY 29 2008

WATER RESOURCES DEPT.
SALEM, OREGON