

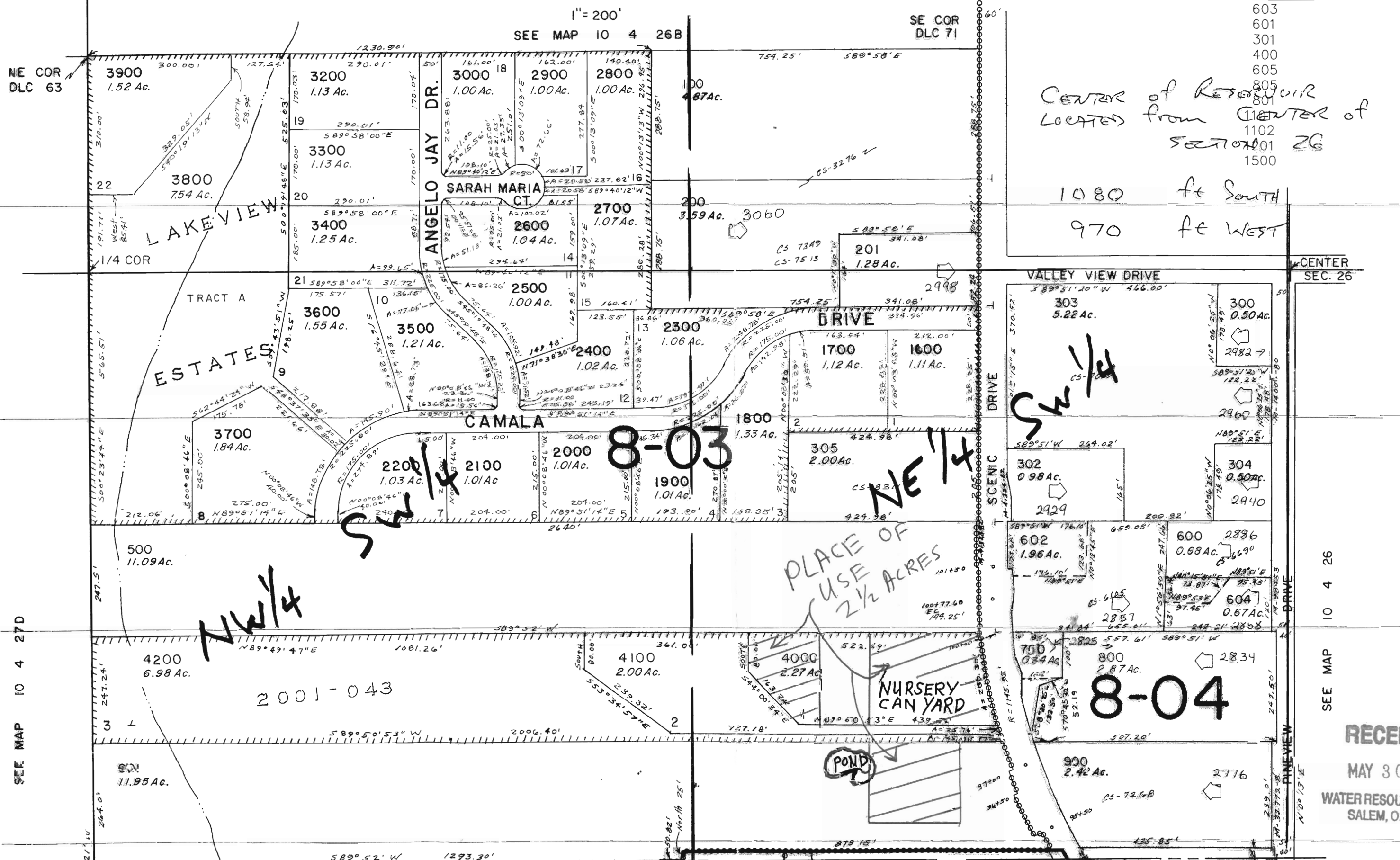
SW 1/4 SEC. 26 T.10S. R.4W. W.M.
BENTON COUNTY

THIS MAP WAS PREPARED FOR
ASSESSMENT PURPOSES ONLY

10 4 26C

REV: 09-12-2007
CANCELLED:

- 603
- 601
- 301
- 400
- 605
- 805
- 801
- 1102
- 101
- 26
- 1500



SEE MAP 10 4 26

RECEIVED
MAY 30 2008
WATER RESOURCES DEPT
SALEM, OREGON