

PR 9-15-07

CALA FARMS - MAP 6

SCALE: 1" = 1,320 FEET SECTION 7

WELL LOCATED FROM NE CORNER

1718 FE SOUTH 1560 FE WEST = Existing Water Rights



Acreage:
 #203: 13s-3w-7
 NENW= 8.46 acres
 NWNE= 39.54 acres
 NENE= 1.68 acres
 SWNE= 12.87 acres
 SENW= .13 acres

#202: 13s-3w-7
 SWNE= 18.65 acres
 SENE= 34.35 acres
 NENE= 11 acres
 NWSE= 4.43 acres
 NWNE= .46 acres

#200: 13s-3w-7
 SWNE= 9.35 acres
 NWSE= 36 acres
 SWSE= 40 acres

#400: 13s-3w-7
 NWSW= 8.33 acres
 NESW= 20 acres

#500: 13s-3w-18
 NWSW= 20 acres
 NESW= 7.22 acres

#600: 13s-3w-18
 SWSW= 8.35 acres
 SESW= 22 acres

#400: 13s-3w-17
 SESE= 20 acres
 SWSW= 19.87 acres
 NENE= 40 acres
 NWNW= 40 acres
 SESE= 40 acres
 SWNW= 40 acres

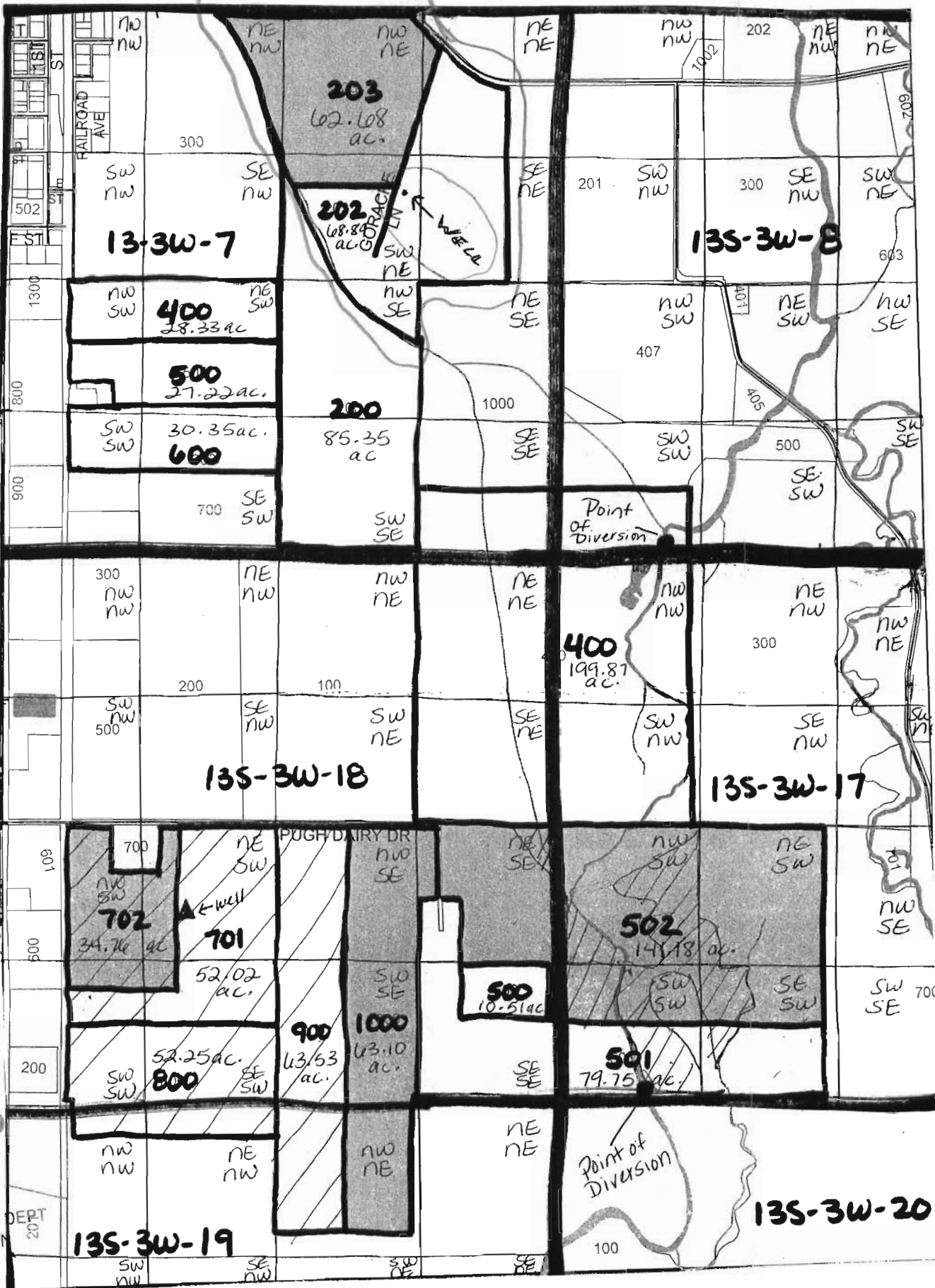
#1000: 13s-3w-18
 NWSE= 18 acres
 SWSE= 18 acres
 NWNE= 20.47 acres
 NESE= 6.63 acres

#502: 13s-3w-17
 NESE= *30.25 acres
 NWSW= *23.9 acres
 NESW= *37.5 acres
 SWSW= *5 acres
 SESW= *2.03 acres
 SESE= *NONE

#500: 13s-3w-18
 SESE= 10.51 acres

#501: 13s-3w-17
 NESE= 3.72 acres
 SESE= 26 acres
 SWSW= *9.5 acres
 SESW= *22.63 acres

* = Additional Acreage



RECEIVED

SEP 18 2007

WATER RESOURCES DEPT SALEM, OREGON

App No G-16930

Map	Tax Lot	Record #	Stage
12 3w 7	100 <i>Linda</i>	No records found.	
12 3w 15	100 <i>Murray</i>		
	101 <i>"</i>		
12 3w 18	501		
12 3w 16	100		
	103		
	104 <i>Murray</i>		
12 3w 20	201		
	301		
12 3w 21	300		
	301		
12 3w 28	400 <i>Cooper</i>	G-11738	Permit
		G-16150	Application
12 3w 29	700 <i>Farnell</i>	No records found.	
	400		
	500 <i>Home</i>	43279	Certificate
12 3w 31	502 <i>Dan's House</i>	GR-563	GR Claim
	401 <i>Hawkins</i>	16693	Certificate 30
12 3w 32	602	No records found.	
	101 <i>Wise</i>	32457	Certificate
12 4w 11	200 <i>Lisa</i>	No records found.	
12 4w 12	300		
12 4w 13	1200		
12 4w 14	200		
12 4w 36	100		
13 3w 6	600 <i>Highway</i>		
	500		
13 3w 7	202 <i>D-L</i>		
	203 <i>"</i>		
	400 <i>"</i>		
	500		
13 3w 17	600 <i>D-L</i>		
	400		
	500		
	501 <i>Conthorn</i>	46898	Certificate
13 3w 18	502	57060	Certificate 139
	701 <i>Dickson</i>		
	702		
	800	No records found.	
	900		
	1000		

RECEIVED

SEP 18 2007

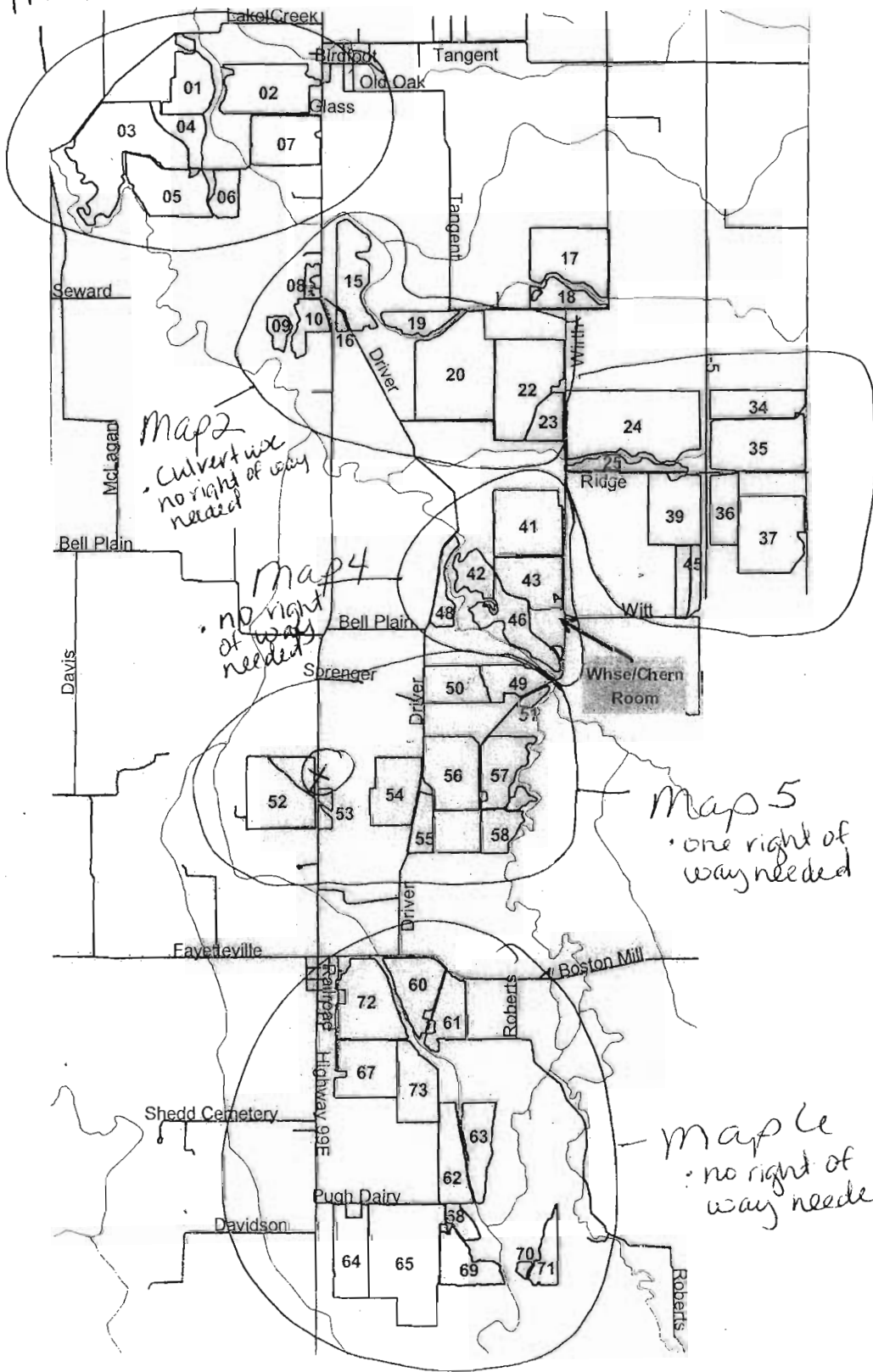
WATER RESOURCES DEPT
SALEM, OREGON

G-116930

CALA FARMS - OVERVIEW



Map 1 - no right of ways needed



Map 2
- Culvert use
no right of way needed

Map 4
- no right of way needed

Map 3
- culvert use
no right of way needed

Map 5
- one right of way needed

Map 6
- no right of way needed

RECEIVED

SEP 18 2007

WATER RESOURCES DEPT
SALEM, OREGON

App No G-10930