

# WATER RIGHTS APPLICATION MAP

T9S, R5W, WM

S 25, Taxlot 400 (also in S 26)

S 36, Taxlot 300 (also in S 35)

OLSEN AG – MULKEY HILL

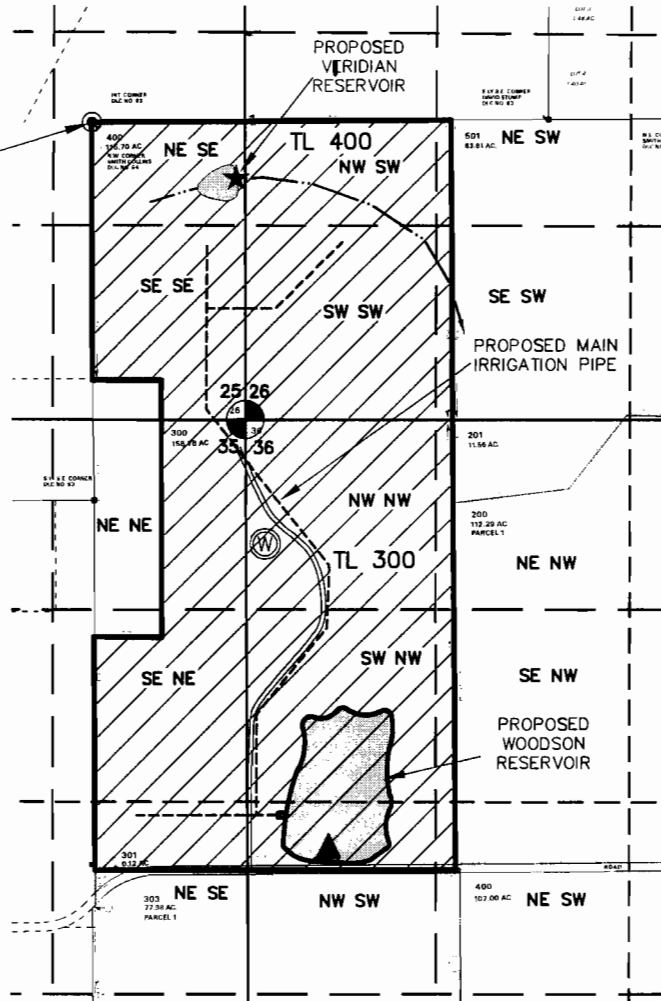
POLK COUNTY, OR

WILLAMETTE RIVER BASIN



NW corner  
Smith Collins  
DLC 64

IRRIGATION ACREAGE		
SEC. 25	NE SE	17.3 AC
	SE SE	29.5 AC
	<b>TOTAL</b>	<b>46.8 AC</b>
SEC. 26	NW SW	22.0 AC
	SW SW	40.0 AC
	NE SW	1.7 AC
	SE SW	3.6 AC
	<b>TOTAL</b>	<b>67.3 AC</b>
SEC. 35	NE NE	17.4 AC
	SE NE	29.5 AC
	NE SE	11.1 AC
	<b>TOTAL</b>	<b>58.0 AC</b>
SEC. 36	NW NW	40.0 AC
	NE NW	3.6 AC
	SW NW	40.0 AC
	SE NW	3.9 AC
	NW SW	14.0 AC
	NE SW	1.4 AC
	<b>TOTAL</b>	<b>102.9 AC</b>
<b>TOTAL IRRIGATED AC</b>		<b>275.0</b>



- ⊙ Well is 2900 ft south and 1210 ft east of NW corner Smith Collins DLC 64
- ▲ Woodson Point of Diversion is 5000 ft south and 1650 ft east of NW corner Smith Collins DLC 64.
- ★ Veridian Point of Diversion is 400 ft south and 990 ft east of NW corner Smith Collins DLC 64

----- Proposed main irrigation pipe  
(approx. location—system not designed)



Potential irrigation area

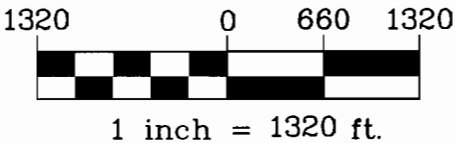
--- Unnamed intermittent stream

**RECEIVED**

**MAR 03 2008**

**WATER RESOURCES DEPT  
SALEM, OREGON**

Note: The proposed wirery is NW of the well, but not constructed yet.



MAP BASE:  
ASSESSOR MAPS 9S 5 36,  
& 9S 5 25

Project: 307-2-135  
Drawing: 30721350A-Mulkey Res.WR.dwg  
By: CVB/WPK  
Checked by: EAU  
Date: 2-11-08

App No G-17017

13

See Map 9.5.

INT. CORNER  
DLC NO. 63

E'LY S  
DAVID  
DLC N

400  
115.70 AC  
N.W. CORNER  
SMITH COLLINS  
DLC NO. 64

501  
83.81 AC.

314.60

2470.00

518.00

518.00  
508.50

26 25

35 36

10/20/06

RECEIVED

MAR 03 2008

WATER RESOURCES DEPT  
SALEM, OREGON

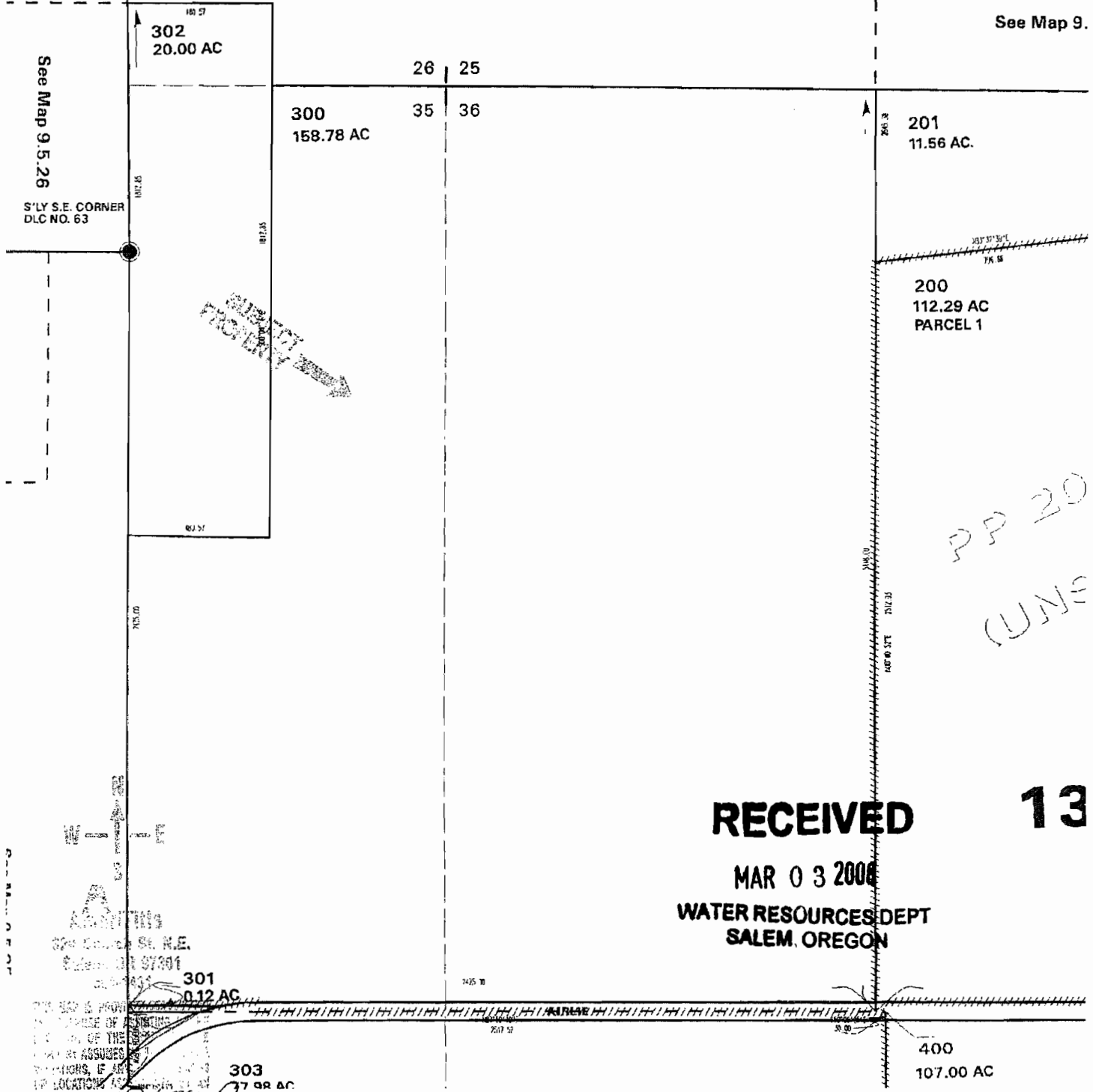
NOT TO BE USED FOR  
PURPOSE OF ASSIGNING  
THE  
OF THE PROPERTY  
ASSIGNED NO LIABILITY FOR  
MAYING, IF  
OR LOGICAL  
ACTUAL SURVEY  
ORDER NO. 026352P  
095W25

**IMPORTANT**  
This Map for Assessment  
and Taxation Purposes  
**ONLY**

**SEC.36 T9S**  
**POLK CO**

Scale 1" =

See Map 9.



See Map 9.5.26

S'LY S.E. CORNER  
DLC NO. 63

*SEE MAP 9.5.26*

*PP 20*  
*(UNE)*

**RECEIVED**

**13**

MAR 03 2006

WATER RESOURCES DEPT  
SALEM, OREGON

ADDITIONAL  
224 Council St. N.E.  
Salem, OR 97301

301  
0.12 AC

303  
17.98 AC

400  
107.00 AC

THIS MAP IS PROVIDED  
IN PURSUANCE OF A STATUTE  
OF THE STATE OF OREGON  
AND THE ASSUMES THAT  
THE LOCATIONS AND  
ACTUAL SURFACE  
ORDER NO.

*045310*