



Scale 1"=1320'

APPLICATION MAP FOR GROUND WATER RIGHTS
Spin & Marty LLC
Located in T 1 S., Range 30 E.
Sections 16 & 17 Taxlot 1100

Section 16	
NW/SW	12.4 Ac.
SW/SW	19.0 Ac.
Section 17	
NE/SE	26.9 Ac.
NW/SE	27.2 Ac.
SE/NE	2.3 Ac.
SW/NE	18.4 Ac.
SE/NW	37.0 Ac.
NE/SW	16.8 Ac.
	160.0 Ac.

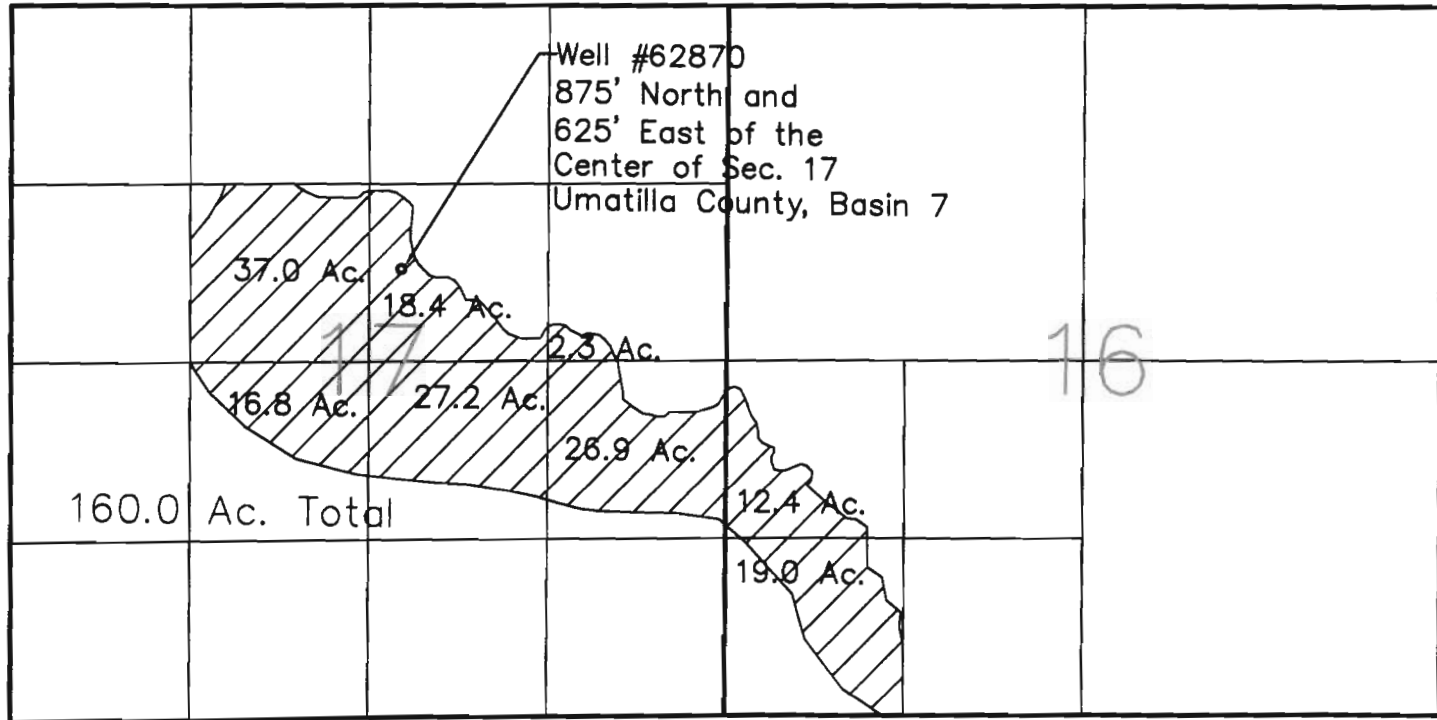
RECEIVED

JUN 20 2008

WATER RESOURCES DEPT
SALEM, OREGON

Application G-16092

Permit G-15724



APPLICATION MAP FOR GROUND
WATER RIGHTS

Spin & Marty LLC

Located in T 1 S., Range 30 E.
Sections 16 & 17 Taxlot 1100



Scale 1"=1320'

Section 16
NW/SW 12.4 Ac.
SW/SW 19.0 Ac.

Section 17
NE/SE 26.9 Ac.
NW/SE 27.2 Ac.
SE/NE 2.3 Ac.
SW/NE 18.4 Ac.
SE/NW 37.0 Ac.
NE/SW 16.8 Ac.
160.0 Ac.

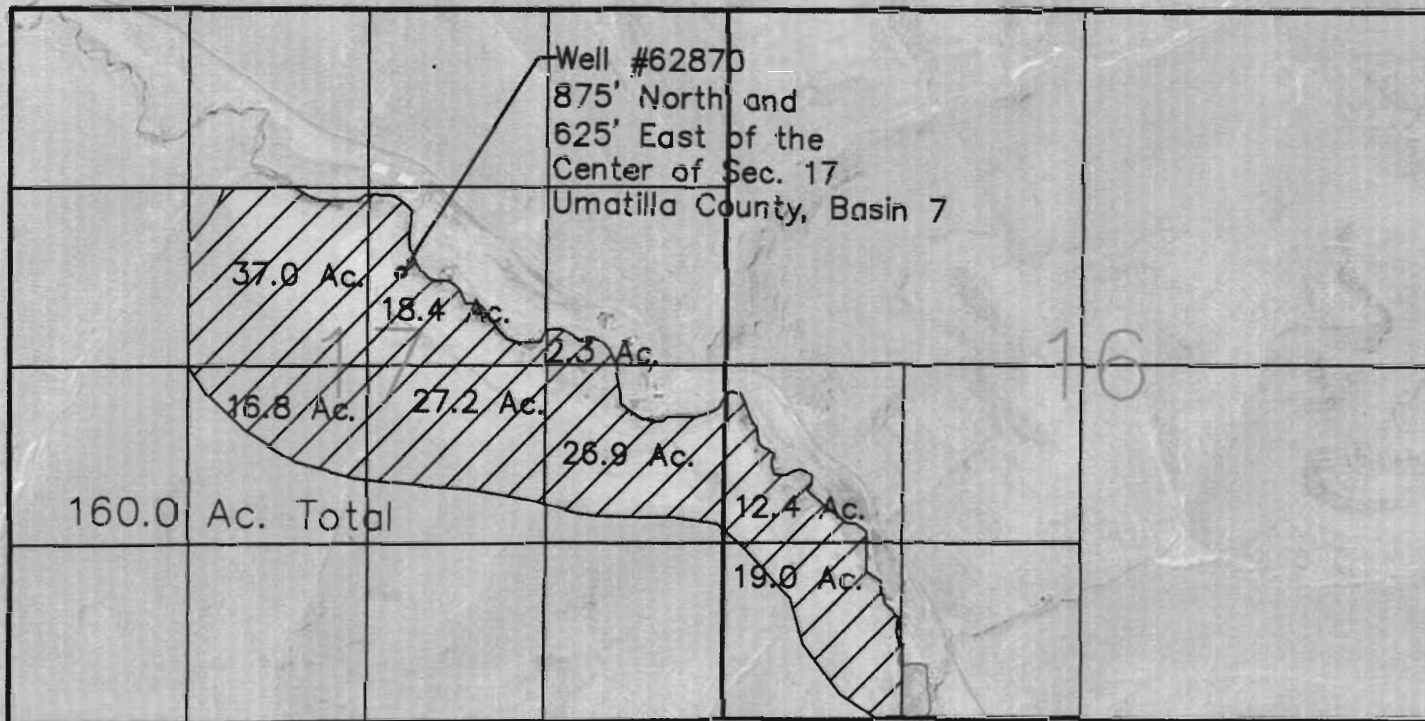
RECEIVED

JUN 20 2008

WATER RESOURCES DEPT
SALEM, OREGON

Application G-16092

Permit G-15724

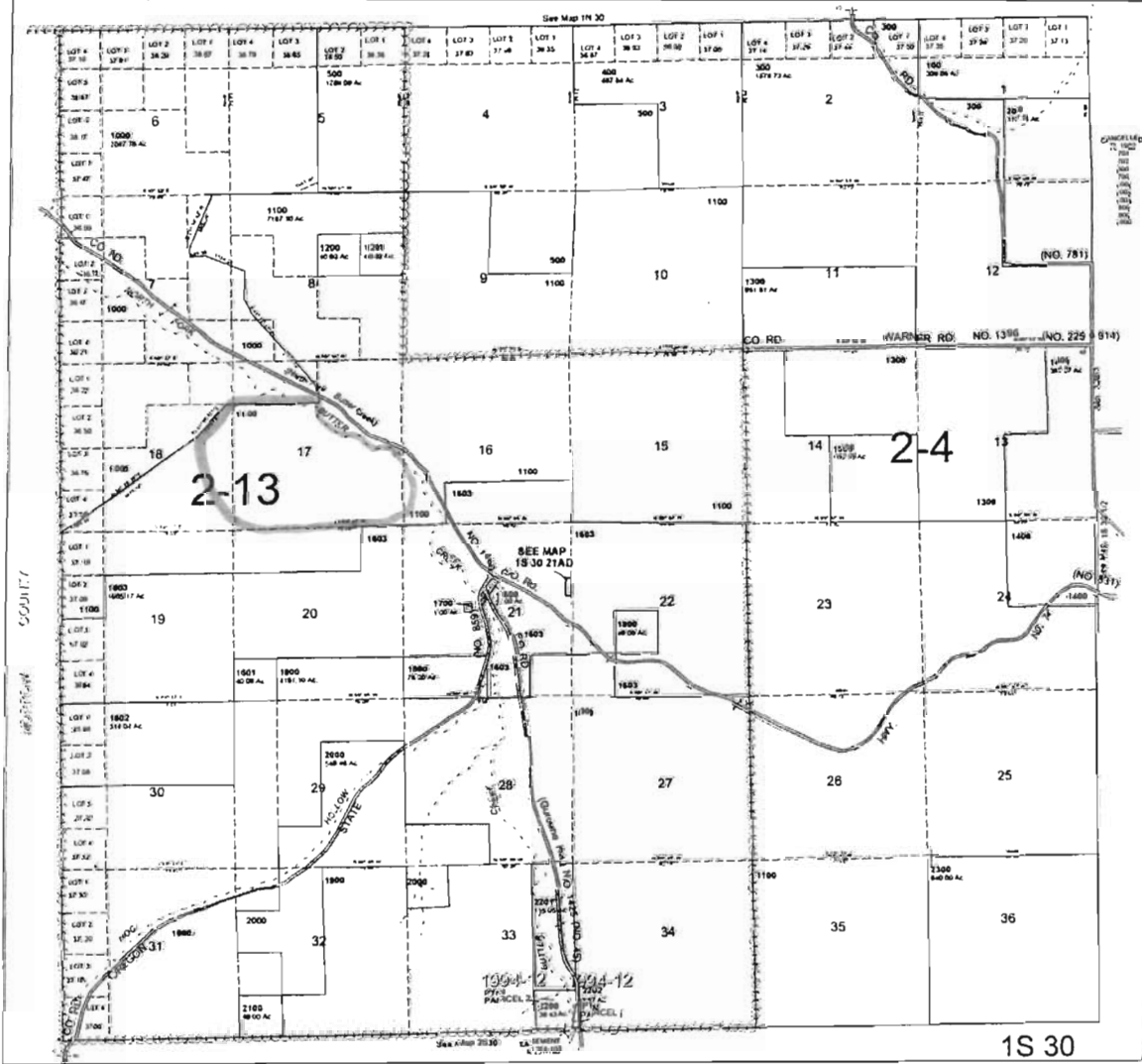


Spin & Marty LLC Tax Lot 1100

This map was prepared for Assessment & Taxation purposes only and has not been prepared for legal, engineering or surveying purposes.

T1S R30E WM UMATILLA COUNTY
SCALE 1"=2000'

1S 30



RECEIVED

JUN 20 2008

WATER RESOURCES DEPT
SALEM, OREGON