

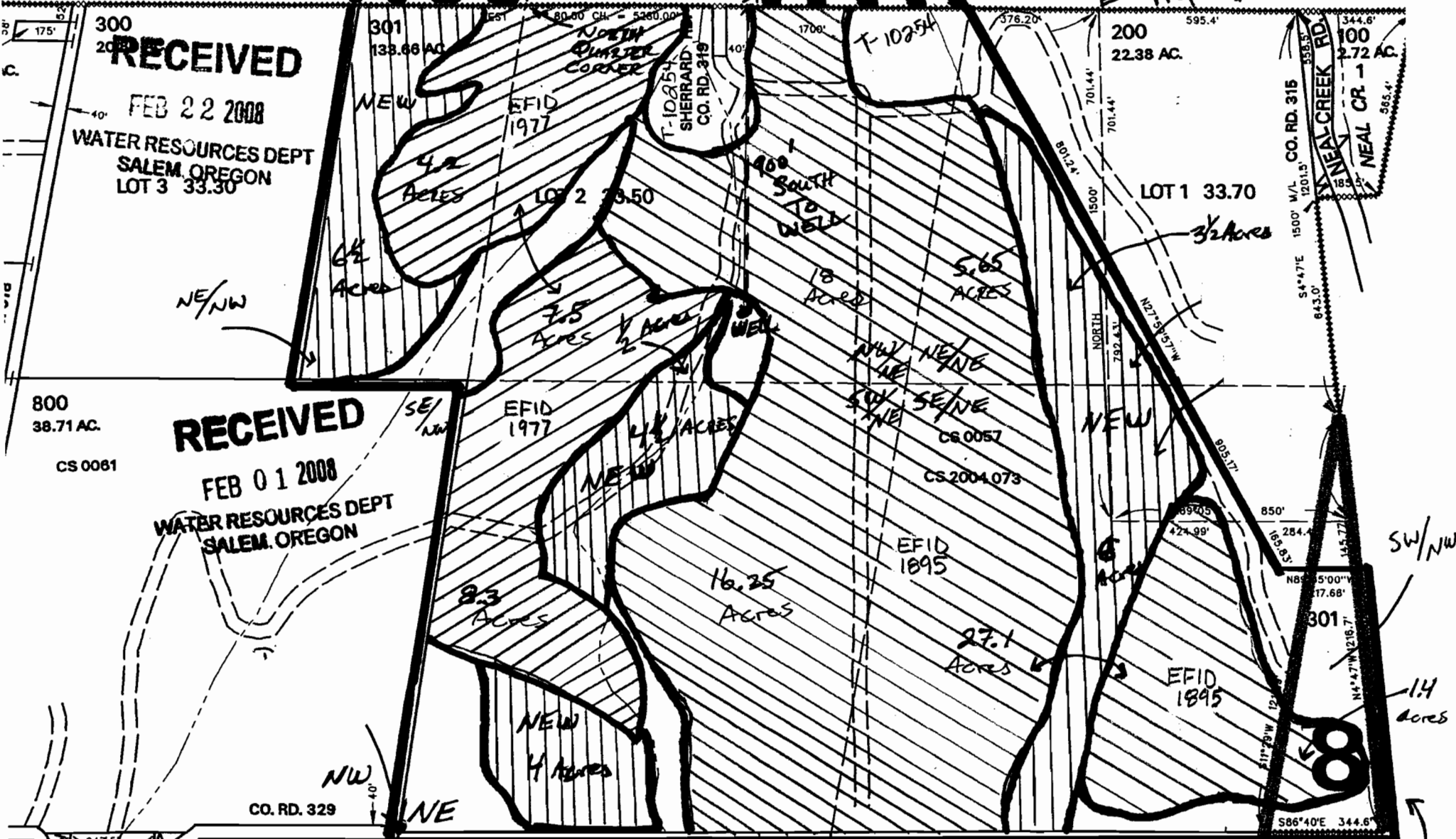
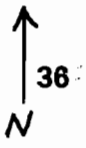
Dog River Orchards, Hood River County, Hood Basin

1N-10E-1-301

1" = 400'

Well Locations = 650' East and 900' South of North Quarter Corner
SEE MAP 02N 10E 36

Former Property Line



RECEIVED

FEB 22 2008

WATER RESOURCES DEPT
SALEM, OREGON
LOT 3 33.30

RECEIVED

FEB 01 2008

WATER RESOURCES DEPT
SALEM, OREGON

3

KEY

NEW	NEW PRIMARY	EAST FORK IRRIGATION
NEW	1895	1977

SUPPLEMENTARY

IN 11E 06
★
P 01N 11E 06

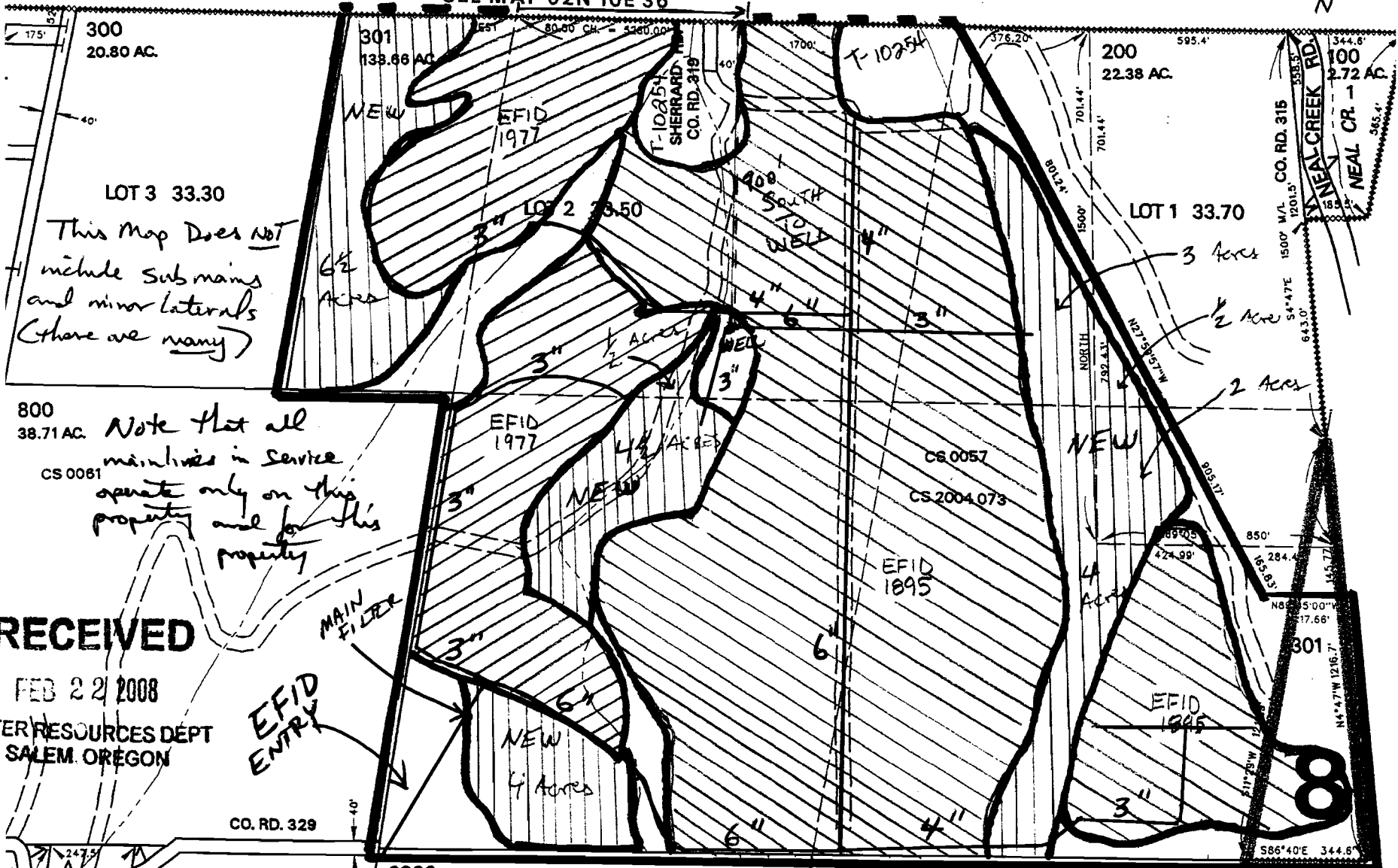
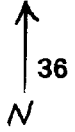
Dog River Orchards, Hood River County, Hood Basin

1N-10E-1-301

1"=400'

Well Location = 650' East of N. Center of Section
SEE MAP 02N 10E 36

MAIN LINE MAP



LOT 3 33.30
This Map Does NOT
include sub mains
and minor laterals
(there are many)

800 38.71 AC. Note that all
CS 0061 mainlines in service
operate only on this
property and for this
property

There are no open
3 ditches, canals, or
flumes on property

2100 103.50 AC. NEW PRIMARY EAST FORK IRRIGATION

KEY

NEW	1895	1977
-----	------	------

SUPPLEMENTARY

RECEIVED
FEB 22 2008
WATER RESOURCES DEPT
SALEM, OREGON

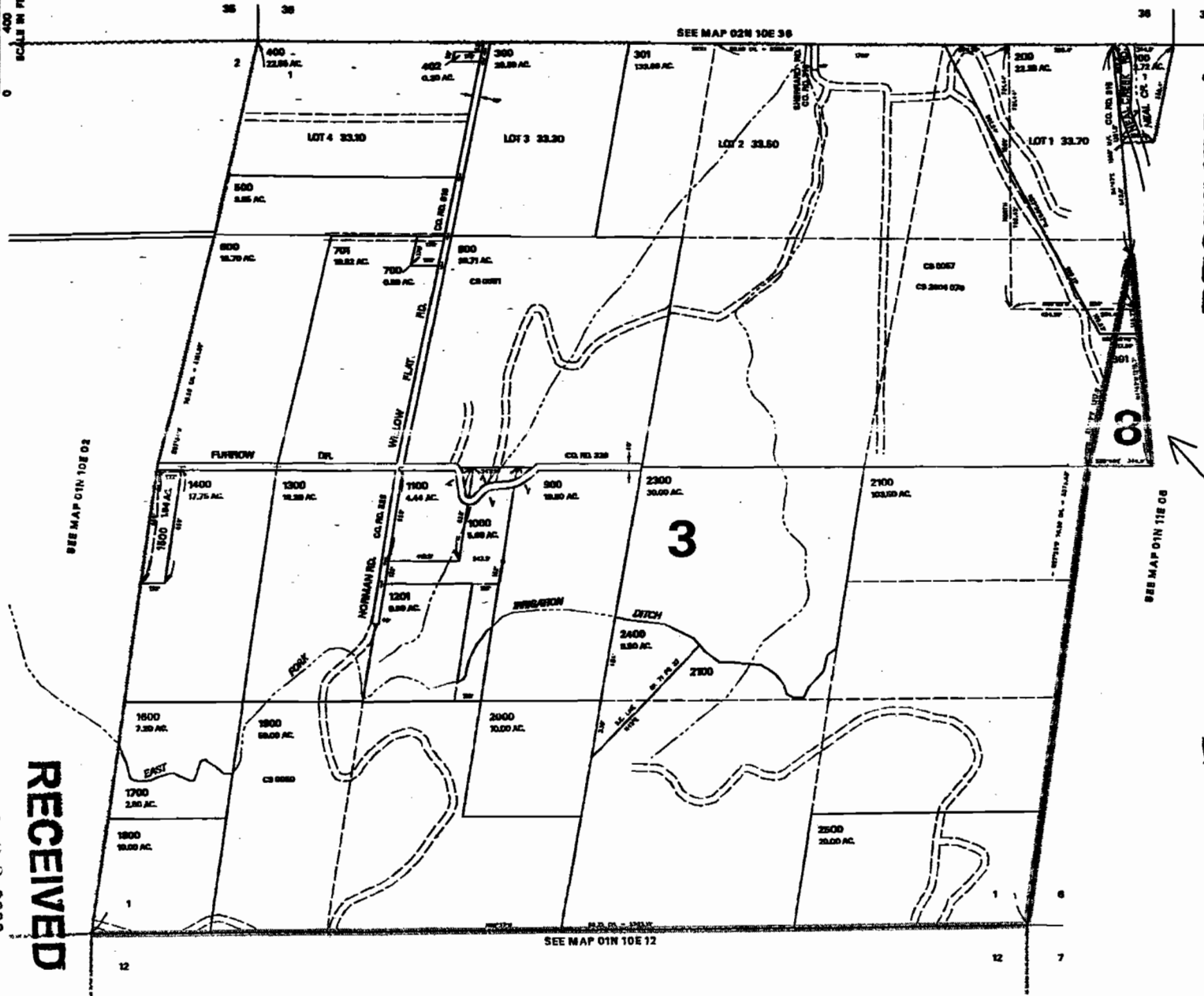
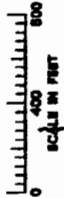
P 01N 11E 06

SECTION 01 T.01N. R.10E. W.M.
HOOPER COUNTY
T-4007

THIS MAP WAS PREPARED FOR
ASSESSMENT PURPOSE ONLY

01N 01

CANCELLED NO.
101
401
1300
2300
2801



RECEIVED
FEB 01 2008
WATER RESOURCES DEPT
SALEM, OREGON

*Shown on the
IN 10E 1
Assessor's Map.*

RECEIVED

FEB 22 2008

WATER RESOURCES DEPT
SALEM, OREGON

REVISED: CS
06/25/05

01N 10E 01

JUN 15 2005