

ARE FOR  
SES ONLY

300  
233.52 AC.

SEC.11 T.14S. R.04W. W.M.  
LINN COUNTY, OREGON

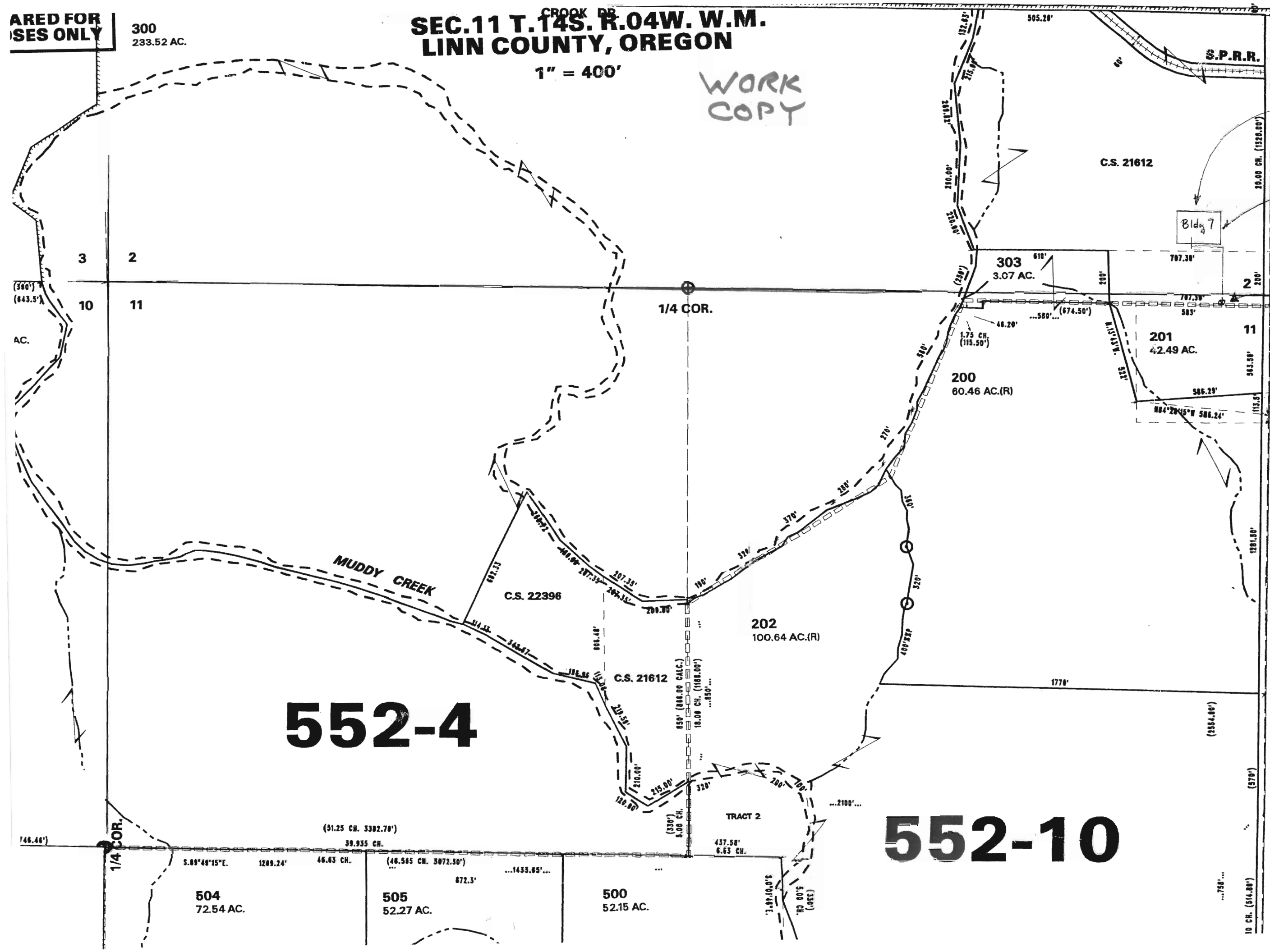
1" = 400'

WORK  
COPY

Bldg 7 = 4993' East & 250'  
North of the S.W. Corner  
of Section 2

Point of Use = piped prox  
327' North & 140' West of  
well to Bldg 7 for seed  
coating and boiler steam.

Well = 5133' East & 77'  
South of the N.W. Corner  
of Section 11



552-4

552-10

SEE MAP 14 4W 12

THIS MAP WAS PREPARED FOR ASSESSMENT PURPOSES ONLY

300  
233.52 AC.

SECTION 11 T14S 4W 11  
LINN COUNTY, OREGON

1" = 400'

RECEIVED  
JUN 26 2008  
WATER RESOURCES DEPT  
SALEM, OREGON



Bldg 7 = 4993' East & 250' North of the S.W. Corner of Section 2

Point of Use = piped prox 327' North & 140' West of well to Bldg 7 for seed coating and boiler steam.

Well = 5133' East & 77' South of the N.W. Corner of Section 11

SEE MAP 14 4W 10

SEE MAP 14 4W 12

Water Right Application Map to Appropriate Groundwater for Smith Seed Services June 2008  
T14S 4W 11 Lot 201 Linn County

