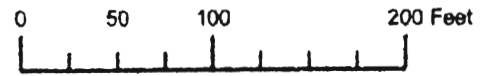


WORK COPY

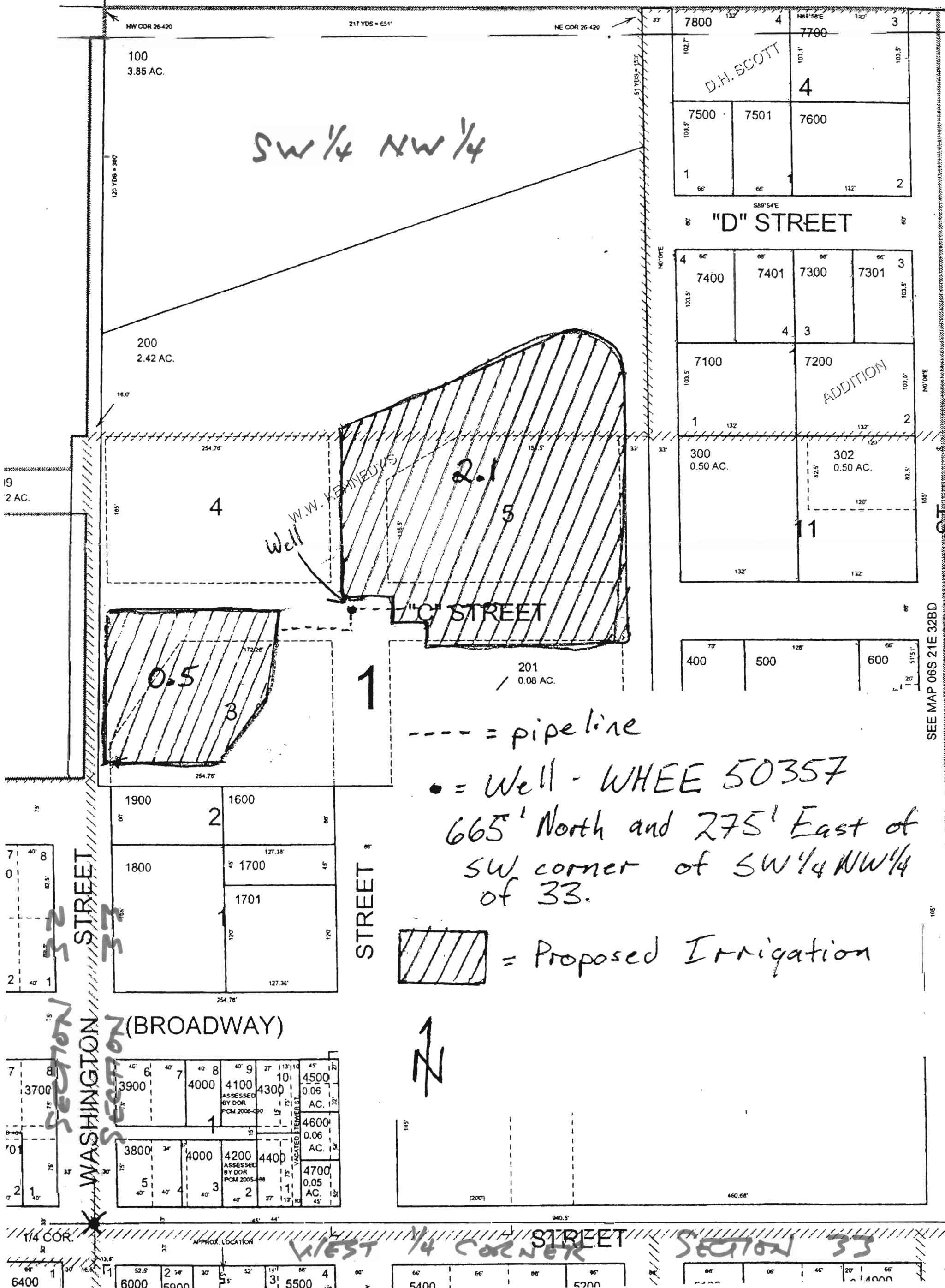
SW NW
N1/4 NW1/4 SECTION 33 T.06S. R.21E. W.M.
WHEELER COUNTY

1" = 100'

THIS MAP WAS PREPARED FOR ASSESSMENT PURPOSE ONLY



SEE MAP 06S 21E



SW 1/4 NW 1/4

D.H. SCOTT

4

ADDITION

Well W.W. KENNEDY'S

2.1

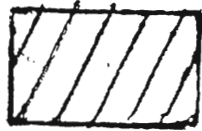
0.5

1

--- = pipeline

• = Well - WHEE 50357

665' North and 275' East of SW corner of SW 1/4 NW 1/4 of 33.



= Proposed Irrigation



WASHINGTON STREET
SECTION 32
SECTION 33

STREET

(BROADWAY)

WEST 1/4 CORNER STREET

SECTION 33

SEE MAP 06S 21E 32BD

BRITLEDGE

THIS MAP WAS PREPARED FOR
ASSESSMENT PURPOSE ONLY

0 50 100 200 Feet


SW1/4 NW1/4 SECTION 33 T.06S. R.21E. W.M.
WHEELER COUNTY

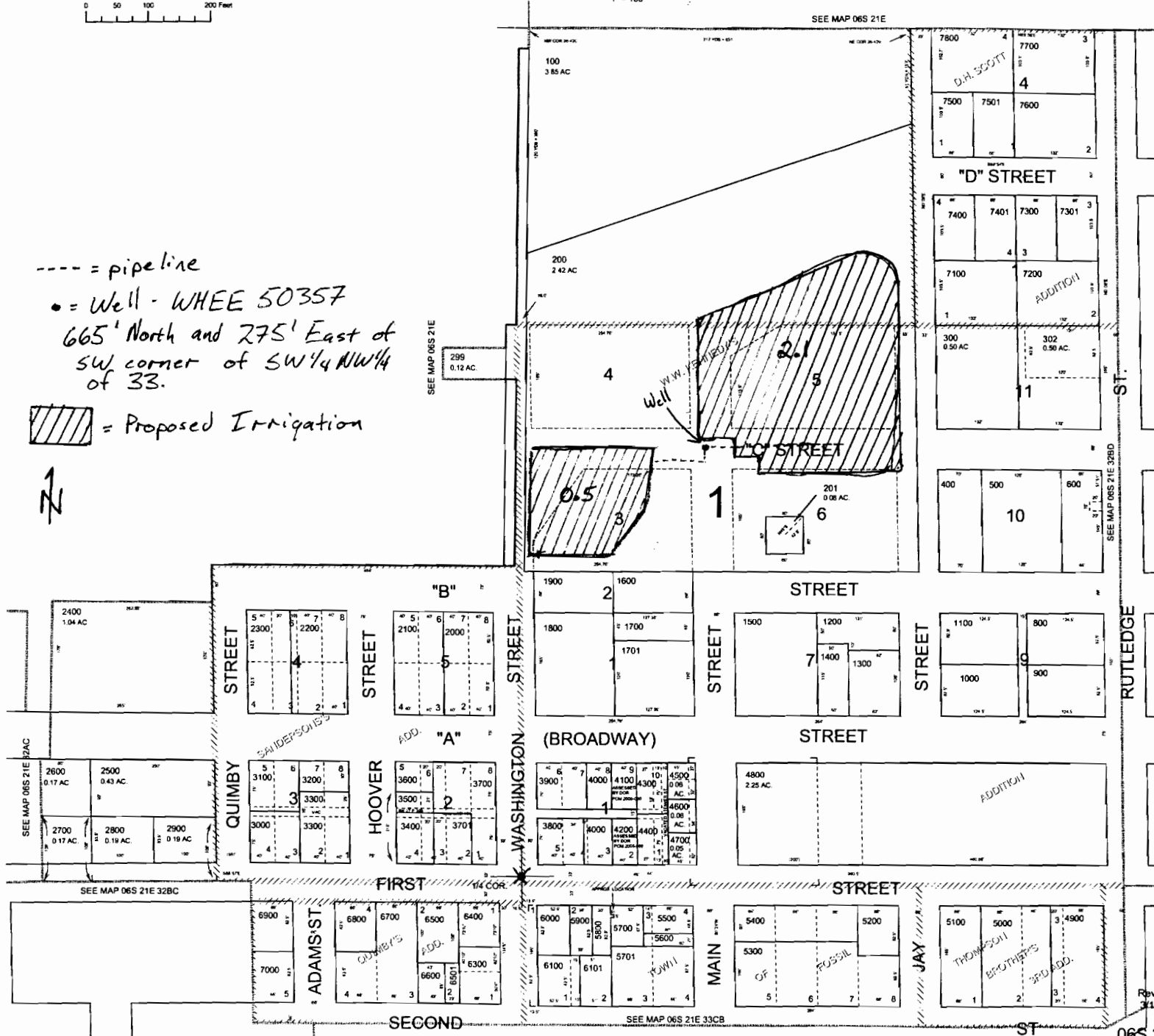
1" = 100'

06S 21E 33BC

CANCELLED NO.
301
700
1102
5001
5701
6200
6401

---- = pipeline
• = Well - WHEE 50357
665' North and 275' East of
SW corner of SW1/4 NW1/4
of 33.

 = Proposed Irrigation



RECEIVED
 JUN 23 2008
 WATER RESOURCES DEPT
 SALEM, OREGON

Revised 9C
3/13/2006

06S 21E 33BC