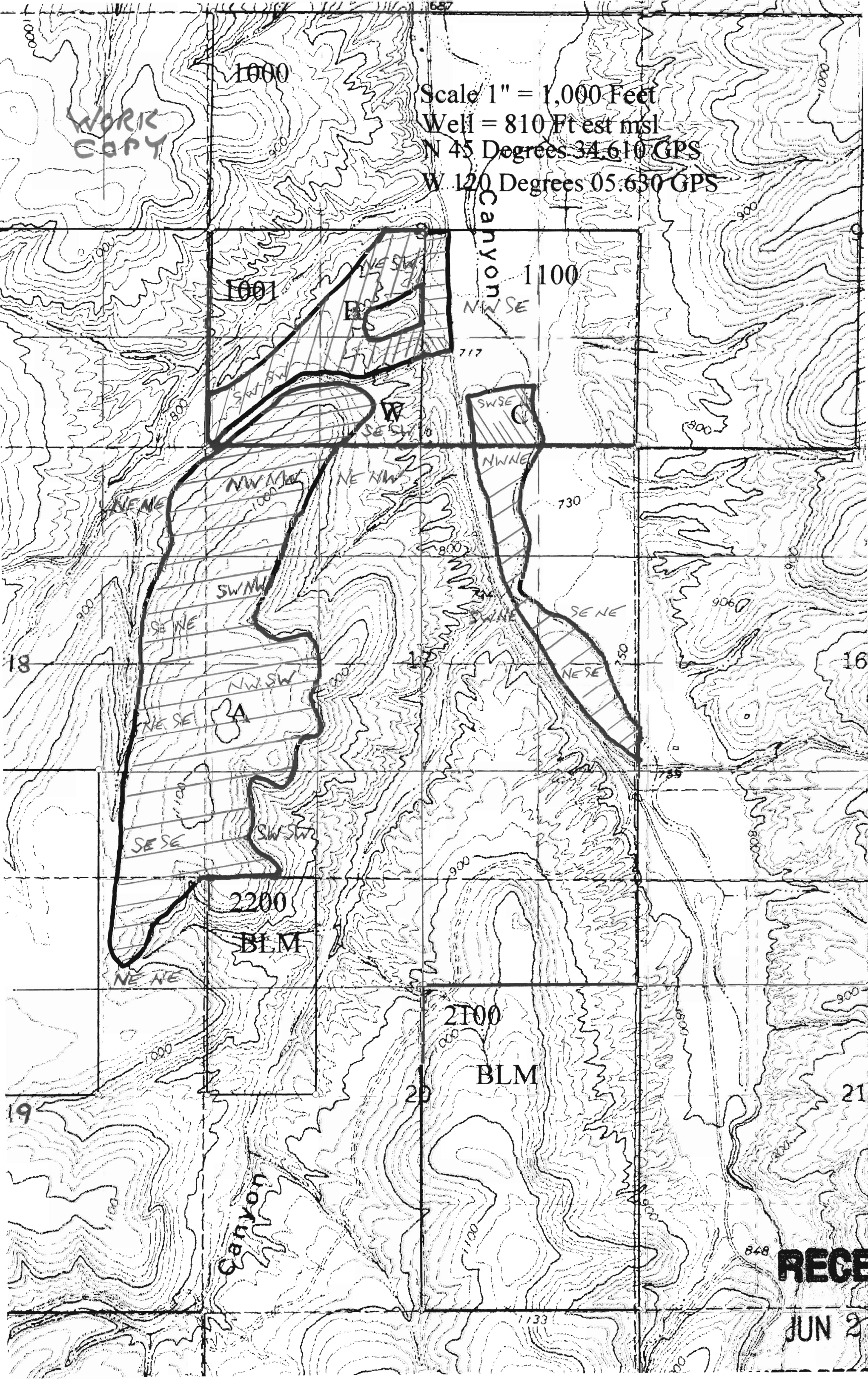


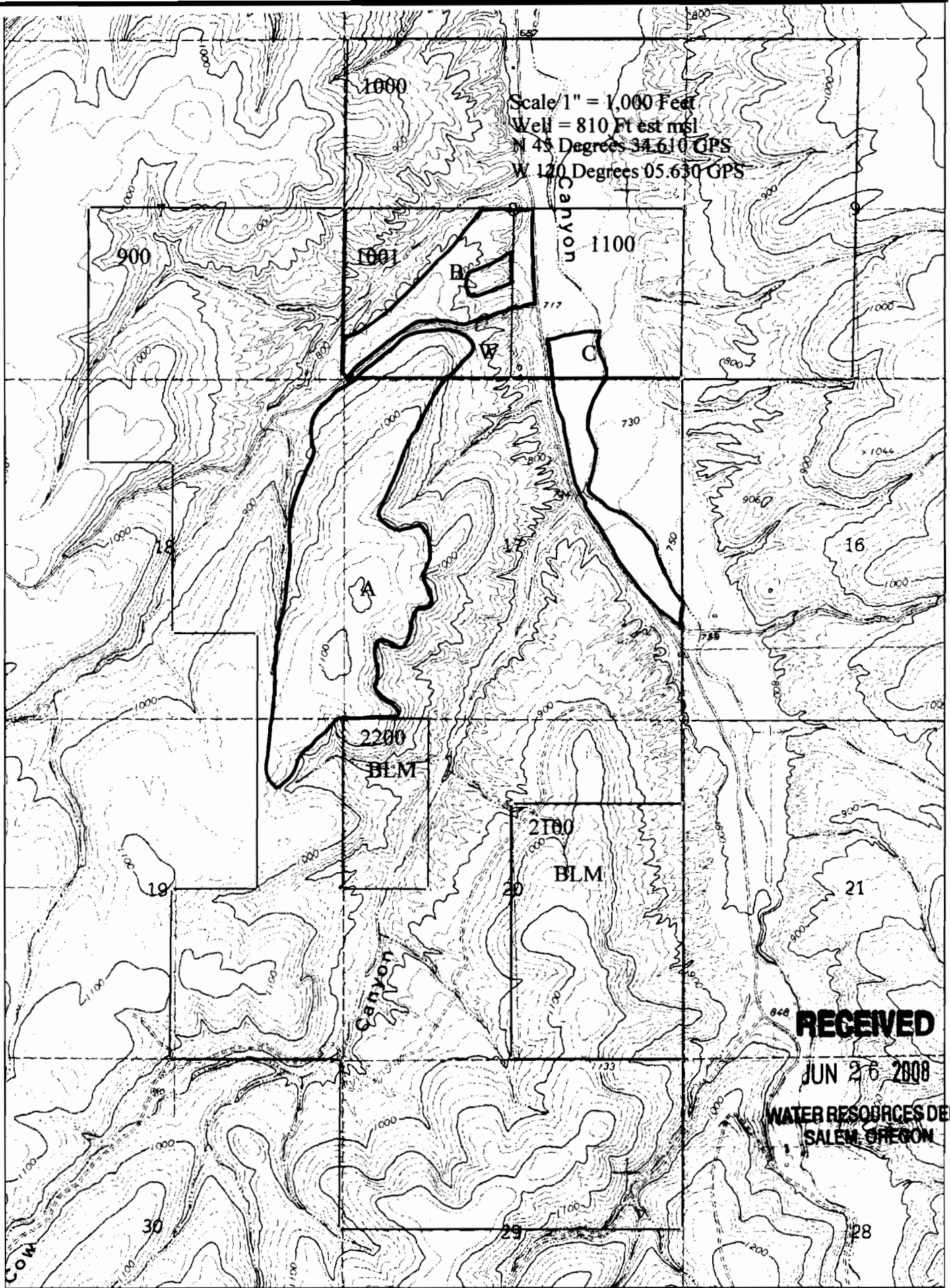
Scale 1" = 1,000 Feet
Well = 810 Ft est msl
N 45 Degrees 34.610 GPS
W 120 Degrees 05.630 GPS

WORK
COPY



RECE

JUN 2

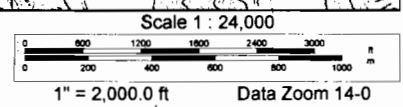
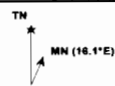


Scale 1" = 1,000 Feet
 Well = 810 Ft est msl
 N 45 Degrees 34.610 GPS
 W 120 Degrees 05.630 GPS

RECEIVED

JUN 26 2008

WATER RESOURCES DEPT
 SALEM OREGON

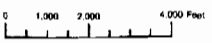


RECEIVED

AUG 15 2007

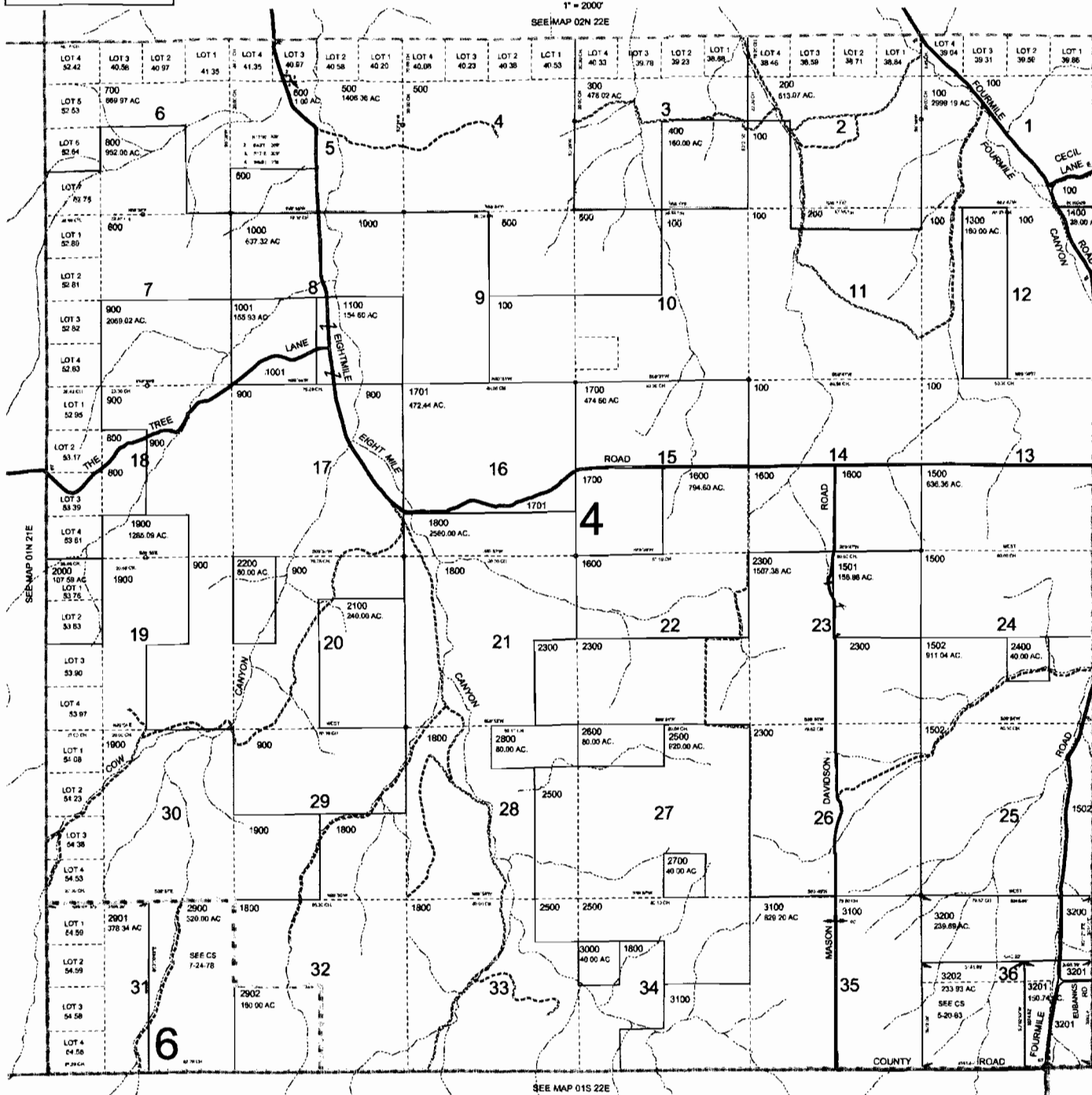
WATER RESOURCES DEPT
SALEM OREGON

THIS MAP WAS PREPARED FOR
ASSESSMENT PURPOSE ONLY



T.01N. R.22E. W.M.
GILLIAM COUNTY
1" = 2000'

SEE MAP 02N 22E



SEE MAP 01S 22E

01N 22E
CANCELLED NO
3300

RECEIVED

JUN 26 2008

WATER RESOURCES DEPT
SALEM OREGON

COUNTY

MORROW

Revised 9C
6/5/2007
01N 22E