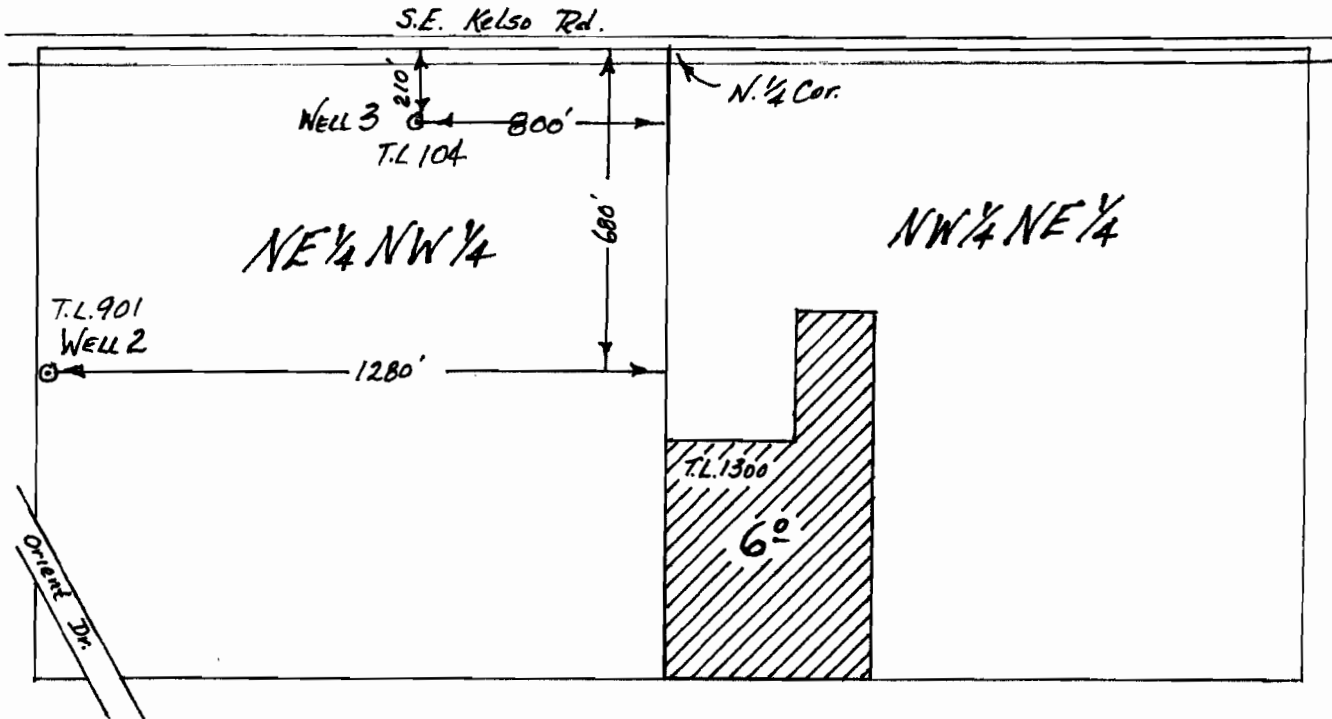


T. 2 S., R. 4 E., W. M.

SECTION 10



N

1" = 400'

MAP TO ACCOMPANY
APPLICATION FOR
PATTERSON NURSERY SALES

RECEIVED

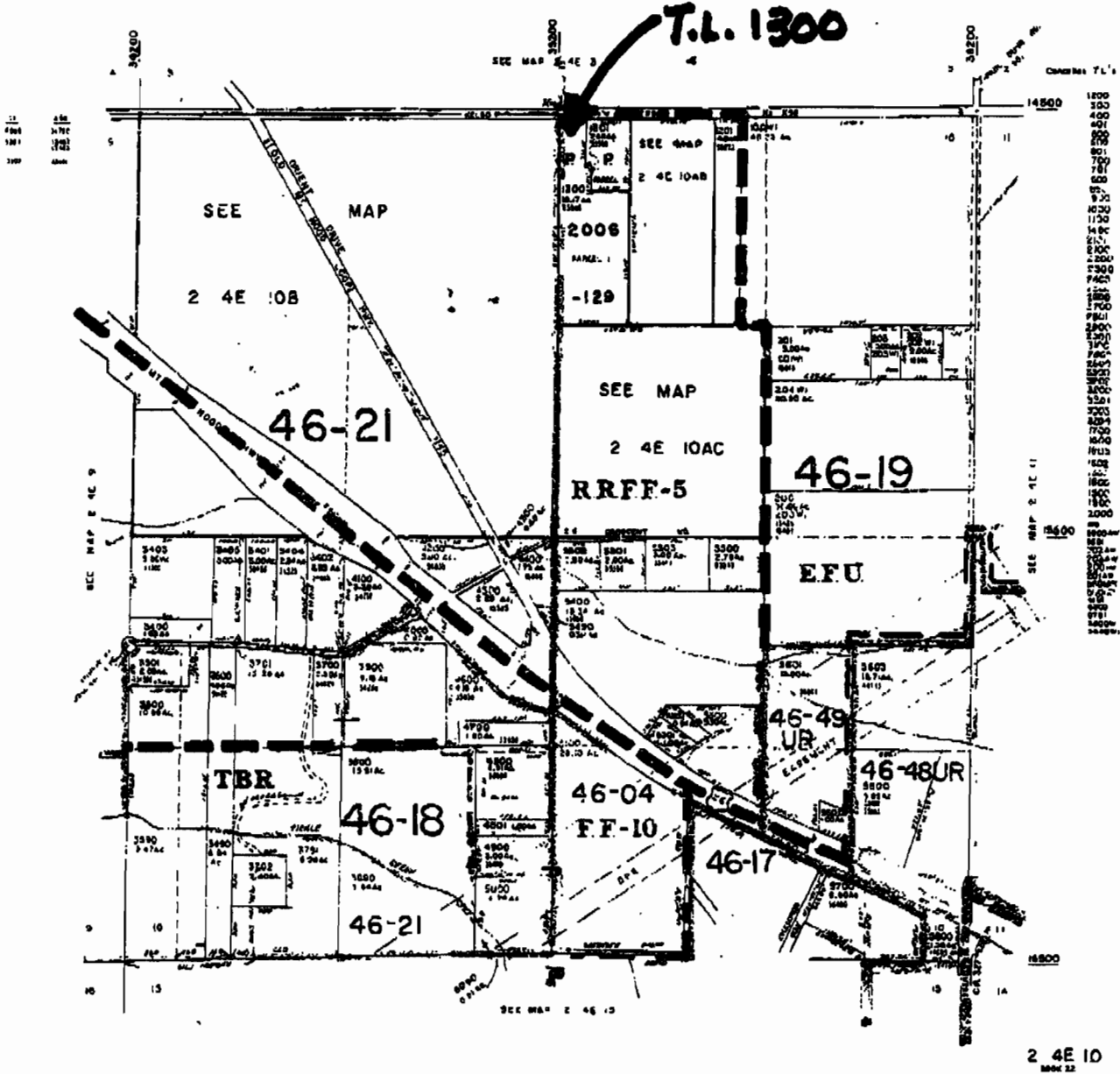
NOV 19 2007

WATER RESOURCES DEPT
SALEM, OREGON

This map was prepared for assessment purposes only.

SECTION 10 T2S R.4E W.M.
CLACKAMAS COUNTY
T. 400'

2 4E 10



RECEIVED

NOV 19 2007

WATER RESOURCES DEPT
SALEM, OREGON

2-3

This map was prepared for assessment purposes only.

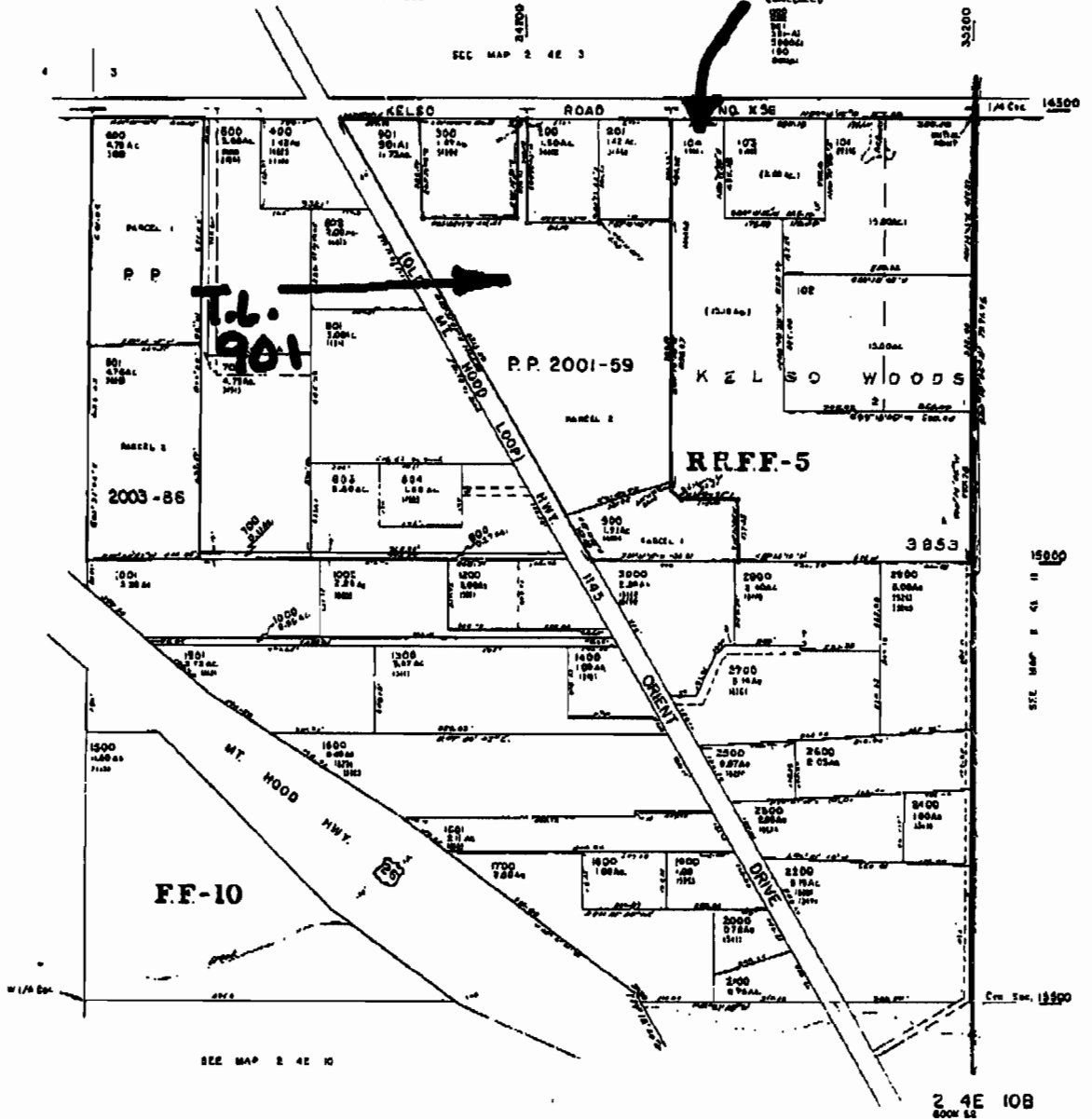
NW1/4 SECTION 10 T2S. R.4E. W.M.
CLACKAMAS COUNTY
1" = 200'

2 4E 10B

T.L. 104

SEE MAP 2 4E 3

46-21



RECEIVED

NOV 19 2007

WATER RESOURCES DEPT
SALEM, OREGON

Da 2-3