

Assessment & Taxation purposes
or is suitable for legal
uses.

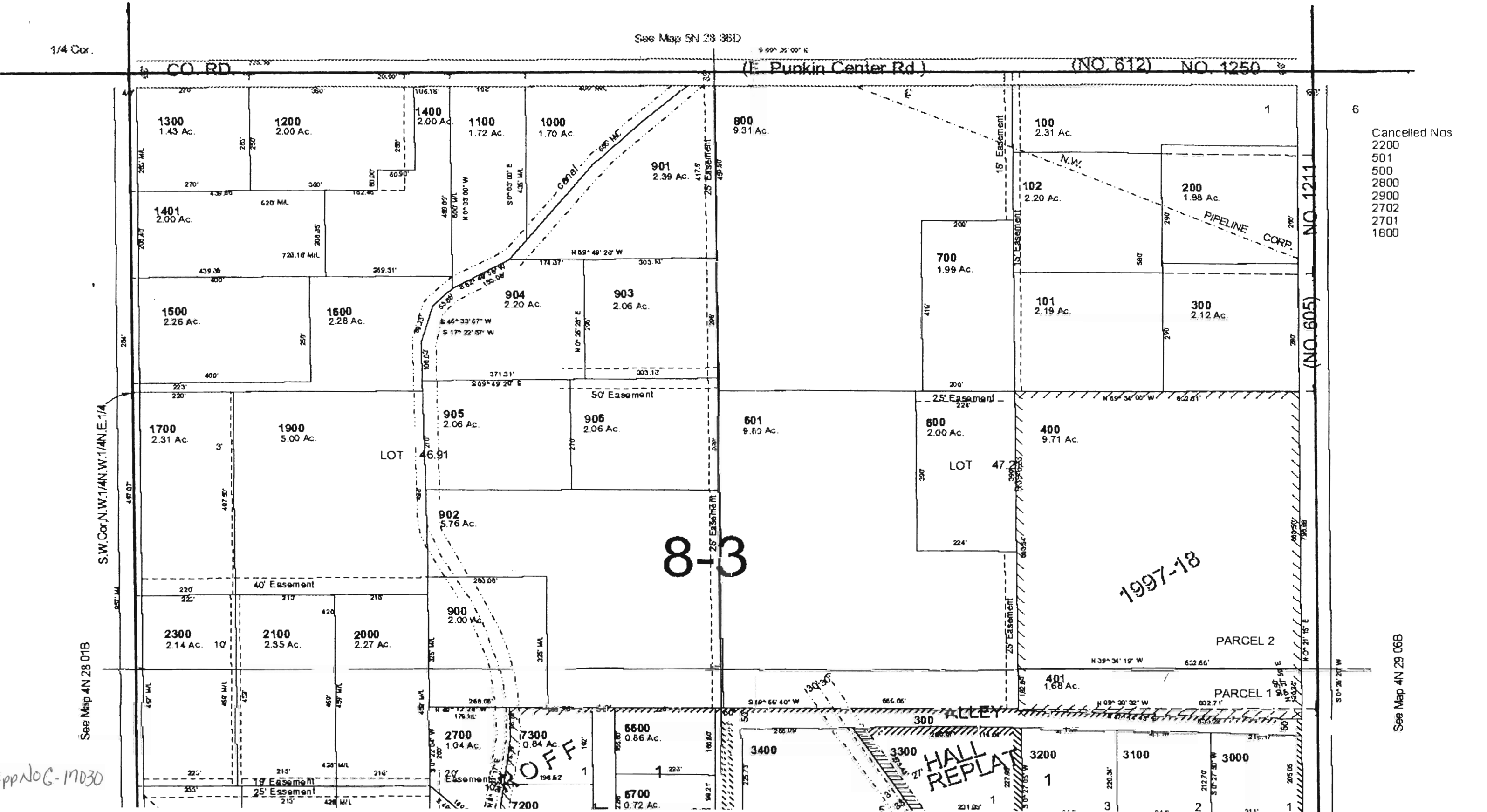
NE 1/4 SEC 1 T 4N R 28E WM UMATILLA COUNTY, OR

11/30/06

4N 28 01A

SCALE: 1" = 200'

AERIAL PHOTO NO. NZ-1P-124



- Cancelled Nos
- 2200
 - 501
 - 500
 - 2800
 - 2900
 - 2702
 - 2701
 - 1800

See Map 4N 28 01B

See Map 4N 28 06B

App No C-17030

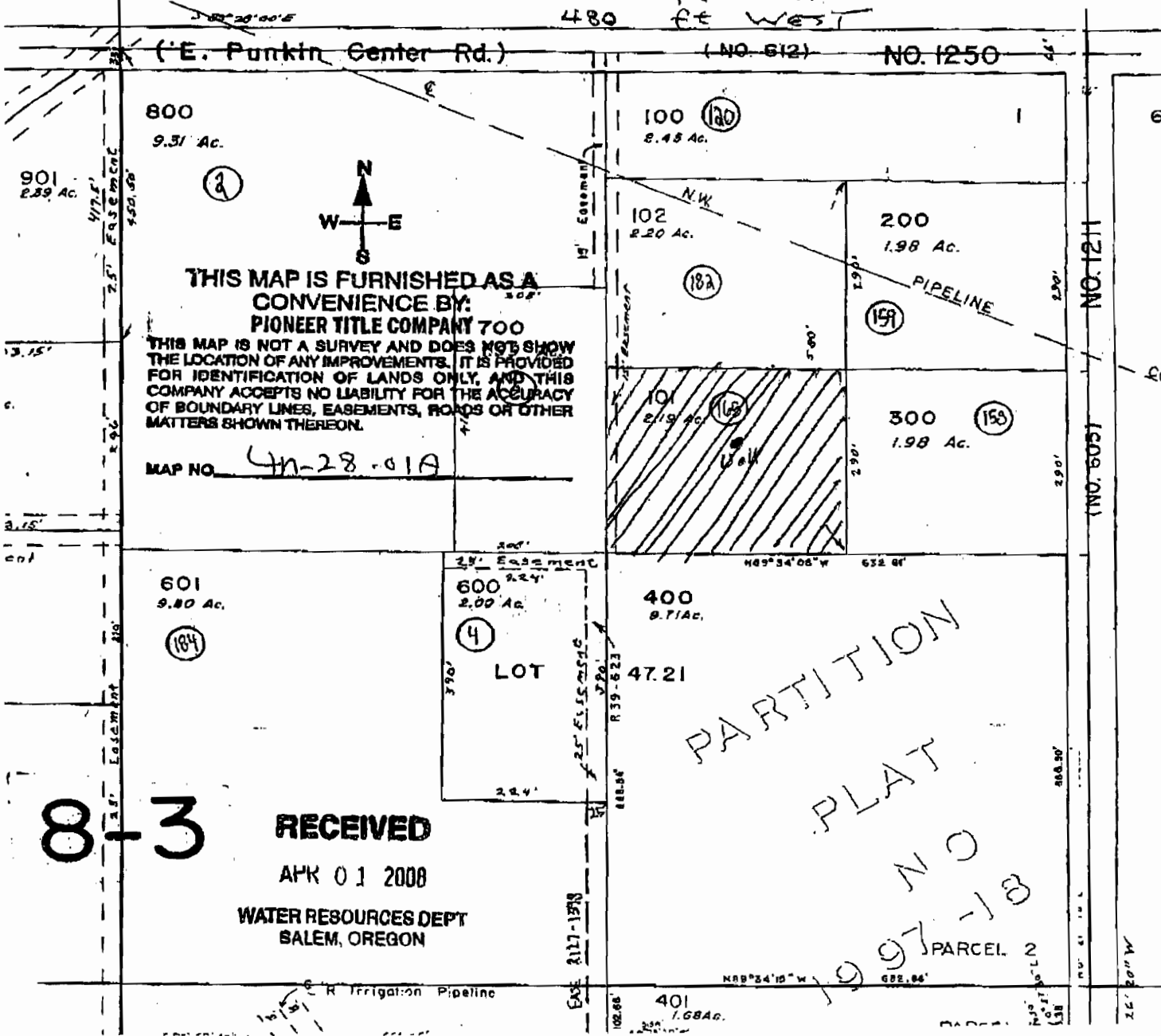
UMATILLA COUNTY

1"=200'

see Map 5N28360

WELL LOCATED FROM NE CORNER SECTION 1
545 ft SOUTH
480 ft WEST

CHAS ROFF
HALIS
PP 19



8-3

RECEIVED

APR 01 2008

WATER RESOURCES DEPT
SALEM, OREGON

PARTITION PLAT

NE 1/4 NE 1/4 SEC 1 T 4N R 28E W/M UMATILLA COUNTY, OR

SCALE: 1"=200'

Virginia Bladp
4-2-08