

SCALE
 1" = 200'
 600 Schroeder Lane
 Grants Pass, OR
 4100

KATHLEEN SNELL
 8 VANDERLIP DR
 RANCHO PALOS VERDES,
 CA 90275
 310-707-8876

• pump placement
 2' East of western
 property line +
 25' South FROM RIPARIAN LINE
 AT HIGH RIVER MARK
 | electric line
 | water line

SEE MAP 36 6 14.4

ASSESSORS MAP
 36-06-14-CO T1 4100

JOSEPHINE COUNTY
 SW 1/4
 Sec 14
 T36S R6W

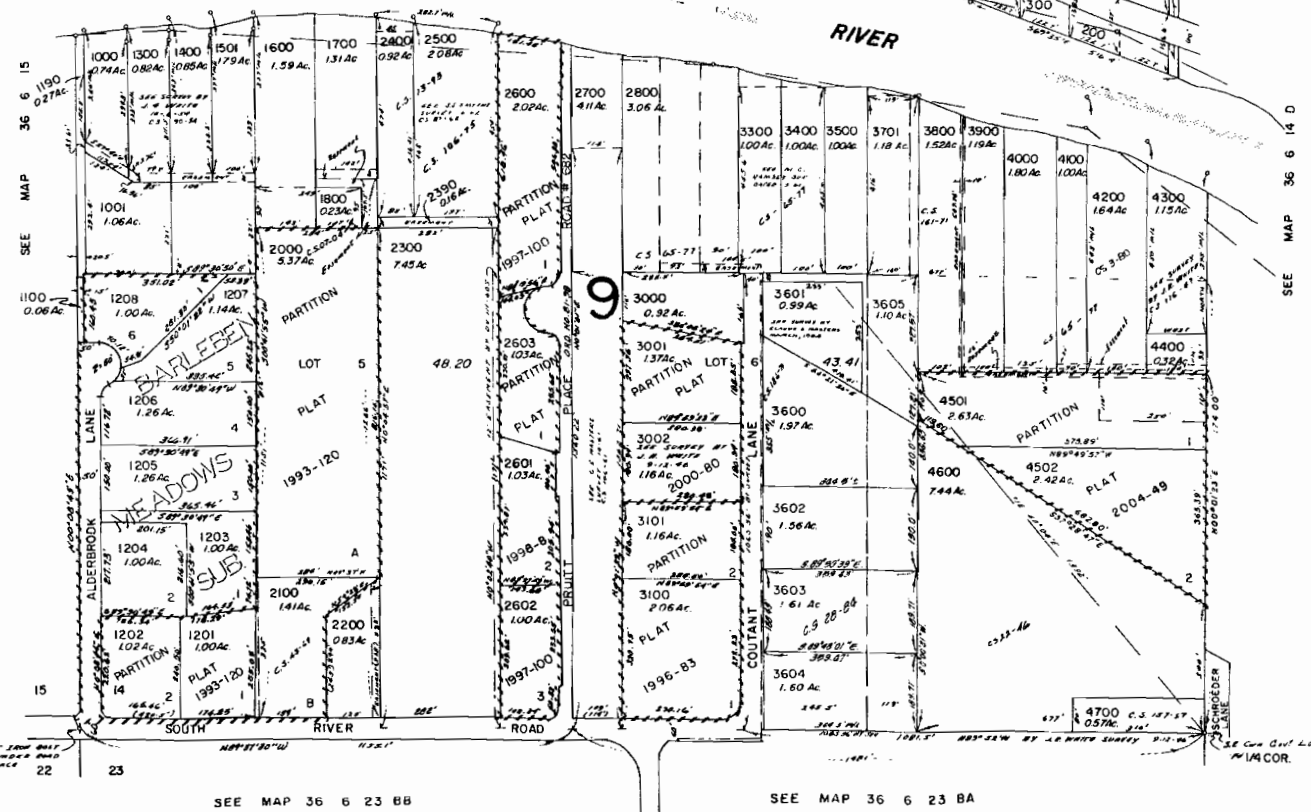
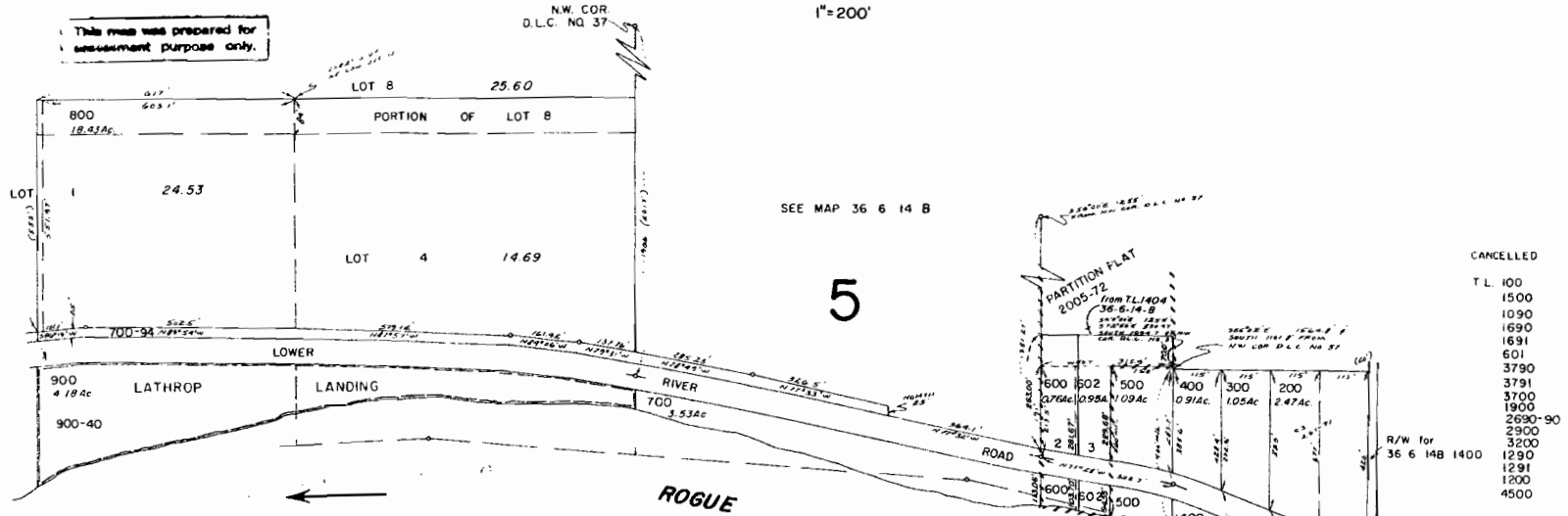
SE of SW
 N
 ↑

RECEIVED
 JUL 14 2008
 WATER RESOURCES DEPT
 SALEM, OREGON

1.0 acre, SE 1/4 SW 1/4, SECTION 14,
 T. 36 S., R. 6 W., W.M.
 Point of Diversion
 1390' north and 348' west of the
 southeast corner of
 Section 14, T. 36 S., R. 6 W., WM

South ~~corner~~ corner
 of T36S R6W Sec 14

This map was prepared for assessment purpose only.



RECEIVED
 JUL 14 2008
 WATER RESOURCES DEPT.
 SALEM, OREGON

SEE MAP 36 6 23 BB

SEE MAP 36 6 23 BA

Rogue River

Concrete platform
for
irrigation
pump =
21" w x 16" deep
4" THICK

Location
2' East of West
property line
6.25' North of
South-West
corner
← Electrical
line
← water line
Riparian
corridor
25' from
OHWL

STRUCTURE LOCATION
ZONE R MINIMUM SETBACKS
FRONT SIDE 2'
REAR 25' CENTERLINE
STREAM 25' from OHWL
PLANNER Valerie Montague
approved location

600 SCHROEDER LANE
GRANTS PASS, OR

70'

25'

RECEIVED

JUL 14 2008

WATER RESOURCES DEPT.
SALEM, OREGON

Legend

.....	Driveways
.....	Forest Roads
○	Taxlots
Water (line)	
—	Class 1
—	Class 2
Water (polygon)	
○	Water Bodies



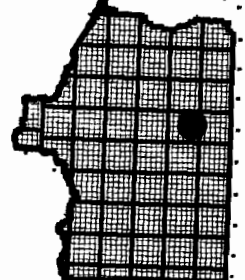
The information on this map is furnished for general interest purposes only. This information is provided without warranties of any kind, express or implied, and it should not be used to support any purchase or other investment. Neither Josephine County, Cave Junction, nor Grants Pass will accept responsibility for any errors or inaccuracies in the depicted information.

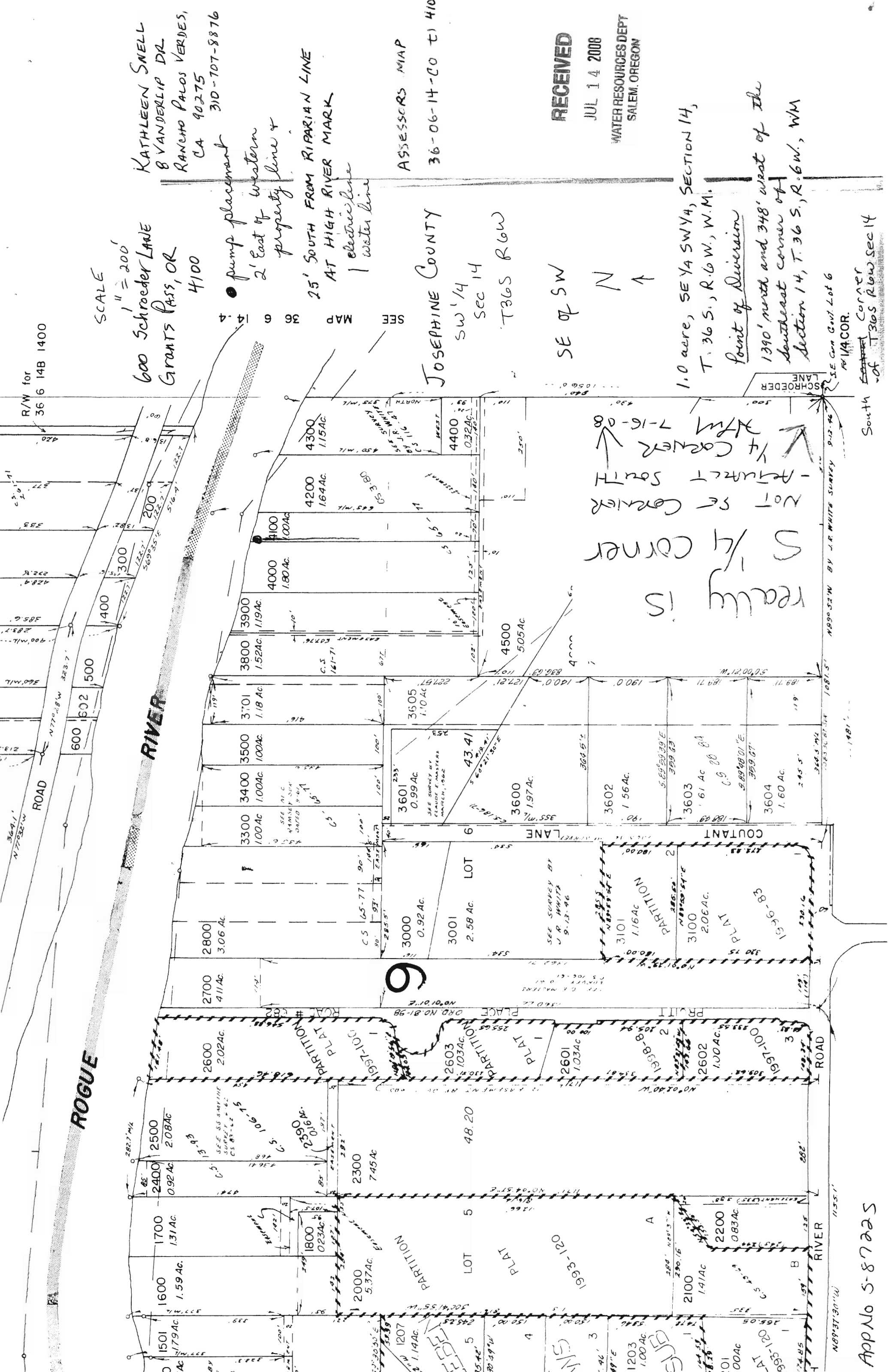


Scale
1:1200



Locator Map





SCALE
1" = 200'

600 Schroeder Lane
Grants Pass, OR
4100

KATHLEEN SNELL
8 VANDERLIP DR
RANCHO PALOS VERDES,
CA 90275
310-707-8876

● pump placement
2' East of western
property line &
25' SOUTH FROM RIPARIAN LINE
AT HIGH RIVER MARK
| electric line
| water line

ASSESSORS MAP
36-06-14-CO T1 410

RECEIVED
JUL 14 2008
WATER RESOURCES DEPT
SALEM, OREGON

JOSEPHINE COUNTY
SW 1/4
SEC 14
T36S R6W

1.0 acre, SE 1/4 SW 1/4, SECTION 14,
T. 36 S., R. 6 W., W.M.

Point of Diversion
1390' north and 348' west of the
southeast corner of
Section 14, T. 36 S., R. 6 W., WM

really is
S 1/4 corner
NOT SE corner
- adjust south
1/4 corner
7-16-08

South ~~corner~~ corner
of T36S R6W Sec 14

SE. Corn Govt Lot 6
R1/4 COR.

AppNo 5-87225