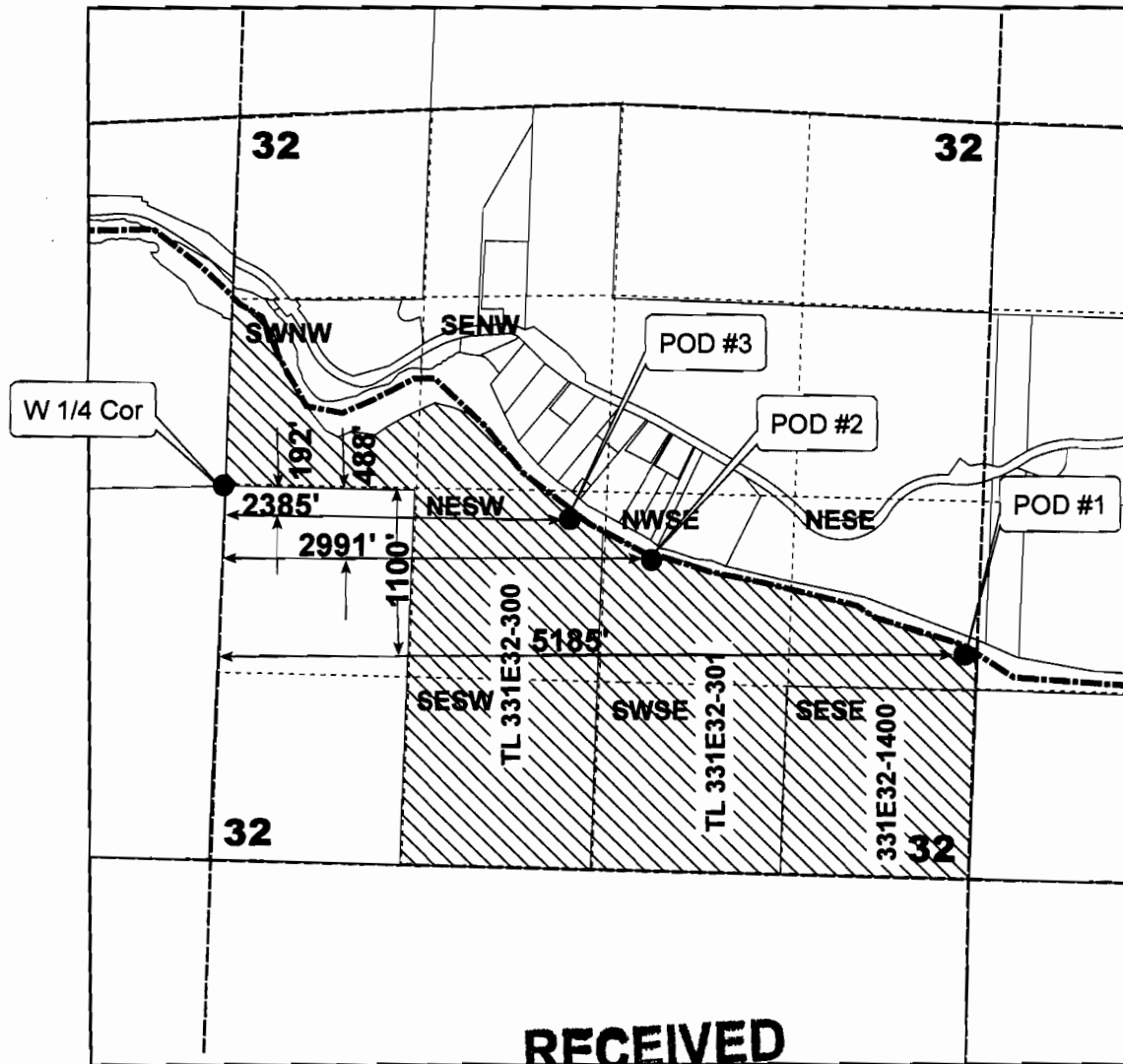


**Application Map
Quasi Municipal
Crowfoot Water Improvement District**

T 33 S, R 1 E, Sec 32, W.M.



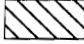


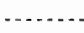
RECEIVED

MAR 26 2008
WATER RESOURCES DEPT
SALEM OREGON

RECEIVED

APR 24 2008
WATER RESOURCES DEPT
SALEM OREGON

Legend

-  Quasi Municipal coverage
-  Rogue River
-  Section Line
-  Quarter-quarter Line



1 inch equals 1,320 feet