

Township  
Range

2 South  
39 East

Section  
3

NE NW  
40 A

NW NE  
40 A

NE NE  
40 A

SE NW  
40 A

40 A  
SW NE

40 A  
SE NE

NW SW  
40 A

NW SE  
40 A

NE SE  
40 A

40 A  
SE SW

SW SE  
40 A

SE SE  
40 A

CASE ROAD

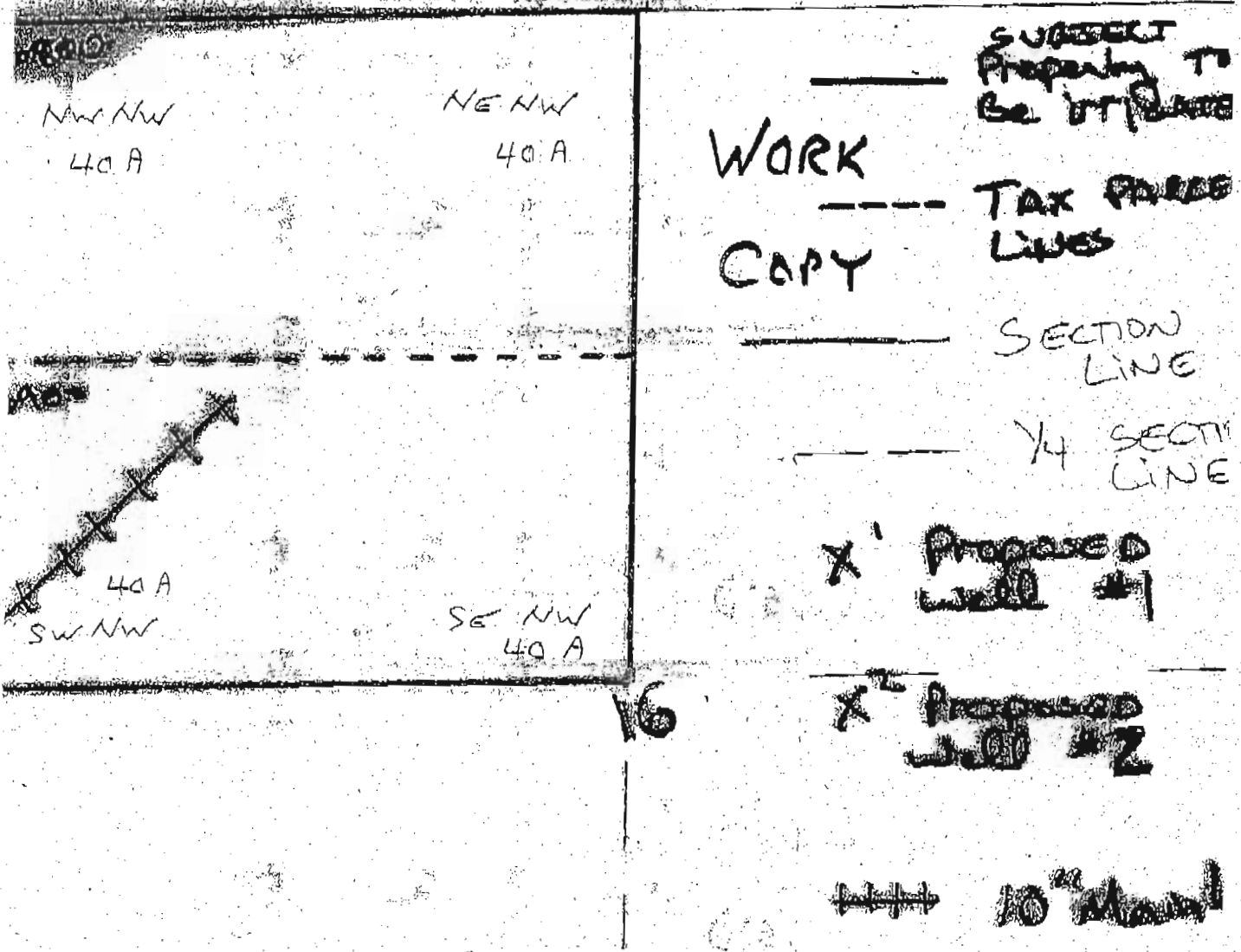
RECEIVED

JUL 16 2008

WATER RESOURCES DEPT  
SALEM, OREGON

OK  
7/16/08

Section  
9



Well #1 - Located 50 ft East thence 50 ft North from the North West Corner of the North East 1/4 of the South West 1/4 of Section 17, Township 2 South, Range 39 East.

Well #2 - Located 290 ft East thence 90 ft North from the South West Corner of the South East 1/4 of the South West 1/4 of Section 17, Township 2 South, Range 39 East.

Dr  
me  
7/16/08

Both well locations are subject to results of available water locating techniques, pending water permit approval. The well is estimated to require 15" metal casing through the first basalt layer, possibly 2000-5000 feet. Perforations and Seal depth to be determined by well material samples.

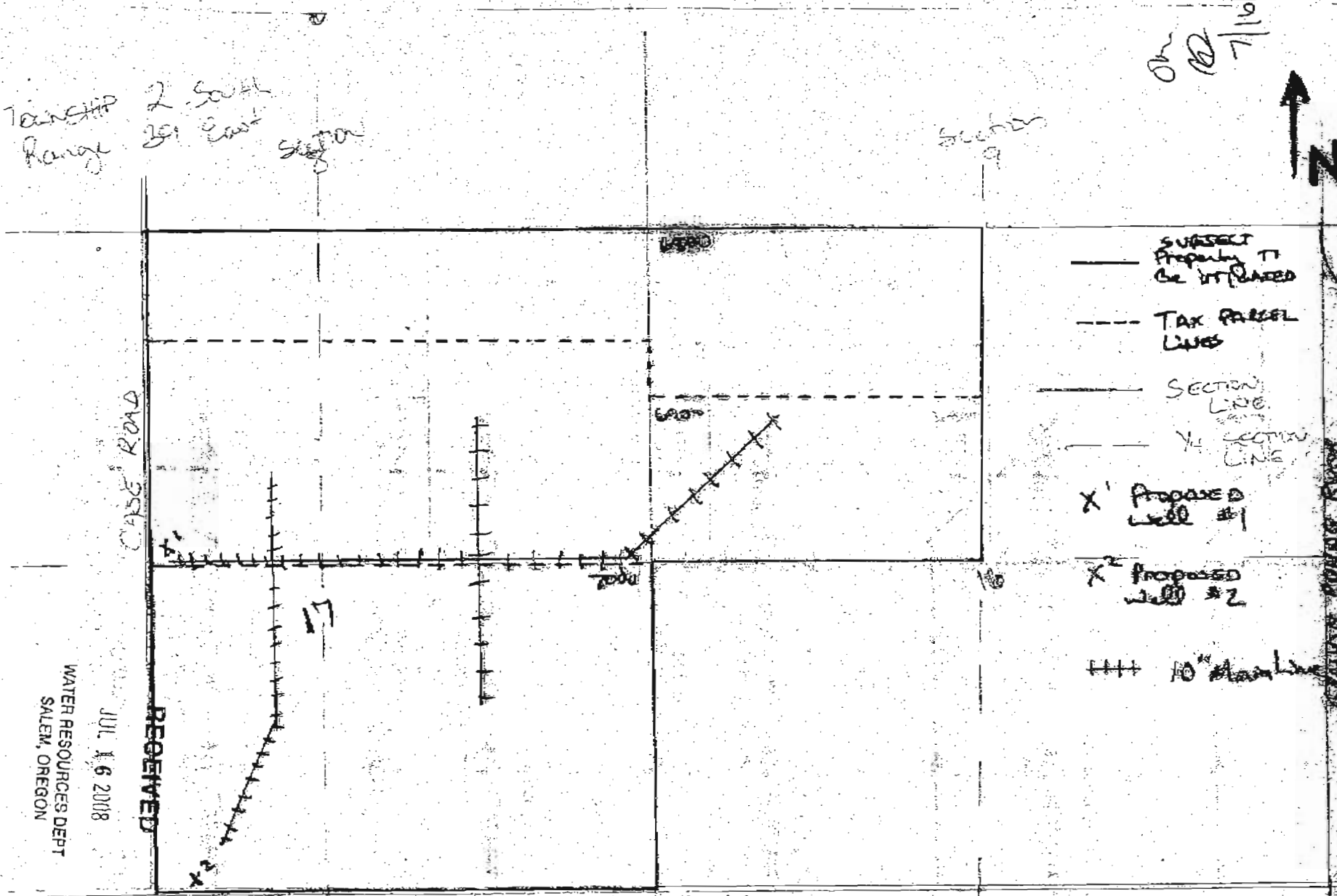
WATER RESOURCES DEPT  
SALEM, OREGON

JUL 16 2008

RECEIVED

CASE ROAD

MCURET LANE



Transfer Range 2 South 2E East Section

Section 9

On 7/16/08



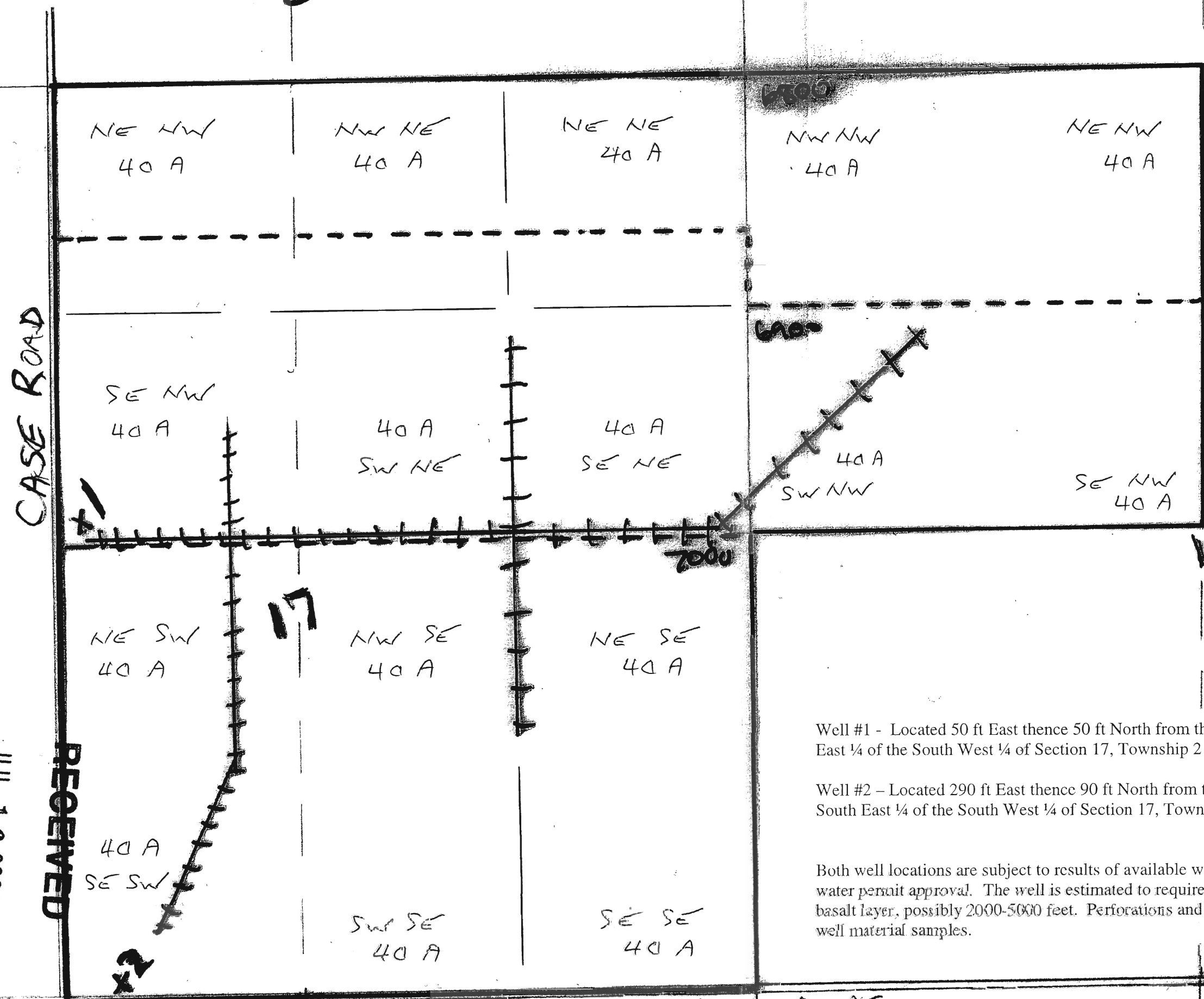
Scale - 1" = 1000ft

SALEM POWER PLANT

Township 2 South  
Range 39 East

Section 8

Section 9



WORK COPY

— SUBJECT Property To Be UTILIZED

--- TAX PACE LINES

— SECTION LINE

--- 1/4 SECTION LINE

X<sup>1</sup> Proposed Well #1

X<sup>2</sup> Proposed Well #2

||||| 10" Metal

Well #1 - Located 50 ft East thence 50 ft North from the North West Corner of the North East 1/4 of the South West 1/4 of Section 17, Township 2 South, Range 39 East.

Well #2 - Located 290 ft East thence 90 ft North from the South West Corner of the South East 1/4 of the South West 1/4 of Section 17, Township 2 South, Range 39 East.

Both well locations are subject to results of available water locating techniques, pending water permit approval. The well is estimated to require 15" metal casing through the first basalt layer, possibly 2000-5000 feet. Perforations and Seal depth to be determined by well material samples.

WATER RESOURCES DEPT  
SALEM, OREGON

JUL 16 2008

RECEIVED

Township 2 South  
Range 39 East

Section 8

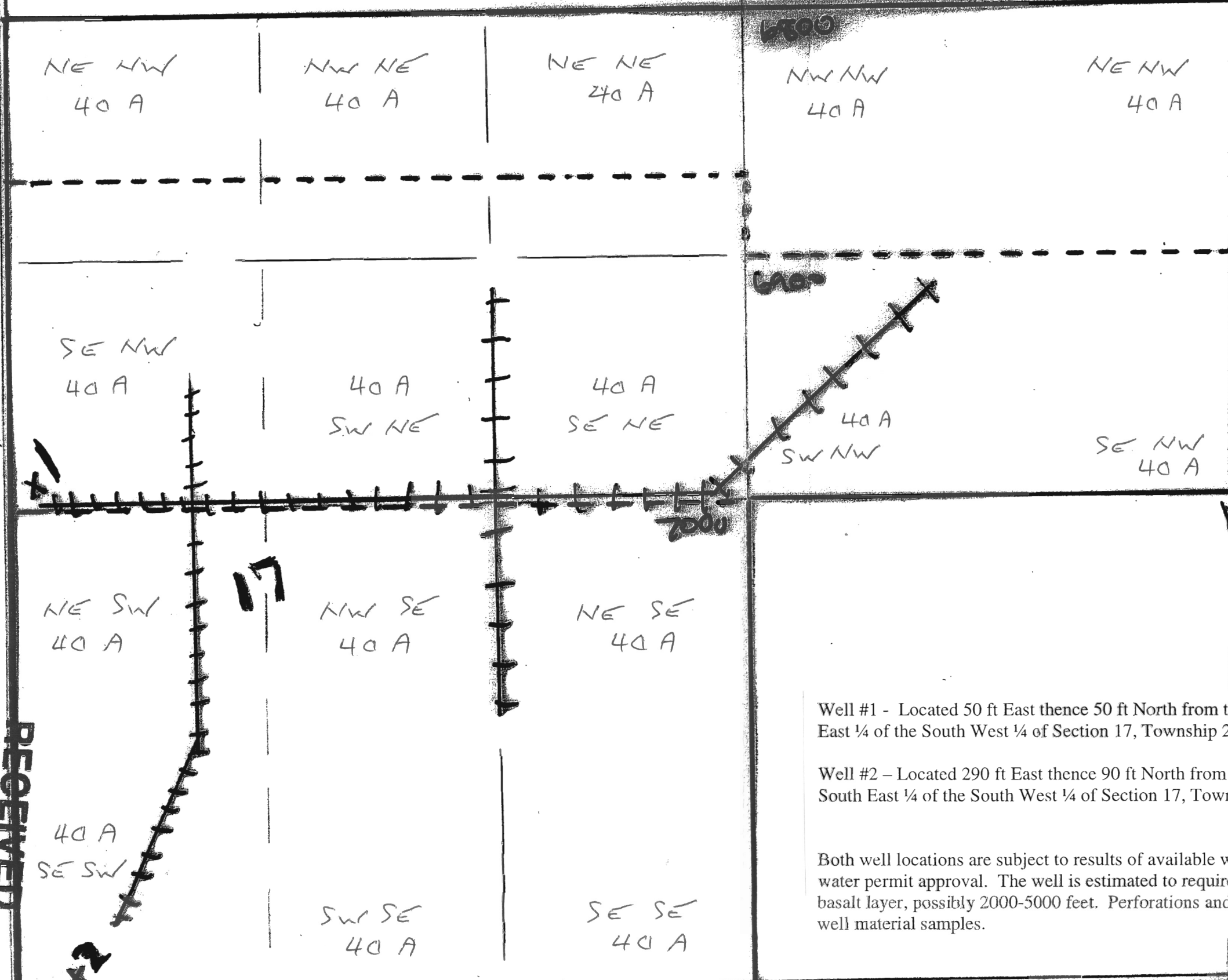
Section 9

CASE ROAD

RECEIVED

JUL 16 2008

WATER RESOURCES DEPT  
SALEM, OREGON



- SUBJECT PROPERTY TO BE UTILIZED
- TAX PARCEL LINES
- SECTION LINE
- - - 1/4 SECTION LINE
- X<sup>1</sup> PROPOSED Well #1
- X<sup>2</sup> PROPOSED Well #2
- +++ 10" Metal

Well #1 - Located 50 ft East thence 50 ft North from the North West Corner of the North East 1/4 of the South West 1/4 of Section 17, Township 2 South, Range 39 East.

Well #2 - Located 290 ft East thence 90 ft North from the South West Corner of the South East 1/4 of the South West 1/4 of Section 17, Township 2 South, Range 39 East.

Both well locations are subject to results of available water locating techniques, pending water permit approval. The well is estimated to require 15" metal casing through the first basalt layer, possibly 2000-5000 feet. Perforations and Seal depth to be determined by well material samples.

2006/JUL/11/FRI 15:08 PIONEER TITLE FAX No. 5095253232 P. 001/001

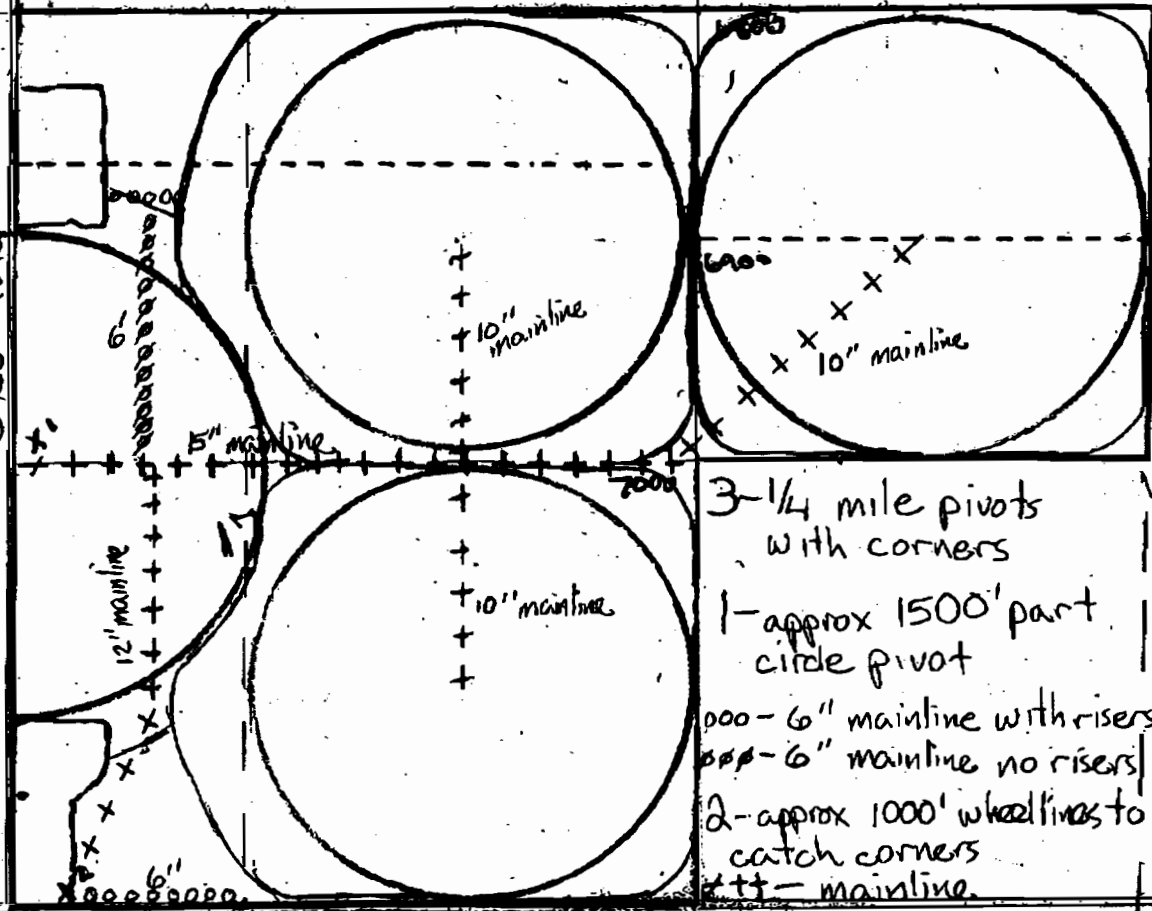
WATER RESOURCES DEPT  
SALEM, OREGON

JUL 16 2008

RECEIVED

Range 2: South  
34 East  
section 9

CASE RONA



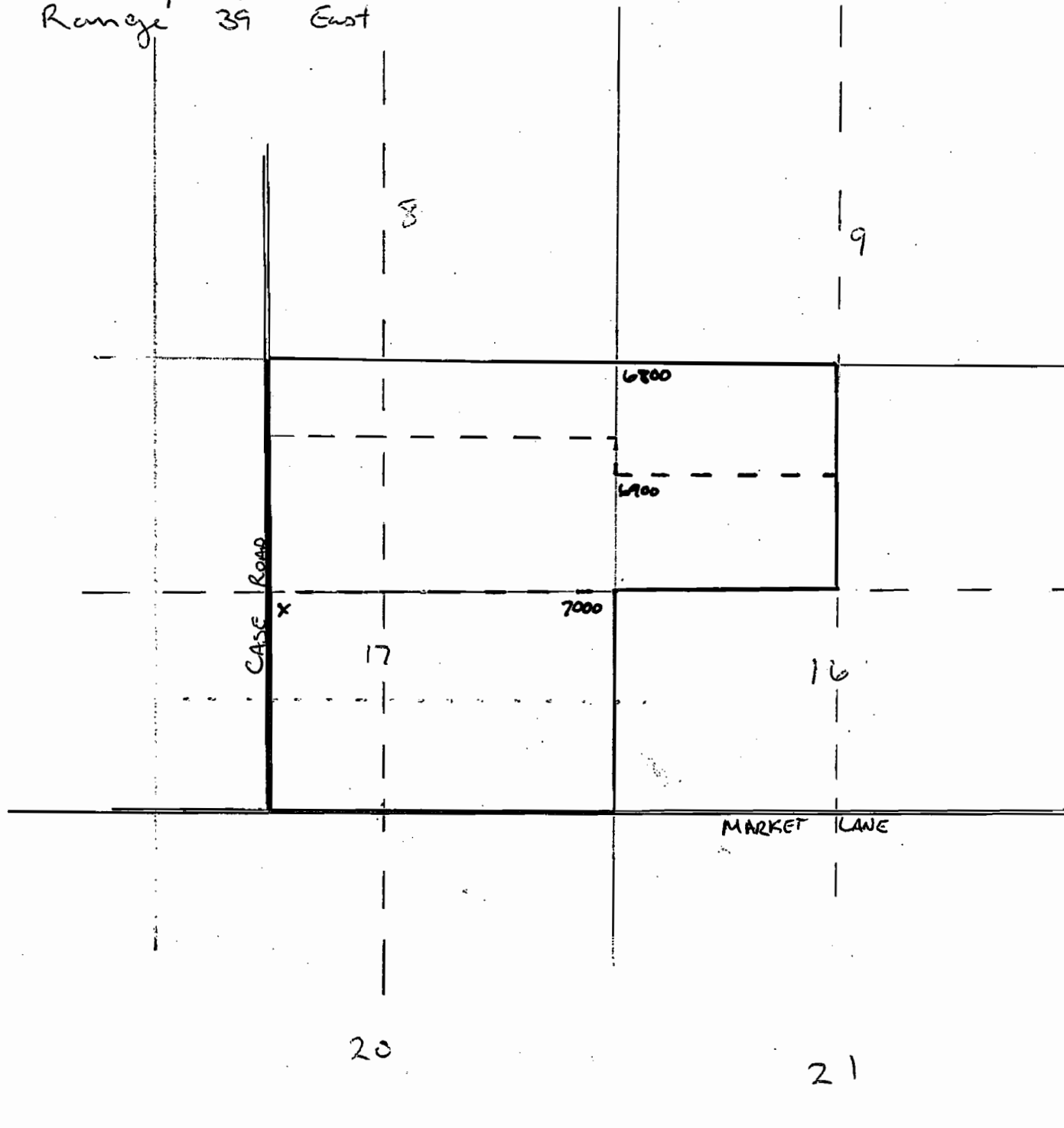
section 9

- SUBJECT PROPERTY TO BE UTILIZED
- TAX PARCEL LINES
- SECTION LINE
- 1/4 SECTION LINE
- X<sup>1</sup> Proposed well #1
- X<sup>2</sup> Proposed well #2

3-1/4 mile pivots with corners  
1- approx 1500' part circle pivot  
000- 6" mainline with risers  
000- 6" mainline no risers  
2- approx 1000' wheel lines to catch corners  
++- mainline  
LAWE

Scale - 1" = 1000'  
NOT TO SCALE  
INFO ONLY

Township 2 South  
Range 39 East



- Subject Property to be irrigated.
- - Tax Parcel Lines
- SECTION LINE
- - 1/4 SECTION LINE
- - - 1/4, 1/4 SECTION LINE
- x Proposed WELL site  
NE 1/4 of  
SW 1/4 of  
SECTION 17

RECEIVED

JUL 16 2008

WATER RESOURCES DEPT  
SALEM, OREGON

