

d for only.

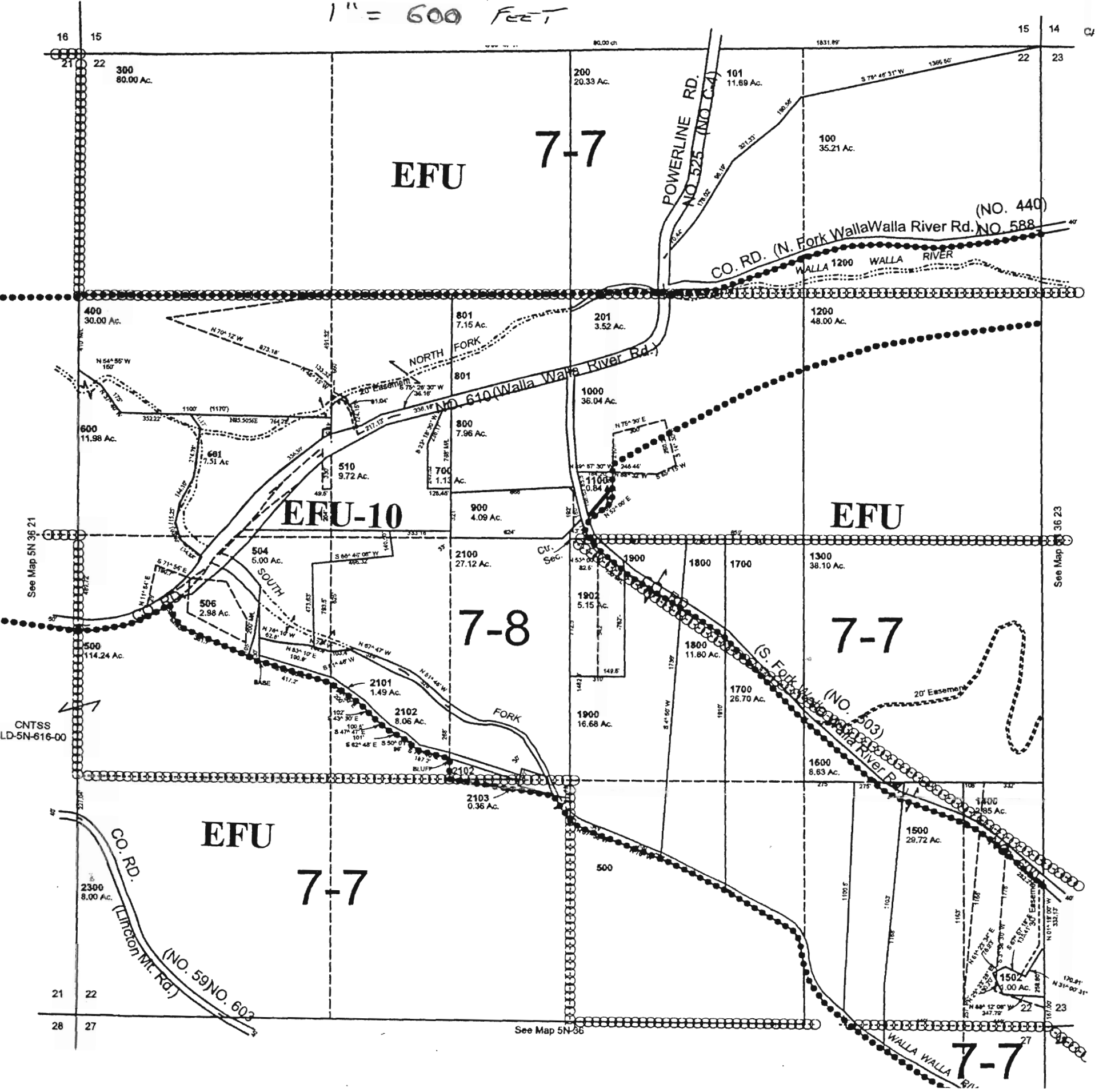


SEC 22 T 5N R 36 E WM  
UMATILLA COUNTY, OR

7/23/03

See FIRM for areas

ADJUSTED CORRECTED  
APPROX SCALE  
1" = 600 FEET



See Map 5N 36 21

CNTSS LD-5N-616-00

See Map 5N 36

See Map 36 23

## Herb Mosgar

---

**From:** Jonnine Skaug  
**Sent:** Tuesday, August 05, 2008 11:45 AM  
**To:** Herb Mosgar  
**Subject:** FW: Alt-Res Application

**Jonnine Skaug**  
**Water Rights/Adjudication Division**  
OR Water Resources Department  
725 Summer Street NE, Suite A  
Salem, OR 97301  
**phone: 503-986-0807**  
**fax: 503-986-0901**

---

**From:** Matthew Steiner [mailto:metropolis\_488@hotmail.com]  
**Sent:** Tuesday, August 05, 2008 11:35 AM  
**To:** Jonnine Skaug  
**Subject:** RE: Alt-Res Application

I approve this amended map for the use of my application for a water permit.  
-Matt Steiner  
509-240-2748

---

**Subject:** Alt-Res Application  
**Date:** Tue, 5 Aug 2008 10:36:02 -0600  
**From:** skaugjl@wrд.state.or.us  
**To:** Metropolis\_488@hotmail.com  
**CC:** mosgarhl@wrд.state.or.us

Hi Matthew,

attached you will find the information Herb asked me to send to you.  
Please contact Herb if you have any questions.

thank you,

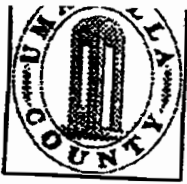
**Jonnine Skaug**  
**Water Rights/Adjudication Division**  
OR Water Resources Department  
725 Summer Street NE, Suite A  
Salem, OR 97301  
**phone: 503-986-0807**  
**fax: 503-986-0901**

---

Reveal your inner athlete and share it with friends on Windows Live. [Share now!](#)

8/5/2008

d for only.



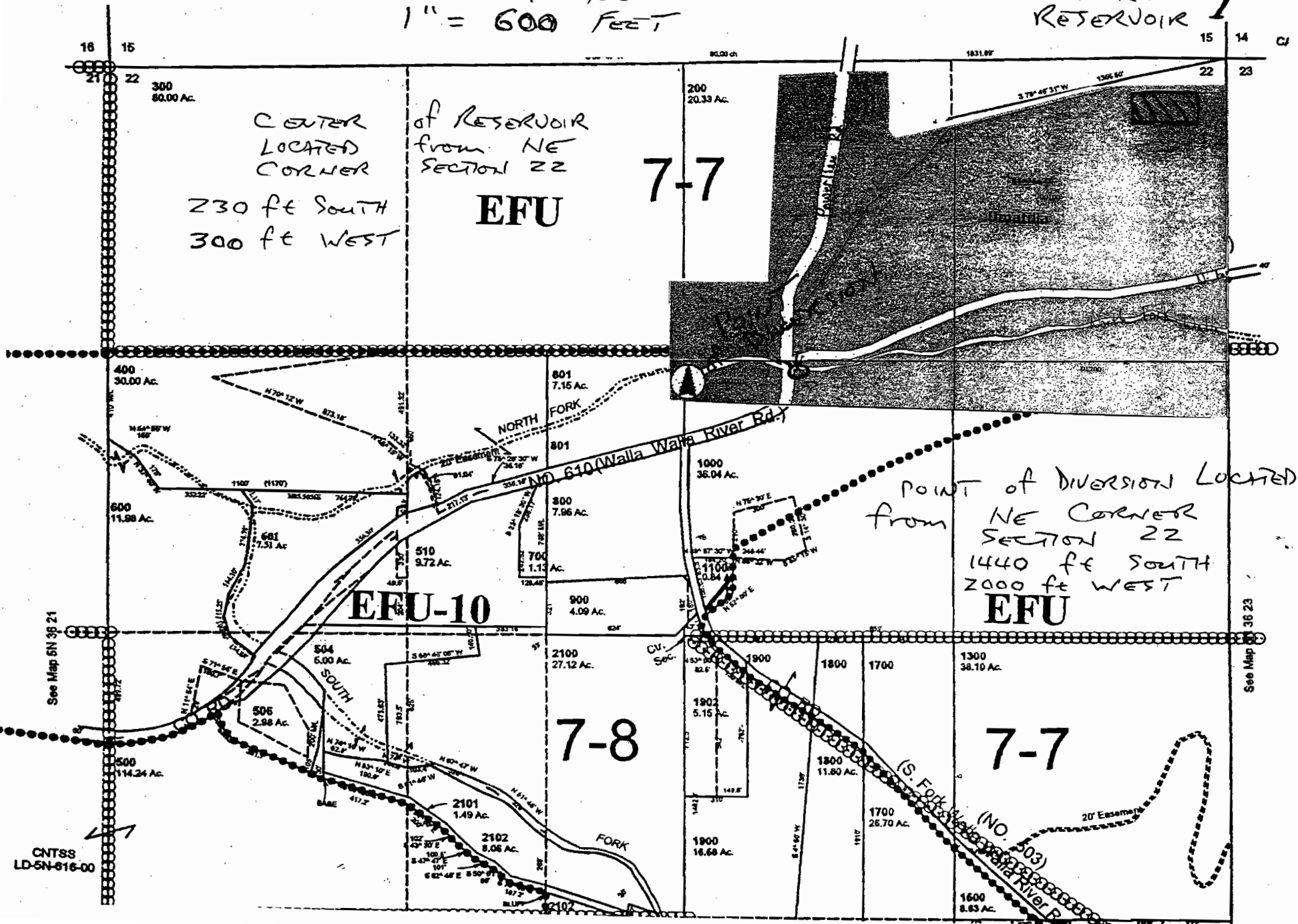
# SEC 22 T 5N R 36 E WM UMATILLA COUNTY, OR

7/23/03

See FIRM for areas

ADJUSTED APPROX CORRECTED SCALE  
1" = 600 FEET

POND RESERVOIR 1



CENTER of RESERVOIR  
LOCATED from NE  
CORNER SECTION 22

230 ft SOUTH  
300 ft WEST

**EFU 7-7**

POINT OF DIVERSION LOCATED  
from NE CORNER  
SECTION 22  
1440 ft SOUTH  
2000 ft WEST  
**EFU**

**EFU-10**

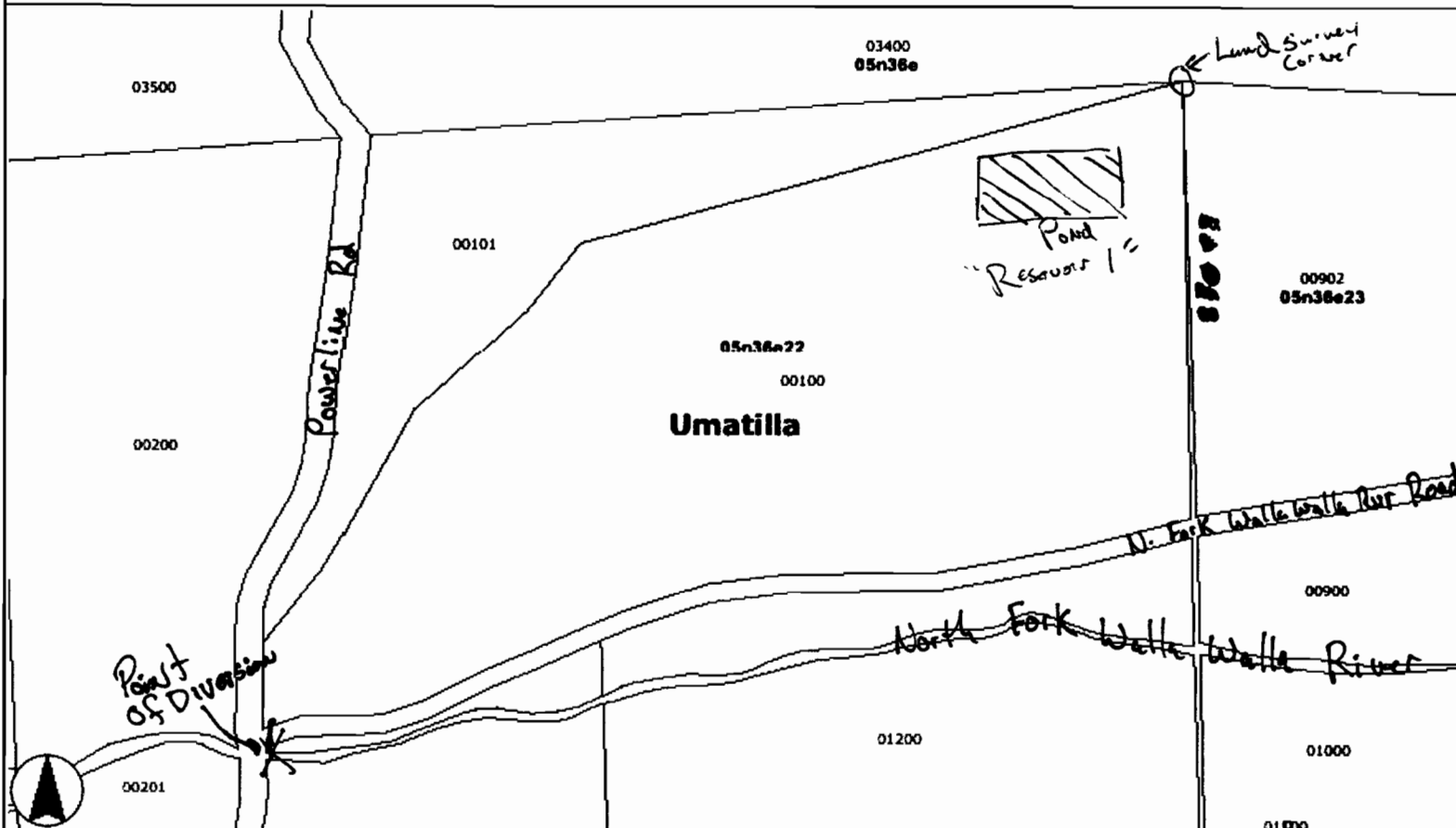
**7-8**

**7-7**

CNTSS  
LD-5N-616-00

See Map 36 23

# ORMAP



## Legend

- Counties
- Taxlots
- Highways
- Maps**
- 05n36e
- 05n36e22
- 05n36e23

**RECEIVED**

AUG 04 2008

WATER RESOURCES DEPT  
SALEM, OREGON

1 inch = 357 ft

## Overview



## Disclaimer

FOR ASSESSMENT PURPOSES ONLY.  
DO NOT RELY ON FOR ANY OTHER USE.

This map was prepared for Assessment purposes only.



SEC 22 T 5N R 36 E WM  
UMATILLA COUNTY, OR

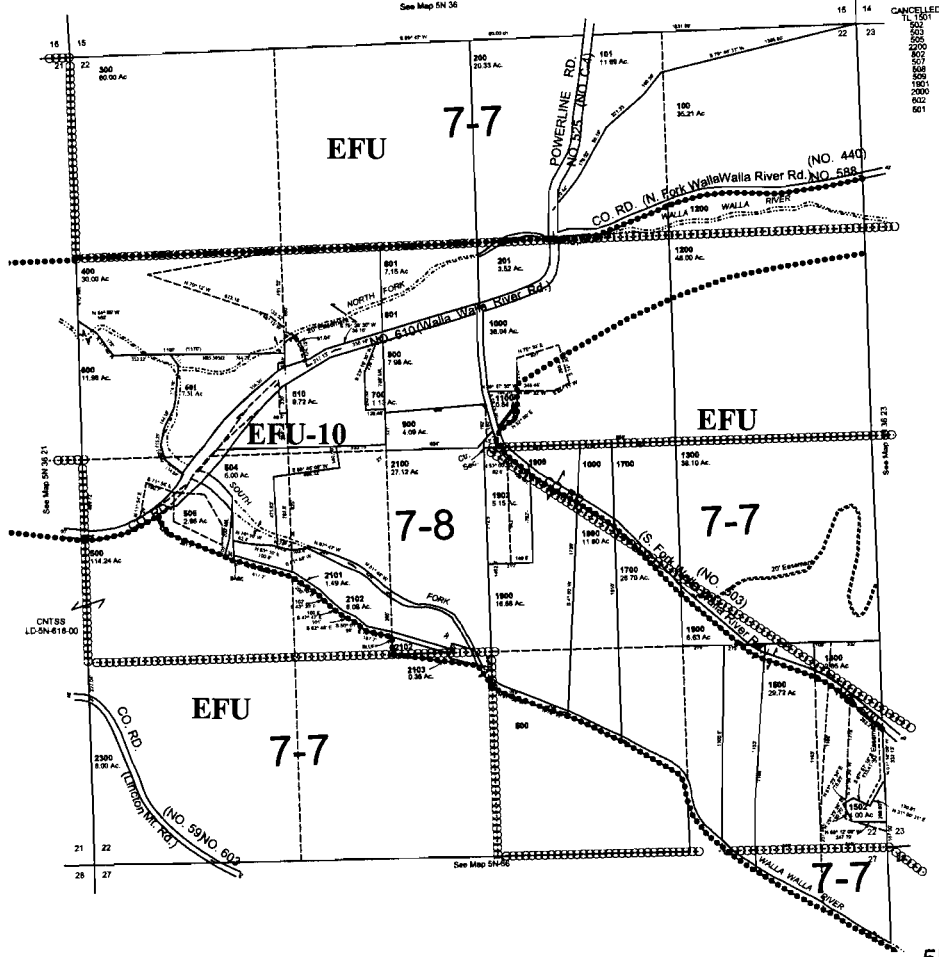
7/23/03

5N3622

See FIRM for areas subject to flooding

SCALE: 1" = 400'

See Map 6N 36



5N3622

**RECEIVED**

**AUG 04 2008**

WATER RESOURCES DEPT  
SALEM, OREGON

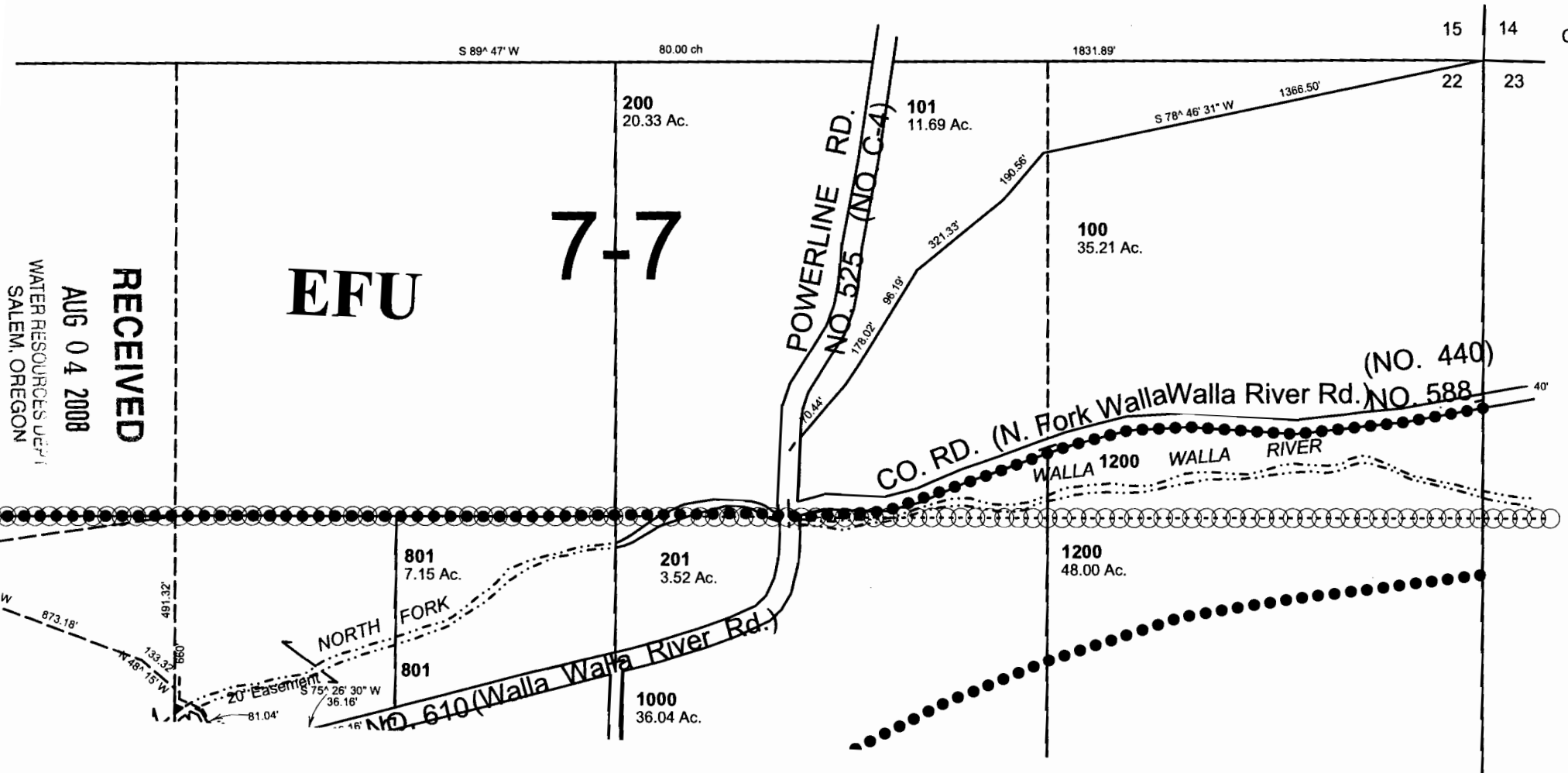
# SEC 22 T 5N R 36 E WM UMATILLA COUNTY, OR

7/23/03

SCALE: 1" = 400'

See FIRM for areas s

See Map 5N 36



RECEIVED  
AUG 04 2008  
WATER RESOURCES DEPT  
SALEM, OREGON