

RECEIVED
 AUG 04 2008
 WATER RESOURCES DEPT
 SALEM, OREGON

J. Eades D.L.C. 47
 P.O.D.

D.L.C. 66

T. Kimsey
D.L.C. 46

14

Corrected ADJUSTED
 APPROX. SCALE
 1" = 600 FT.

POD LOCATED FROM
 CENTER SECTION 14
 T6S R 5W
 1100' FE NORTH
 0' FE WEST

DAVID Aug 4, 2008








FINAL PROOF SURVEY

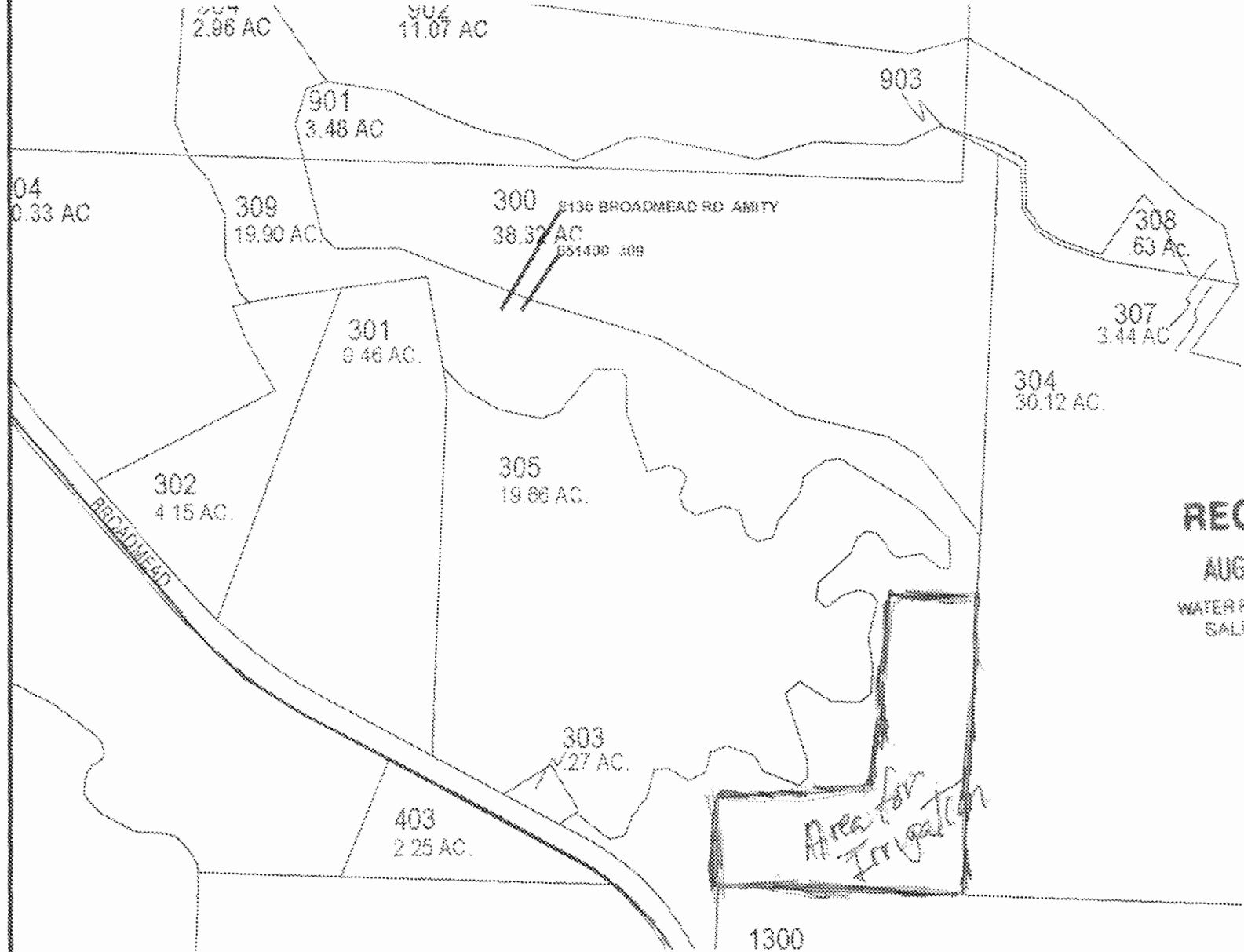
24552 21652

Section No. R-24551 to R-1405

Polk County Map

6.5.14

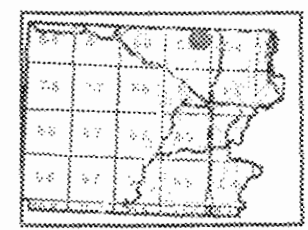
-  Road
-  COMPACT
-  Taxroll
-  Tax lot Arrowroll
-  Water Boundary
-  Parcel
-  Update



RECEIVED

AUG 04 2008

WATER RESOURCES DEPT
SALEM, OREGON



1300

This map was produced using the Polk County GIS data. The GIS data is maintained by the county to support its government activities. The county is not responsible for map errors, omissions, misuse or misinterpretations.

1" = 350 ft



8/1/2008

