

WATER RIGHTS APPLICATION MAP

T6S, R4W, WM

TL 100 (6S 4 23)

TL 200 (6S 4 24)

TL 404 (6S 4 13)

POLK COUNTY, OREGON

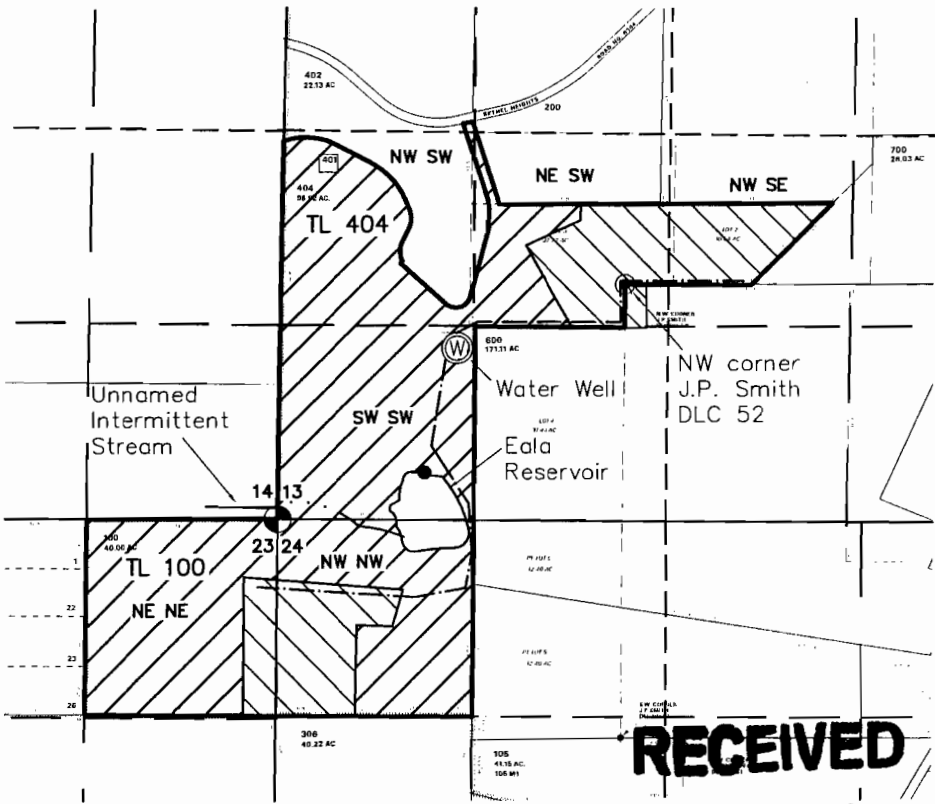
WILLAMETTE RIVER BASIN

PREPARED FOR:
VINEYARD HOLDINGS, LLC
P.O. BOX 280
DUNDEE OR 97115



IRRIGATED ACRES CERT. 62251 & 62252		
SEC. 13	NE SW	13.6 AC
	NE SW	0.6 AC
	NW SE	10.9 AC
	TOTAL - 25.1 AC	
SEC. 24	NW NW	12.8 AC
	TOTAL - 12.8 AC	
SEC. 23	NE NE	5.1 AC
	TOTAL - 5.1 AC	
TOTAL IRRIGATED AC 43.0		

NEW IRRIGATION ACREAGE		
SEC. 13	NW SW	21.5 AC
	NE SW	9.9 AC
	NW SE	10.7 AC
	SW SW	36.2 AC
		TOTAL - 78.3 AC
SEC. 24	NW NW	25.3 AC
	TOTAL - 25.3 AC	
SEC. 23	NE NE	32.3 AC
	TOTAL - 32.3 AC	
PROPOSED IRRIGATION AC 135.9		
TOTAL IRRIGATION ACREAGE 178.9		



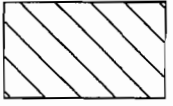
RECEIVED

APR 24 2008

WATER RESOURCES DEPT
SALEM OREGON

● POINT OF DIVERSION FOR R9965 IS LOCATED 450' NORTH AND 950' EAST OF THE SW COR. OF S13

Ⓜ WATER WELL (POLK 50658) IS LOCATED 1180' NORTH AND 1230' EAST OF THE SW COR. OF S13



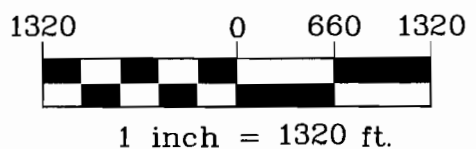
IRRIGATION AREAS - WATER RIGHT CERTIFICATES 62251 & 62252



PROPOSED IRRIGATION AREA: 135.9 ACRES

--- EXISTING MAIN IRRIGATION PIPES (5" & 4" DIA.)
[ADDITIONAL MAIN LINES NOT DESIGNED]

THIS MAP WAS PREPARED FOR THE PURPOSE OF IDENTIFYING THE LOCATION OF A WATER RIGHT ONLY AND IS NOT INTENDED TO PROVIDE LEGAL DIMENSIONS OR LOCATION OF PROPERTY OWNERSHIP LINES.



MAP BASE:
POLK COUNTY TAX MAPS 6.4.13,
6.4.23, & 6.4.24



Project: 307-2-142
Drawing: 3072142 A.dwg
By: CVB/WPK
Checked by: EAU
Date: 3-28-08

App No 587156

IMPORTANT
This Map for Assessment
and Taxation Purposes
11 12 ONLY

SEC.13 T6S R4W WM
POLK COUNTY

See Map 6.4.12

Scale 1" = 400' → 380'

6.4.13

32-17

300
300M1
40.00 AC

100
215.85 AC

101

400
400M1
29.27 AC

200
52.20 AC

402
22.13 AC

401

404
38.92 AC



32-11

700
26.03 AC

LOT 1
30.64 AC

LOT 3
37.77 AC

LOT 2
30.84 AC

703
19.56 AC

702
12.04 AC

LOT 5
18.71 AC

600
171.11 AC

LOT 4
31.66 AC

PT LOT 5
32.30 AC

608
6.64 AC

609
6.70 AC

610
610 A1
10.00 AC

605
2.42 AC

602
3.88 AC

604
2.41 AC

614
4.70 AC

603
2.49 AC

611
4.77 AC

612
4.53 AC

613
2.66 AC

601
2.00 AC

Canceled No.

N.W. CORNER
P.E. SMITH
D.L.C. NO. 48
201
202
403
500
501

See map 6.3.18

S.W. CORNER
P.E. SMITH
D.L.C. NO. 45

WATER RESOURCES DEPT
SALEM OREGON

APR 24 2008

RECEIVED

See Map 6.4.24

See Map 6.3.19

08/02/06

APP NOS-87156

6.4.13

9

IMPORTANT
This Map for Assessment
and Taxation Purposes
ONLY

**SEC.24 T6S R4W WM
POLK COUNTY**

Scale 1" = ~~400~~ → 280'

6.4.24

14 13
23 24

200
40.00 AC



See Map 6.4.13

100
88.80 AC.

PT. LOT 5
32.40 AC.

32-11

SW CORNER
J.P. SMITH
D.L.C. NO. 82

105
41.15 AC.
105 M1

N.W. CORNER
CLAIBOURN C. WALKER
D.L.C. NO. 51

601
5.16 AC

600
42.59 AC

401
89.20 AC

LOT 1
40.51 AC

101
8.02 AC

302
49.28 AC

32-17

LOT 2
42.00 AC.

402
95.40 AC

400
4.55 AC

303
8.96 AC

305
5.00 AC

304
5.22 AC

300
27.04 AC

LOT 3
28.49 AC

301
1.90 AC

SW CORNER
CLAIBOURN C. WALKER
D.L.C. NO. 51

N.W. CORNER
W.B. WALKER
D.L.C. NO. 49

S 1/4 S.E. CORNER
CLAIBOURN C. WALKER
D.L.C. NO. 48

N.E. CORNER
JOHN PHILLIPS
D.L.C. NO. 50

23 24

26 25

24 19

25 30

See Map 6.4.25

RECEIVED
APR 24 2008
WATER RESOURCES DEPT
SALEM OREGON

Canceled No.

103
104
500

See Map 6.3.19

08/02/06

App No 5-87156

6.4.24

IMPORTANT
This Map for Assessment
and Taxation Purposes
ONLY

6.4.23

See Map 6.4.14

14 13

23 24

45-5

100
40.00 AC



32-11

Canceled No.

403
600

32-17

See Map 6.4.24

See Map 6.4.22

45-1

701
39.15 AC

1/4 CORNER

703
24.93 AC

801
93.03 AC

805
2.00 AC

802
63.00 AC

45-5

704
3.83 AC

804
2.00 AC

700
89.71 AC

702
0.53 AC

800
7.17 AC

803
3.53 AC

N.W.
CORNER
JOHN
PHILIPS
D.L.C.
NO 50

See Map 6.4.26

22 23

26 25

RECEIVED
APR 24 2008
WATER RESOURCES DEPT
SALEM OREGON

08/02/06

App No S-87156

6.4.23