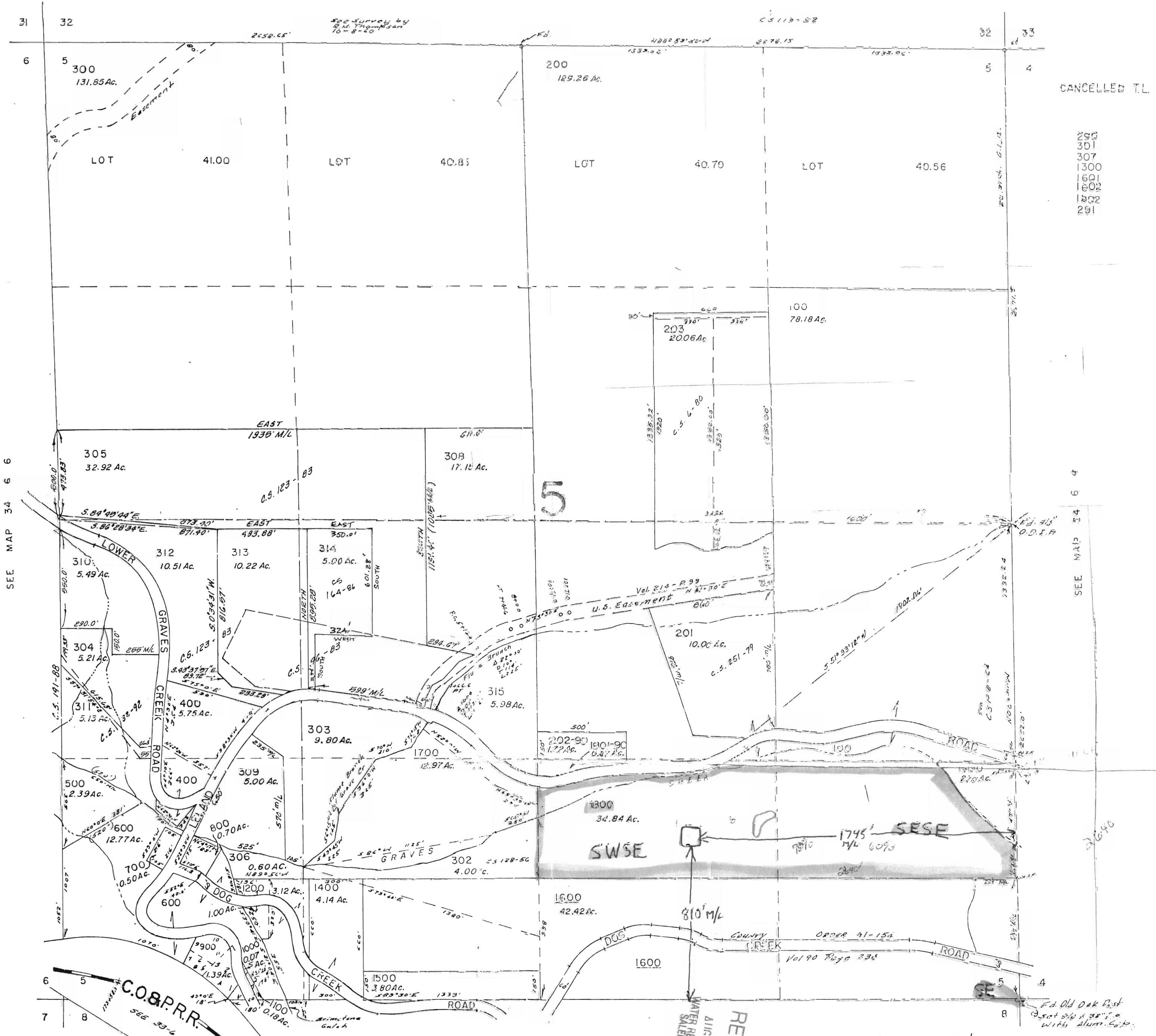


JOSEPHINE COUNTY

Scale 1" = 400'

SEE MAP 33 6 32

This map was prepared for assessment purpose only.



CANCELLED T.L.

- 290
- 301
- 307
- 1300
- 1601
- 1602
- 1602
- 291

Pond "2"
 810' N x 1745' W
 Square Pond
 of SE Corner

2525 Leland Rd.
 Sunny Valley, OR.

SEE MAP 34 6 8

RECEIVED
 WATER RESOURCES
 SALEM, OREGON
 APR 14 20

Fd. Old Oak Post
 set 4 1/2 x 3 1/2" x 1/2"
 with Alum. Exp.