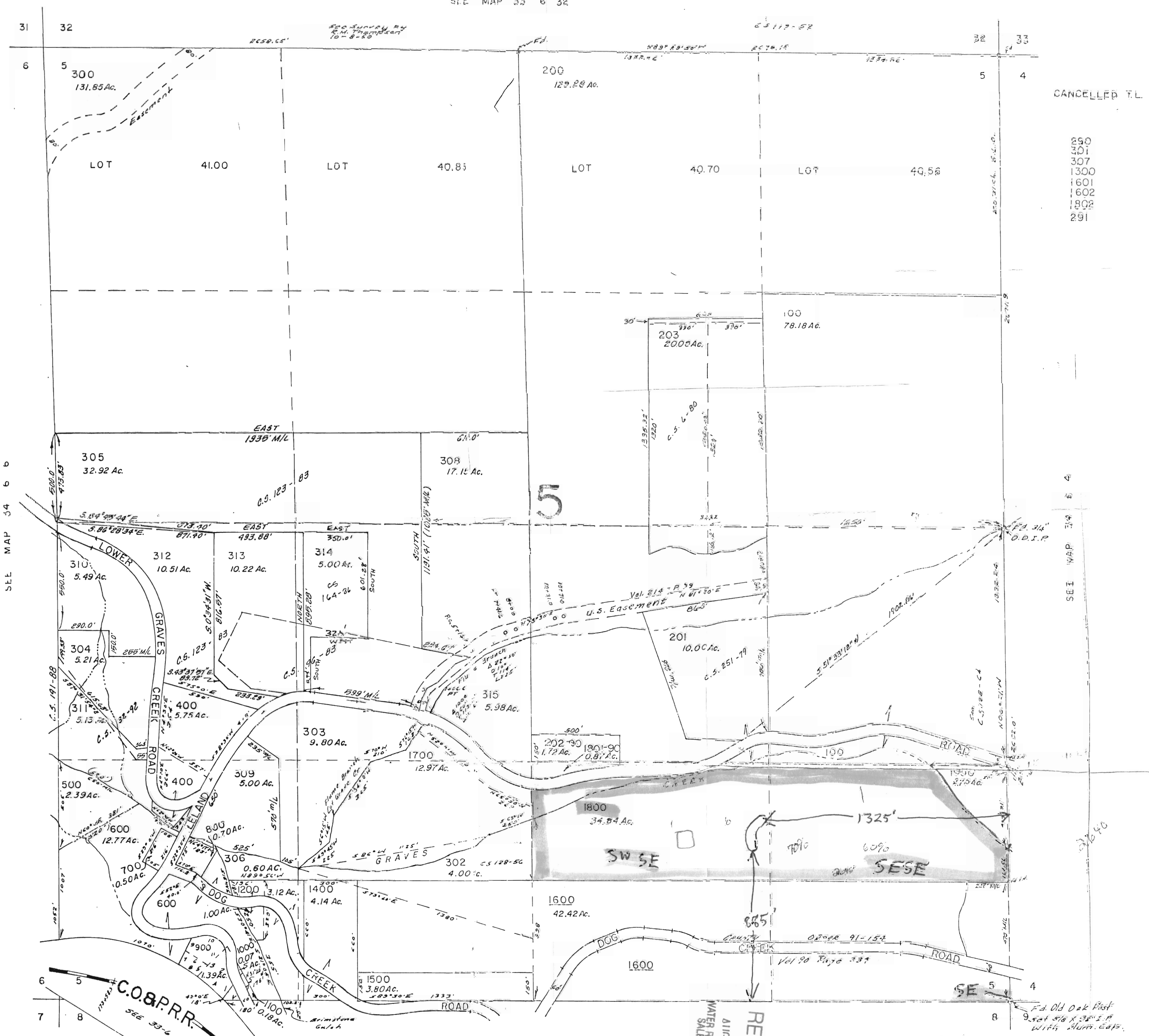


SECTION 34 T.15S. R.10W. W.1M

Scale 1" = 400'

SEE MAP 33 6 32

This map was prepared for assessment purpose only.



CANCELLED T.L.

290  
301  
307  
1300  
1601  
1602  
1802  
291



Pond "1"  
885' N and 1325' W  
of SE corner  
Other Pond

SEE MAP 34 6 8

RECEIVED  
AUG 14 2008  
WATER RESOURCES DE  
SALEM, OREGON

2525 Leland Rd.  
Sunny Valley, OR.

71.900  
N36°30'E  
N56°40'W  
S44°30'W  
S34°00'W  
N44°30'E

SEE MAP 34 6 6

SEE MAP 34 6 4

Ed. Old Oak Post  
9.5x4.5x3.5 I.P.  
with Alum. caps.