

Munkers

T 1S R 25E Section 33 Tax Lot 5700, 5701, & 5702



1 inch equals 600 feet

- ★ = well ID#39371: 2190 feet East and 2170 feet North of the SW corner of section 33
- = well ID#80299: 2435 feet East and 160 feet North of the SW corner of section 33

- = supplemental irrigation to C-26159
- = irrigation from Well ID# 39371
- = irrigation from Well ID# 80299

ADJUSTED CORRECTED
APPROX SCALE
1" = 600 FEET

RECEIVED

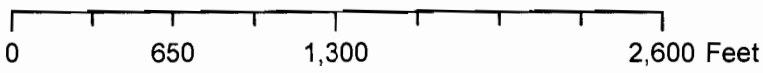
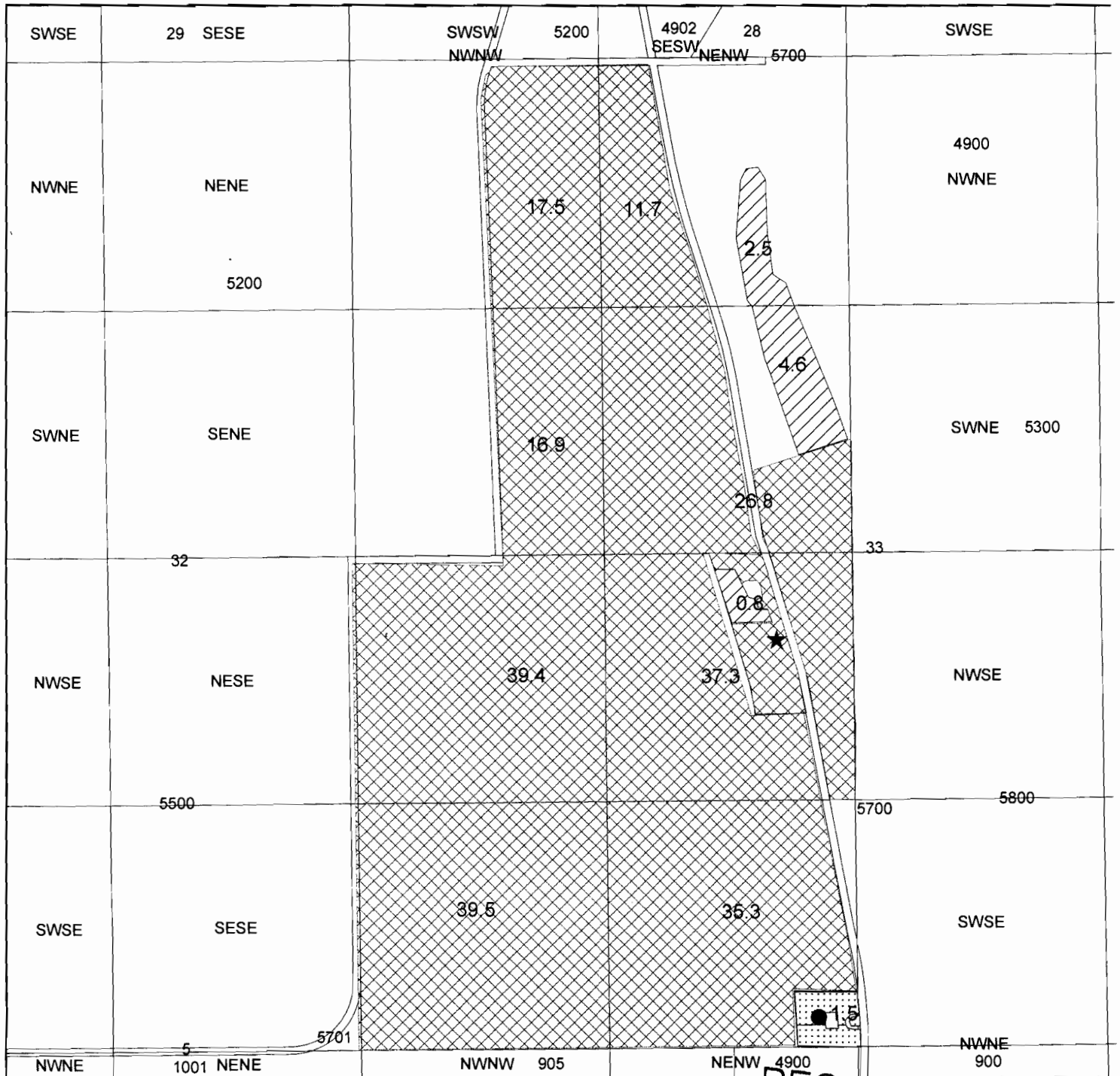
AUG 15 2008
WATER RESOURCES DEPT.
SALEM, OREGON



This product is for informational purposes and may not have been prepared for, or be suitable for legal, engineering, or surveying purposes. Users of this information should review or consult the primary data and information sources to ascertain the usability of the information.

Munkers

T 1S R 25E Section 33 Tax Lot 5700, 5701, & 5702



1 inch equals 770 feet

- ★ = well ID#39371: 2190 feet East and 2170 feet North of the SW corner of section 33
- = well ID#80299: 2435 feet East and 160 feet North of the SW corner of section 33
- = supplemental irrigation to C-26159
- = irrigation from Well ID# 39371
- = irrigation from Well ID# 80299

RECEIVED

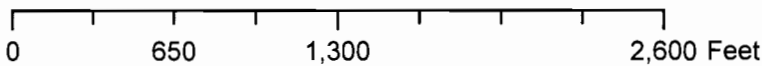
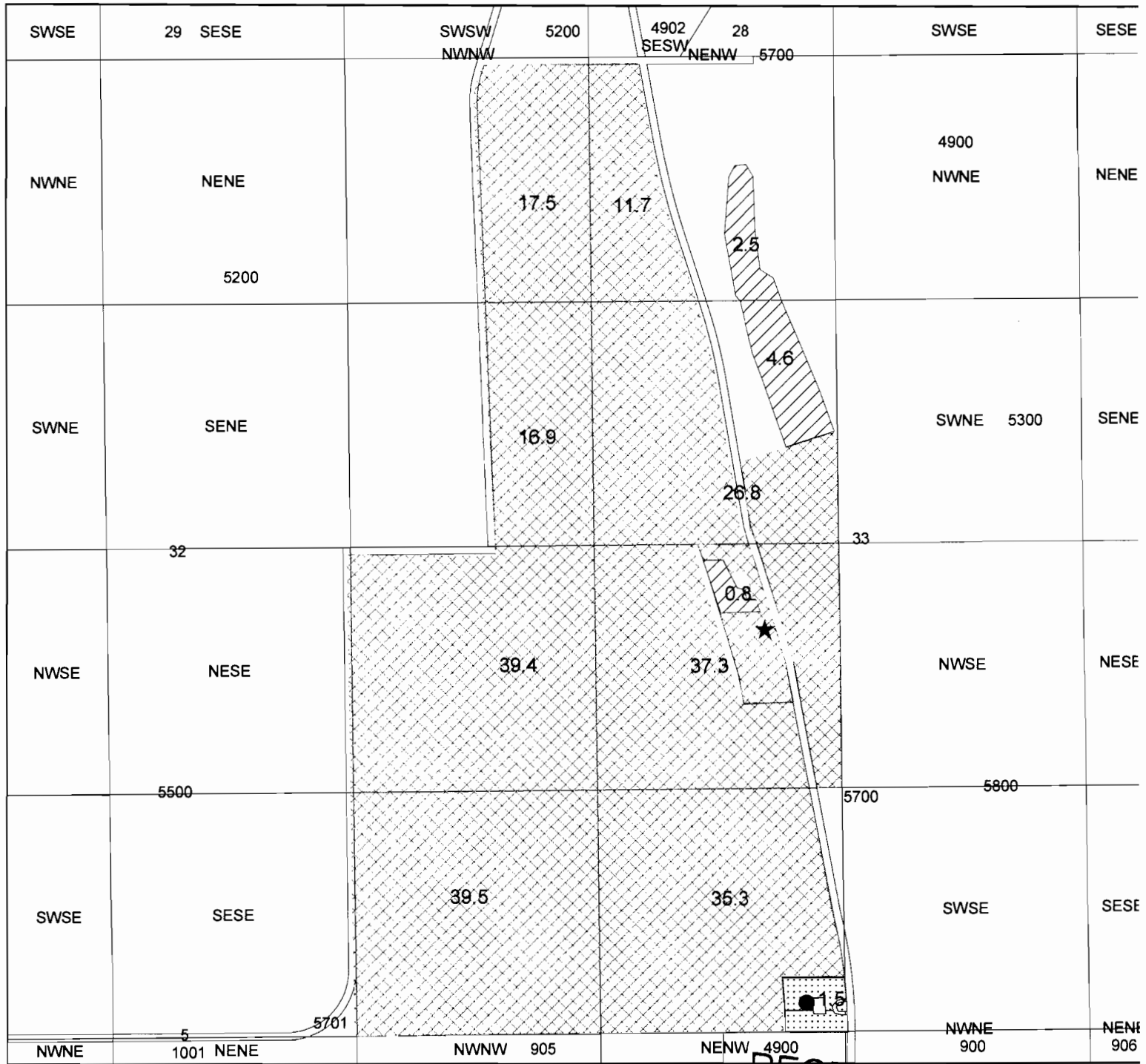
AUG 15 2008
WATER RESOURCES DEPT.
SALEM, OREGON



This product is for informational purposes and may not have been prepared for, or be suitable for legal, engineering, or surveying purposes. Users of this information should review or consult the primary data and information sources to ascertain the usability of the information.

Munkers

T 1S R 25E Section 33 Tax Lot 5700, 5701, & 5702



1 inch equals 770 feet

★ = well ID#39371: 2190 feet East and 2170 feet North of the SW corner of section 33

● = well ID#80299: 2435 feet East and 160 feet North of the SW corner of section 33

= supplemental irrigation to C-26159

▨ = irrigation from Well ID# 39371

⋯ = irrigation from Well ID# 80299

--OWRD GIS jtc, WMdistrict21: Munkers_080808

RECEIVED

AUG 15 2008

WATER RESOURCES DEPT.
SALEM, OREGON



This product is for informational purposes and may not have been prepared for, or be suitable for legal, engineering, or surveying purposes. Users of this information should review or consult the primary data and information sources to ascertain the usability of the information.

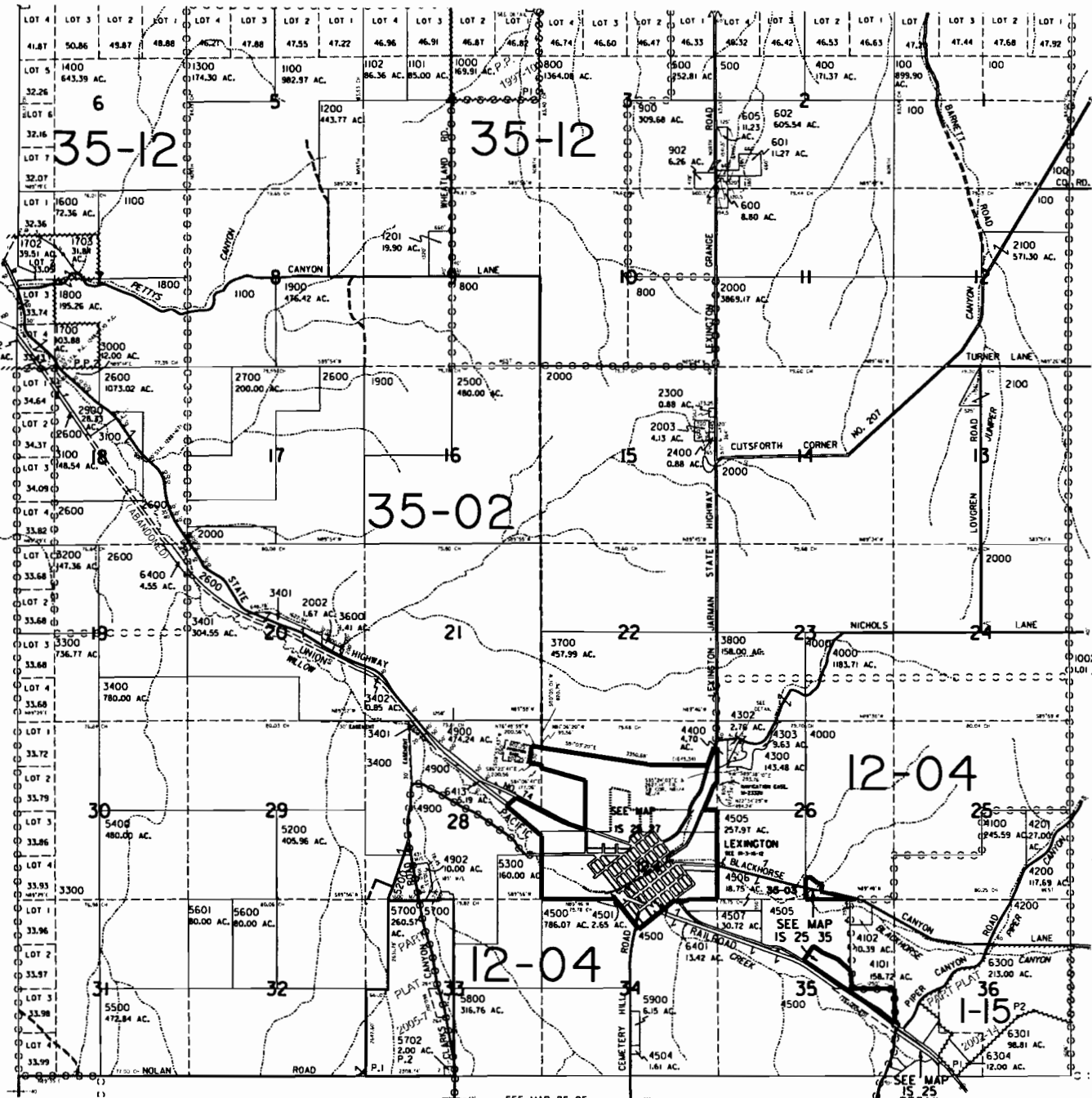


SCALE IN FEET
1" = 2000'

DETAIL
PARCEL 1702

PART OF
PART. PLAT
1997-1

SEE MAP IS 24



LEXINGTON

CANCELLED
NUMBERS

- T.L. 200 T.L. 490
- T.L. 300 T.L. 4903
- T.L. 603 T.L. 4904
- T.L. 604 T.L. 4905
- T.L. 700 T.L. 4906
- T.L. 801 T.L. 5000
- T.L. 802 T.L. 5001
- T.L. 901 T.L. 570
- T.L. 1001 T.L. 5702
- T.L. 1701 T.L. 6000
- T.L. 2001 T.L. 6100
- T.L. 2200 T.L. 6201
- T.L. 2800 T.L. 6202
- T.L. 3073 T.L. 6403
- T.L. 3074 THRU 6411
- T.L. 3500 T.L. 6414
- T.L. 3701
- T.L. 3702
- T.L. 3900
- T.L. 4300
- T.L. 4300U1
- T.L. 4300U2
- T.L. 43
- T.L. 45
- T.L. 45U1
- T.L. 45U2
- T.L. 4600
- T.L. 4602
- T.L. 4603
- T.L. 4604
- T.L. 4605
- T.L. 4606
- T.L. 4607
- T.L. 4608
- T.L. 4609
- T.L. 4610
- T.L. 4611
- T.L. 4612
- T.L. 4613
- T.L. 4614
- T.L. 4615
- T.L. 4616
- T.L. 4617
- T.L. 4618
- T.L. 4619
- T.L. 4620
- T.L. 4621
- T.L. 4622
- T.L. 4623
- T.L. 4624
- T.L. 4625
- T.L. 4626
- T.L. 4627
- T.L. 4628
- T.L. 4629
- T.L. 4630
- T.L. 4631
- T.L. 4632
- T.L. 4633
- T.L. 4634
- T.L. 4635
- T.L. 4636
- T.L. 4637
- T.L. 4638
- T.L. 4639
- T.L. 4640
- T.L. 4641
- T.L. 4642
- T.L. 4643
- T.L. 4644
- T.L. 4645
- T.L. 4646
- T.L. 4647
- T.L. 4648
- T.L. 4649
- T.L. 4650
- T.L. 4651
- T.L. 4652
- T.L. 4653
- T.L. 4654
- T.L. 4655
- T.L. 4656
- T.L. 4657
- T.L. 4658
- T.L. 4659
- T.L. 4660
- T.L. 4661
- T.L. 4662
- T.L. 4663
- T.L. 4664
- T.L. 4665
- T.L. 4666
- T.L. 4667
- T.L. 4668
- T.L. 4669
- T.L. 4670
- T.L. 4671
- T.L. 4672
- T.L. 4673
- T.L. 4674
- T.L. 4675
- T.L. 4676
- T.L. 4677
- T.L. 4678
- T.L. 4679
- T.L. 4680
- T.L. 4681
- T.L. 4682
- T.L. 4683
- T.L. 4684
- T.L. 4685
- T.L. 4686
- T.L. 4687
- T.L. 4688
- T.L. 4689
- T.L. 4690
- T.L. 4691
- T.L. 4692
- T.L. 4693
- T.L. 4694
- T.L. 4695
- T.L. 4696
- T.L. 4697
- T.L. 4698
- T.L. 4699
- T.L. 4700
- T.L. 4701
- T.L. 4702
- T.L. 4703
- T.L. 4704
- T.L. 4705
- T.L. 4706
- T.L. 4707
- T.L. 4708
- T.L. 4709
- T.L. 4710
- T.L. 4711
- T.L. 4712
- T.L. 4713
- T.L. 4714
- T.L. 4715
- T.L. 4716
- T.L. 4717
- T.L. 4718
- T.L. 4719
- T.L. 4720
- T.L. 4721
- T.L. 4722
- T.L. 4723
- T.L. 4724
- T.L. 4725
- T.L. 4726
- T.L. 4727
- T.L. 4728
- T.L. 4729
- T.L. 4730
- T.L. 4731
- T.L. 4732
- T.L. 4733
- T.L. 4734
- T.L. 4735
- T.L. 4736
- T.L. 4737
- T.L. 4738
- T.L. 4739
- T.L. 4740
- T.L. 4741
- T.L. 4742
- T.L. 4743
- T.L. 4744
- T.L. 4745
- T.L. 4746
- T.L. 4747
- T.L. 4748
- T.L. 4749
- T.L. 4750
- T.L. 4751
- T.L. 4752
- T.L. 4753
- T.L. 4754
- T.L. 4755
- T.L. 4756
- T.L. 4757
- T.L. 4758
- T.L. 4759
- T.L. 4760
- T.L. 4761
- T.L. 4762
- T.L. 4763
- T.L. 4764
- T.L. 4765
- T.L. 4766
- T.L. 4767
- T.L. 4768
- T.L. 4769
- T.L. 4770
- T.L. 4771
- T.L. 4772
- T.L. 4773
- T.L. 4774
- T.L. 4775
- T.L. 4776
- T.L. 4777
- T.L. 4778
- T.L. 4779
- T.L. 4780
- T.L. 4781
- T.L. 4782
- T.L. 4783
- T.L. 4784
- T.L. 4785
- T.L. 4786
- T.L. 4787
- T.L. 4788
- T.L. 4789
- T.L. 4790
- T.L. 4791
- T.L. 4792
- T.L. 4793
- T.L. 4794
- T.L. 4795
- T.L. 4796
- T.L. 4797
- T.L. 4798
- T.L. 4799
- T.L. 4800

SEE MAP IS 25
SEC 4
1" = 400'



DETAIL
SEC. 26

PARCEL 5702

Revised
5/22/2008, DBJ
IS 25
& INDEX
LEXINGTON

RECEIVED
AUG 15 2008
WATER RESOURCES DEPT.
SALEM, OREGON

SEE MAP 25 25

SEE MAP
IS 25
DETAIL