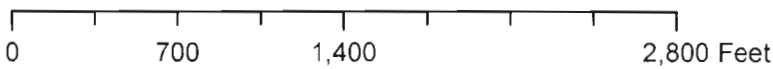
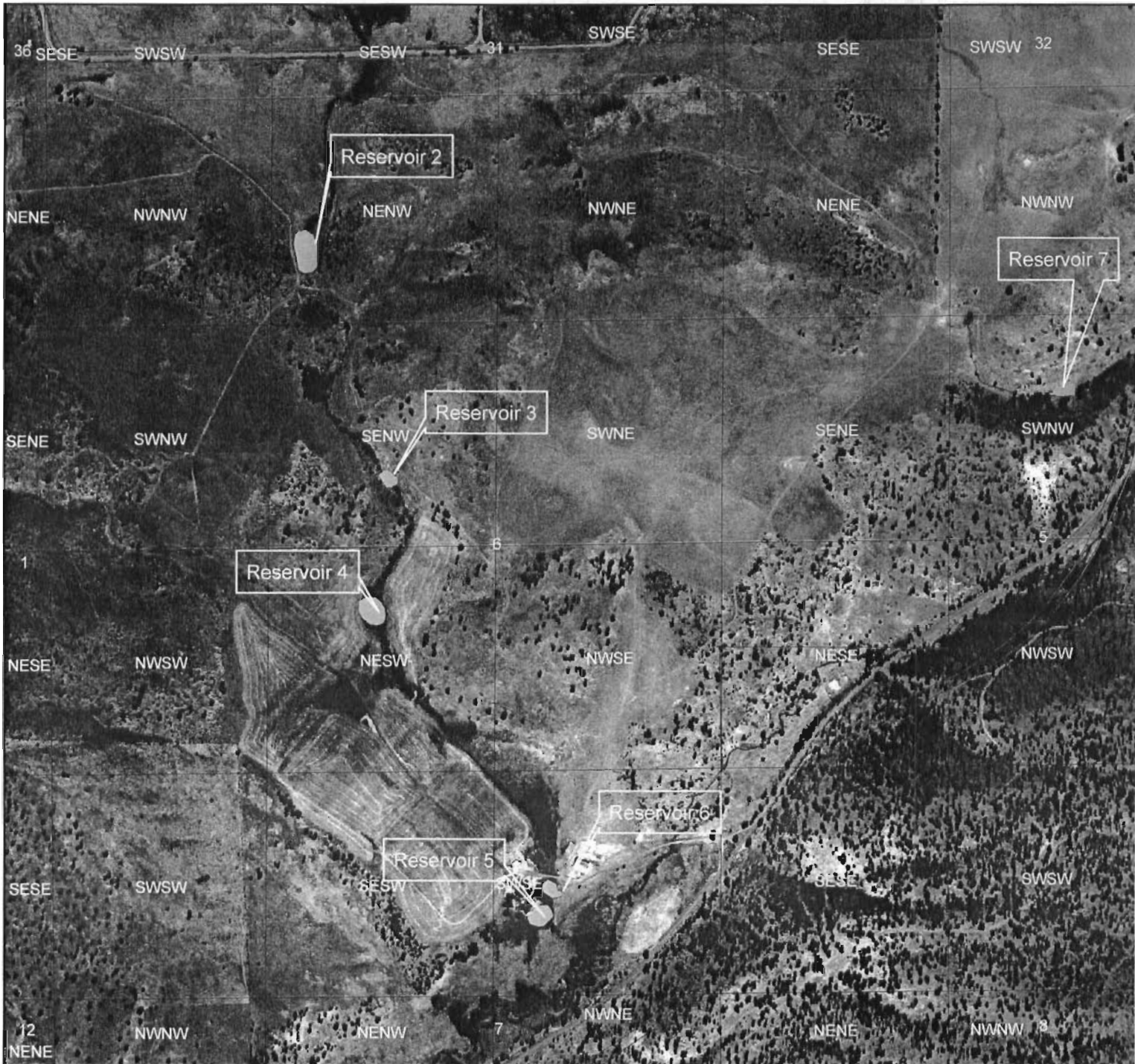


Kemmer T 8S R 24E Section 5 & 6 Tax Lot 700

RECEIVED
AUG 28 2008
WATER RESOURCES DEPT
SALEM, OREGON



1 inch equals 813.523886 feet

- = Reservoir 2: NENW of Section 6 T8S R24E WM; Center of Reservoir- 875 feet South and 1475 feet East from the NW corner of Section 6
- = Reservoir 3: SENW of Section 6 T8S R24E WM; Center of Reservoir- 385 feet North and 590 feet West from the Center of Section 6
- = Reservoir 4: **NESW** of Section 6 T8S R24E WM; Center of Reservoir- 360 feet South and 700 feet West from the Center of Section 6

This product is for informational purposes and may not have been prepared for, or be suitable for legal, engineering, or surveying purposes. Users of this information should review or consult the primary data and information sources to ascertain the usability of the information.

