

BOOK 2

SEP 18 2008

WATER RESOURCES DEPT
SALEM, OREGON

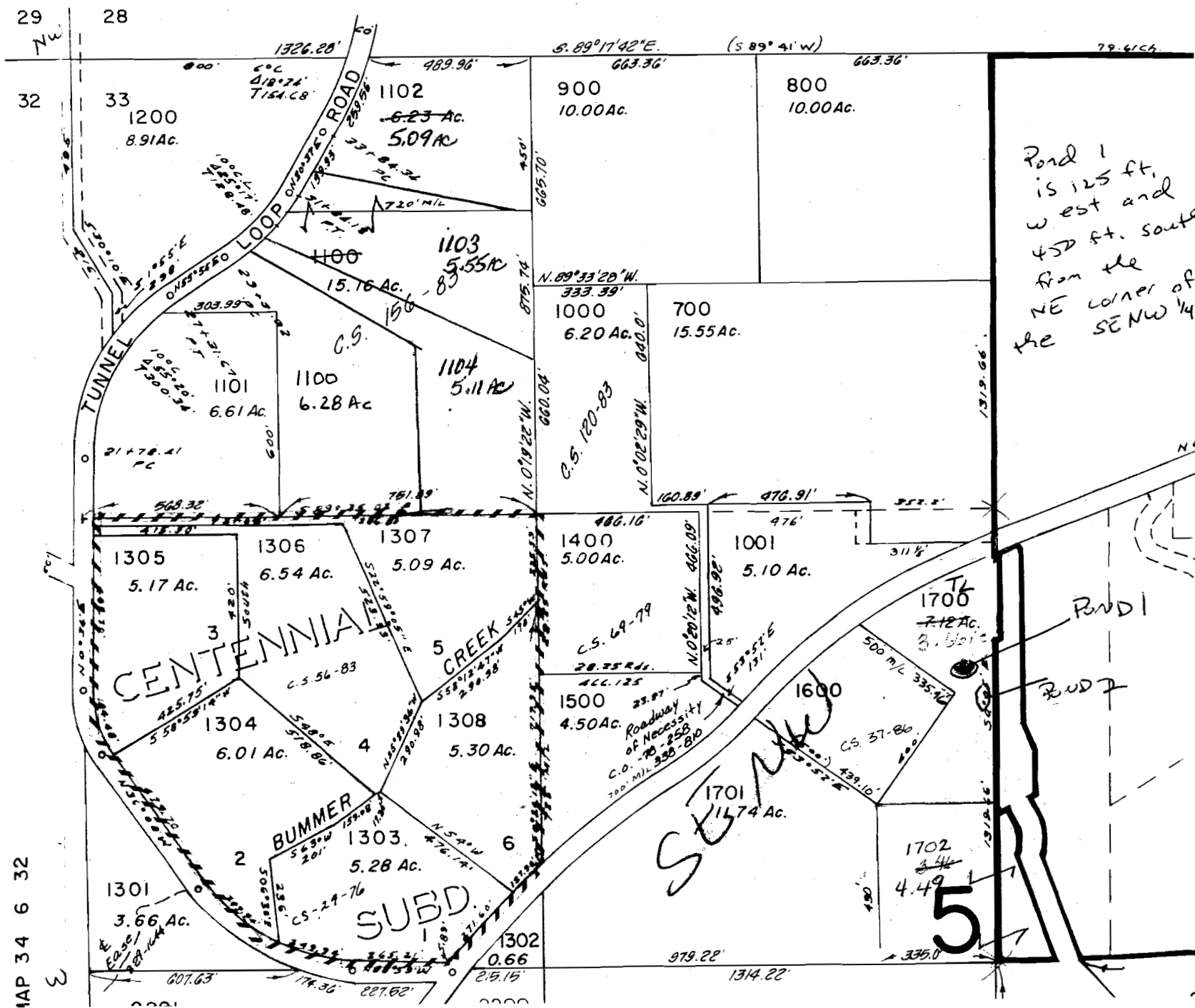
SECTION 33 T.34S. R.6W. W. 1
JOSEPHINE COUNTY

THE OLD POND #1
THE OLD POND #2

SCALE 1" = 400'

MAP FOR POND 1

SEE MAP 34 6 28



Pond 1
is 125 ft.
west and
450 ft. south
from the
NE corner of
the SE NW 1/4

N
↑

RECEIVED

AUG 25 2008

WATER RESOURCES DEPT
SALEM, OREGON

MAP 34 6 32