

RECEIVED

MAP FOR POND 2  
SEP 18 2008

WATER RESOURCES DEPT  
SALEM, OREGON

FOR POND 2

RECEIVED

AUG 25 2008

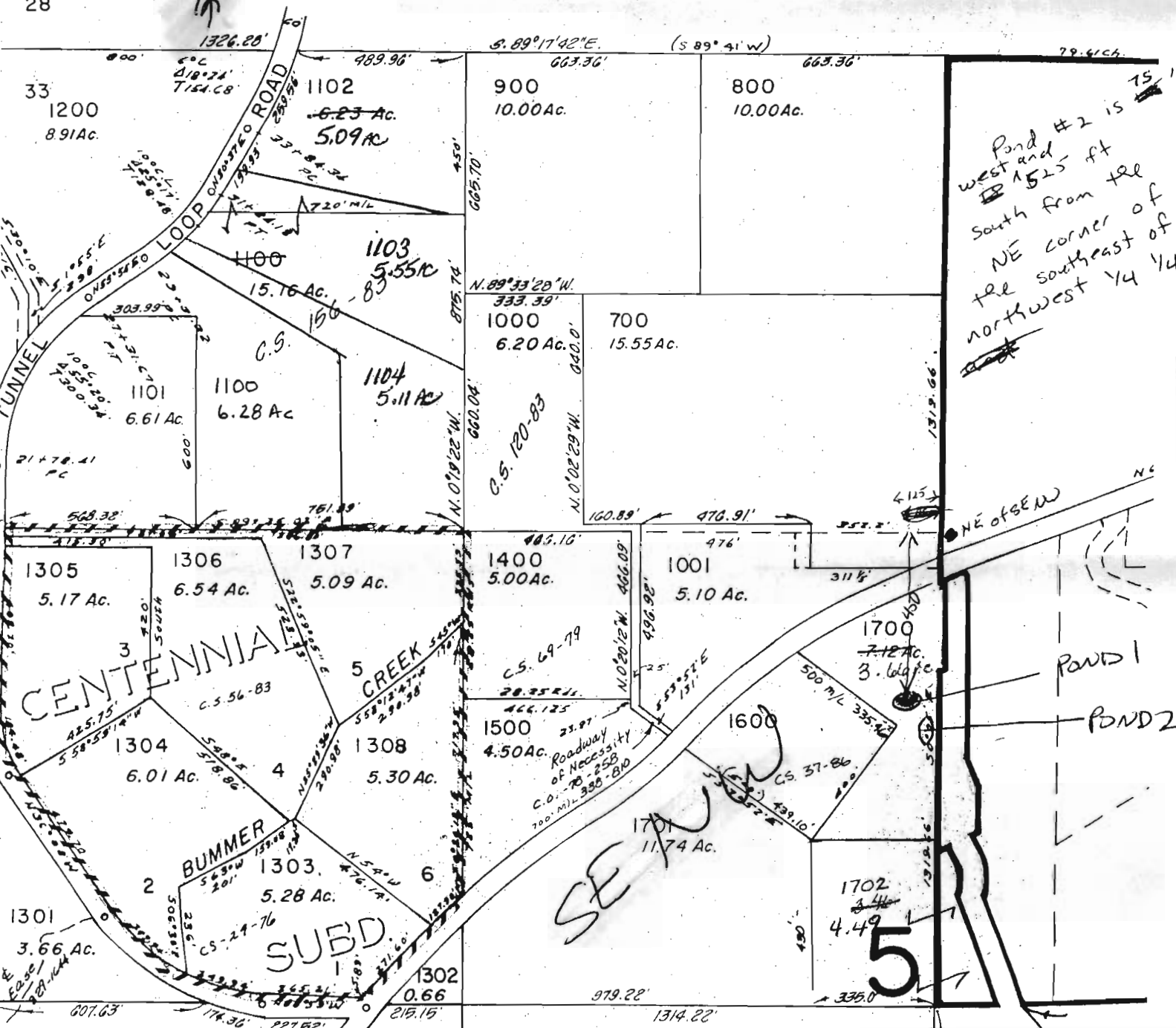
WATER RESOURCES DEPT  
SALEM, OREGON

SECTION 33 T.34S. R.6W. W. 1  
JOSEPHINE COUNTY

SCALE 1" = 400'

SEE MAP 34 6 28

28



Pond #2 is  
west and  
1525 ft  
south from the  
NE corner of  
the southeast of  
the northwest 1/4 1/4

SE 1/4

5