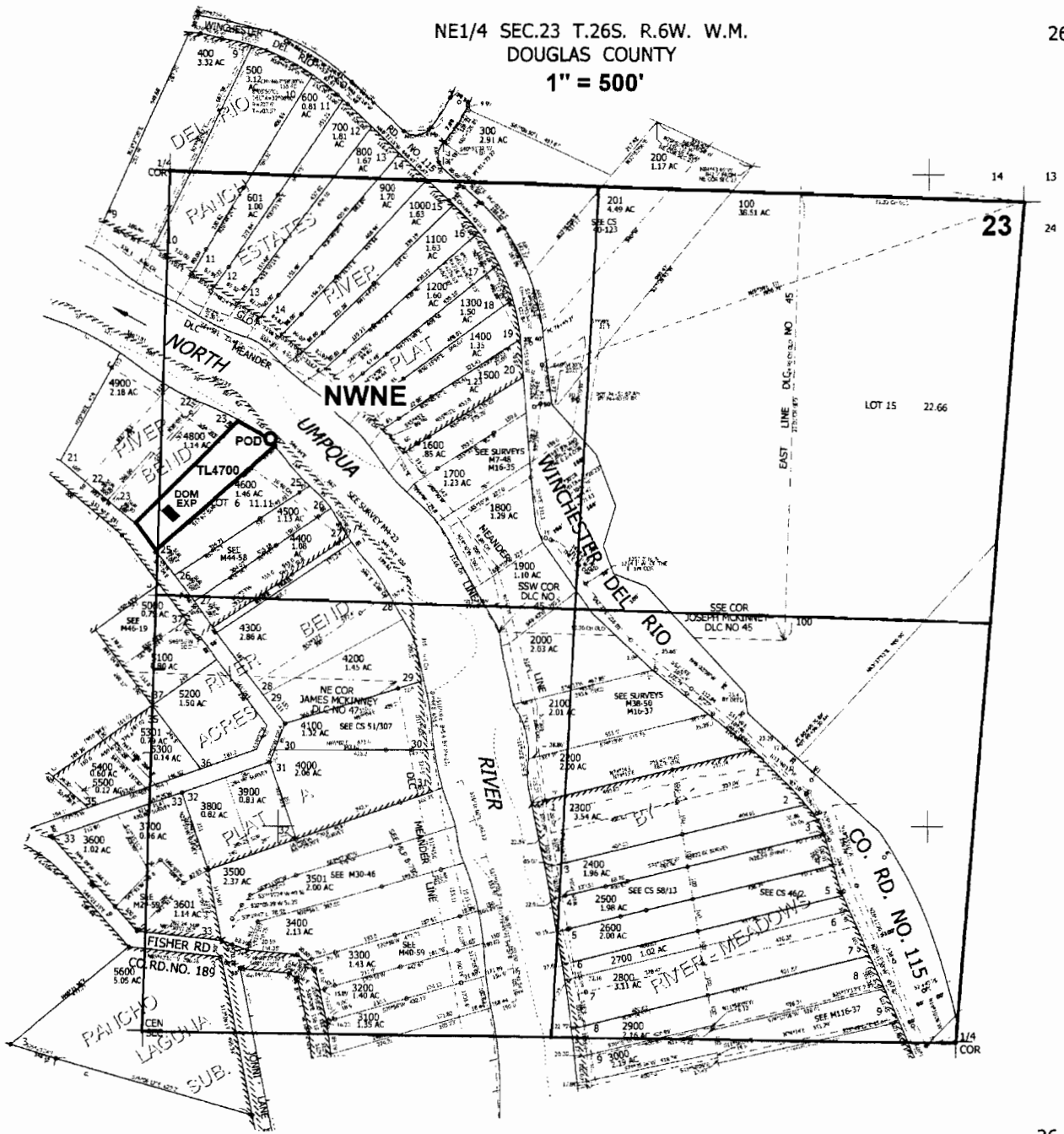


NE1/4 SEC.23 T.26S. R.6W. W.M.  
DOUGLAS COUNTY  
1" = 500'

26 6 23A



POD located 820 ft. S. and 330 ft. E. from N 1/4 corner of Section 23.

26 6 23A

**RECEIVED**  
SEP 22 2008  
WATER RESOURCES DEPT  
SALEM, OREGON