

211-712

211-712

612-712

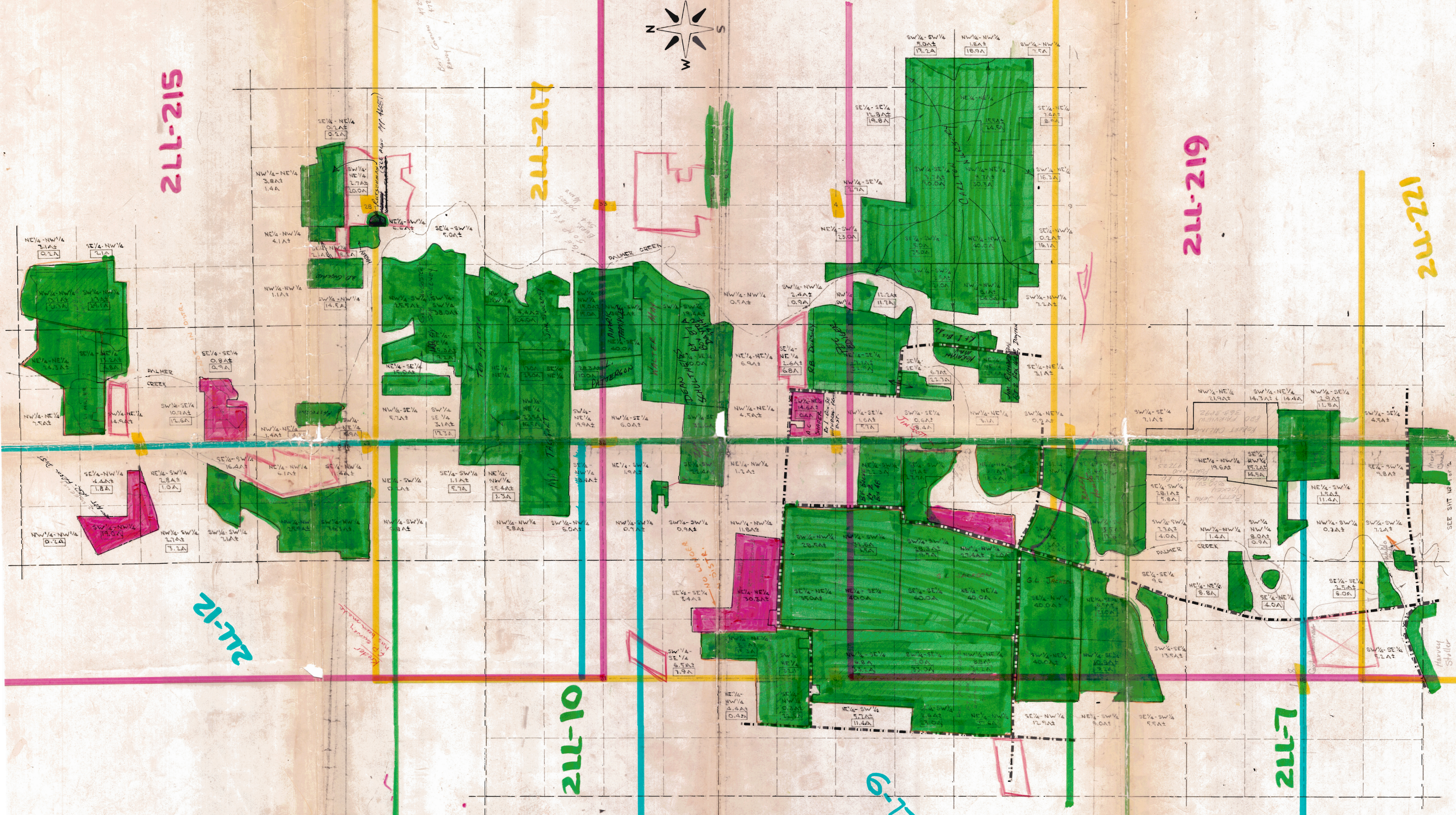
211-712

211-712


211-10

211-9-712

211-7



Section No. 43490  
Permit No. 32243

PALMER CREEK WATER DISTRICT IMPROVEMENT CO. DAYTON, OREGON	
PROJECT LOCATION MAP	
 <b>CLARK &amp; GROFF ENGINEERS INC.</b> ENGINEERING ARTS BUILDING 5574 Commercial, E. E SALEM, OREGON	SHEET 2
	O. 65081 DATE JUNE, 1967

DSGN. H. CF. DRWG. J. G. CHKD. H. F. SCALE 1" = 1000' DATE