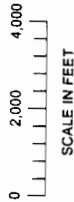


THIS MAP WAS PREPARED FOR ASSESSMENT PURPOSE ONLY

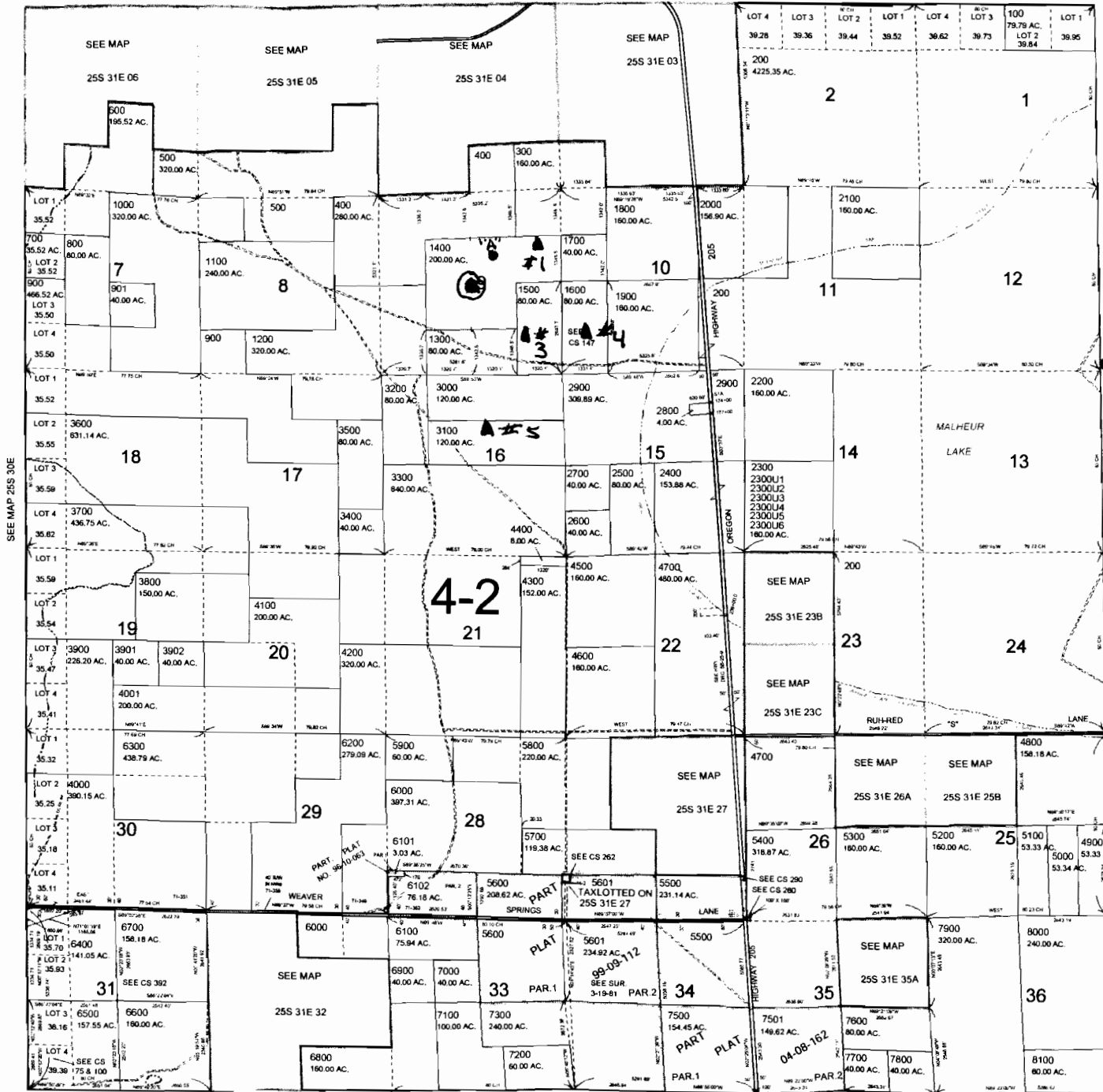
T.25S. R.31E. W.M.
HARNEY COUNTY
1" = 2000'

Clemens Properties

25S 31E
& INDEX



SEE MAP 24S 31E



CANCELLED MAPS
200M1
200M2
1200M1
2000M1
2100M0
2500M1
2600M1
2700M1
5200M1
5700M1
5900M1
6000M1
6600M1
7100M1
7200M1
7600M1
7600M2

RECEIVED

OCT 08 2008

WATER RESOURCES DEPT
SALEM, OREGON

- Property I own

▲ Existing wells

● Proposed well "A" to drill.

⊙ Existing well NOT IN USE "well problem"

LOCATION OF PROPOSED WELL #5 600' W OF THE NE 1/4 CORNER + 480' S OF THE N. LINE.

PRINTED ON Feb 28, 2006
25S 31E & INDEX