

22

APPROX. ADJUSTED  
CORRECTED SCALE  
1" = 1320 FEET

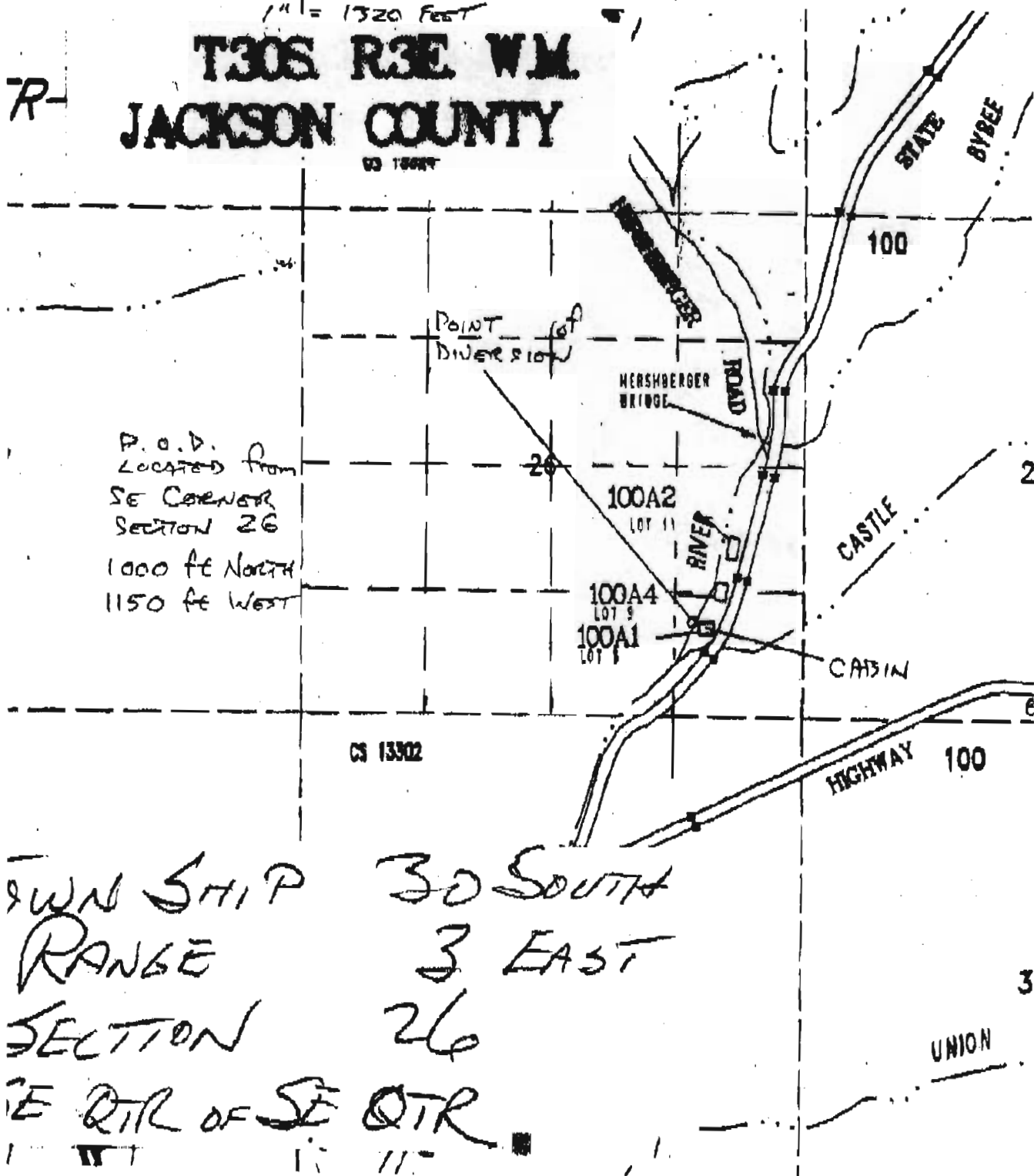
TAX LOT # 100 A1

R-

T30S R3E W.M.  
JACKSON COUNTY

63 T887

P.O.D.  
LOCATED FROM  
SE CORNER  
SECTION 26  
1000 FE NORTH  
1150 FE WEST



TOWN SHIP 30 SOUTH  
RANGE 3 EAST  
SECTION 26  
SE QTR OF SE QTR

OCT 16 2008

# OREGON WATER RESOURCES DEPARTMENT



State of Oregon  
Water Resources Department  
725 Summer St NE, Ste A  
Salem, OR 97301-1266  
Phone #: (503) 986-0900  
Fax#: (503) 986-0901  
[www.wrd.state.or.us](http://www.wrd.state.or.us)

## FAX TRANSMITTAL

FROM: R. GOEBEL FAX NUMBER: 541 878 2622

DATE: THE 10-16-2008 PAGES: \_\_\_\_\_, INCLUDING COVER SHEET

TO: HERTZ PHONE: (503) 986-0 304

COMMENTS: PLEASE REVIEW THE REVISED MAP. IF YOU  
CONCUR PLEASE INITIAL & DATE THE MAP AS YOU  
RETURN FAX MY DIRECTION.

THANK YOU  
Herb

### WATER RIGHTS

- Water Rights information
- Adjudications
- Hydroelectric
- Certifications / Final Proof
- Hearings / Contested Cases

FAX: (503) 986-0901

### TECHNICAL SERVICES

- Hydrographer
- Ground Water
- Information Services
- GIS/Mapping
- Dam Safety
- Enforcement
- Water Use Reporting

FAX: (503) 986-0902

### FIELD SERVICES

- Regional Liaisons
- Transfers
- Hydrographers

### NORTHWEST REGION

- District 16 Watermaster

### DIRECTOR'S OFFICE

- Water Resources Commission
- Legislation and Rules
- Public Information

### ADMINISTRATIVE SERVICES

- Fiscal / Accounting
- Human Resources / Personnel
- Water Development Loan Fund
- Support Services

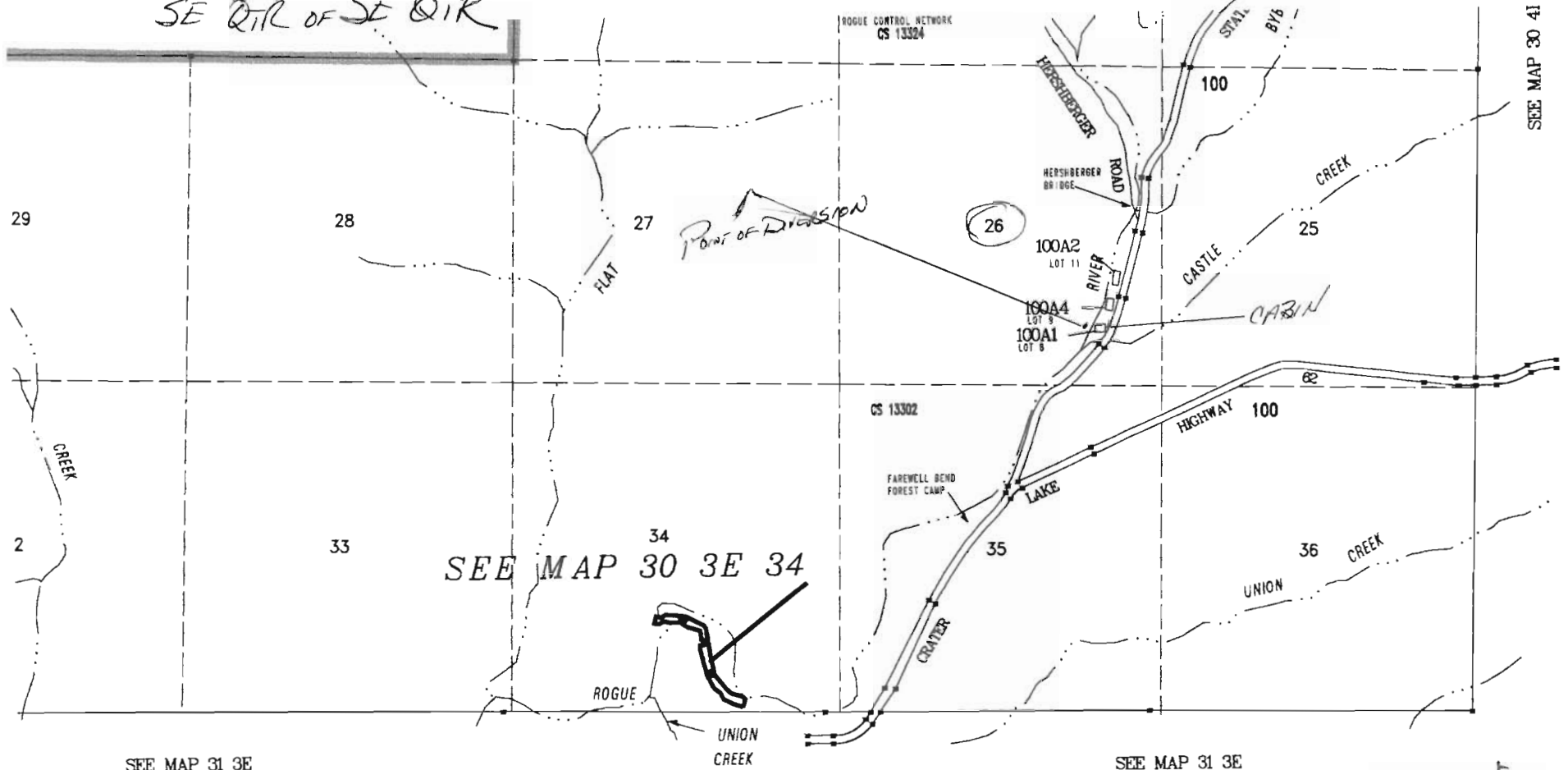
FAX: (503) 986-0903 or  
503.986-0904

THANK YOU

TOWN SHIP 30 SOUTH  
RANGE 3 EAST  
SECTION 26  
SE QTR OF SE QTR

TAX LOT # 100 A1

2" = 1 MILE Hwy 230



SEE MAP 31 3E

SEE MAP 31 3E 3

SEE MAP 31 3E

RECEIVED

JUL 15 2008

WATER RESOURCES DEPT  
SALEM, OREGON

