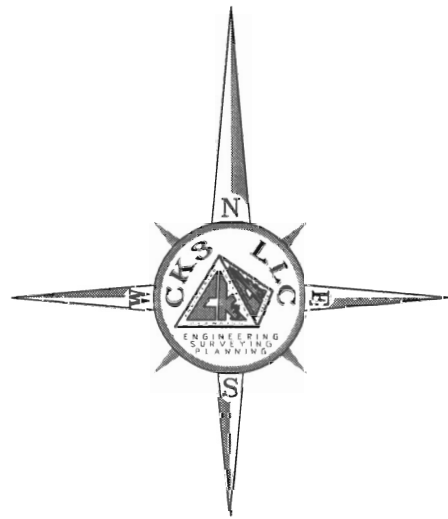


LEGEND	
DISCRPTION	SYMBOLS
SECTION LINE	—
QUARTER-QUARTER LINE	- - - - -
TAX LOT LINE	—
CONCRETE DITCH	— — — — —
CANAL	— — — — —
IRRIGATION PIPE	— IRR — IRR —
SECTION CORNER	36 31 1 6
IRRIGATION WELL	⊙
SUMP	⊙
PROPOSED PRIMARY WATER RIGHT AREA	▨



1/4 MILE (1320')      0      1/4 MILE (1320')      1/2 MILE (2640')

SCALE 1" = 1/4 MILE

ALL DISTANCES SHOWN HERE ARE IN FEET UNLESS NOTED OTHERWISE

RECEIVED

OCT 20 2008

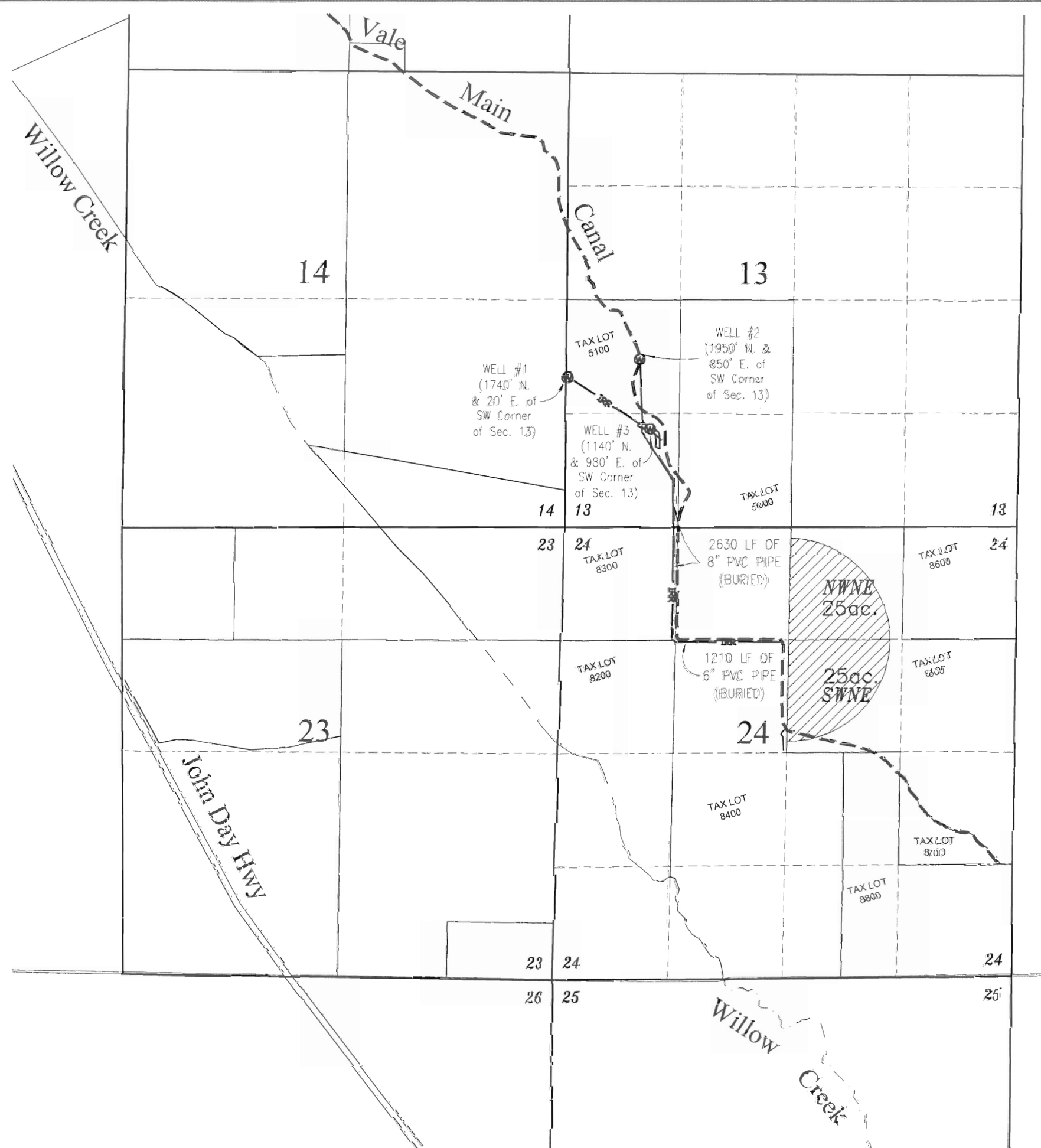
WATER RESOURCES DEPT  
SALEM, OREGON



Sealed 10/14/08

**DISCLAIMER**

I, STEWART R. EDWARDS, HEREBY CERTIFY: THAT THIS MAP WAS MADE TO BE PART OF THE APPLICATION FOR WATER RIGHTS. SECTIONAL LINES SHOWN ARE APPROXIMATE AND THIS MAP IS NOT INTENDED FOR ANY OTHER USE AND DOES NOT GUARANTEE LAND OWNERSHIP.



ENG. BY:	STU EDWARDS
APR. BY:	PW
DWG. BY:	
DATE:	10/07/08

#	REVISION	DATE
1		
2		
3		
4		

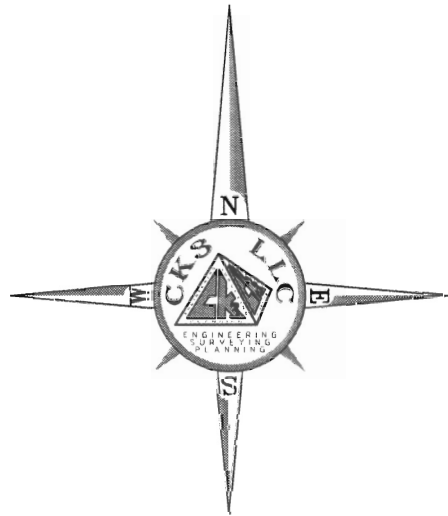
APPLICATION MAP  
T 16S, R 43E,  
SEC. 24, W.M.  
MALHEUR COUNTY, OREGON  
AARON ARRIOLA  
2445 12 AVE. EAST  
VALE, OREGON 97918

**CKS, LLC**  
368 S.W. 5th Avenue  
Ontario, Oregon 97914  
Phn: (541) 889-5411  
Fax: (541) 889-2074  
**CIVIL-STRUCTURAL-ELECTRICAL  
ENGINEERING, SURVEYING & PLANNING**

**WR-1**  
SHEET: 1 OF 1  
JOB: CO-08021

THIS DRAWING, & ALL INFORMATION HEREIN, REMAIN THE PROPERTY OF CKS, LLC. ALL RIGHTS ARE EXPRESSLY RESERVED & IT MAY NOT BE REPRODUCED IN WHOLE OR IN PART WITHOUT THE EXPRESSED WRITTEN CONSENT OF CKS, LLC.

LEGEND	
DISCRIPTION	SYMBOLS
SECTION LINE	— — — — —
QUARTER-QUARTER LINE	- - - - -
TAX LOT LINE	— — — — —
CONCRETE DITCH	— — — — —
CANAL	== == == == ==
IRRIGATION PIPE	— — — — —
SECTION CORNER	36 31 1 8
IRRIGATION WELL	⊙
SUMP	⊕
PROPOSED PRIMARY WATER RIGHT AREA	▨



1/4 MILE (1320') 0 1/4 MILE (1320') 1/2 MILE (2640')

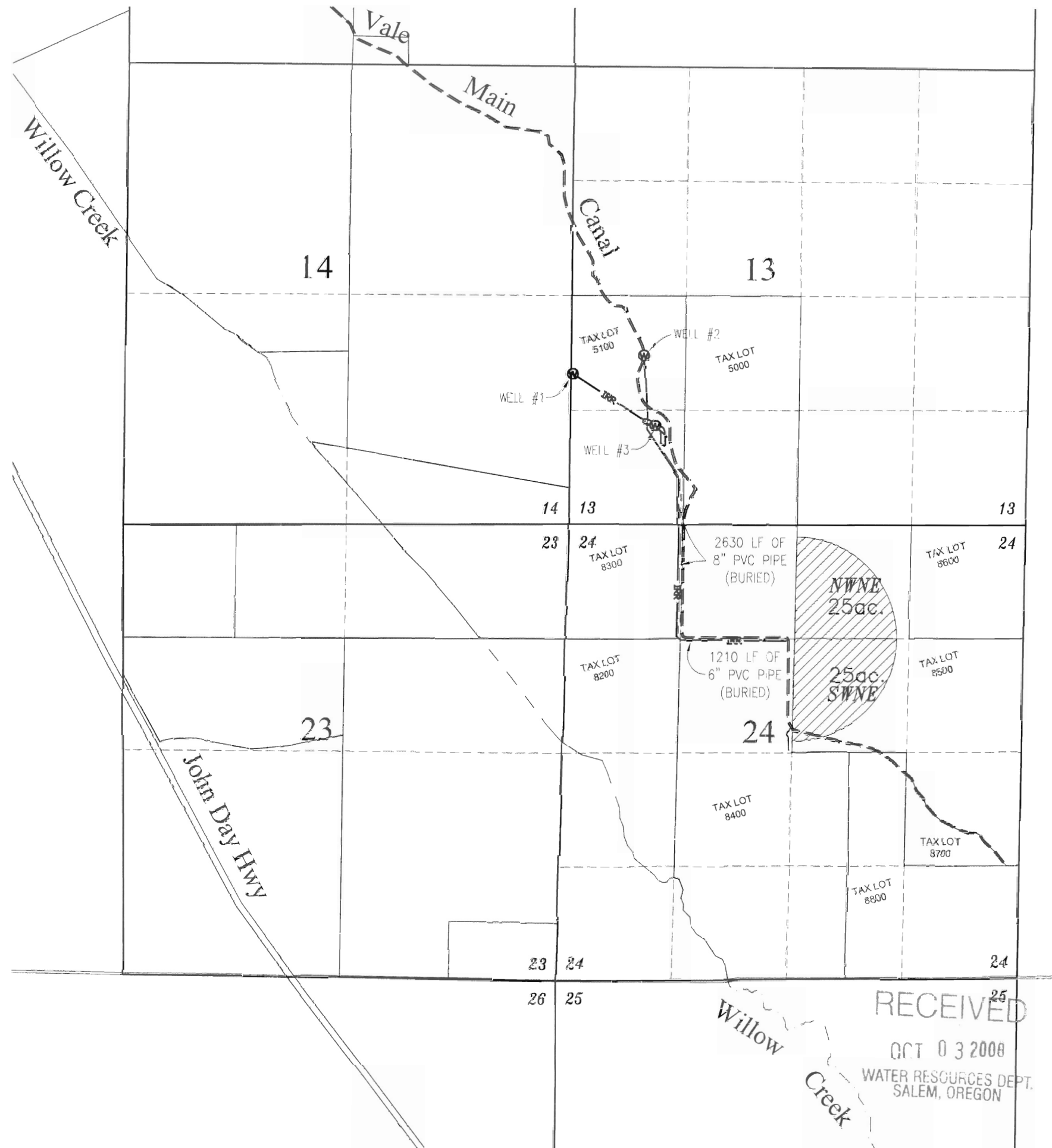
SCALE 1" = 1/4 MILE  
ALL DISTANCES SHOWN HERE ARE IN FEET UNLESS NOTED OTHERWISE



9/30/08

**DISCLAIMER**

I, STEWART R. EDWARDS, HEREBY CERTIFY: THAT THIS MAP WAS MADE TO BE PART OF THE APPLICATION FOR WATER RIGHTS. SECTIONAL LINES SHOWN ARE APPROXIMATE AND THIS MAP IS NOT INTENDED FOR ANY OTHER USE AND DOES NOT GUARANTEE LAND OWNERSHIP.



ENG. BY:	STU EDWARDS
APR. BY:	PW
DWG. BY:	
DATE:	9/22/08

#	REVISION	DATE
1		
2		
3		
4		

APPLICATION MAP  
T 16S, R 43E,  
SEC. 24, W.M.  
MALHEUR COUNTY, OREGON

AARON ARRIOLA  
2445 12 AVE. EAST  
VALE, OREGON 97918

**CKS, LLC**  
368 S.W. 5th Avenue  
Ontario, Oregon 97914  
Phn: (541) 889-5411  
Fax: (541) 889-2074

**CIVIL-STRUCTURAL-ELECTRICAL  
ENGINEERING, SURVEYING & PLANNING**

**WR-1**

SHEET: 1 OF 1

JOB: CO-08021

THIS DRAWING, & ALL INFORMATION HEREIN, REMAIN THE PROPERTY OF CKS, LLC. ALL RIGHTS ARE EXPRESSLY RESERVED & IT MAY NOT BE REPRODUCED IN WHOLE OR IN PART WITHOUT THE EXPRESSED WRITTEN CONSENT OF CKS, LLC.

RECEIVED  
OCT 03 2008  
WATER RESOURCES DEPT.  
SALEM, OREGON