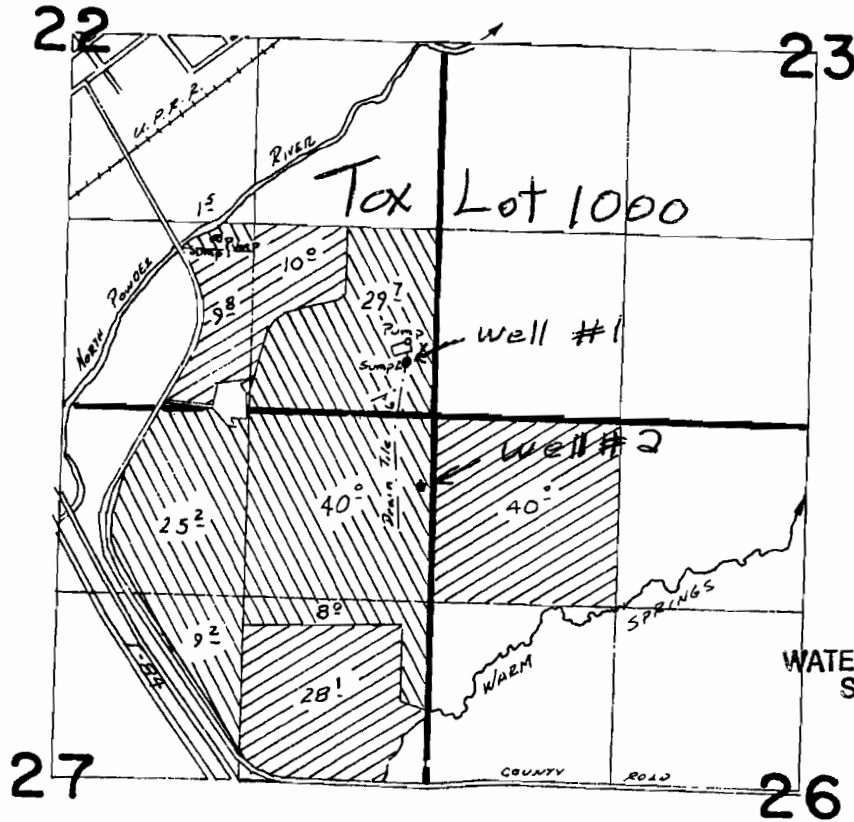


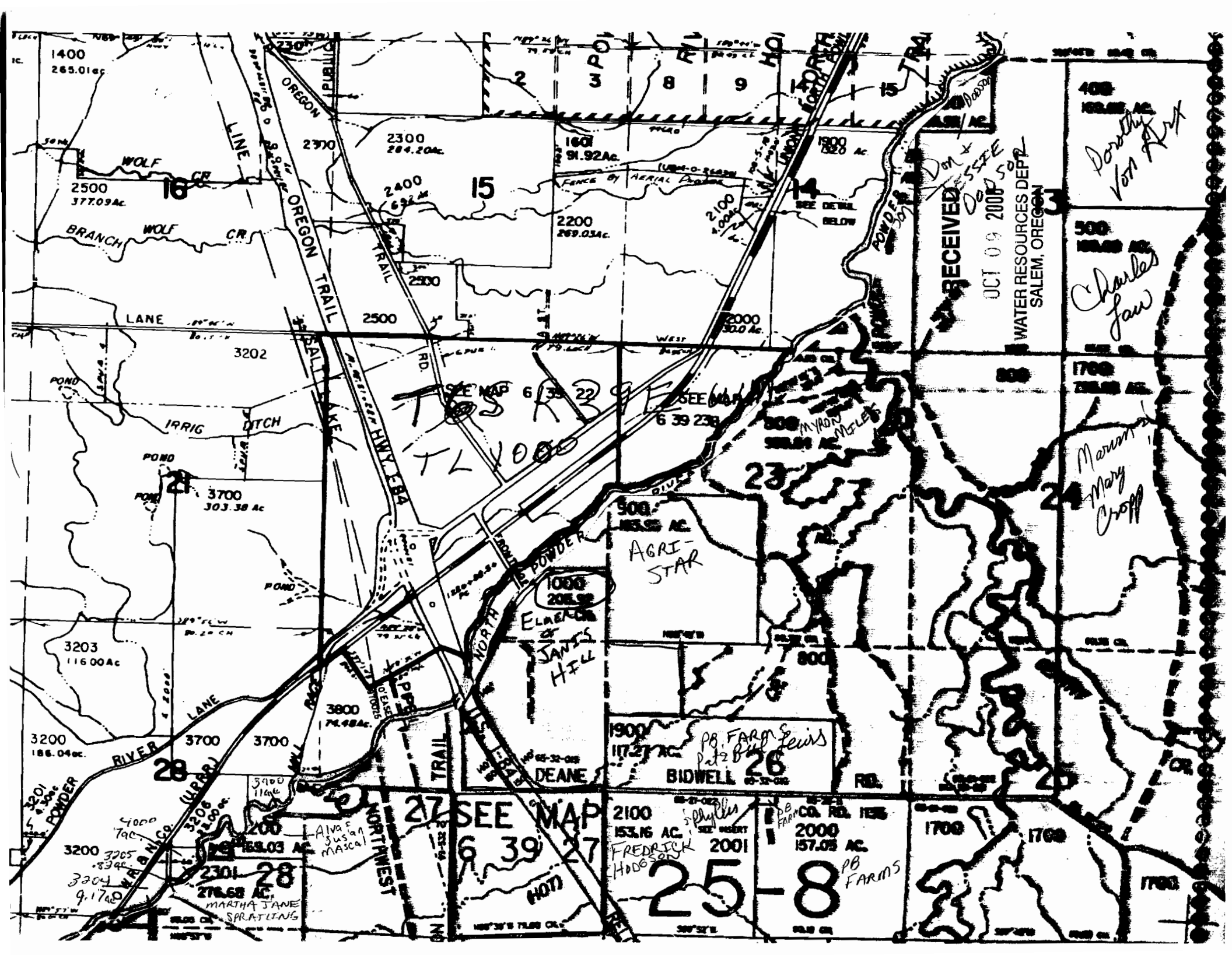
T. 6S., R. 39E., W.M.



Wells #1 & #2 to be
 Supplemental on all ground.
 Well #1 located: 200'w & 350'N from
 SE corner Sec 22 - SESE Sec-22
 Well #2 located: 100'w & 450'S from
 SE corner Sec 22 being within NENE
 Sec 27 - all within TL 1000 W.M.

.....ELMER.....HILL.....

Ground Water
 application map.



1400
285.01ac

2500
377.09ac

3202

3700
303.38 ac

3203
116.00ac

3200
188.04ac

3200
188.04ac

3200
188.04ac

WOLF CR

BRANCH WOLF CR

LANE

IRRIG DITCH

RIVER LANE

WAB N CO (W.P.R.)

MARTHA JANE SPRATLING

18

3202

28

28

28

28

2300
284.20ac

2400
69.2 ac

2500

3700
303.38 ac

3800
74.98ac

3900
116 ac

2301
278.68 ac

2301
278.68 ac

2301
278.68 ac

2300
284.20ac

2400
69.2 ac

2500

3700
303.38 ac

3800
74.98ac

3900
116 ac

2301
278.68 ac

2301
278.68 ac

2301
278.68 ac

2300
284.20ac

2400
69.2 ac

2500

3700
303.38 ac

3800
74.98ac

3900
116 ac

2301
278.68 ac

2301
278.68 ac

2301
278.68 ac

2300
284.20ac

2400
69.2 ac

2500

3700
303.38 ac

3800
74.98ac

3900
116 ac

2301
278.68 ac

2301
278.68 ac

2301
278.68 ac

2300
284.20ac

2400
69.2 ac

2500

3700
303.38 ac

3800
74.98ac

3900
116 ac

2301
278.68 ac

2301
278.68 ac

2301
278.68 ac

2300
284.20ac

2400
69.2 ac

2500

3700
303.38 ac

3800
74.98ac

3900
116 ac

2301
278.68 ac

2301
278.68 ac

2301
278.68 ac

2300
284.20ac

2400
69.2 ac

2500

3700
303.38 ac

3800
74.98ac

3900
116 ac

2301
278.68 ac

2301
278.68 ac

2301
278.68 ac

2300
284.20ac

2400
69.2 ac

2500

3700
303.38 ac

3800
74.98ac

3900
116 ac

2301
278.68 ac

2301
278.68 ac

2301
278.68 ac

2300
284.20ac

2400
69.2 ac

2500

3700
303.38 ac

3800
74.98ac

3900
116 ac

2301
278.68 ac

2301
278.68 ac

2301
278.68 ac

2300
284.20ac

2400
69.2 ac

2500

3700
303.38 ac

3800
74.98ac

3900
116 ac

2301
278.68 ac

2301
278.68 ac

2301
278.68 ac

2300
284.20ac

2400
69.2 ac

2500

3700
303.38 ac

3800
74.98ac

3900
116 ac

2301
278.68 ac

2301
278.68 ac

2301
278.68 ac

2300
284.20ac

2400
69.2 ac

2500

3700
303.38 ac

3800
74.98ac

3900
116 ac

2301
278.68 ac

2301
278.68 ac

2301
278.68 ac

2300
284.20ac

2400
69.2 ac

2500

3700
303.38 ac

3800
74.98ac

3900
116 ac

2301
278.68 ac

2301
278.68 ac

2301
278.68 ac

2300
284.20ac

2400
69.2 ac

2500

3700
303.38 ac

3800
74.98ac

3900
116 ac

2301
278.68 ac

2301
278.68 ac

2301
278.68 ac

2300
284.20ac

2400
69.2 ac

2500

3700
303.38 ac

3800
74.98ac

3900
116 ac

2301
278.68 ac

2301
278.68 ac

2301
278.68 ac

RECEIVED
OCT 09 2008
WATER RESOURCES DEPT
SALEM, OREGON

SEE MAP 6 39 23
T 2400

1000
208.98
ELMER
JAMES HILL

500
155.56 AC
AGRI STAR

1900
117.27 AC
DEANE

2100
153.16 AC
FREDRICK
HODGSON

PB FARMS
Part 2 Bud Lewis
BIDWELL

2000
157.05 AC
PB FARMS

Dorothy
Von Hart

Charles
Law

Mary
Croff

25-8