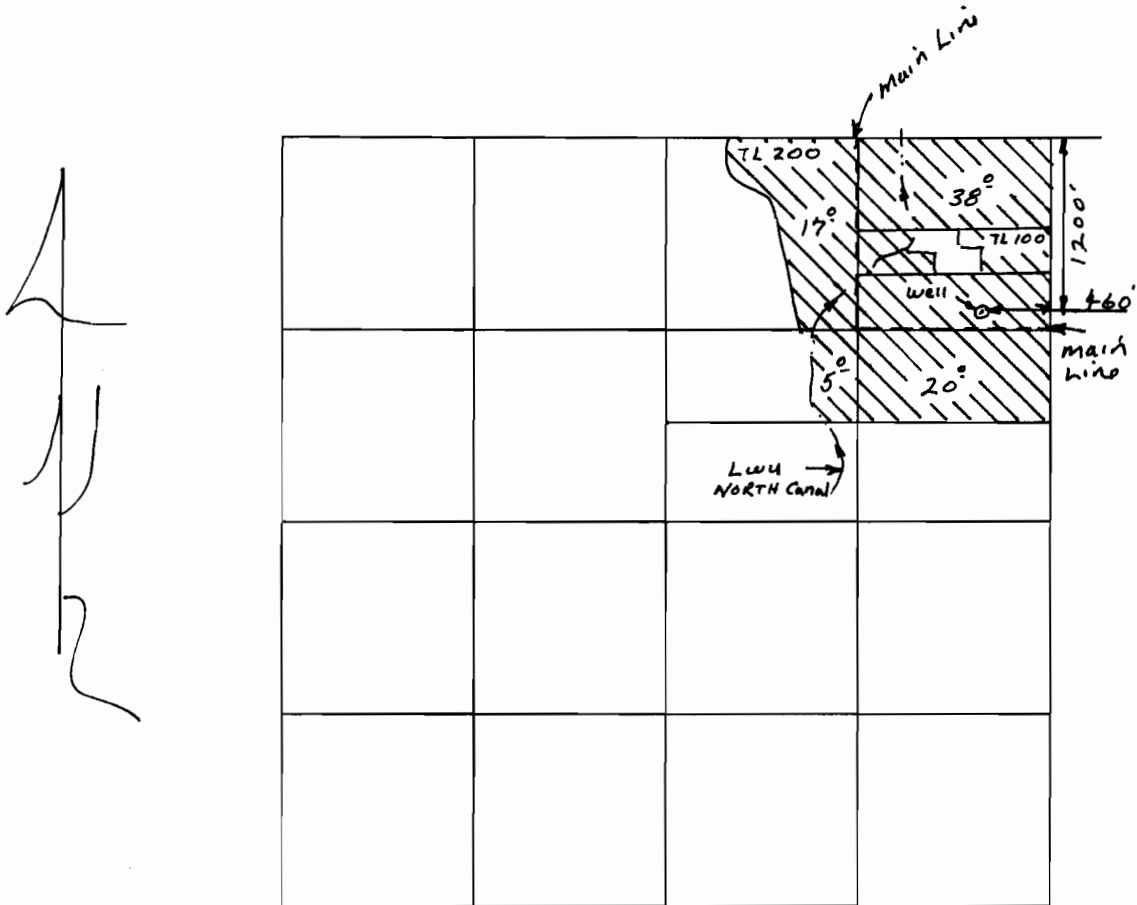


T 39 S, R 19 E, WM SECTION 15



Well Located 1200' S ; 460' W from the NE' Corner
SEC 15.

SCALE 1" = 1320'

RECEIVED

OCT 17 2008

WATER RESOURCES DEPT
SALEM, OREGON

THIS MAP WAS PREPARED FOR ASSESSMENT PURPOSE ONLY.

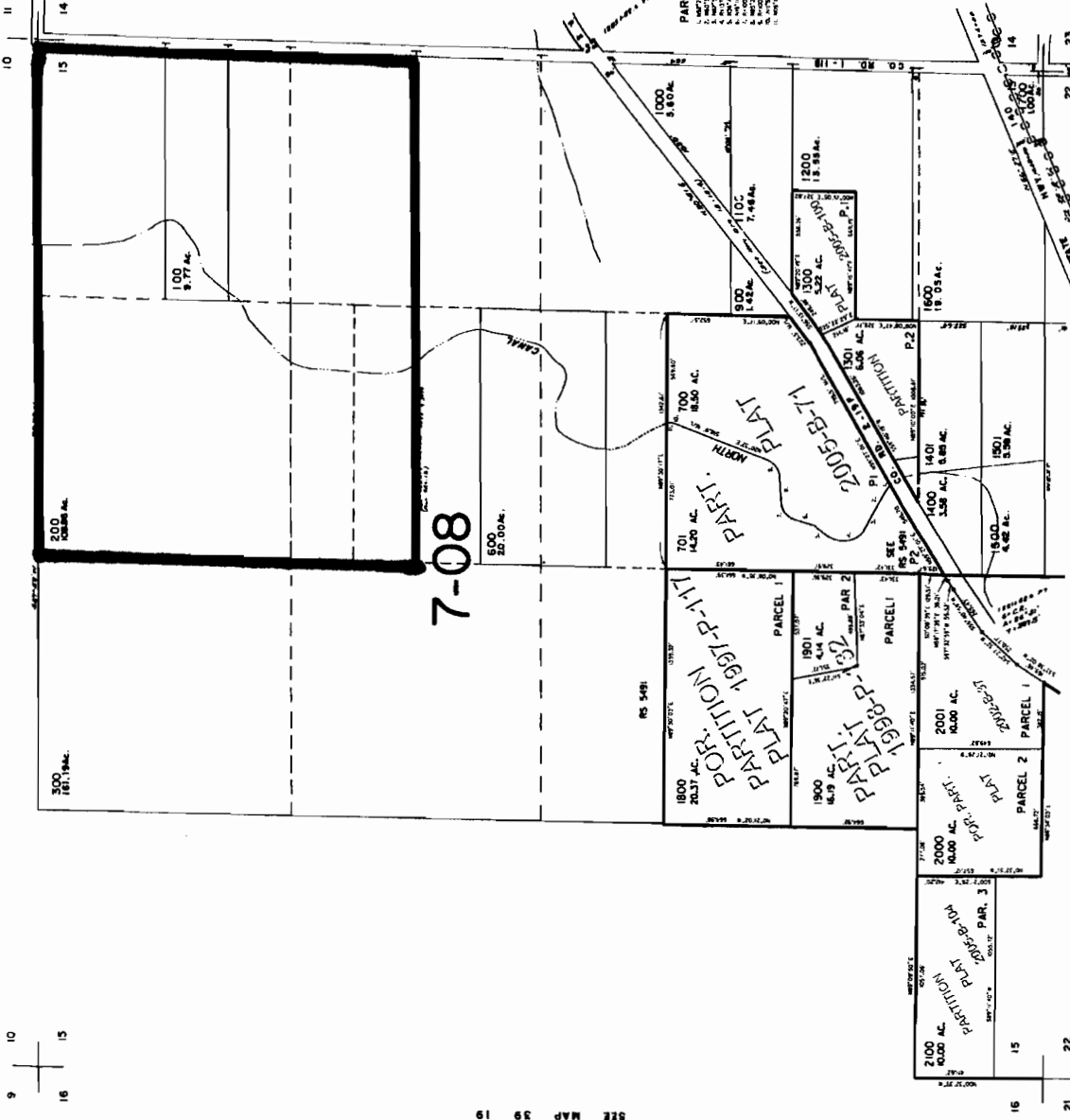
SEC. 15 T.39S. R.19E. W.M. LAKE COUNTY OR 4000'

39 19 15



SEE MAP 39 19

CANCELLED NO. 400 500 800



SEE MAP 39 19 14

PARCEL 700
1. WATER 1/2 AC.
2. WOODS 1/2 AC.
3. MEADOW 1/2 AC.
4. BARN 1/2 AC.
5. FENCE 1/2 AC.
6. ROAD 1/2 AC.
7. OTHER 1/2 AC.
8. TOTAL 1.5 AC.

7-08

SEE MAP 39 19

RECEIVED

OCT 17 2008

WATER RESOURCES DEPT
SALEM, OREGON

Revised 5/22/2006, DLW
39 19 15

7-13

SEE MAP 39 19 22

SEE MAP 39 19 22