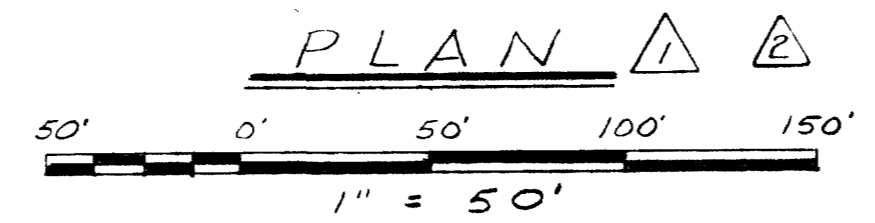
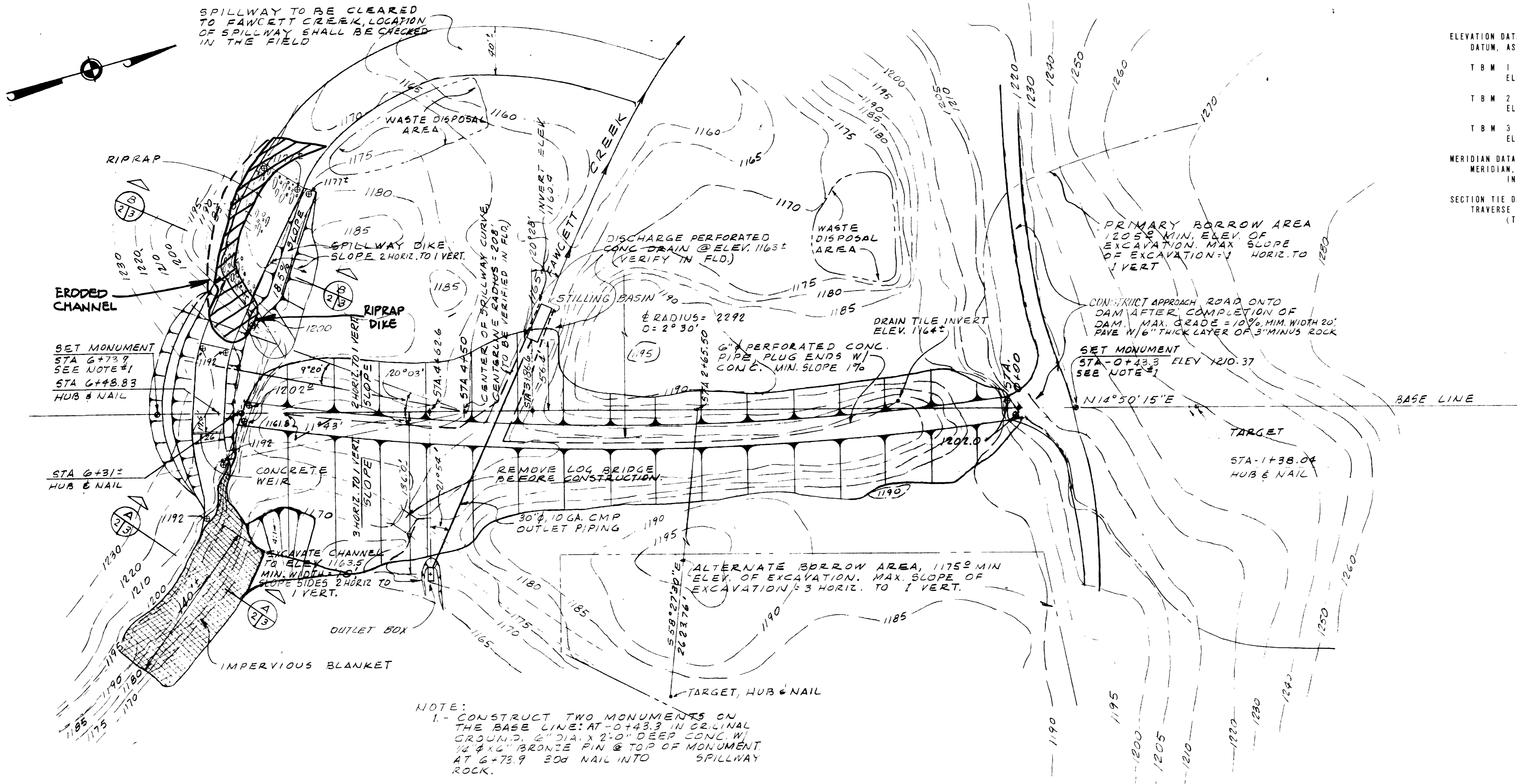
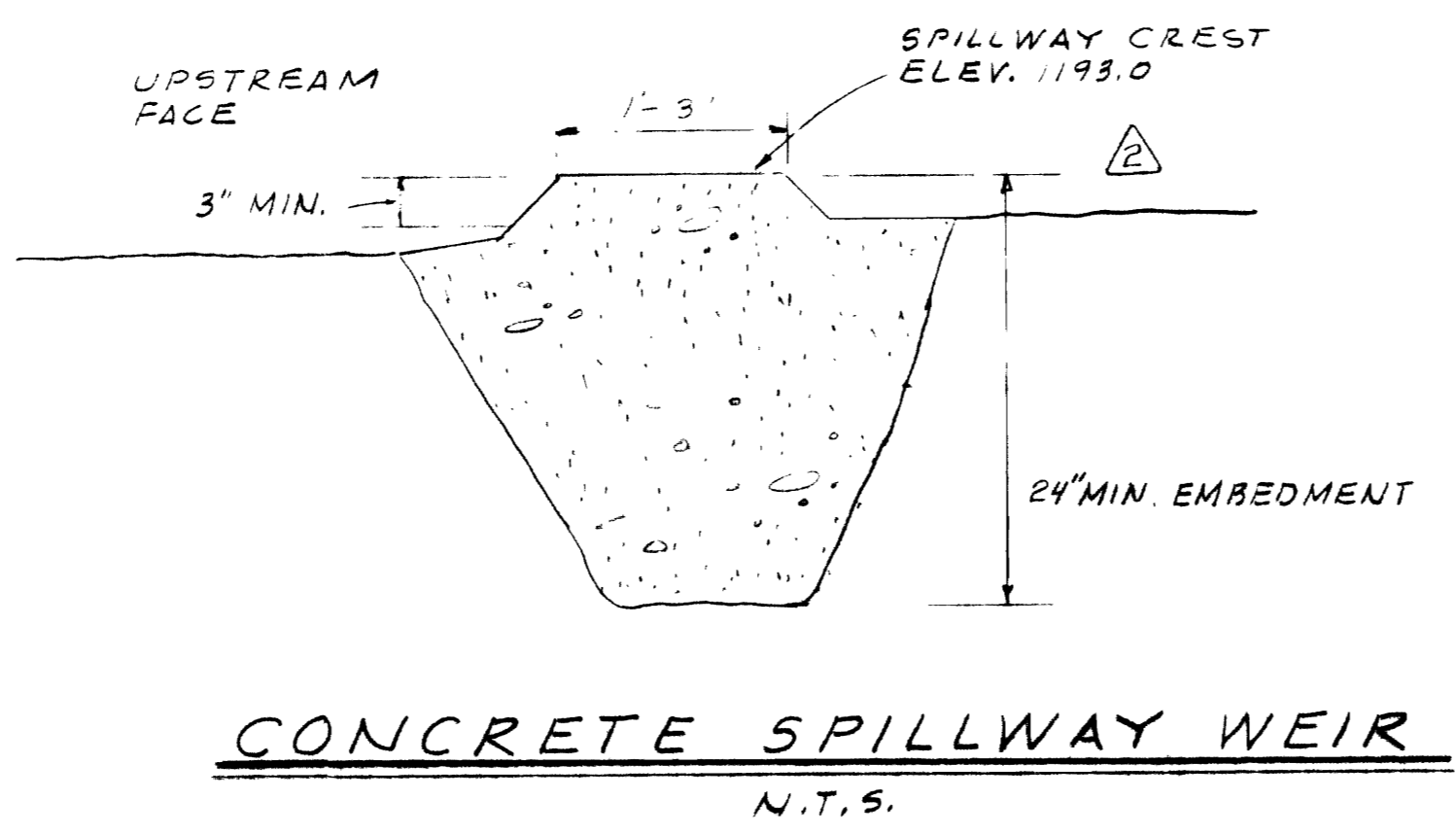
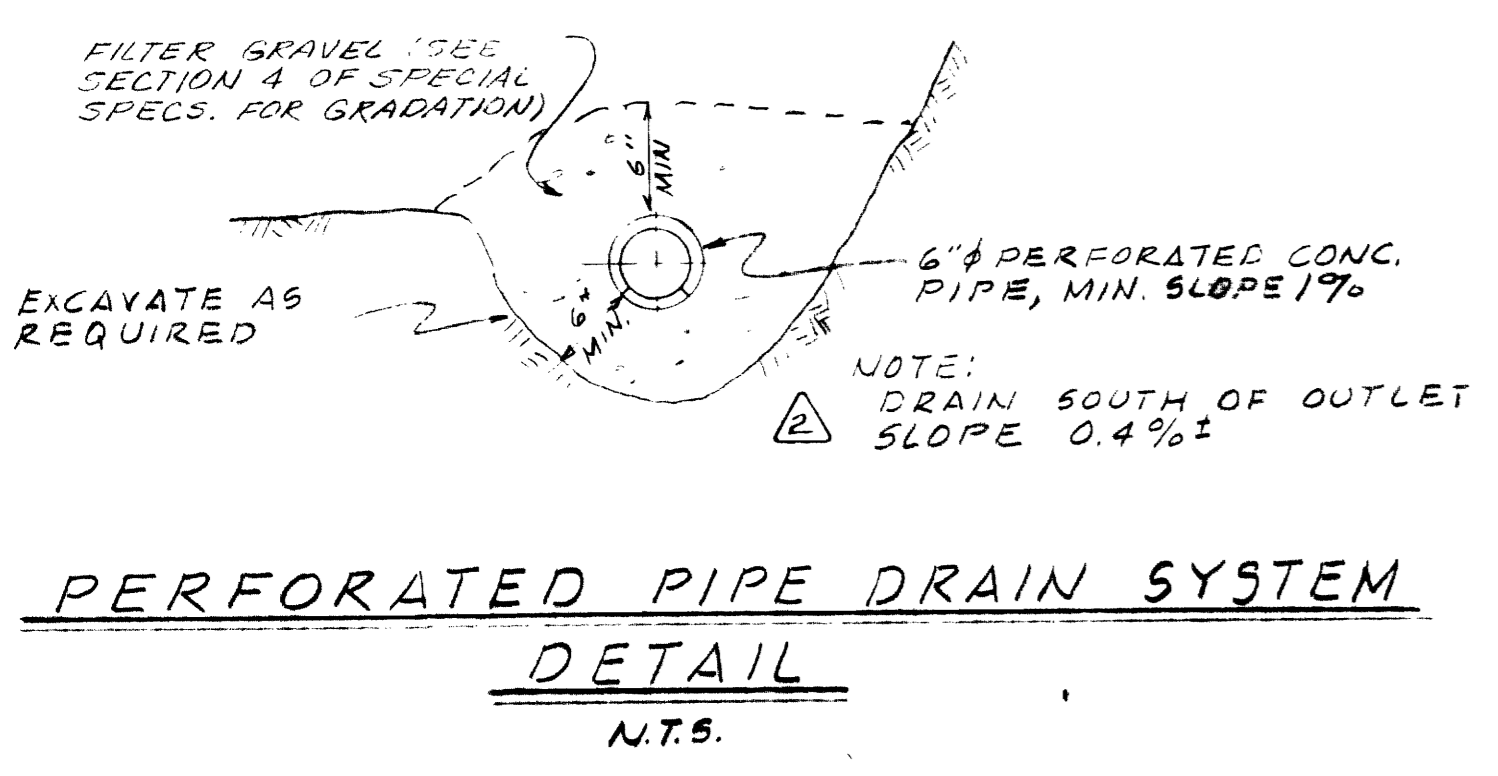


ELEVATION DATA:
 DATUM, ASSUMED FROM USC & GS QUAD SHEET.
 T B M 1 SPIKE, W. SIDE 72" STUMP, 150' LEFT OF STA. 6 + 00 . . .
 ELEV. 1179.18
 T B M 2 SPIKE, E. SIDE 60" STUMP, 80' RIGHT OF STA. 0 + 64 . . .
 ELEV. 1191.71.
 T B M 3 NAIL, N. SIDE HEMLOCK STUMP 1235' FROM STA. 2 + 62.50 . . .
 ELEV. 1177.03, S. 58° 27' 30" E.
 MERIDIAN DATA:
 MERIDIAN, TRUE FROM OREGON STATE FORESTRY BOARD SOLAR OBSERVATION
 IN AREA TO SOUTHWEST.
 SECTION TIE DATA:
 TRAVERSE TIE (TRANSIT AND CHAIN) FROM S.E. CORNER SECTION 19
 (T2S. R8W. WM.) TO STA. 2 + 62.50 N 2365.52
 W 2375.13

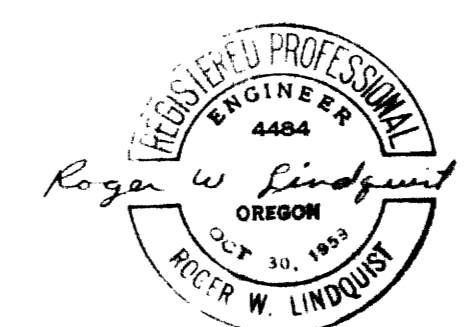
BY JOHN CARLICH REG. ORE. L.S.
 MAY 9, 1952

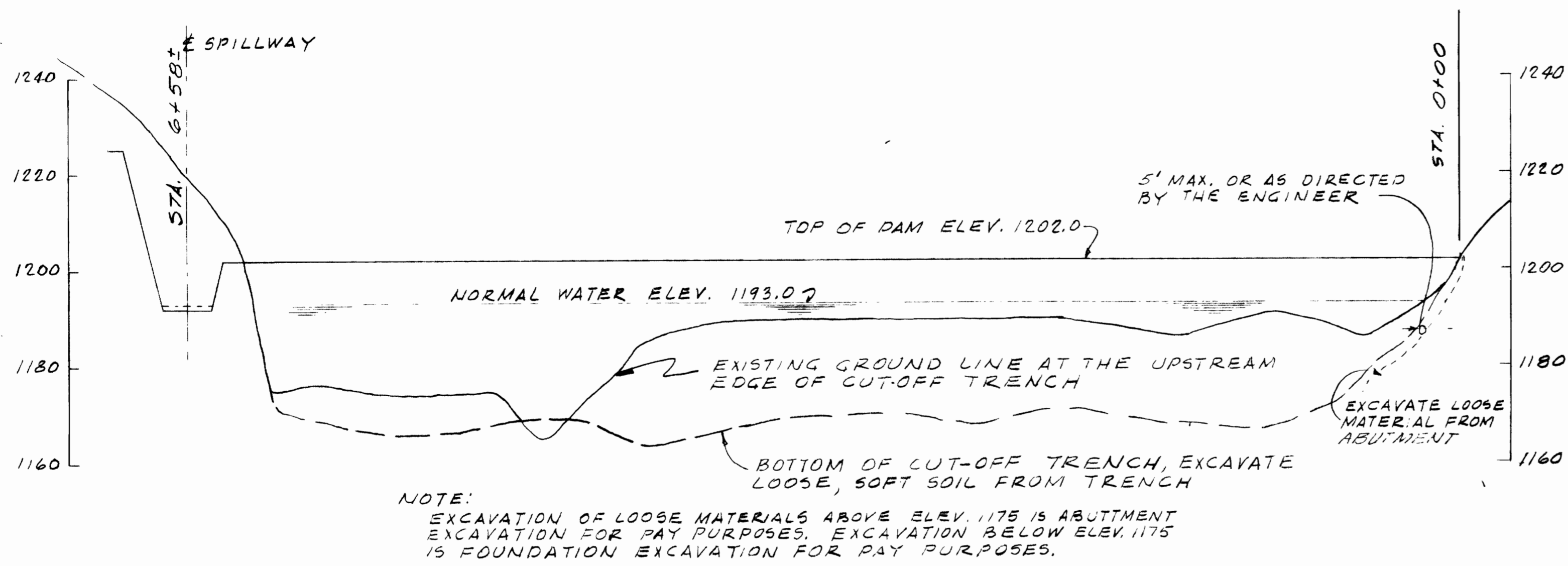


BASE LINE STATION	OFFSET TO CENTER LINE OF DAM
0 + 25	3.4
0 + 50	6.4
0 + 64	8.0
1 + 00	11.7
1 + 50	15.9
2 + 00	19.0
2 + 50	20.9
3 + 00	21.8
3 + 50	21.5
3 + 90	20.6
4 + 25	19.2
4 + 50	17.8
5 + 00	14.3
5 + 50	9.7
6 + 00	4.0
6 + 12	2.7



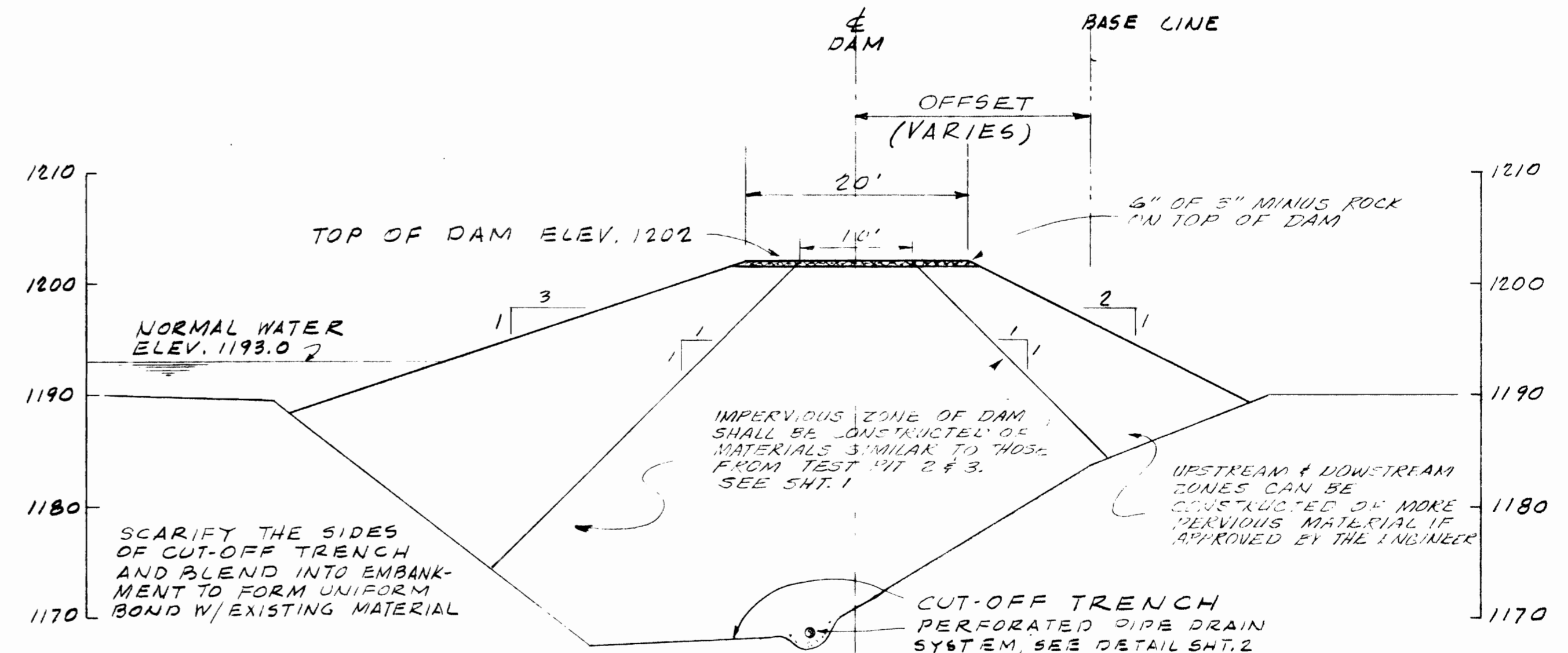
NO.	DATE	REVISION	BY	CHK	APP
1	JAN. 14 '72	REPAIRS TO SPILLWAY			
2	NOV. 15 '65	AS BUILT	JMC	RWL	RWL
3	MAR. 26 '65	ADDENDUM NO. 1	FNT	RWL	RWL
DES SHEET					
CITY OF TILLAMOOK, OREGON WATER COMMISSION SKOOKUM LAKE DAM GENERAL PLAN					
CORNELL, HOWLAND, HAYES & MERRYFIELD ENGINEERS & PLANNERS SEATTLE PORTLAND BOISE COVALLIS					
DATE FEB. 1968 SCALE AS SHOWN DWG C 3398-1					





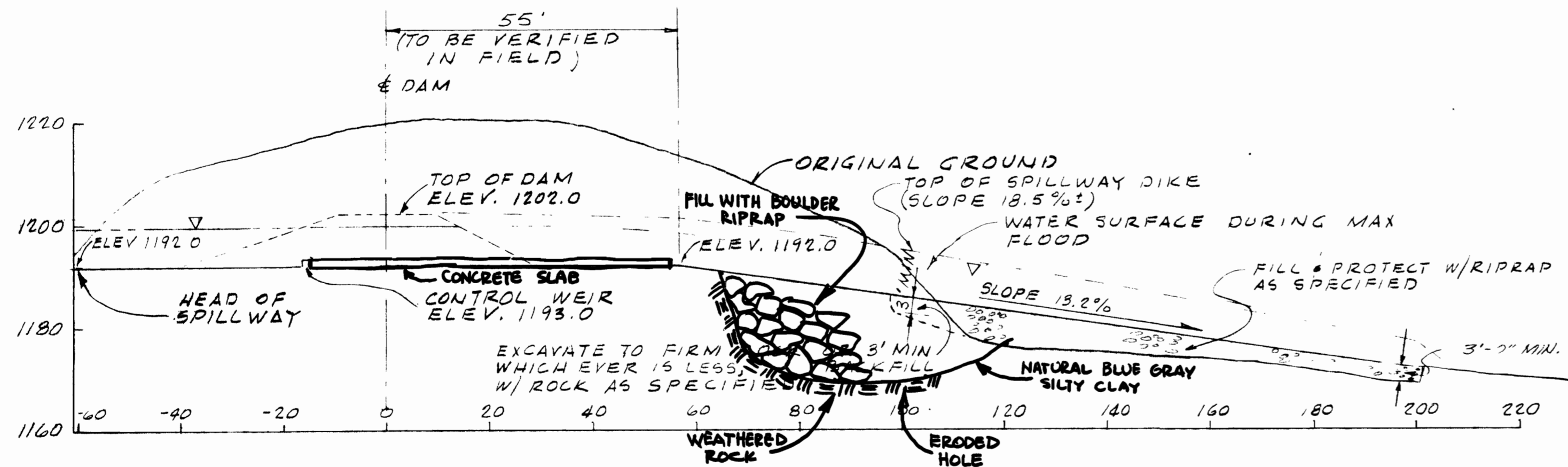
CENTERLINE PROFILE OF DAM

SCALE: 1" = 50' HORIZ.; 1" = 20' VERT.



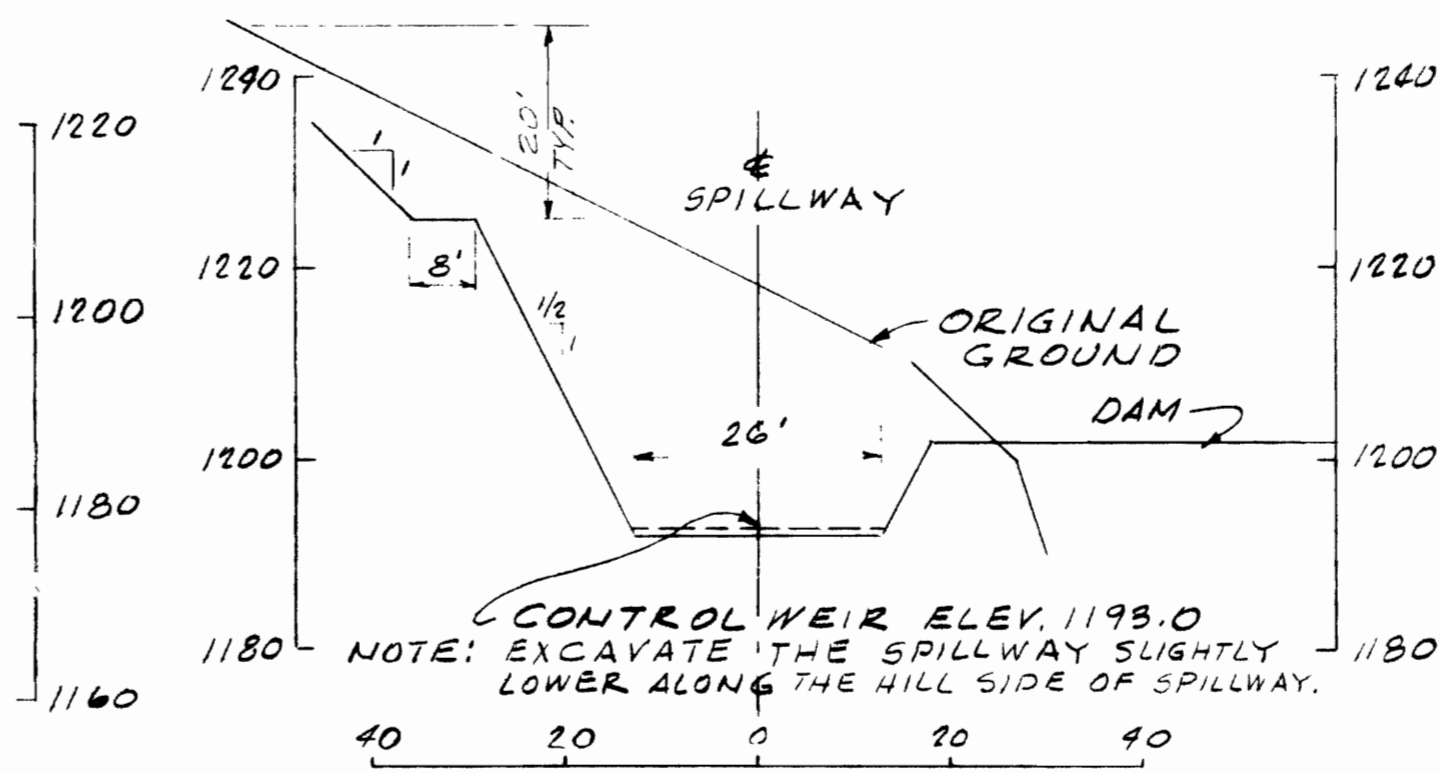
TYPICAL SECTION THROUGH DAM

SCALE: 1" = 10' HORIZ. & VERT.



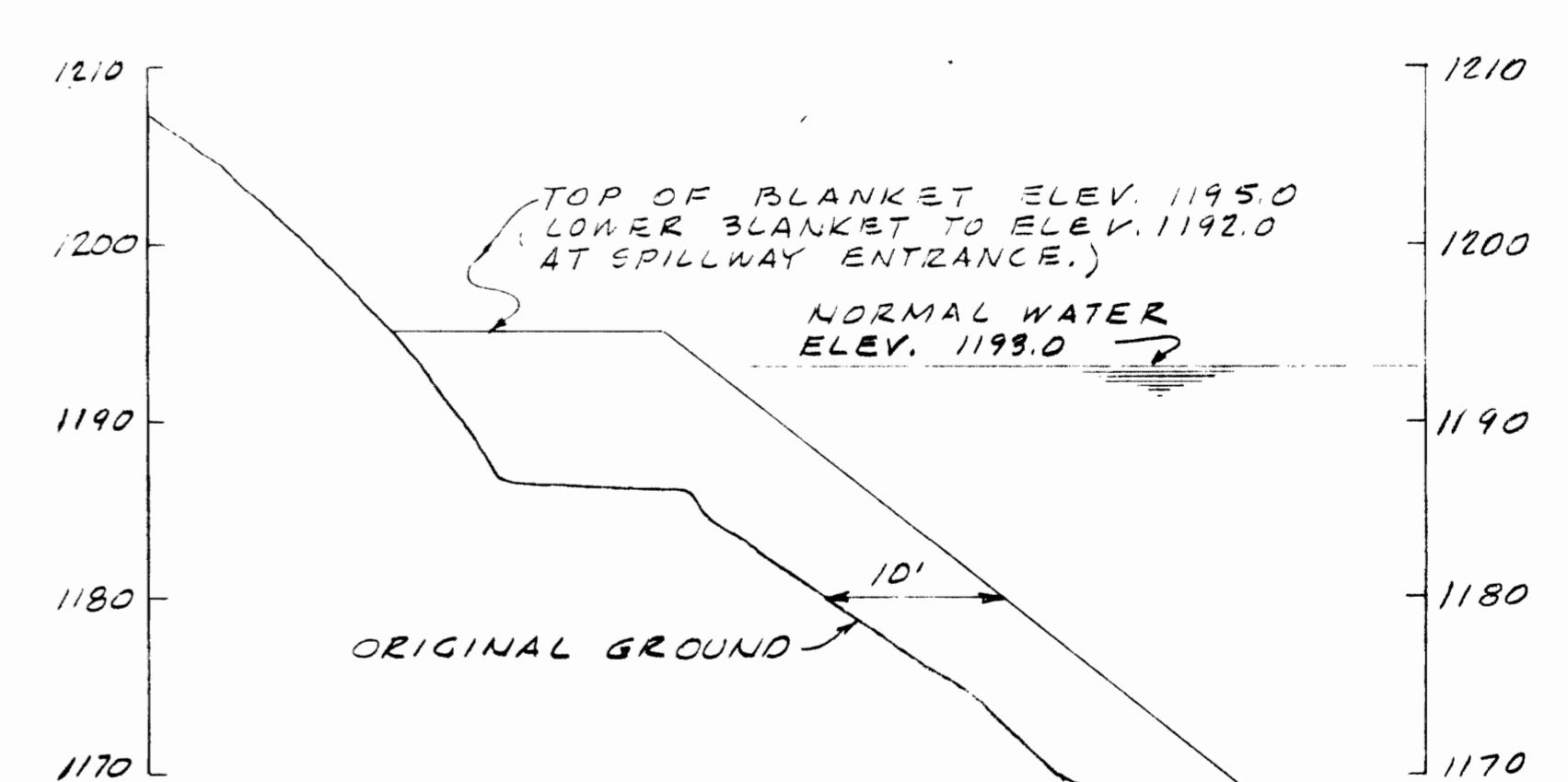
CENTERLINE PROFILE OF SPILLWAY

SCALE: 1" = 20' HORIZ. & VERT.



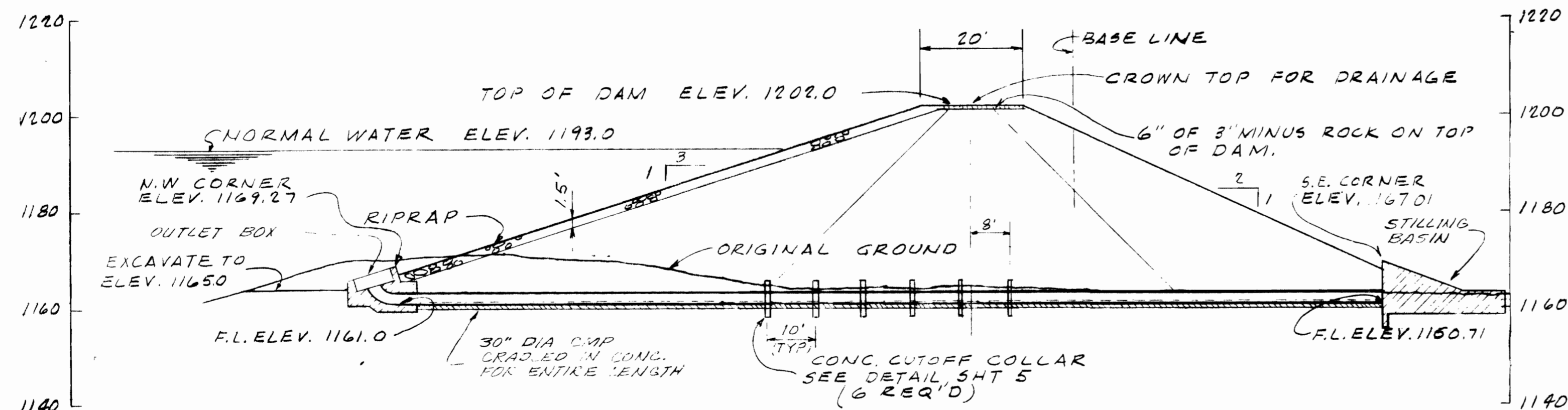
SECTION THROUGH SPILLWAY @ BASE LINE

SCALE: 1" = 20' HORIZ. & VERT.



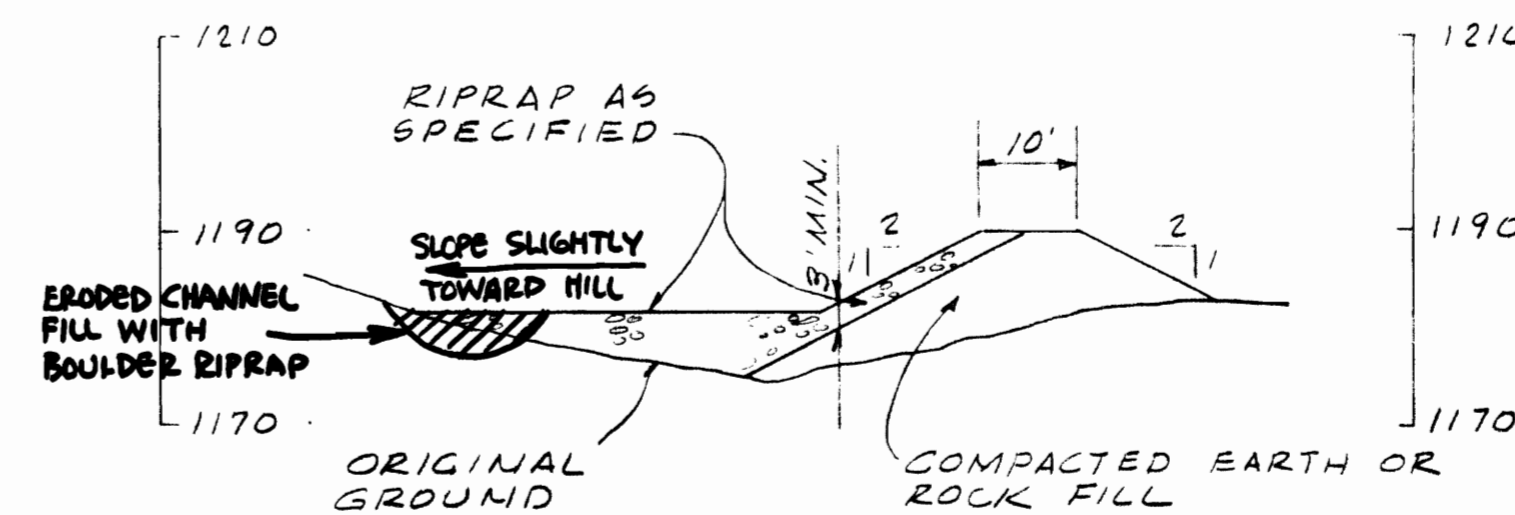
SECTION @ BLANKET

SCALE: 1" = 10' HORIZ. & VERT.



SECTION THROUGH OUTLET PIPING & STRUCTURES

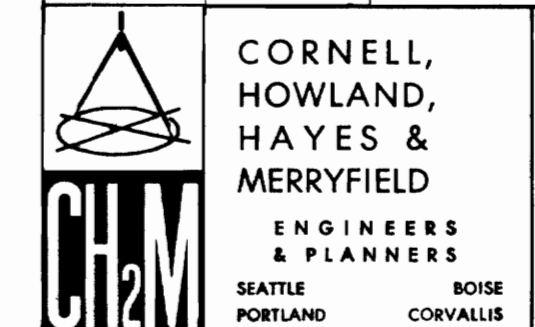
SCALE: 1" = 20' HORIZ. & VERT.



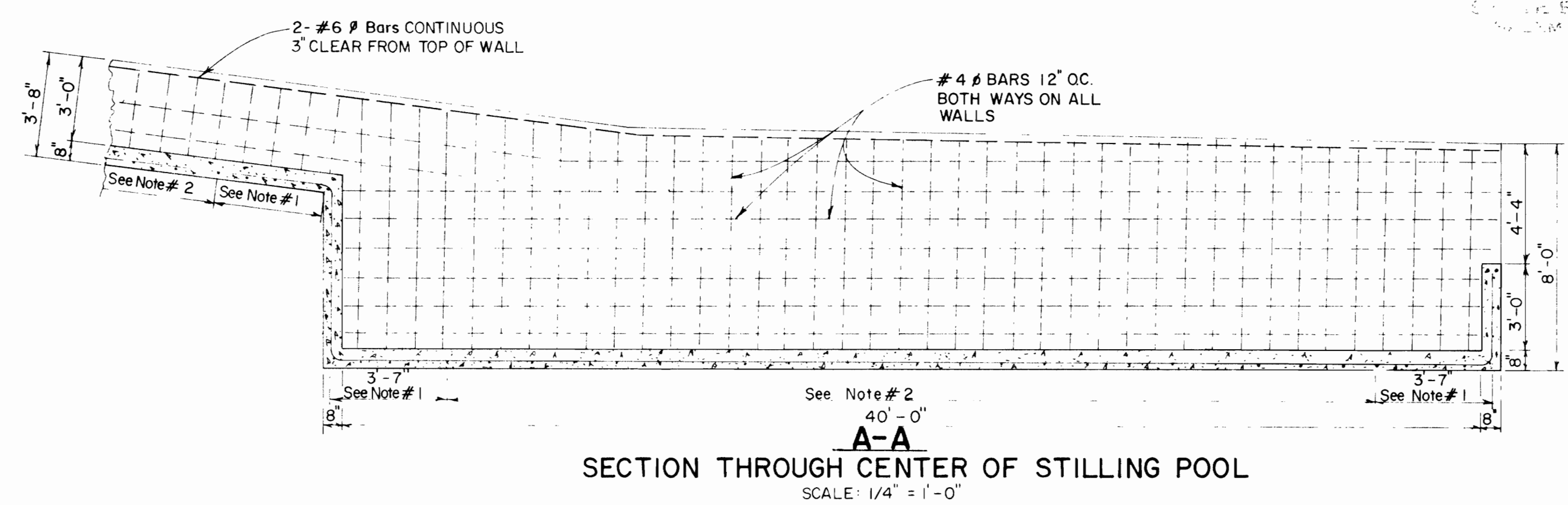
SECTION THROUGH SPILLWAY & SPILLWAY DIKE

SCALE: 1" = 20' HORIZ. & VERT.

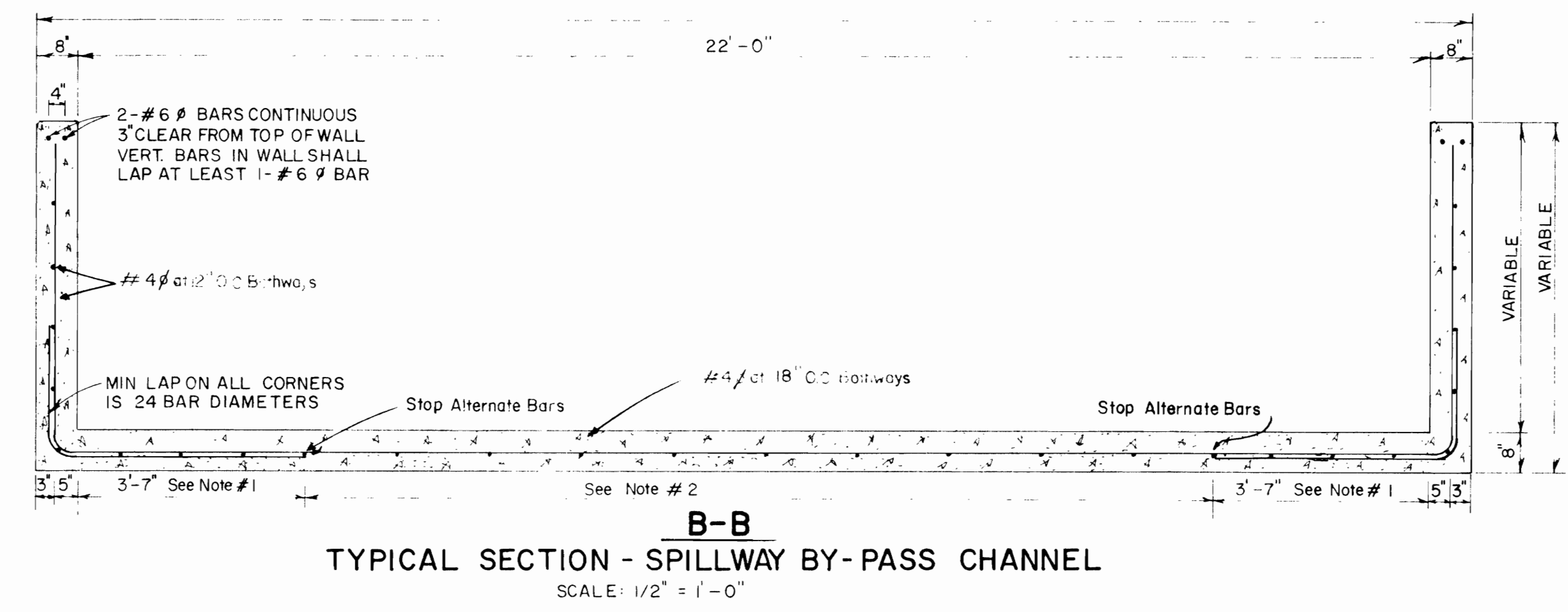
REPAIRS TO SPILLWAY		RWL	RWL
1	JAN. 14 '72	BY	RWL
2	NOV. 15 '65	BY	RWL
NO. DATE REVISIONS		BY	CHK APP
DES	SHEET		
DR	OF 5		
CK	DATE		
FWL	FEB. 1985		
BN	SCALE		
	AS SHOWN		
DWG			
C3398-1			



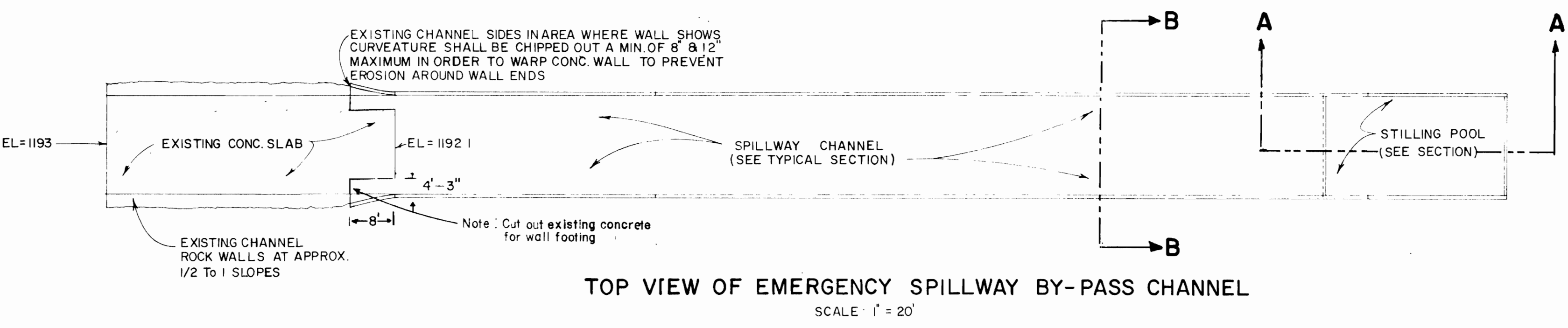
CITY OF TILLAMOOK, OREGON
WATER COMMISSION
SKOOKUM LAKE DAM
SECTIONS & PROFILES



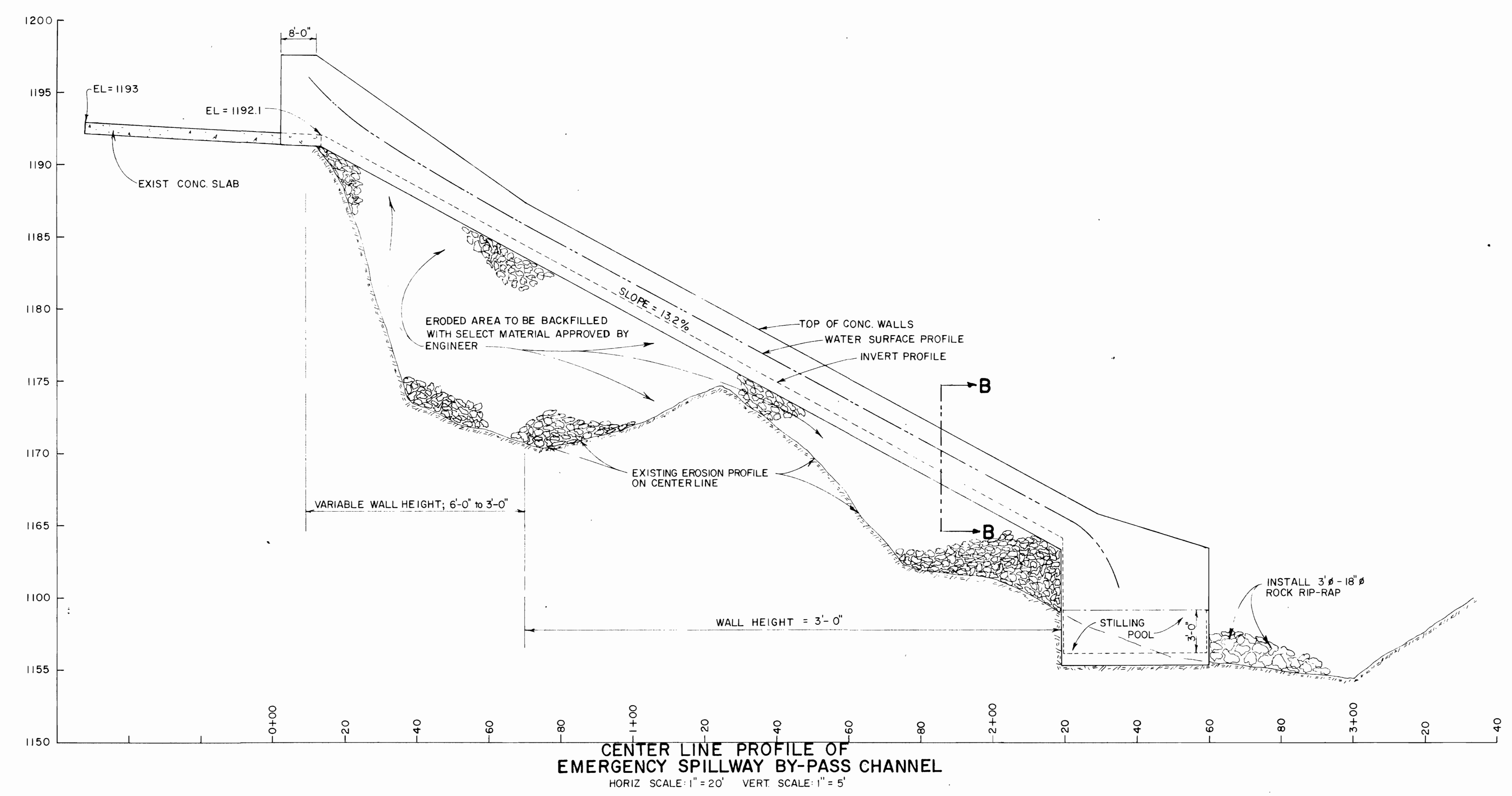
SECTION THROUGH CENTER OF STILLING POOL
 SCALE: 1/4" = 1'-0"



TYPICAL SECTION - SPILLWAY BY-PASS CHANNEL
 SCALE: 1/2" = 1'-0"



TOP VIEW OF EMERGENCY SPILLWAY BY-PASS CHANNEL
 SCALE: 1" = 20'



CENTER LINE PROFILE OF EMERGENCY SPILLWAY BY-PASS CHANNEL
 HORIZ SCALE: 1" = 20' VERT SCALE: 1" = 5'

- NOTE:
- #4 bars 12" O.C. BOTH WAYS ALL WALLS AND 3'-7" INTO FLOORS OF STRUCTURE
 - #4 bars 12" O.C. BOTH WAYS IN FLOORS OTHER THAN AREA IN NOTE 1.
 - ALL CONCRETE IN WALLS & SLABS SHALL BE CLASS "B" (2500 PSI AT 28 DAYS), MAXIMUM SLUMP 2 1/2" UNLESS AUTHORIZED BY ENGINEER.
 - EXPANSION JOINTS SHALL BE PLACED ON 40' CENTERS OR LESS
 - ALL CONCRETE POURS SHALL BE CONTINUOUS IN NATURE WITH BREAKS IN POURS REQUIRING EXPANSION JOINT. NO CONCRETE SHALL BE PLACED AGAINST CONCRETE WITH A TIME LAG BETWEEN POURS IN EXCESS OF 45 MINUTES UNLESS A CONSTRUCTION JOINT IS PROVIDED
 - ALL EXPOSED EDGES ARE TO BE ROUNDED WITH AN EDGING TOOL

APPROVED: *Hay L., 1972*
 STATE ENGINEER

SKOOKUM LAKE SPILLWAY BY-PASS CHANNEL REPAIR			
FOR TILLAMOOK WATER COMMISSION TILLAMOOK, OREGON			
Scale: As Shown	Date: 4-18-72	Revised	
Design M.G.B.	BOATWRIGHT ENGINEERING INC.		SHEET
Drawn G.T.D.	2613 12th STREET S.E. SALEM OREGON		
Checked J.F.			