

RECEIVED

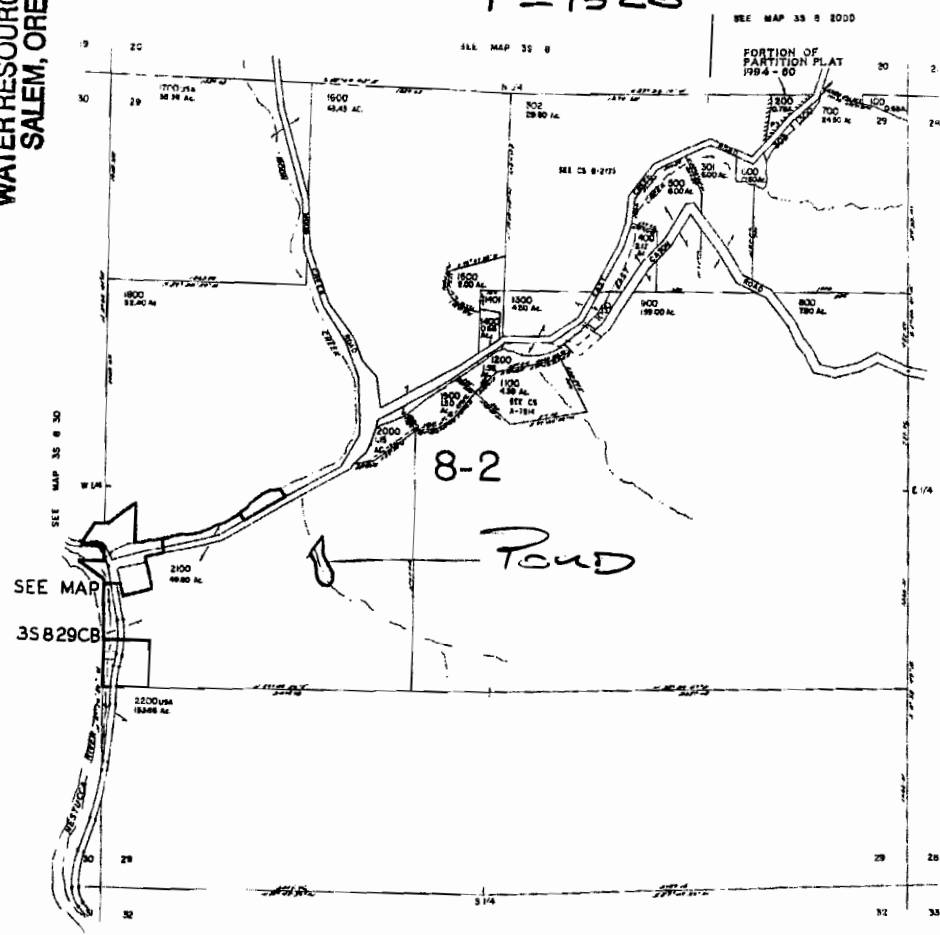
OCT 21 2008

WATER RESOURCES DEPT
SALEM, OREGON

ASSESSMENT PURPOSE ONLY

TILLAMOOK COUNTY

1" = 1320'



SEE MAP
35 8 29 CB

SEE MAP 35 8

35 8 29

REVISED 04/08/05, MS