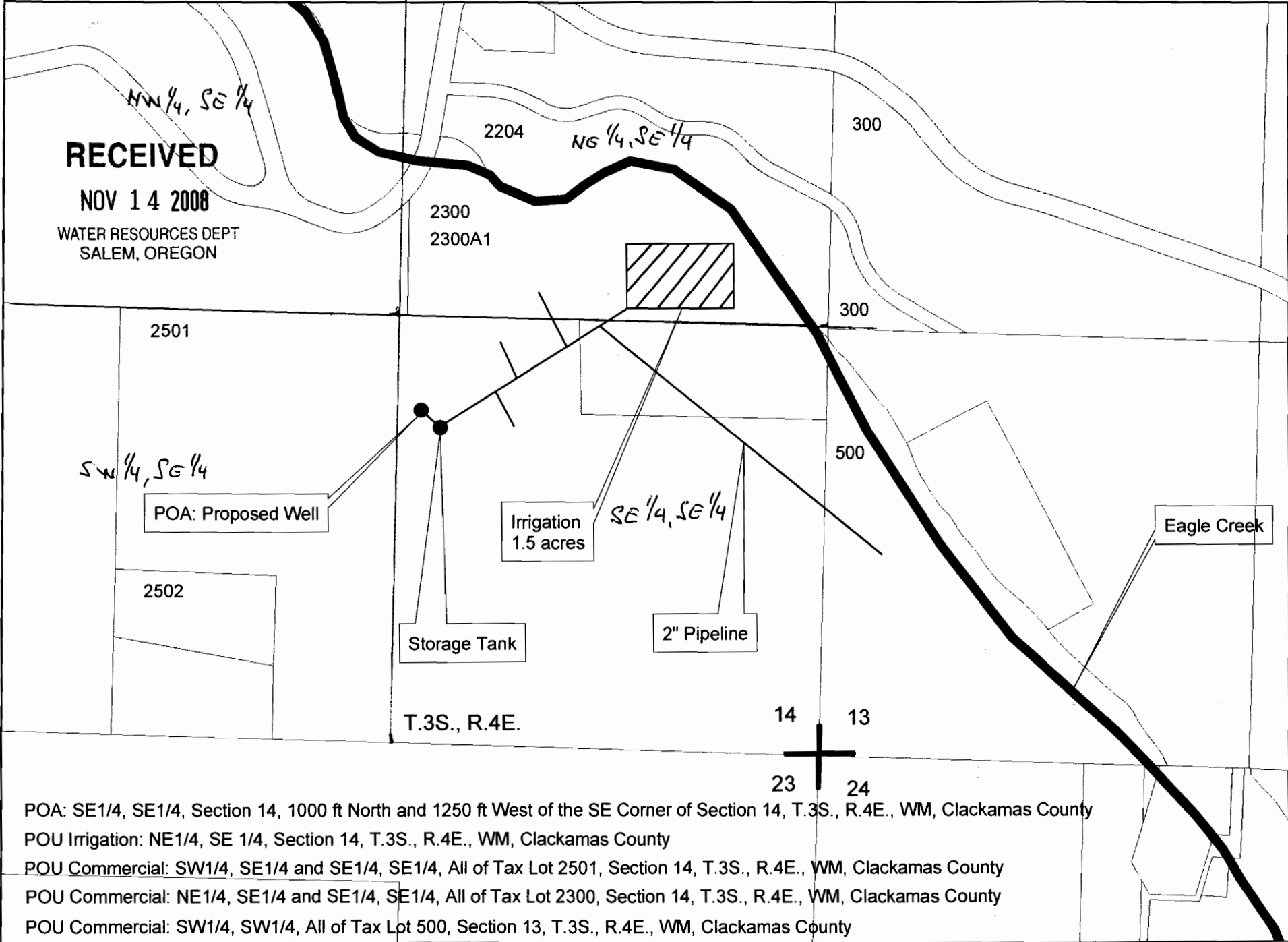


Application Map for a Groundwater Permit
for Eagle Fern Camp

WORK COPY



RECEIVED

NOV 14 2008

WATER RESOURCES DEPT
SALEM, OREGON

2501

2502

POA: Proposed Well

Irrigation
1.5 acres

Storage Tank

2" Pipeline

Eagle Creek

T.3S., R.4E.

14 13

23 24

- POA: SE1/4, SE1/4, Section 14, 1000 ft North and 1250 ft West of the SE Corner of Section 14, T.3S., R.4E., WM, Clackamas County
- POU Irrigation: NE1/4, SE 1/4, Section 14, T.3S., R.4E., WM, Clackamas County
- POU Commercial: SW1/4, SE1/4 and SE1/4, SE1/4, All of Tax Lot 2501, Section 14, T.3S., R.4E., WM, Clackamas County
- POU Commercial: NE1/4, SE1/4 and SE1/4, SE1/4, All of Tax Lot 2300, Section 14, T.3S., R.4E., WM, Clackamas County
- POU Commercial: SW1/4, SW1/4, All of Tax Lot 500, Section 13, T.3S., R.4E., WM, Clackamas County

0 100 200 400 600 800 Feet

1 inch equals 400 feet

Application Map for a Groundwater Permit
for Eagle Fern Camp

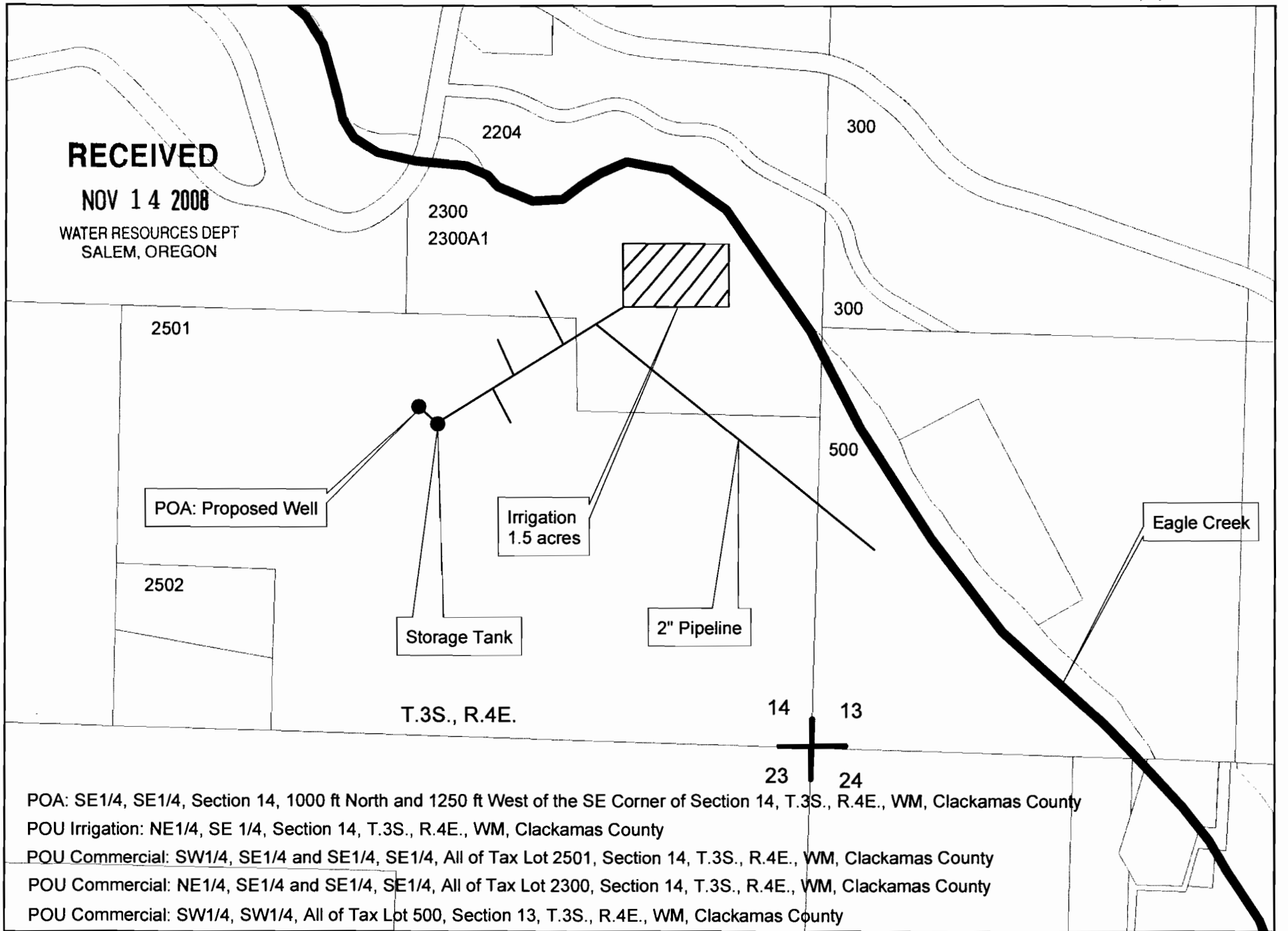
N



RECEIVED

NOV 14 2008

WATER RESOURCES DEPT
SALEM, OREGON



POA: SE1/4, SE1/4, Section 14, 1000 ft North and 1250 ft West of the SE Corner of Section 14, T.3S., R.4E., WM, Clackamas County
 POU Irrigation: NE1/4, SE 1/4, Section 14, T.3S., R.4E., WM, Clackamas County
 POU Commercial: SW1/4, SE1/4 and SE1/4, SE1/4, All of Tax Lot 2501, Section 14, T.3S., R.4E., WM, Clackamas County
 POU Commercial: NE1/4, SE1/4 and SE1/4, SE1/4, All of Tax Lot 2300, Section 14, T.3S., R.4E., WM, Clackamas County
 POU Commercial: SW1/4, SW1/4, All of Tax Lot 500, Section 13, T.3S., R.4E., WM, Clackamas County

0 100 200 400 600 800 Feet

1 inch equals 400 feet