

## Herb Mosgar

---

**From:** Jonnine Skaug  
**Sent:** Wednesday, November 19, 2008 6:49 AM  
**To:** Herb Mosgar  
**Subject:** FW: Alt-Res Application

**Jonnine Skaug**  
**Water Rights/Adjudication Division**  
OR Water Resources Department  
725 Summer Street NE, Suite A  
Salem, OR 97301  
**phone: 503-986-0807**  
**fax: 503-986-0901**

---

**From:** hughes matthew [mailto:mah1327@yahoo.com]  
**Sent:** Tuesday, November 18, 2008 8:42 PM  
**To:** Jonnine Skaug  
**Subject:** Re: Alt-Res Application

Looks good. I approve. Thank you Jonnine and Herb.  
-Matt Hughes

--- On **Tue, 11/18/08**, **Jonnine Skaug** <skaugjl@wrд.state.or.us> wrote:

From: Jonnine Skaug <skaugjl@wrд.state.or.us>  
Subject: Alt-Res Application  
To: "MAH1327@yahoo.com" <MAH1327@yahoo.com>  
Cc: "Herb Mosgar" <mosgarhl@wrд.state.or.us>  
Date: Tuesday, November 18, 2008, 4:07 PM

Hi Matthew,

attached you will find the information Herb asked me to send to you.  
Please contact Herb if you have any questions.

thank you,

**Jonnine Skaug**  
**Water Rights/Adjudication Division**  
OR Water Resources Department  
725 Summer Street NE, Suite A  
Salem , OR 97301  
**phone: 503-986-0807**  
**fax: 503-986-0901**

SEC. 31 T.10S. R.4.W. W.M.  
BENTON COUNTY

1" = 600'

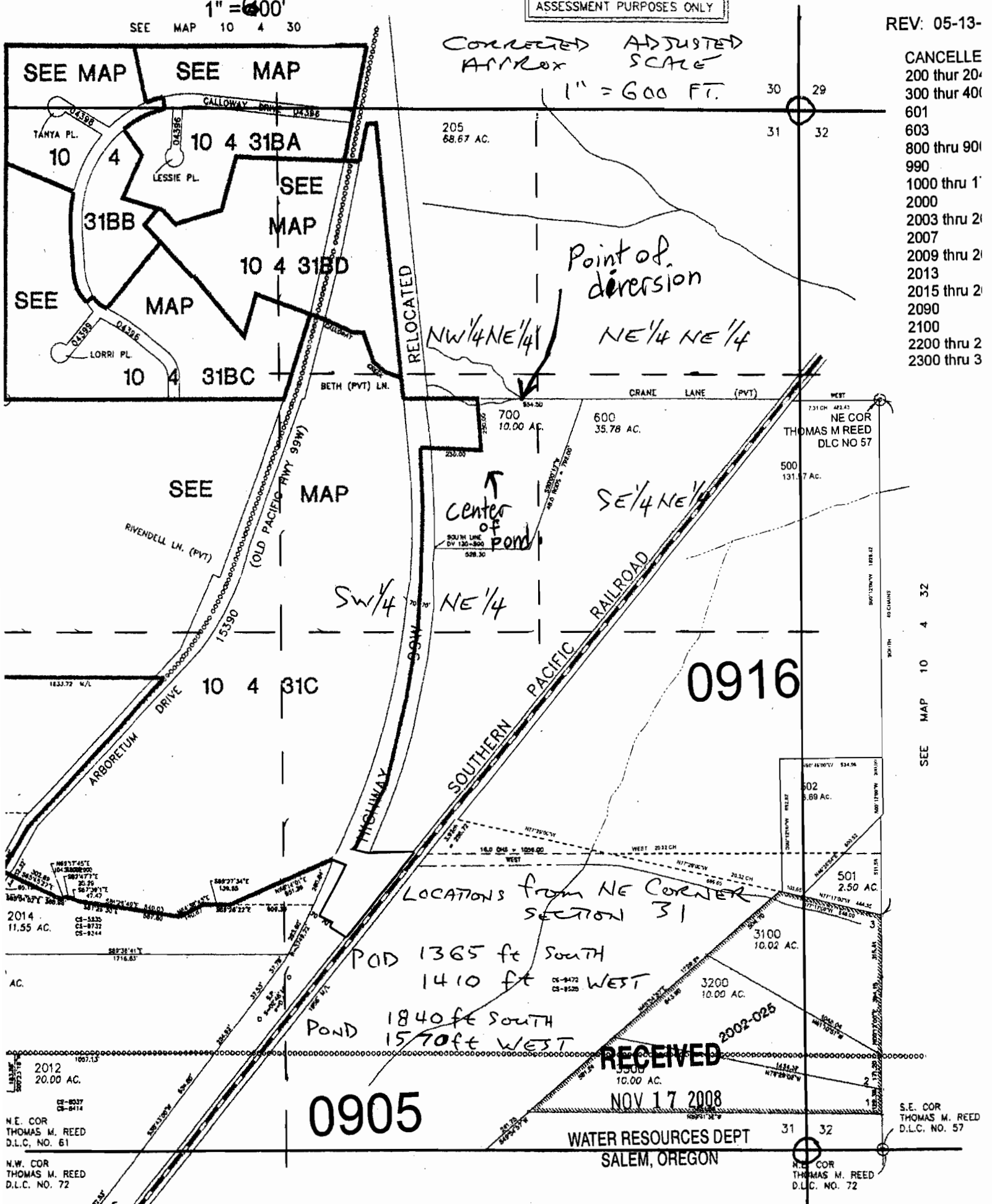
SEE MAP 10 4 30

THIS MAP WAS PREPARED FOR  
ASSESSMENT PURPOSES ONLY

10 4 31

REV: 05-13-

- CANCELLED
- 200 thru 204
- 300 thru 400
- 601
- 603
- 800 thru 900
- 990
- 1000 thru 1200
- 2003 thru 2007
- 2009 thru 2013
- 2015 thru 2019
- 2100
- 2200 thru 2300
- 2300 thru 3



Corrected ADJUSTED  
Approx SCALE  
1" = 600 FT.

Point of diversion  
NW 1/4 NE 1/4  
NE 1/4 NE 1/4

Center of Pond  
SOUTH LINE DV 130-300  
528.30

SW 1/4 NE 1/4

LOCATIONS from NE CORNER SECTION 31

POD 1365 ft South  
1410 ft WEST

POND 1840 ft South  
1570 ft WEST

RECEIVED  
NOV 17 2008

WATER RESOURCES DEPT  
SALEM, OREGON

SEE MAP 10 4 32

S.E. COR THOMAS M. REED  
D.L.C. NO. 57

N.E. COR THOMAS M. REED  
D.L.C. NO. 72

N.E. COR THOMAS M. REED  
D.L.C. NO. 61

N.W. COR THOMAS M. REED  
D.L.C. NO. 72

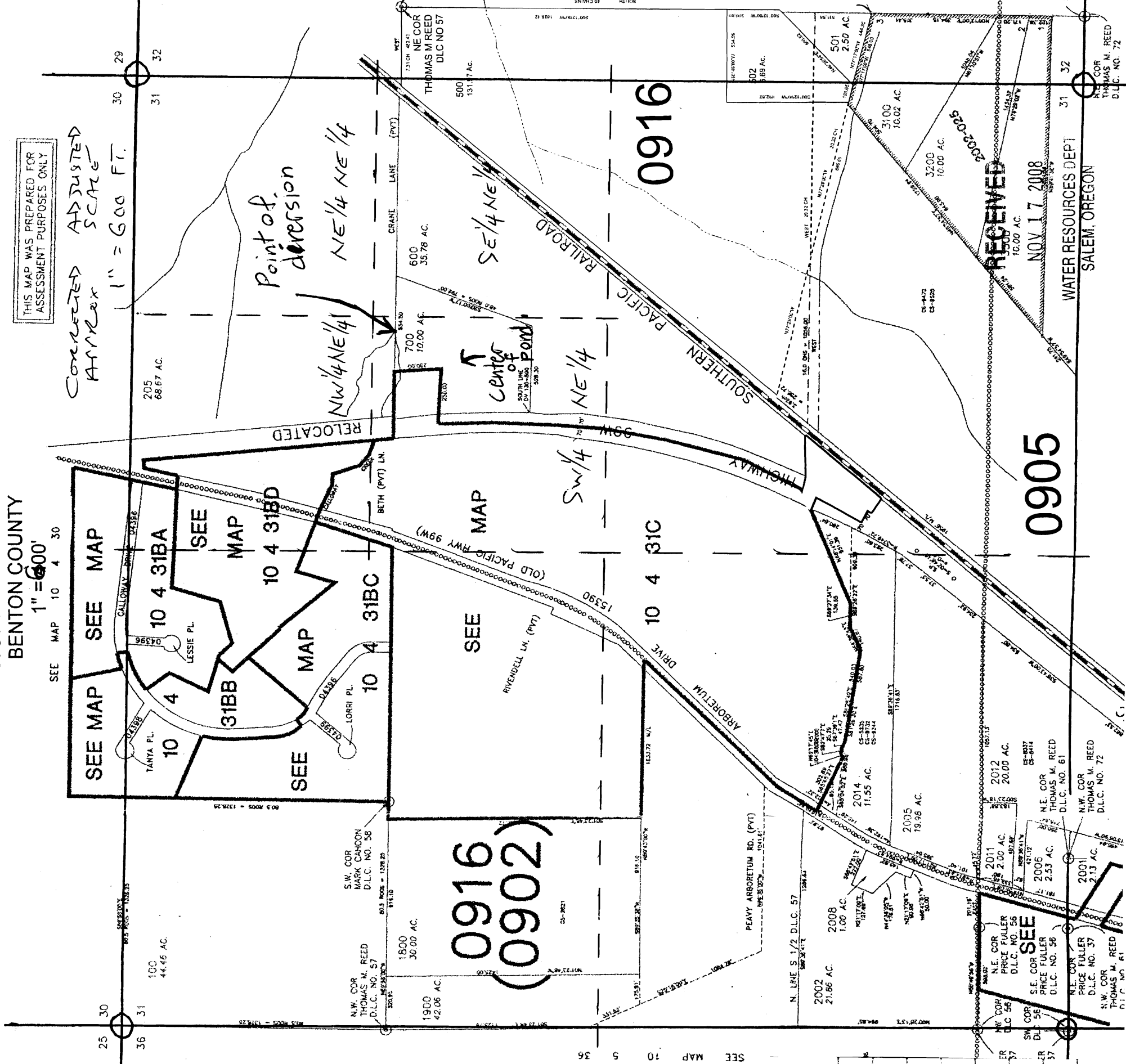
SEC. 31 T.10S. R.4.W. W.M.  
BENTON COUNTY  
1" = 600'

SEE MAP 10 4 30

THIS MAP WAS PREPARED FOR ASSESSMENT PURPOSES ONLY

CORRECTED ADJUSTED  
ANNEX SCALE  
1" = 600 FT.

- REV: 05-13-
- CANCELLE
- 200 thru 20
- 300 thru 40
- 601
- 603
- 800 thru 90
- 990
- 1000 thru 1
- 2000
- 2003 thru 2
- 2007
- 2009 thru 2
- 2013
- 2015 thru 2
- 2090
- 2100
- 2200 thru 2
- 2300 thru 3



Point of Diversion is  
 approx. 2025' ft. from  
 the NE corner of sec. 31.

Center of pond is  
 approx. 2400' ft. from  
 the NE corner of sec. 31.

from location & position location  
 is missing.

SEE MAP 10 4 36

SEE MAP 10 4 37

SEE MAP 10 4 38

SEE MAP 10 4 39

SEE MAP 10 4 40

SEE MAP 10 4 41

SEE MAP 10 4 42

SEE MAP 10 4 43

SEE MAP 10 4 44

SEE MAP 10 4 45

SEE MAP 10 4 46

SEE MAP 10 4 47

SEE MAP 10 4 48

SEE MAP 10 4 49

SEE MAP 10 4 50

SEE MAP 10 4 51

SEE MAP 10 4 52

SEE MAP 10 4 53

SEE MAP 10 4 54

SEE MAP 10 4 55

SEE MAP 10 4 56

0905

0916

0916  
(0902)

RECEIVED  
NOV 17 2008

WATER RESOURCES DEPT  
SALEM, OREGON

S.E. COR  
THOMAS M. REED  
D.L.C. NO. 57

N.E. COR  
THOMAS M. REED  
D.L.C. NO. 72

N.E. COR  
THOMAS M. REED  
D.L.C. NO. 61

N.W. COR  
THOMAS M. REED  
D.L.C. NO. 72

N.W. COR  
THOMAS M. REED  
D.L.C. NO. 81

N.W. COR  
THOMAS M. REED  
D.L.C. NO. 37

N.W. COR  
THOMAS M. REED  
D.L.C. NO. 56

N.W. COR  
THOMAS M. REED  
D.L.C. NO. 55

N.E. COR  
THOMAS M. REED  
D.L.C. NO. 56

N.E. COR  
THOMAS M. REED  
D.L.C. NO. 55

N.E. COR  
THOMAS M. REED  
D.L.C. NO. 55

N.E. COR  
THOMAS M. REED  
D.L.C. NO. 55

N.E. COR  
THOMAS M. REED  
D.L.C. NO. 55