

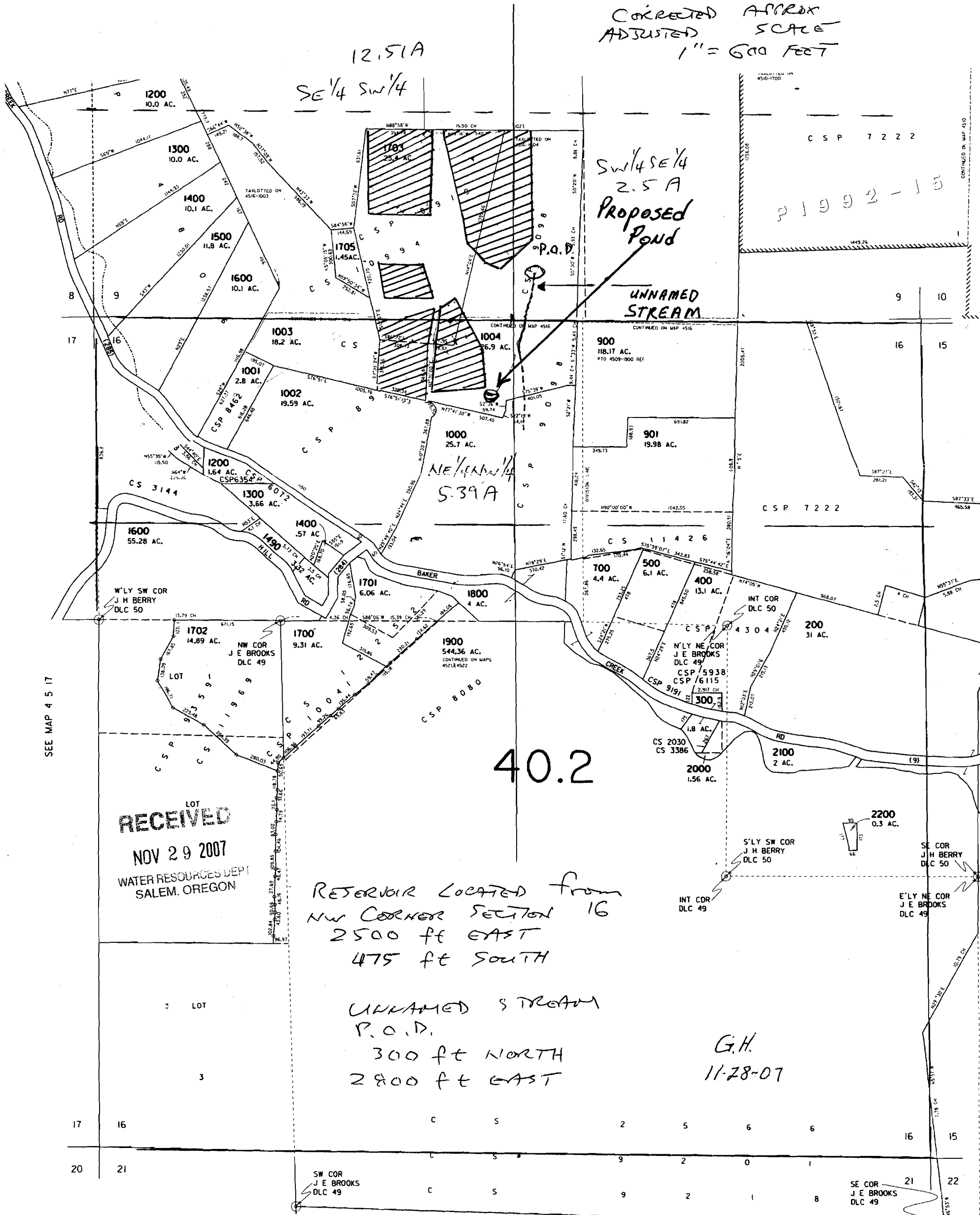
SECTION 9 T4S R5W W.M.
YAMHILL COUNTY

CORRECTED APPROX
ADJUSTED SCALE
1" = 600 FEET

12.51A
SE 1/4 SW 1/4

SW 1/4 SE 1/4
2.5 A
Proposed Pond

P 1992-15



LOT
RECEIVED
NOV 29 2007
WATER RESOURCES DEPT
SALEM, OREGON

RESERVOIR LOCATED FROM
NW CORNER SECTION 16
2500 FE EAST
475 FE SOUTH

UNNAMED STREAM
P.O.D.
300 FE NORTH
2800 FE EAST

G.H.
11-28-07

SEE MAP 4 5 17

40.2