

SEE MAP 38

246ft W

2,372 ft N

NOTE. SEC. Grid established from Co. Survey & Co. Road Surveys.

WATER RESOURCES DEPT  
SALEM, OREGON

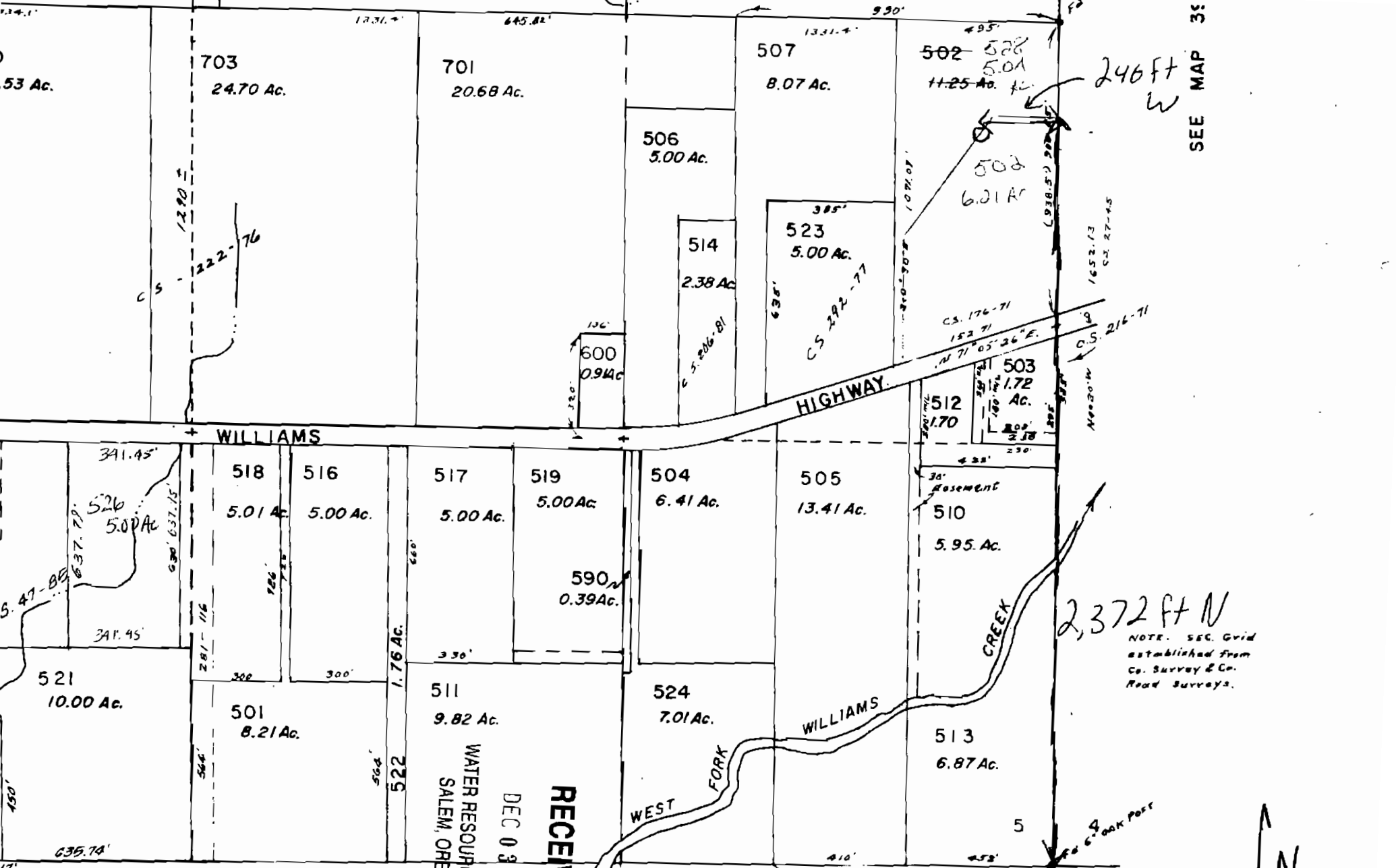
DEC 0 3 2008

RECEIVED

Scale 1" = 400'

TS 39 S Range 5W Section 5 NESE,  
2,372 ft N and 246ft W  
SW Corner Section 5

SEE MAP 39 5 8



134.1'  
.53 Ac.

703  
24.70 Ac.

701  
20.68 Ac.

507  
8.07 Ac.

502-528  
5.0A  
11.25 Ac. ±

506  
5.00 Ac.

514  
2.38 Ac.

523  
5.00 Ac.

508  
6.01 Ac.

600  
0.94 Ac.

503  
1.72 Ac.

512  
1.70 Ac.

WILLIAMS

518  
5.01 Ac.

516  
5.00 Ac.

517  
5.00 Ac.

519  
5.00 Ac.

504  
6.41 Ac.

505  
13.41 Ac.

510  
5.95 Ac.

590  
0.39 Ac.

521  
10.00 Ac.

501  
8.21 Ac.

511  
9.82 Ac.

524  
7.01 Ac.

513  
6.87 Ac.

WEST 79.7564 (5360')

