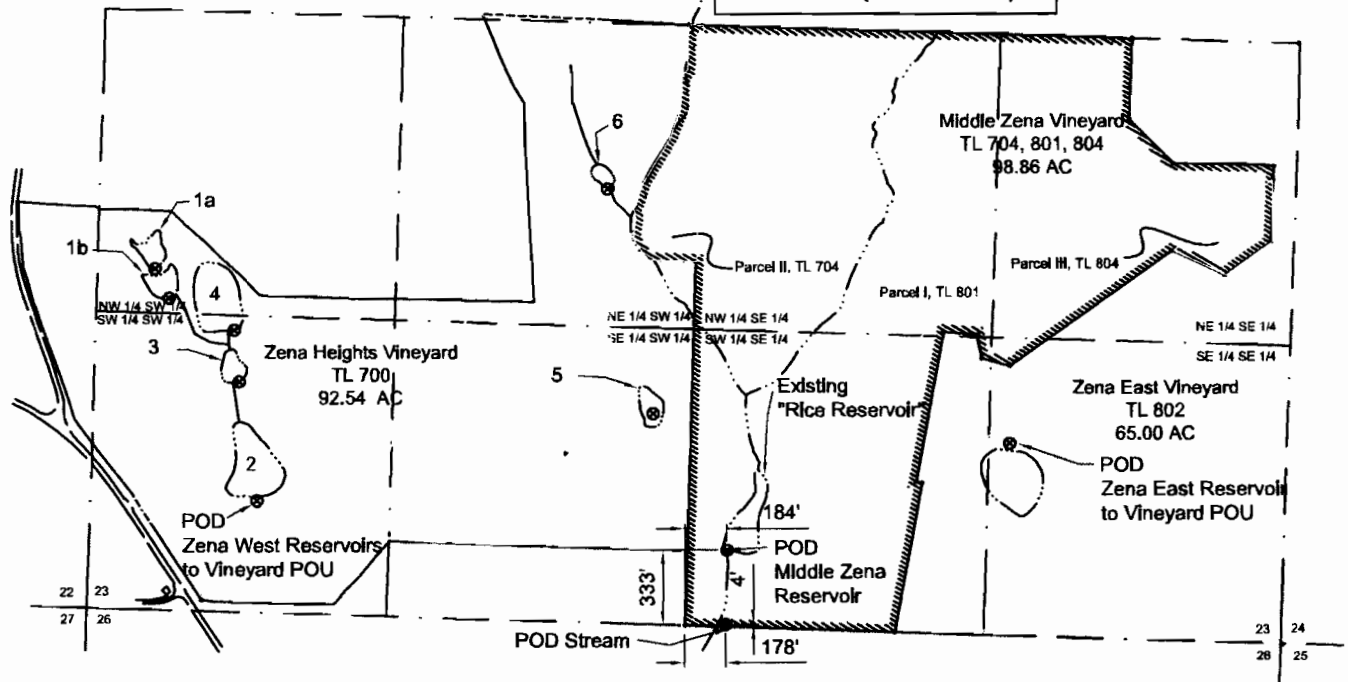


Middle Zena Vineyard

PLACE OF USE IN SECTION 23 SE BY 1/4, 1/4 SECTION	
NW 1/4, SE 1/4:	40.38 ACRES
NE 1/4, SE 1/4:	23.64 ACRES
SW 1/4, SE 1/4:	30.46 ACRES
SE 1/4, SE 1/4:	0.44 ACRES
NE 1/4, SW 1/4:	3.94 ACRES
POU Total (98.86 ACRES)	



Surface Water Application MAP

IN THE NAME OF:
Middle Zena VINEYARD, LLC

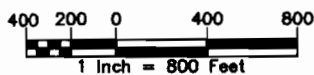
OCT 2007

T.6S.,R.4W.,W.M. SECTION 23

RECEIVED

NOV 19 2008

WATER RESOURCES DEPT
SALEM, OREGON

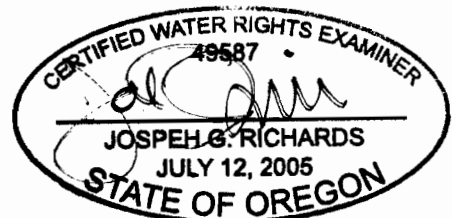


LEGEND

- TRANSFER PIPING
- APPLICANTS PROPERTY LINE
- SECTION LINE
- PLACE OF USE (POU)
- POINT OF DIVERSION (POD)

NOTE:

This map is for the purpose of identifying the location of the water right only and is not intended to provide legal dimensions or locations of property lines.



EXPIRATION DATE: 12/31/08