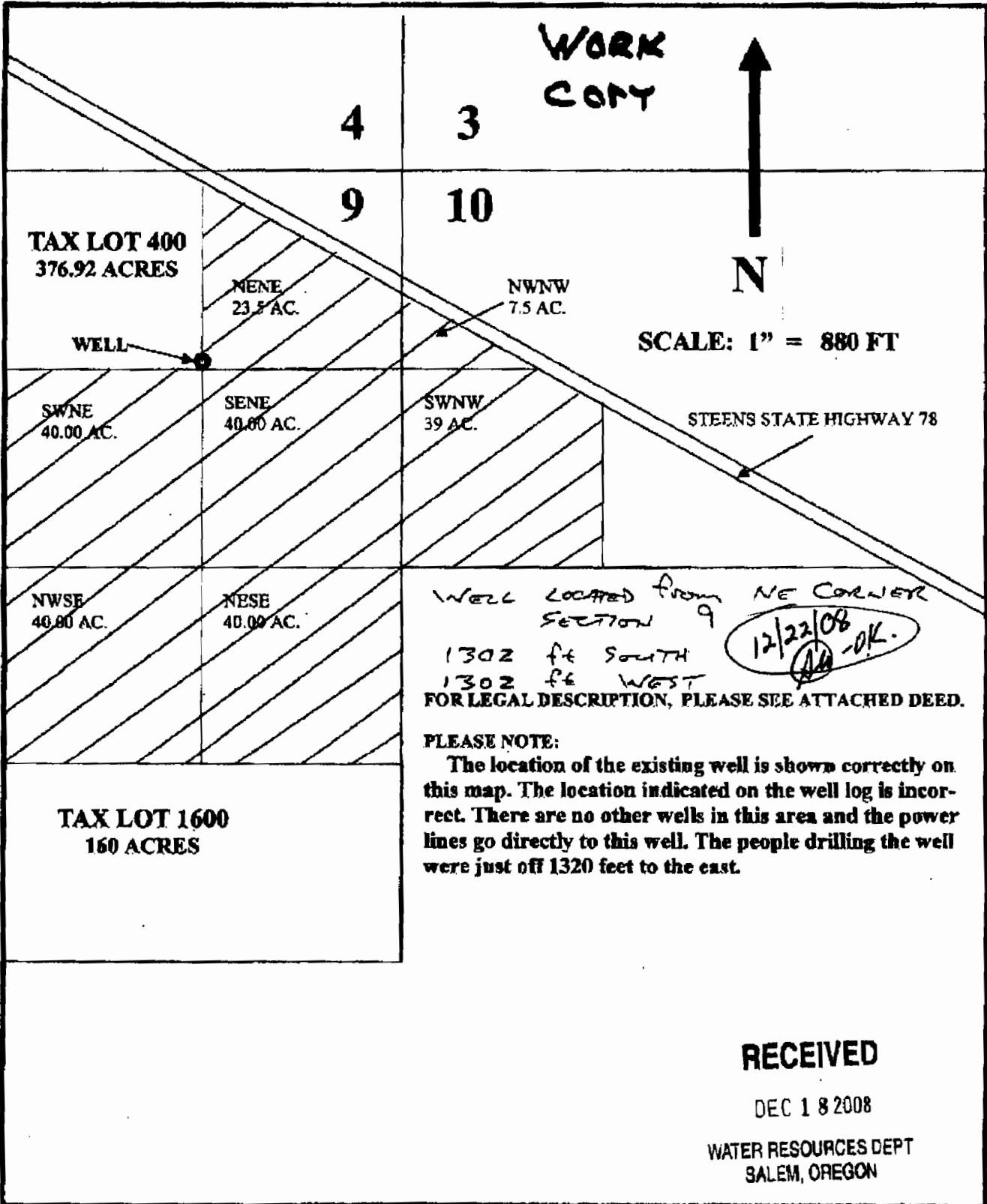


**APPLICATION MAP IN THE NAME OF GALE A. NELSON AND STANLEY L. KAZEBEE
1326 N. E. 12th AVE. , CANBY, OR 97013**



27S 34E
& INDEX

CANCELLED NO.
1900
2801
1301 (2008)

PRINTED ON
May 21, 2008
27S 34E
& INDEX

T.27S. R.34E. W.M.
HARNEY COUNTY

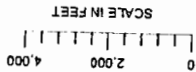
1" = 2000'

SEE MAP 28S 34E

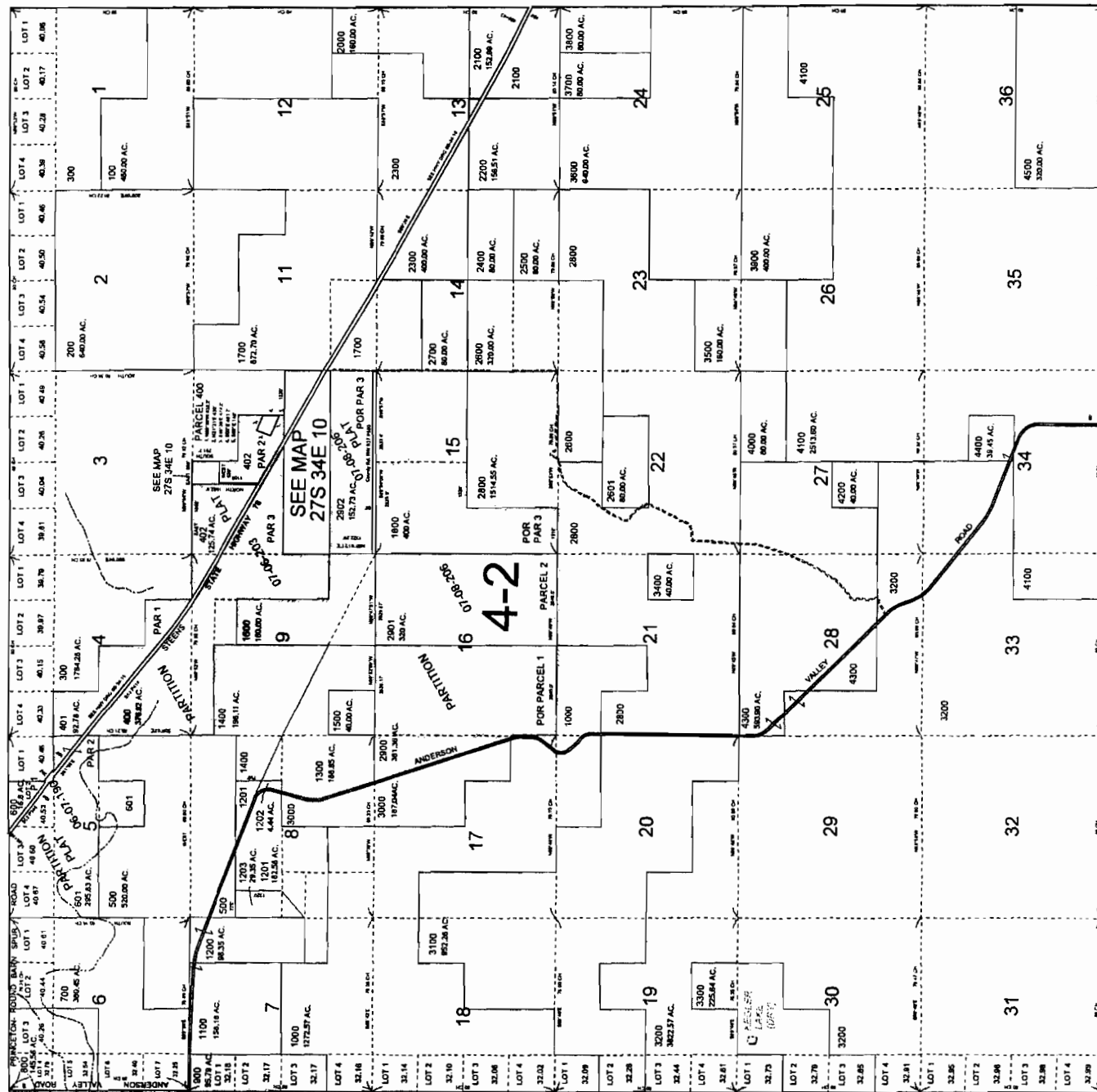
SEE MAP 27S 35E

SEE MAP 28S 34E

THIS MAP WAS PREPARED FOR
ASSESSMENT PURPOSE ONLY



SCALE IN FEET



SEE MAP 27S 33E

RECEIVED

DEC 18 2008

WATER RESOURCES DEPT
SALEM, OREGON