

YAMHILL COUNTY

1" = 400'

THIS MAP WAS PREPARED FOR ASSESSMENT PURPOSE ONLY

SECTION YAMHILL

SEE SEC. 5 6 25

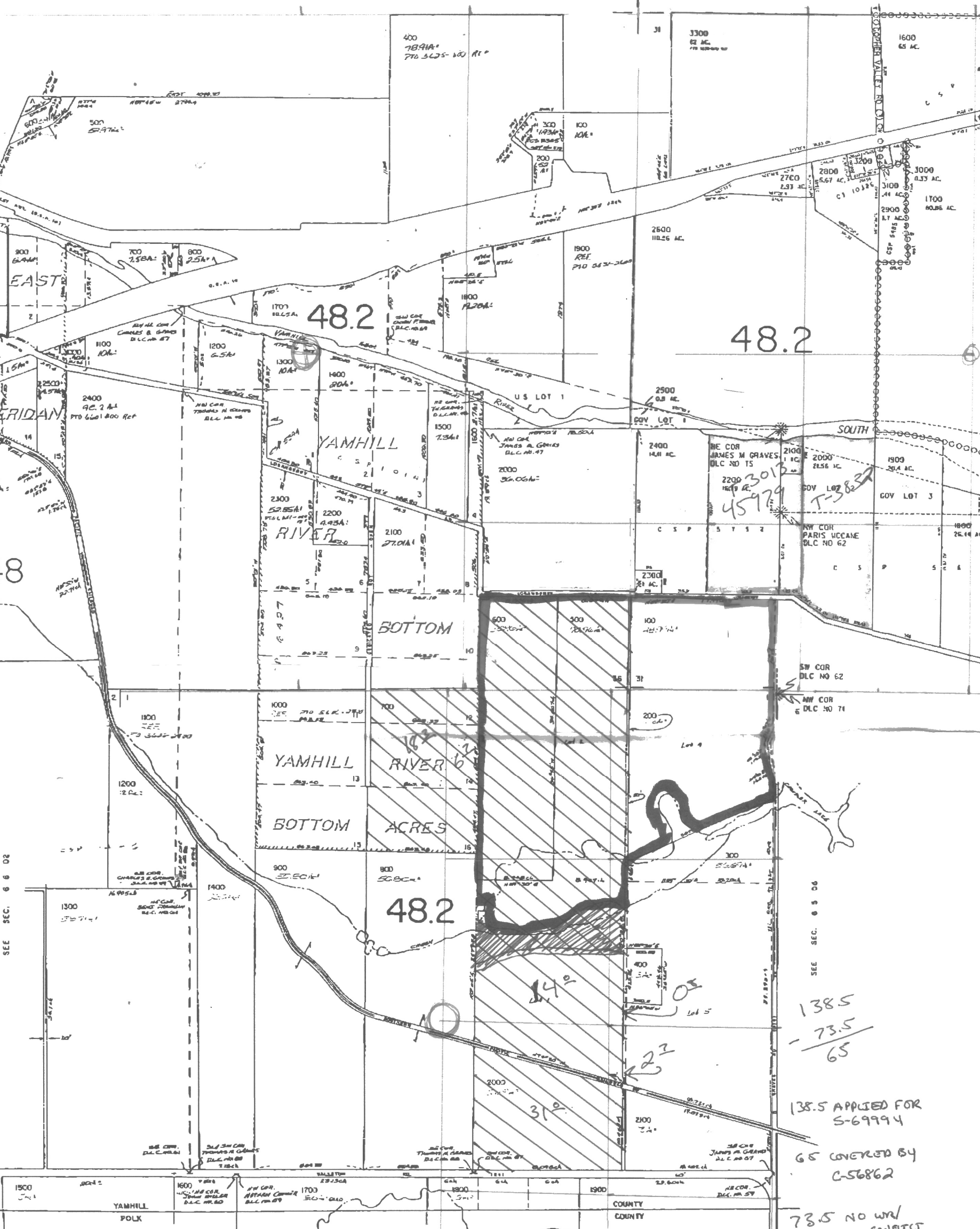
26 25
35 36

25 30

SEE SEC. 5 6 35

SEE MAP 5 6 35A

SEE SEC. 5 6 35



48

48.2

48.2

48.2

138.5
- 73.5

65

138.5 APPLIED FOR S-69994

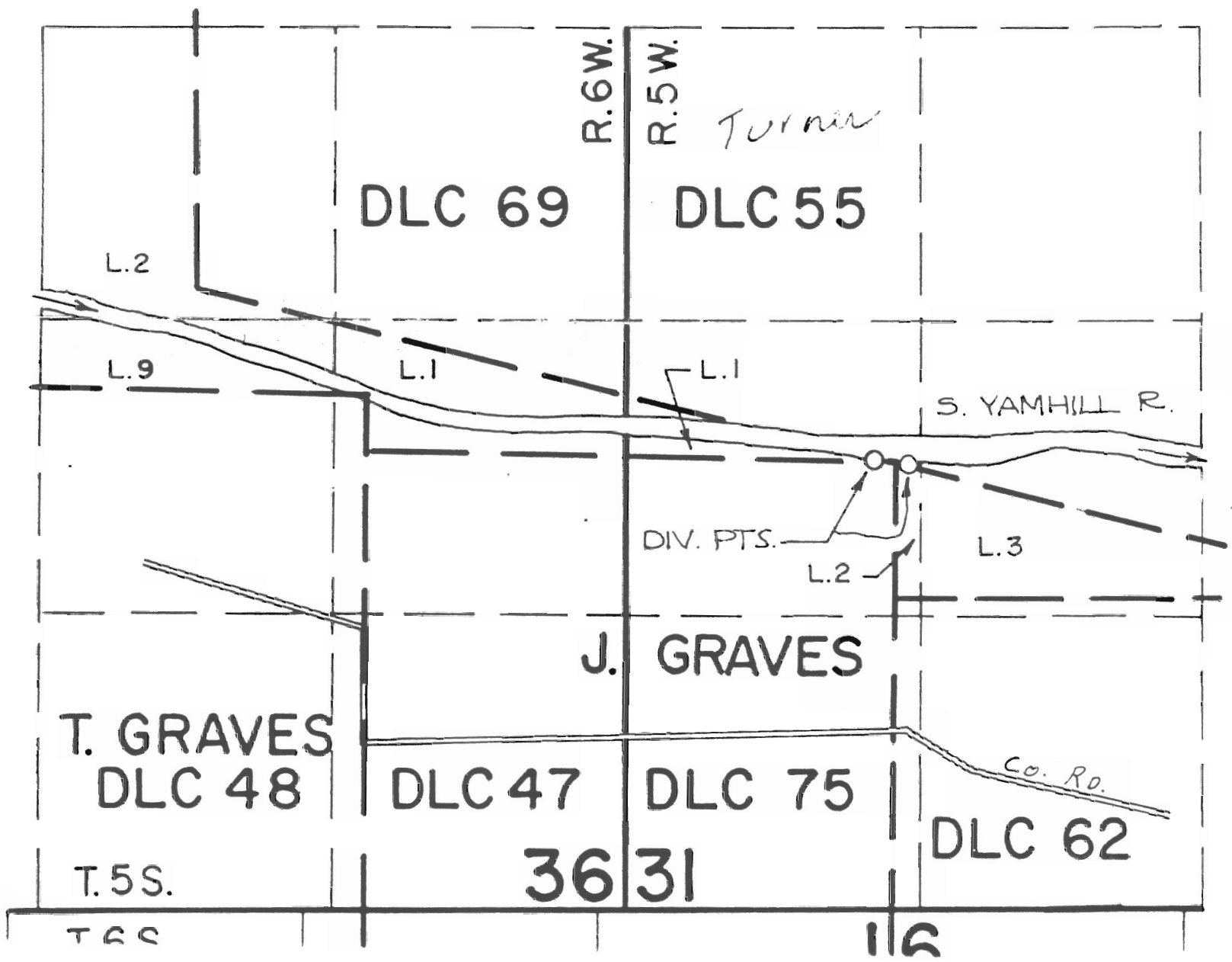
65 COVERED BY C-56862

73.5 NO WRD CORRECT

6601

2 1/2
1 1/2 12

T.5&6S., R.5&6W., W.M.



Enlarged 200%