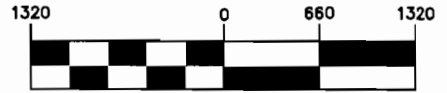






SCALE: 1" = 1320'



APPLICATION No.: G-14266

PERMIT No.: G-13181

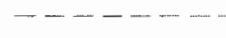
**LEGEND**



LANDS FOR "REQUEST FOR ASSIGNMENT"



SECTION LINE



1/4 1/4 LINE

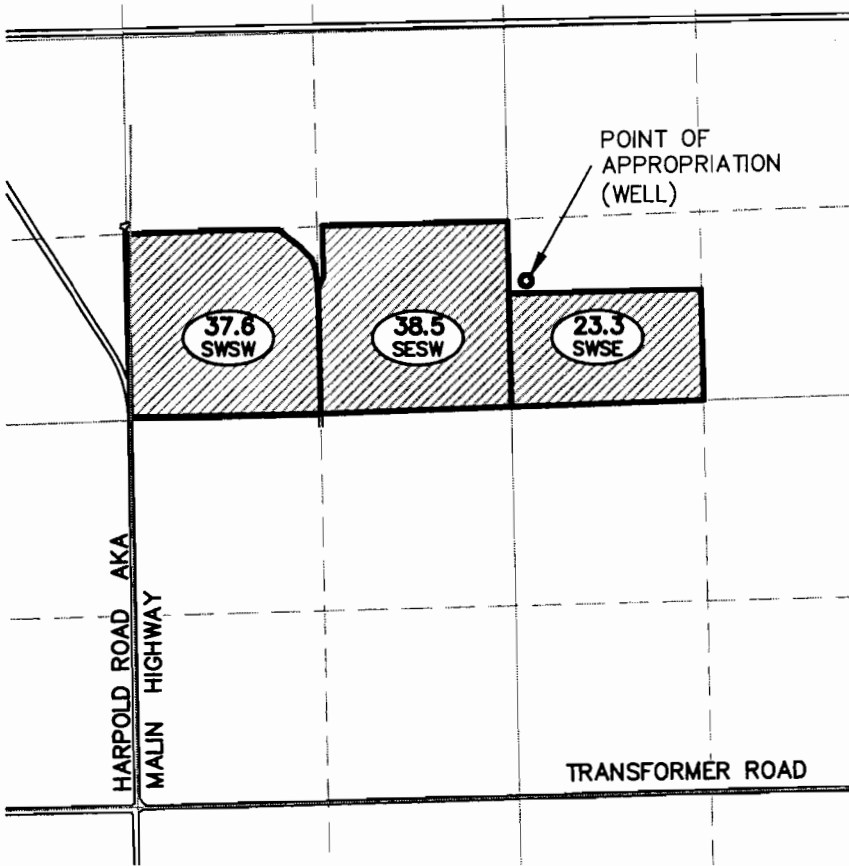
T.L. 600

TAX LOT NUMBER



IRRIGATED ACREAGE

1/4 1/4



**NOTES:**

1. THIS MAP WAS PREPARED FROM FIELD MEASUREMENTS, NAIP 2005 AERIAL PHOTOGRAPHS, OREGON GLO MAPS AND TAX MAPS.
2. THE PURPOSE OF THIS MAP IS TO IDENTIFY THE LOCATION OF THE WATER RIGHT ONLY, AND IS NOT INTENDED TO PROVIDE DIMENSIONS OR LOCATION OF PROPERTY LINES.

**RECEIVED**

OCT 01 2008

WATER RESOURCES DEPT  
SALEM, OREGON

GOV'T LOT	1/4 1/4	SECTION	TOWNSHIP	RANGE	TAX LOT #	# IRRIGATED ACRES
-	SW SW	32	40S	12E	1500	37.6
-	SE SW	32	40S	12E	1700	38.5
-	SW SE	32	40S	12E	1700	23.3

TOTAL ACRES IRRIGATED: 99.4

**ADKINS**



CONSULTING ENGINEERS, INC.

Engineers ▲ Planners ▲ Surveyors

2950 Shasta Way · Klamath Falls, Oregon 97603 · (541) 884-4666 · FAX (541) 884-5335  
Klamath Falls, OR · Medford, OR · Alturas, CA

3/19/08

BASE.DWG

2797-01

**REQUEST FOR ASSIGNMENT MAP  
FOR  
JAN & WILLIAM WALKER**

**IN SECTION 32, T40S, R12E, W.M.  
KLAMATH COUNTY, OREGON**

E:\1797-01\Les & Norma North\14\BASE.dwg Jan & Will Walker - 6/20/2008 3:53:08 PM