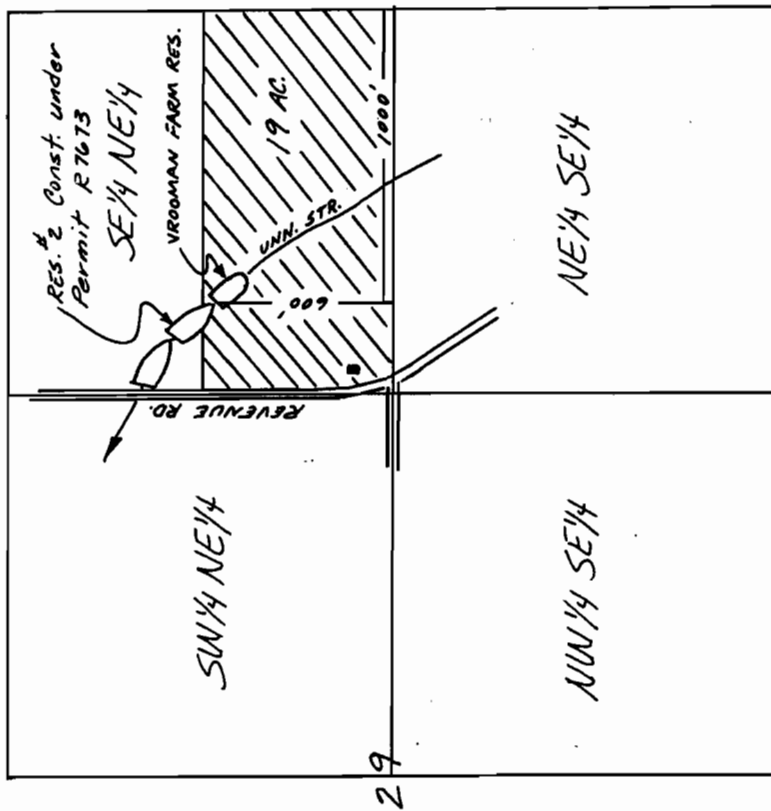


R-58186
 58187
 Application No. R-7747 43927
 Permit No.

T.1 S. R.4 E. W.M.



SCALE: 1" = 660'

THIS MAP PREPARED BY:
E.R. King
 FROM INFORMATION FURNISHED BY
 THE APPLICANT.

RECEIVED
 MAR 6 1979
 WATER RESOURCES DEPT.
 SALEM, OREGON

RECEIVED
 DEC 16 1978
 WATER RESOURCES DEPT.
 SALEM, OREGON