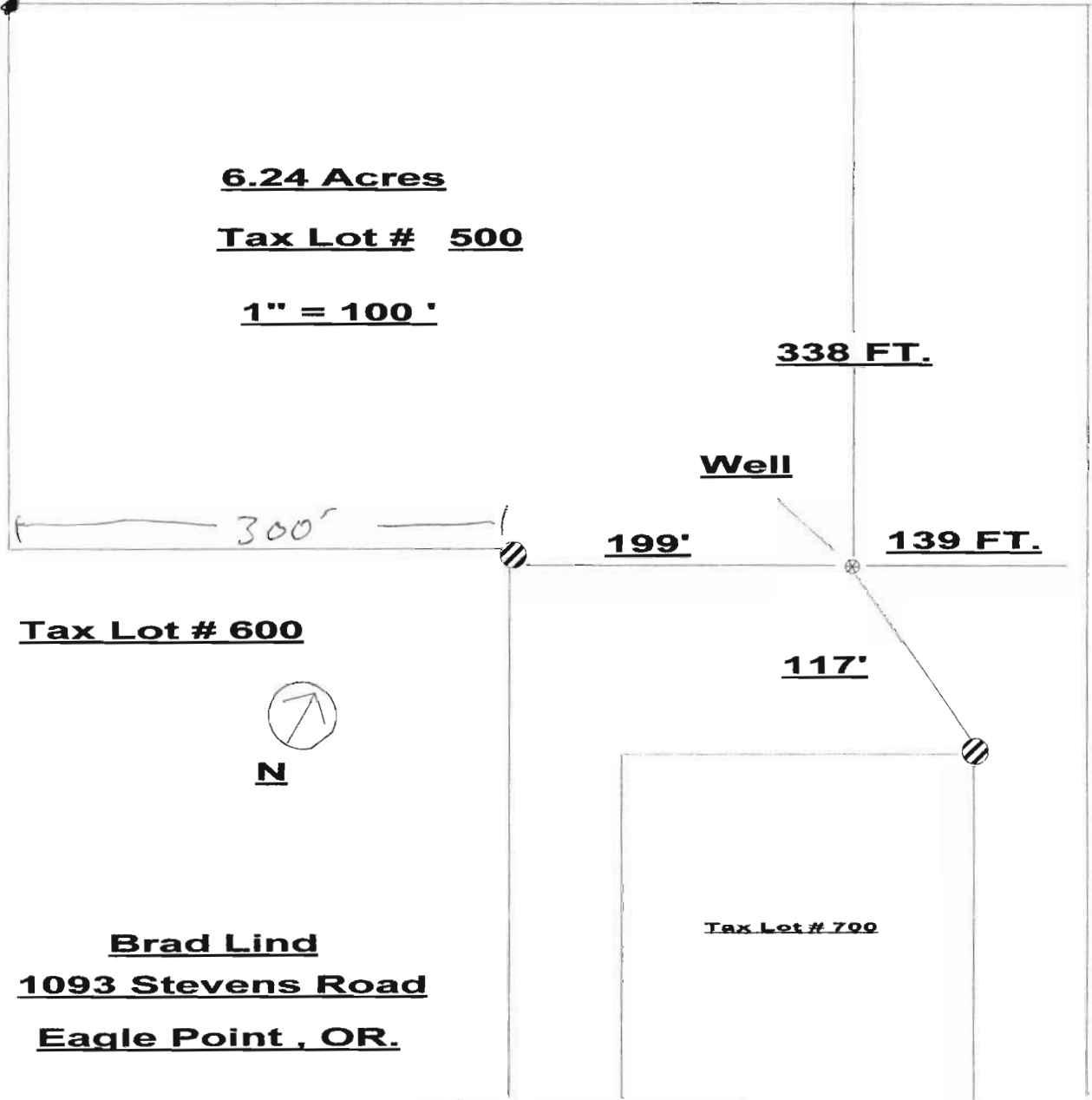


SE 1/4 SEC 2 T 36 S R 1 W W.M.

Center 1/4 corner



**6.24 Acres**

**Tax Lot # 500**

**1" = 100'**

**338 FT.**

**Well**

**300'**

**199'**

**139 FT.**

**Tax Lot # 600**



**N**

**117'**

**Tax Lot # 700**

**Brad Lind**

**1093 Stevens Road**

**Eagle Point, OR.**

Well is 338'S & 499'E

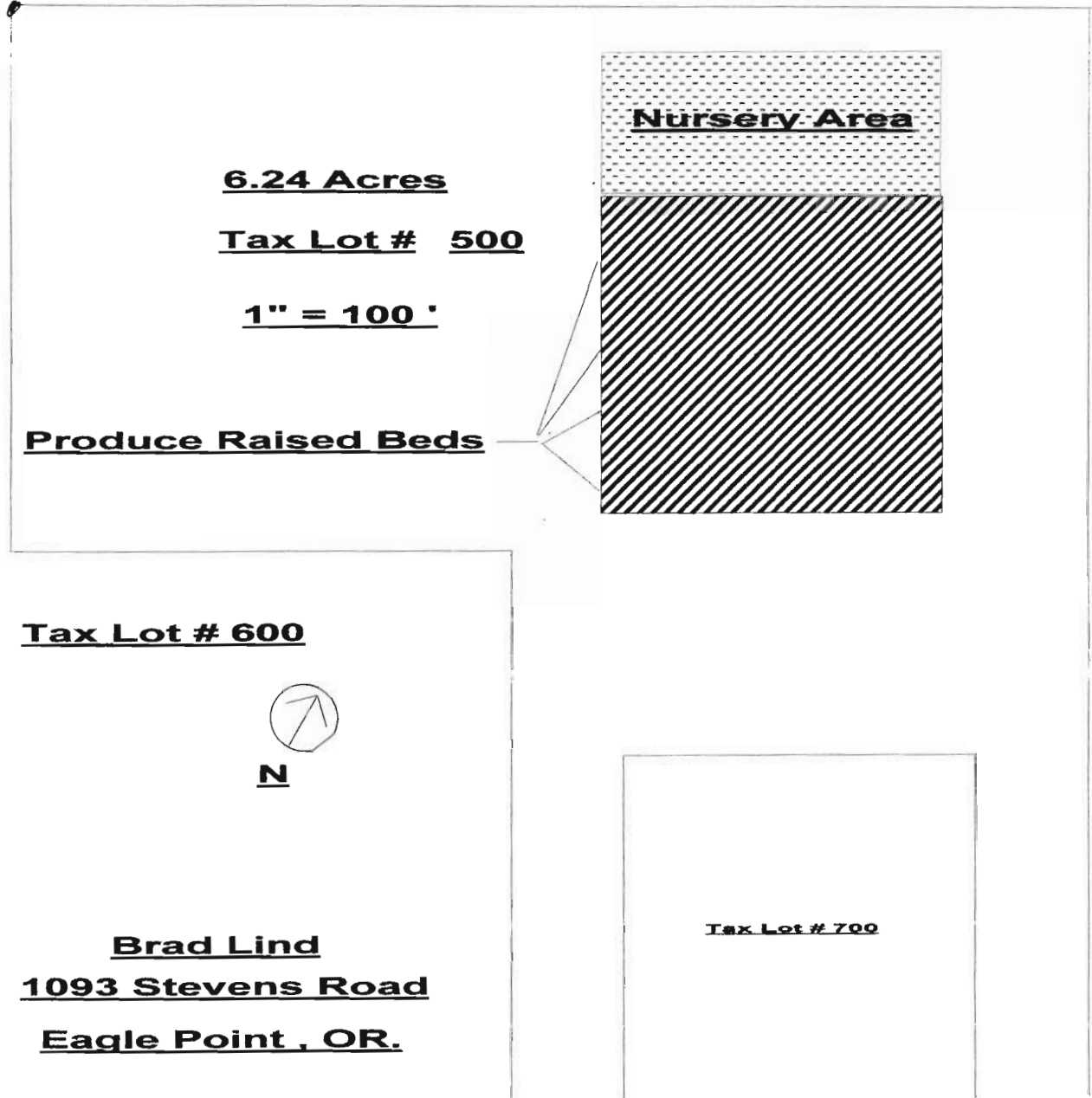
From Center 1/4 corner section 2

RECEIVED

JAN 26 2009

WATER RESOURCES DEPT  
SALEM, OREGON

SE 1/4 Sec 2 T36S R1W Wm

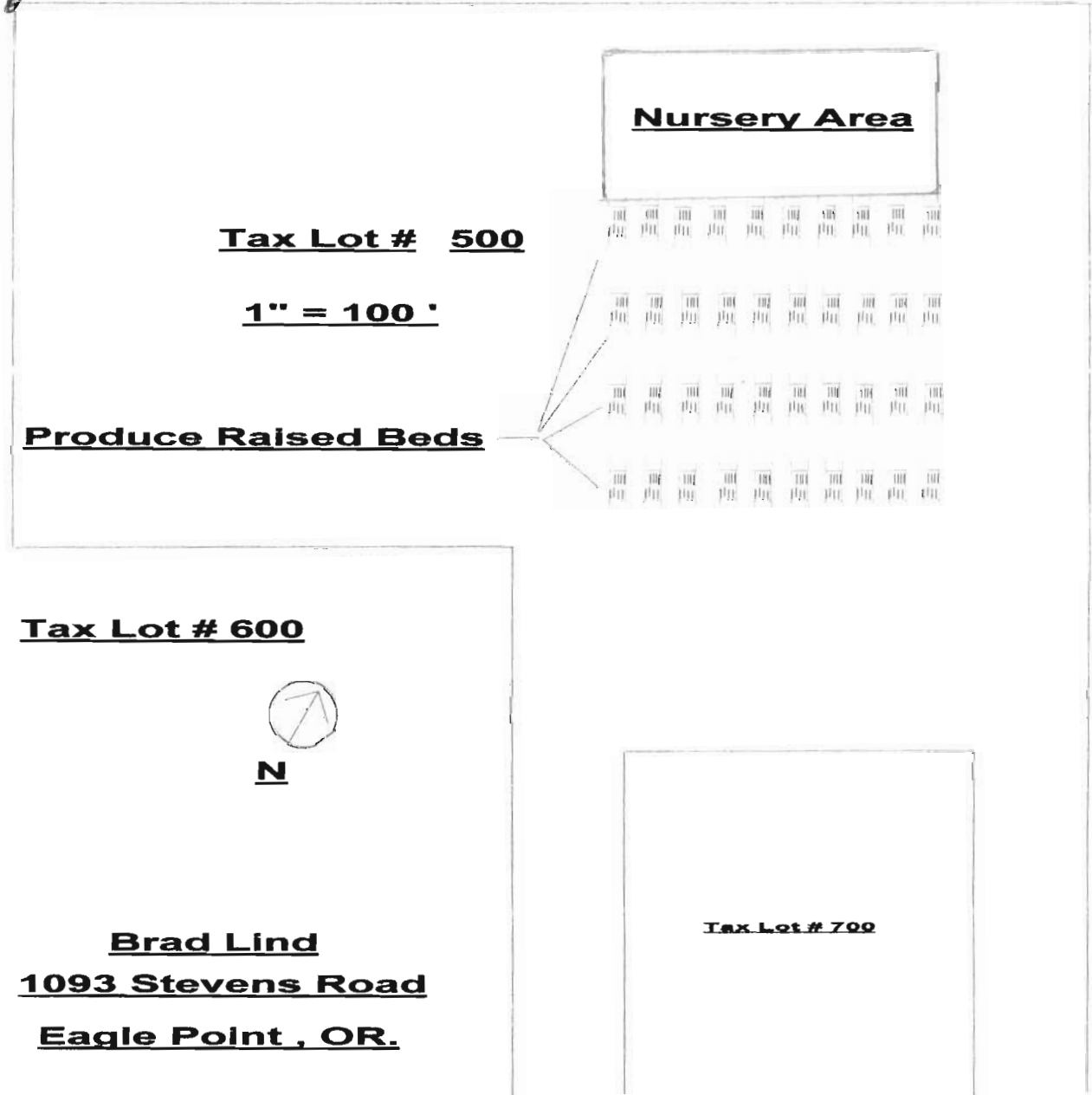


RECEIVED

JAN 26 2009

WATER RESOURCES DEPT  
SALEM, OREGON

SE 1/4 Sec 2 T36S R1W W.M.



**RECEIVED**  
 JAN 26 2009  
 WATER RESOURCES DEPT  
 SALEM, OREGON

**RECEIVED**  
 JAN 14 2009  
 WATER RESOURCES DEPT  
 SALEM, OREGON