

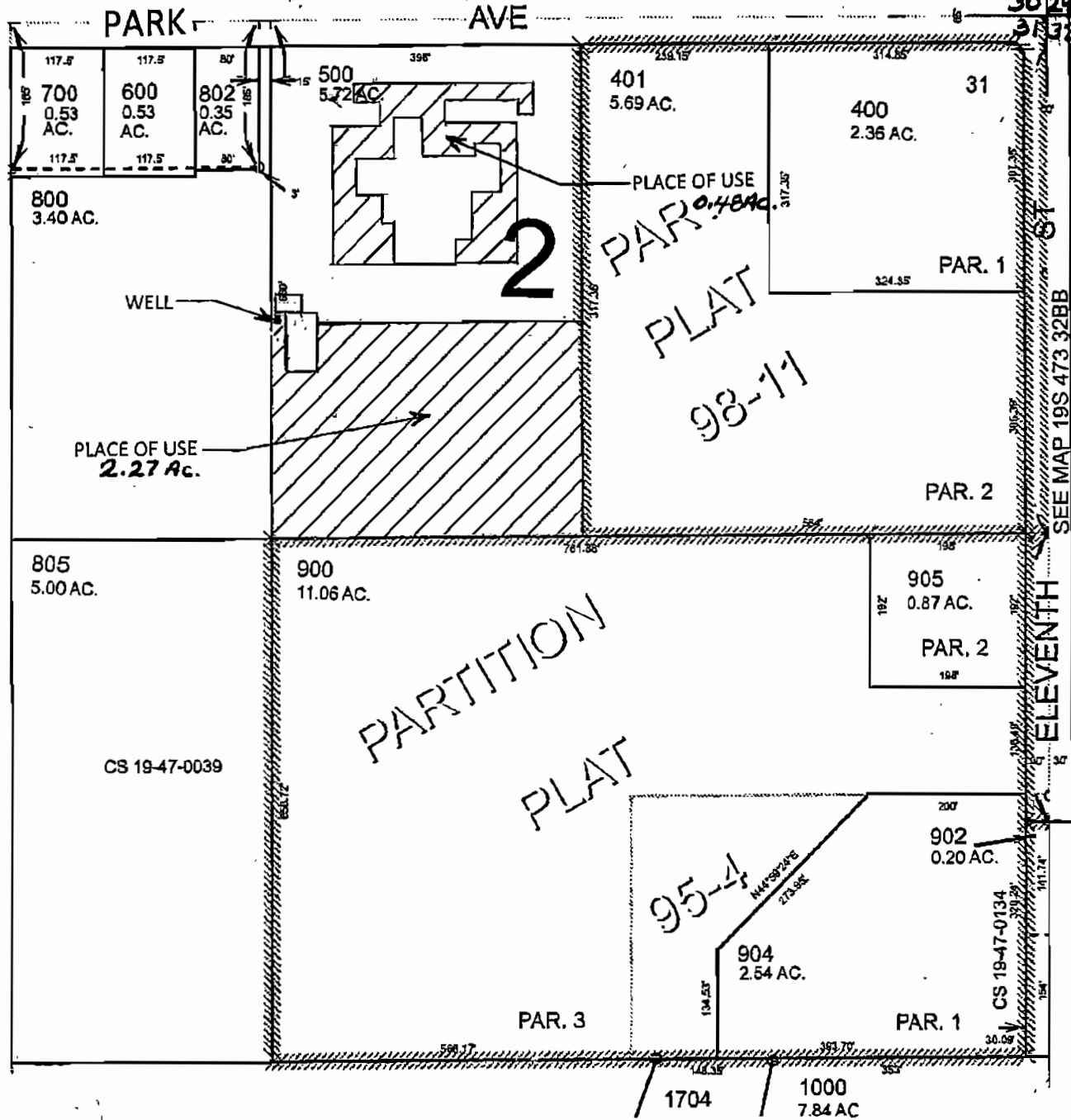
Township 19 South, Range 47 East, W.M.

NE 1/4 NE 1/4 of Section 31

Malheur County

Tax Lot 500

G-17130



WATER RIGHT APPLICATION MAP

To
 Appropriate Groundwater
 In the name of
 Corporation of the Presiding Bishop
 of
 The Church of Jesus Christ
 of
 Latter Day Saints, a Utah corporation sole

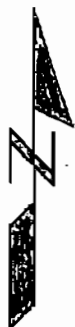
Well Located 375 ft. South
 and 983 ft. West From The
 NE Corner of Section 31

PLACE OF USE 

RECEIVED

JAN 26 2009

WATER RESOURCES DEPT
 SALEM, OREGON



SCALE 1" = 200'