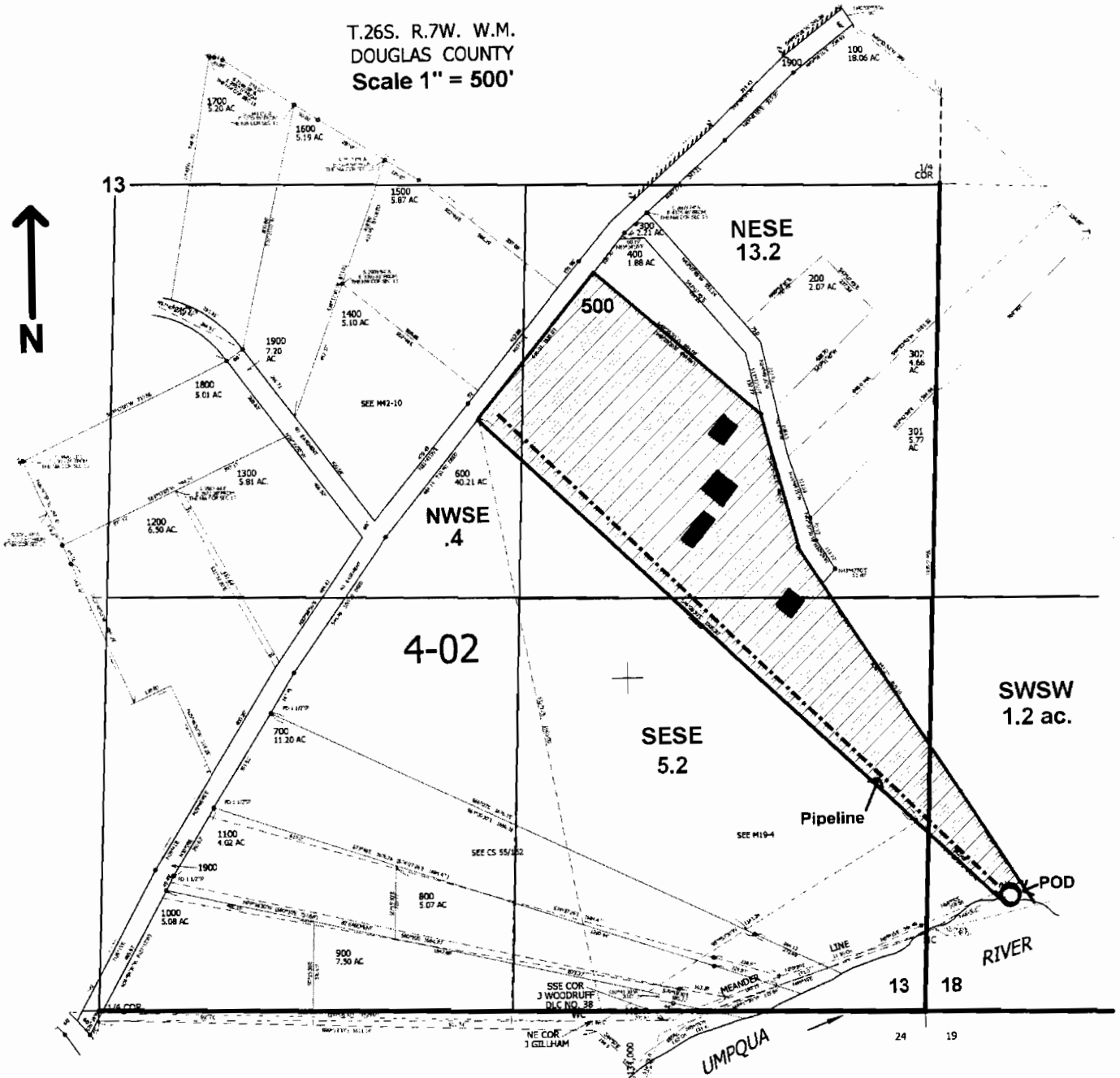


T.26S. R.7W. W.M.  
DOUGLAS COUNTY  
Scale 1" = 500'



POD located 375 ft. N. and 1250 ft. E. of the NE Corner of DLC 46 from Survey M 23-38.

**RECEIVED**  
FEB 02 2009  
WATER RESOURCES DEPT  
SALEM, OREGON