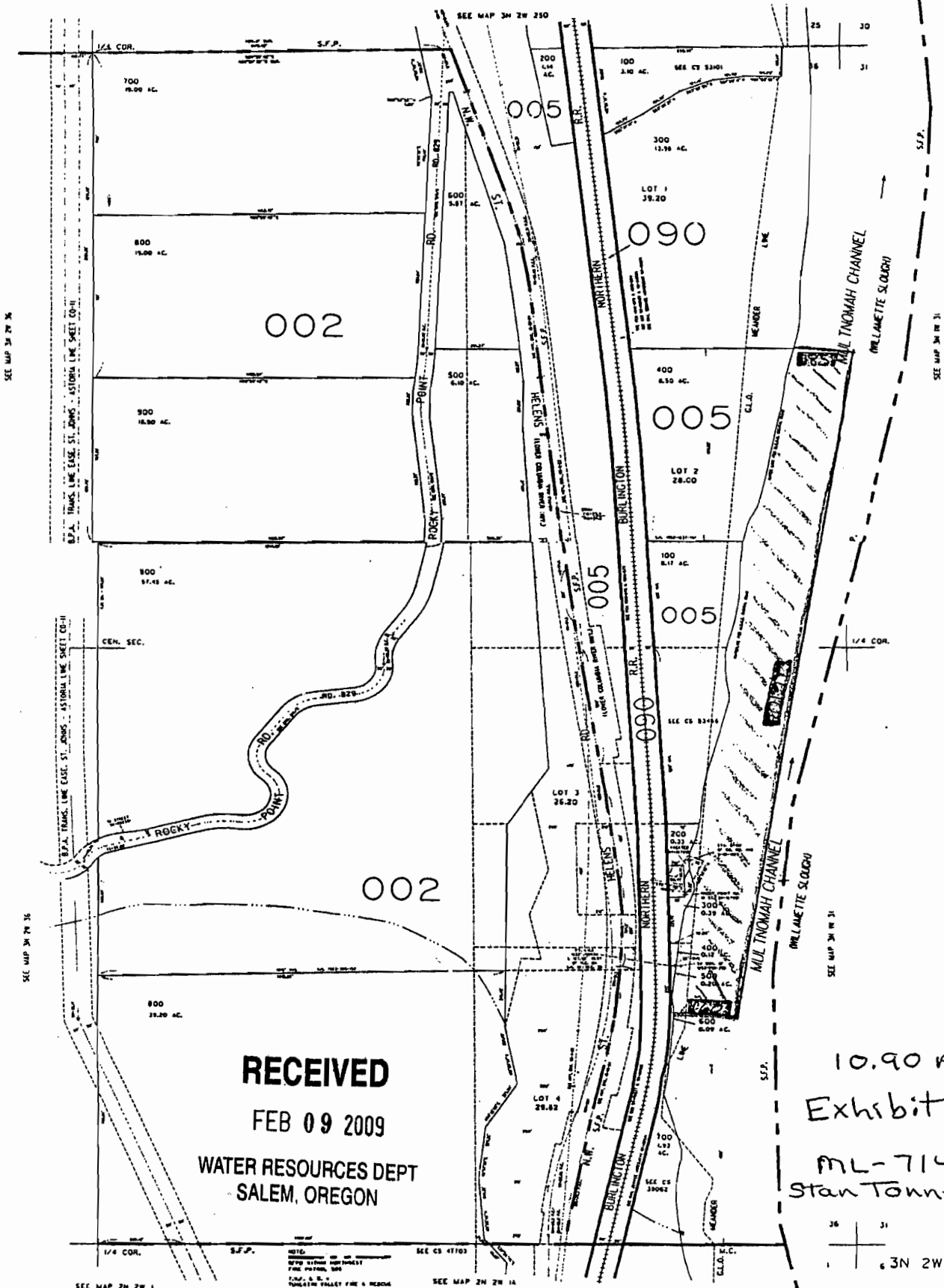


THIS MAP WAS PREPARED FOR ASSESSMENT PURPOSE ONLY

NE1/4 SEC. 36 T.3N. R.2W. W.M.  
MULTNOMAH COUNTY  
1" = 200'

3N 2W 36A



**RECEIVED**

FEB 09 2009

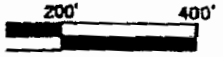
WATER RESOURCES DEPT  
SALEM, OREGON

10.90 Acres  
Exhibit "A"

ML-7146  
Stan Tonnason

3N 2W 36D

PAGE 02/05



WORK COPY

# SITE MAP ROCKY POINTE MARINA OF A PORTION OF E 1/2 OF SECTION 36 T.3N., R.2W., WILLAMETTE MERIDIAN MULTNOMAH COUNTY, OREGON

CLIENT:  
STAN TONNESON  
ROCKY POINTE MARINA  
23586 NW ST. HELENS ROAD  
PORTLAND, OR 97231  
(503) 543-7003

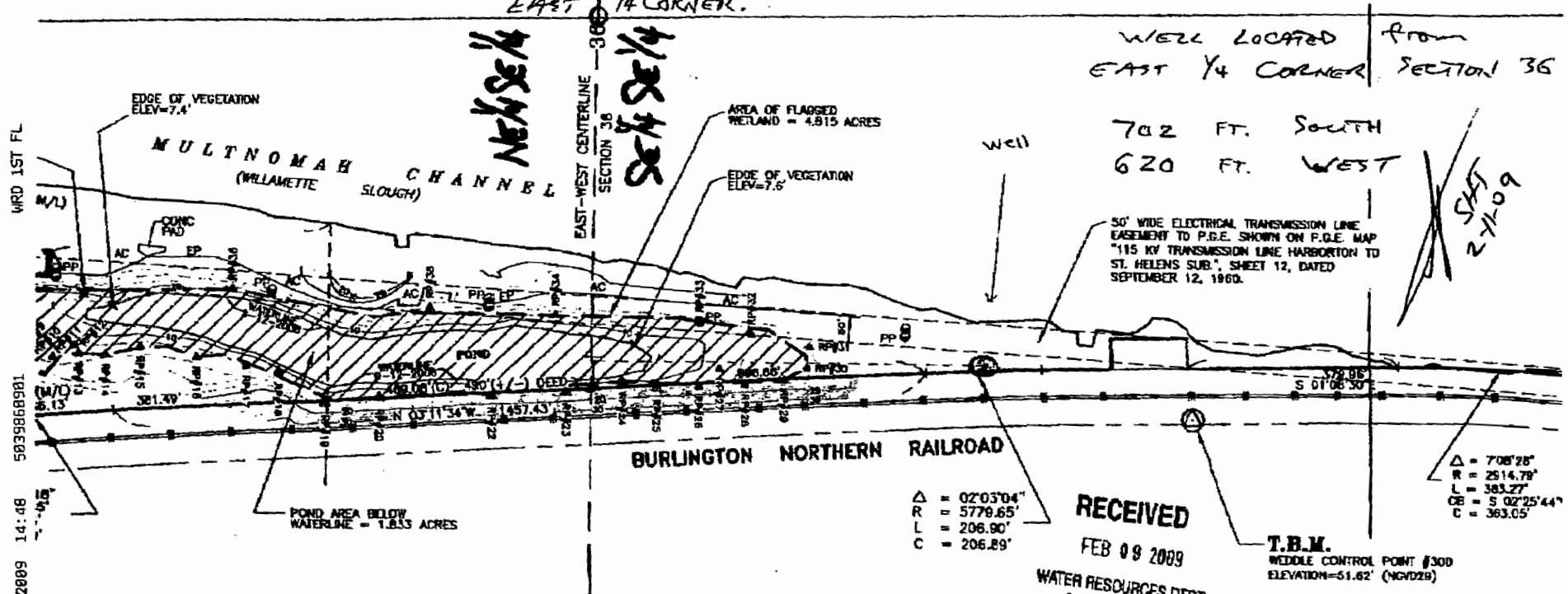
REQUESTED BY:  
GORDON DUNKELD  
WETLAND SPECIALIST  
(503) 952-6887

EAST 1/4 CORNER.

WELL LOCATED FROM  
EAST 1/4 CORNER SECTION 36

702 FT. SOUTH  
620 FT. WEST

~~601-2~~



50' WIDE ELECTRICAL TRANSMISSION LINE EASEMENT TO P.D.E. SHOWN ON P.G.E. MAP "115 KV TRANSMISSION LINE HARBORTON TO ST. HELENS SUB.", SHEET 12, DATED SEPTEMBER 12, 1960.

Δ = 02°03'04"  
R = 5779.65'  
L = 206.90'  
C = 206.89'

Δ = 708'28"  
R = 2514.79'  
L = 383.27'  
CB = 5°02'25".44"  
C = 383.05'

T.B.M.  
WEDDLE CONTROL POINT #300  
ELEVATION=51.62' (NGVD29)

RECEIVED  
FEB 09 2009

WATER RESOURCES DEPT  
SALEM, OREGON

RECEIVED  
FEB 12 2009

REGISTERED

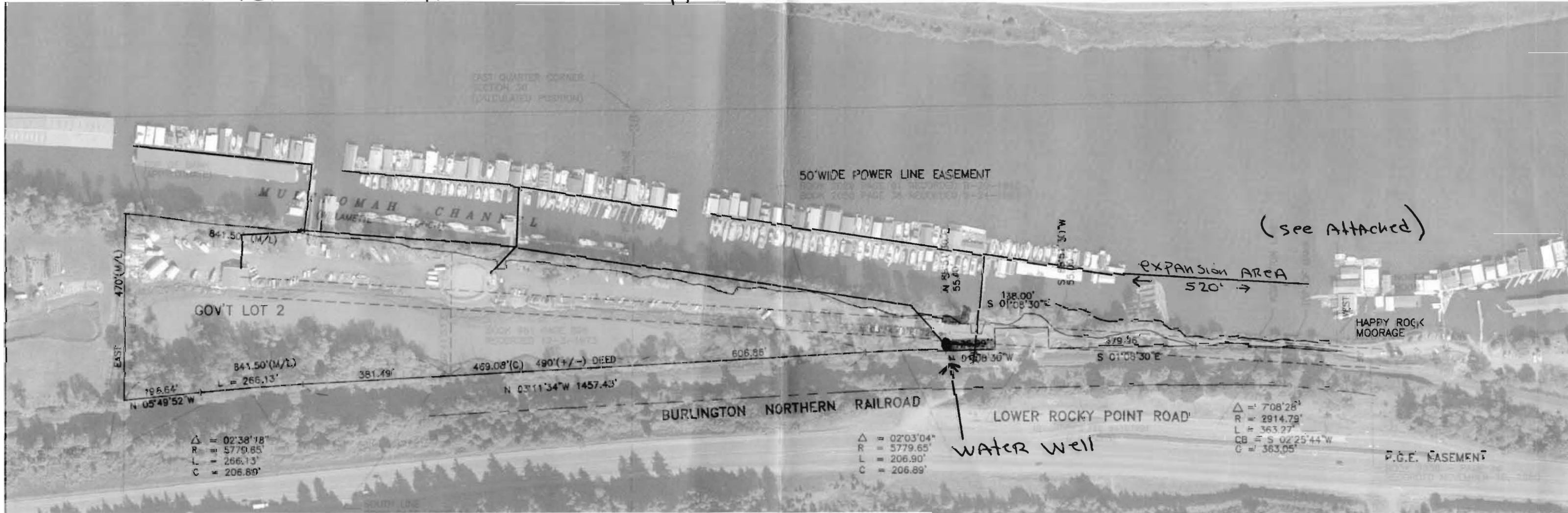
WILLAMETTE COUNTY  
SALEM, OREGON

02/11/2009 14:46  
SURVEY. PROPERTY LINES SHOWN HEREON ARE  
NUMBERS 2077, 3407, 3685 AND S.N. 53456  
Y.  
AS CONDUCTED BETWEEN SEPTEMBER 4TH

- LEGEND**
- ▲ #P#24 WETLAND DATA POINT
  - S.N. SURVEY NUMBER, MULTNOMAH COUNTY SURVEY RECORDS
  - ▨ FLAGGED WETLAND AREA (BY OTHERS)
  - AC ASPHALTIC CONCRETE



# Rocky Pointe MARINA - Water Supply Lines



——— WATER LINES  
 ■■■ IRRIGATED AREAS

RECEIVED

FEB 09 2009

WATER RESOURCES DEPT  
SALEM, OREGON