

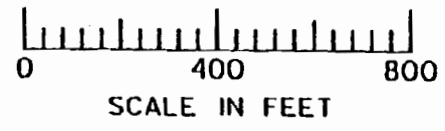
#1

Site #1 - Stone Water in a Reservoir App.
Reservoir Location = 2,040' S. + 652' W. from
the North 1/4 Corner of T.5N., R.27E.,
Sec. 20 SE NW

Tax Lot = 100 Morrow Co. 1" = 400'

Discription - Natural Wetland/Pond,
5.1 ac, Max Depth - 4.5',
22.95 af

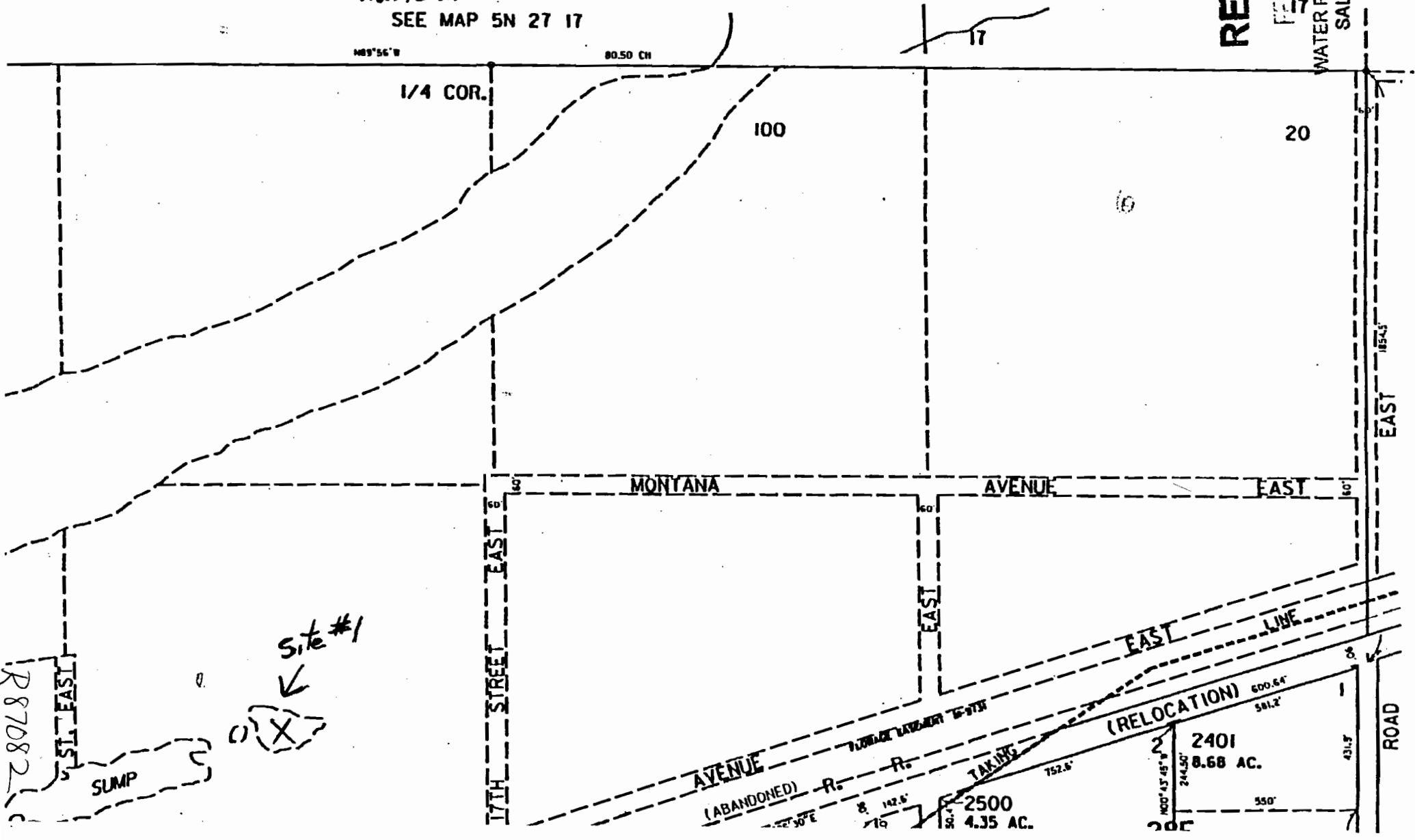
SEE MAP 5N 27 17



RECEIVED

FEB 13 2008

WATER RESOURCES DEPT
SALEM OREGON



R 87082

Site #1



SUMP

(ABANDONED) R. R. TAKING

2500
4.35 AC.

(RELOCATION) 600.64
581.2'

2401
8.68 AC.

ROAD