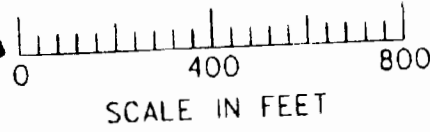


THIS MAP WAS PREPARED FOR  
ASSESSMENT PURPOSE ONLY

Site #4 - Store Water in a Reservoir App  
Reservoir Location = 1,887' E. + 861' N.  
from the SW Corner of T.5N,  
R.27E., Section 16 SE SW

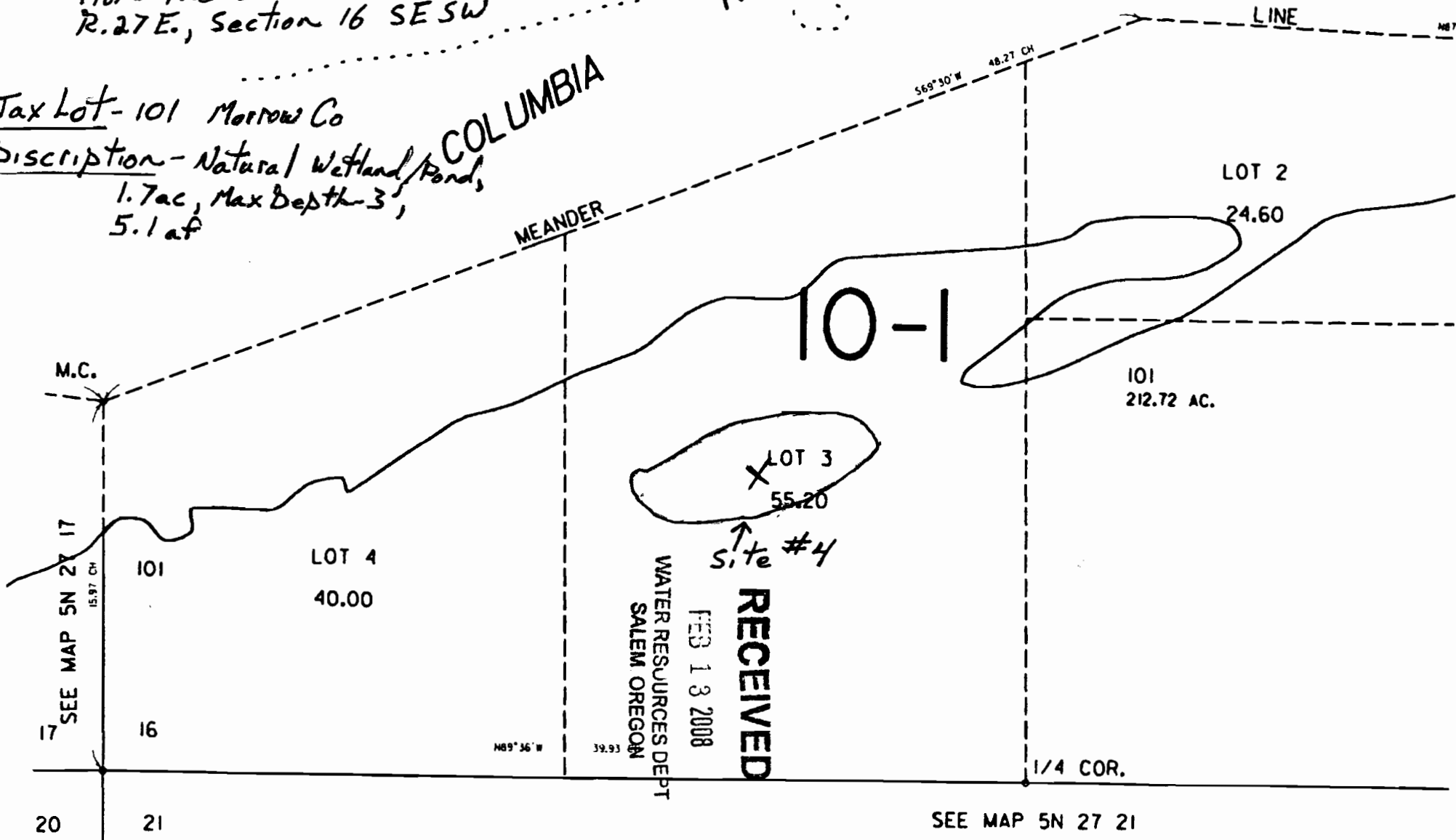


R87085

Tax Lot - 101 Morrow Co

Description - Natural Wetland/Pond,  
1.7 ac, Max Depth - 3',  
5.1 af

COLUMBIA



WATER RESOURCES DEPT  
SALEM OREGON  
FEB 13 2008  
**RECEIVED**

Site #4

SEE MAP 5N 27 21

20 21

SEE MAP 5N 27 17