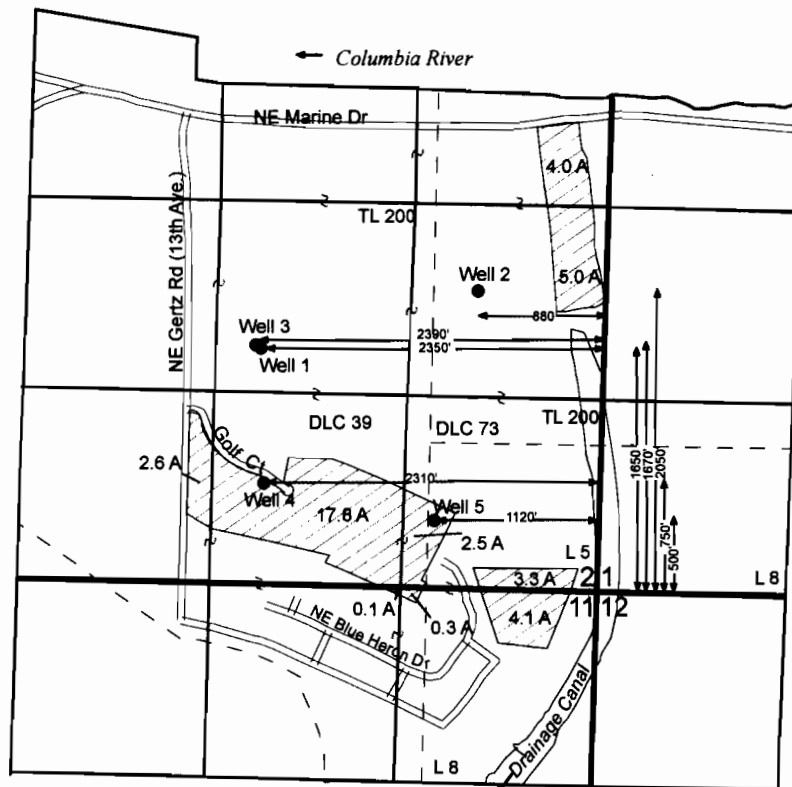


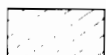
T1N, R1E, Section 2, WM Multnomah County Application Map



RECEIVED

FEB 23 2009

WATER RESOURCES DEPT
SALEM, OREGON

 Proposed Place of Use (39.7 Acres)

THIS MAP IS NOT INTENDED TO
PROVIDE LEGAL DIMENSIONS OR
LOCATIONS OF PROPERTY
OWNERSHIP LINES.

December 9, 2008



1 inch = 1,320 feet

FIGURE 1

**Columbia Edgewater
Country Club**