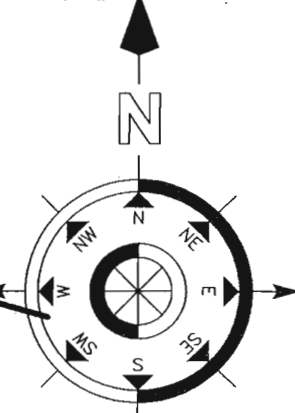


LOCATED IN: WEST HALF OF SEC. 16, TWP. 9S
RANGE. 1E., WILL. MER., MARION COUNTY, OREGON

COUNTY: MARION
BASIN 2
17674 N. SANTIAM HWY
STAYTON, OREGON
TAX LOT 200 9-1E-16

WATER RIGHT APPLICATION MAP TO APPROPRIATE
GROUND WATER TO KENNETH AND DARLA RASMUSSEN
FEB. 2009



SCALE: 1" = 400'

TL 100

TL 200

TL 500

TL 300

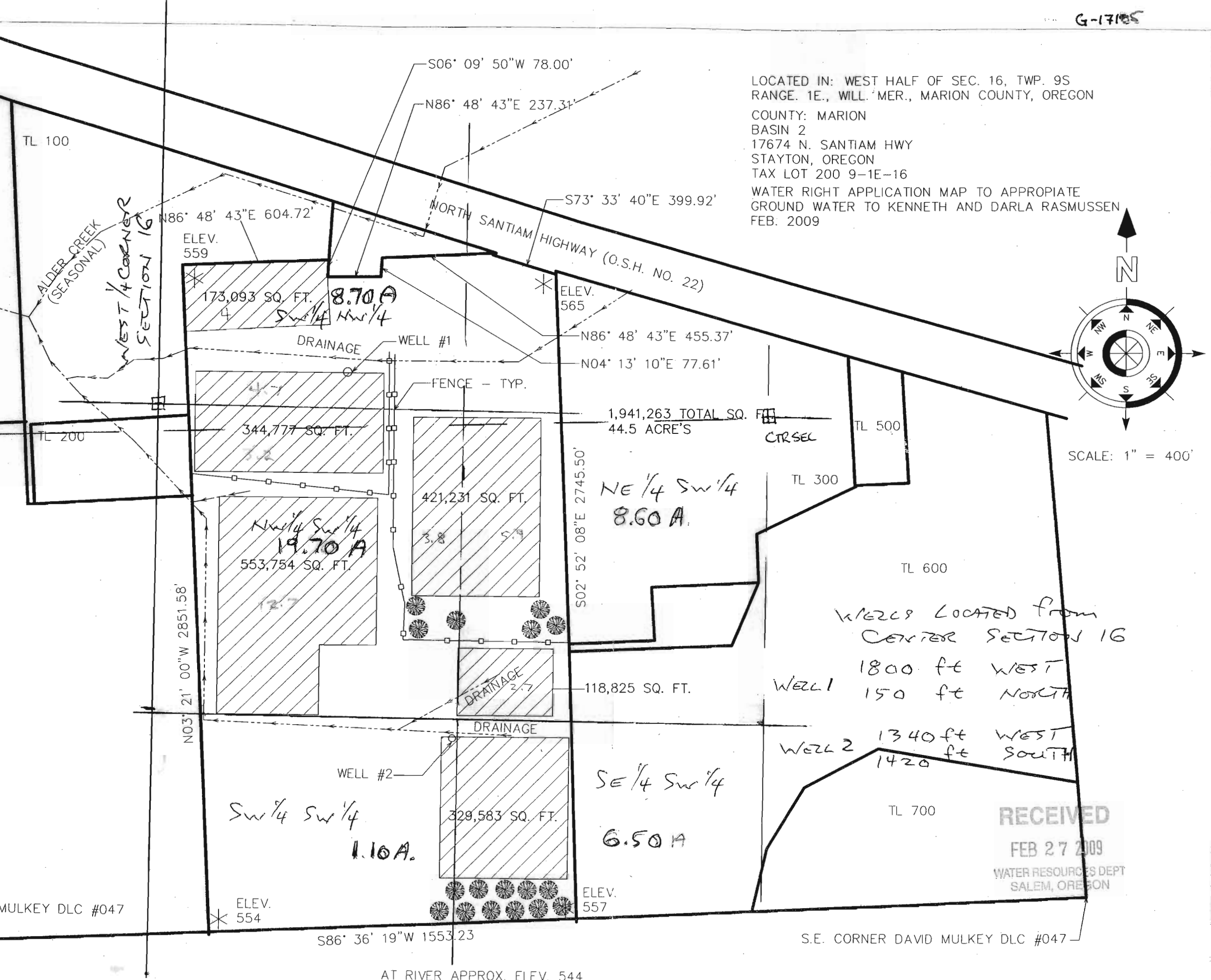
TL 600

TL 700

MULKEY DLC #047

S.E. CORNER DAVID MULKEY DLC #047

AT RIVER APPROX. ELEV. 544



RECEIVED
FEB 27 2009
WATER RESOURCES DEPT
SALEM, OREGON

RECEIVED 01/07/2008 BY
 MARION COUNTY SURVEYOR
 APPROVED FOR FILING ON
 02/19/2008

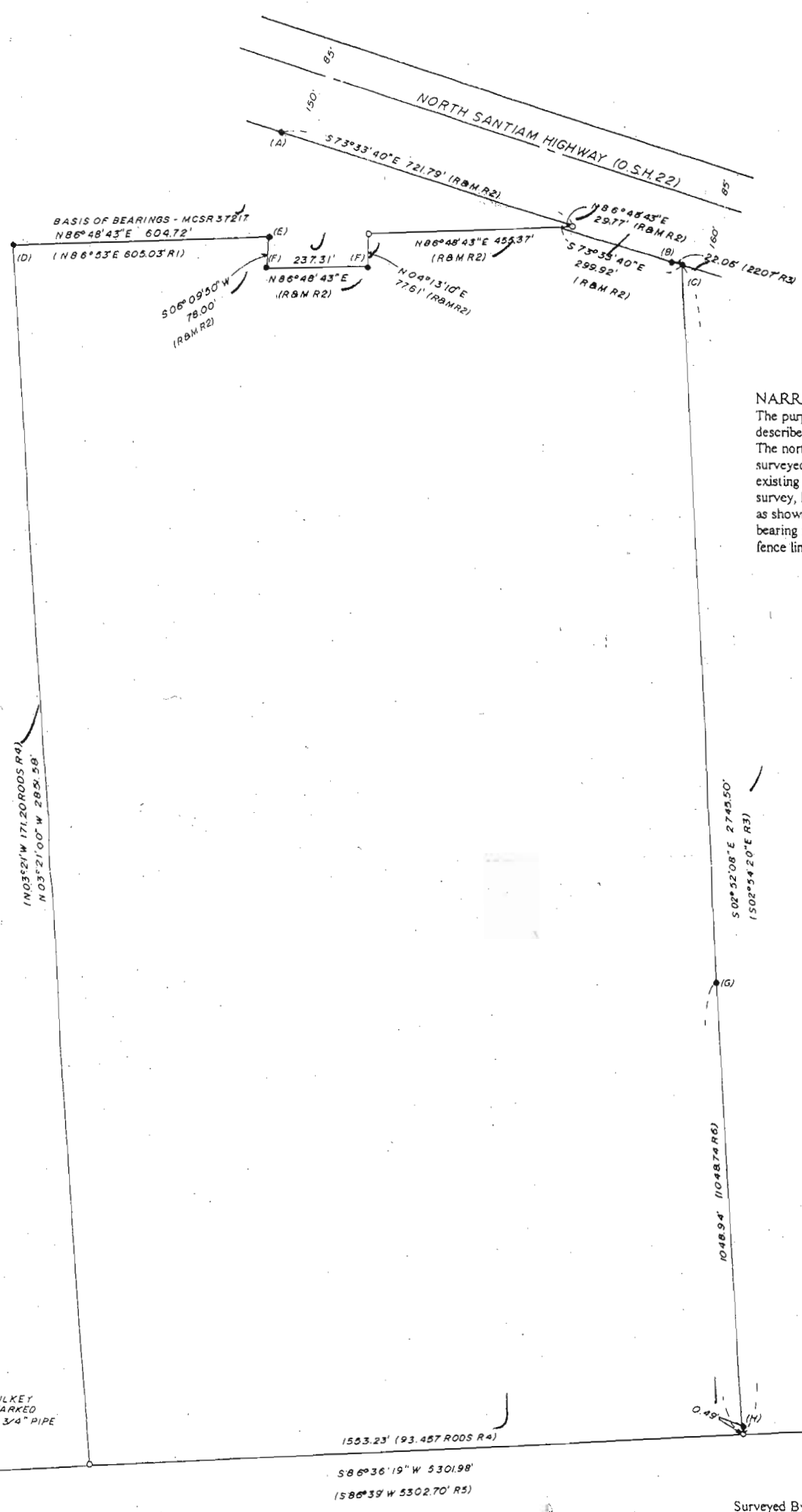
RECEIVED
FEB 27 2009
 WATER RESOURCES DEPT
 SALEM, OREGON

BOUNDARY SURVEY

LOCATED IN: WEST HALF OF SEC. 16, TWP. 9 S.,
 RGE. 1 E., WILL. MER., MARION COUNTY, OREGON.

SURVEYED FOR: KEN RASMUSSEN

September 22, 2007



NARRATIVE

The purpose of this survey is to monument the corners for that tract of land as described in Reel 1269, Page 593. The north line was held as surveyed in MCSR 37217. The east line was surveyed in MCSR 23204 from (C) to (H) where Robert Gorman held to an existing fence line. Since the line has been acquiesced to since before that survey, I held the line from (C) to (H) and extended it south to the D.L.C. line as shown. The south line was held to the D.L.C. line as shown. The deed bearing for the west line was held from (D) and this matched the existing fence line exactly.

LEGEND

- - MONUMENT FOUND
- (A) - 5/8" REBAR DOWN 4", SEE MCSR 27510
- (B) - 5/8" REBAR DOWN 6", HIGHWAY RIGHT OF WAY
- (C) - 5/8" REBAR UP 2", SEE MCSR 23204
- (D) - STONE MARKED "CS" ON WEST SIDE ON WEST SIDE OF FENCE CORNER POST, SEE MCSR 27510
- (E) - 1" IRON BAR DOWN 2", SEE MCSR 27510
- (F) - 3/8" REBAR WITH YELLOW PLASTIC CAP MARKED "ANDREWS RLS 1626", MCSR 37217
- (G) - 5/8" REBAR FLUSH, MCSR 27425, 0.17' EAST OF LINE
- (H) - 5/8" REBAR FLUSH BADLEY BENT, SPUN & TIED HELD FOR EAST LINE, MCSR 27425
- - SET 5/8" X 30" REBAR WITH YELLOW PLASTIC CAP MARKED "ANDREWS RLS 1626"
- R&M - RECORD & MEASURED
- () - RECORD DATA
- R1 - MCSR 27510
- R2 - MCSR 37217
- R3 - MCSR 23204
- R4 - REEL 1269, PAGE 593
- R5 - MCSR 19208
- R6 - MCSR 27425



S.W. CORNER DAVID MULKEY
 D.L.C. 47, STONE UP 4" MARKED
 "C 47" WITH BADLY BENT 3/4" PIPE
 ON EAST SIDE

S.E. CORNER DAVID MULKEY
 D.L.C. 47, 1/2" CRIMPED PIPE
 FLUSH, SEE MCSR 19208

Surveyed By:
 James Andrews Surveying
 P.O. Box 514
 45905 Lyons-Mill City Drive
 Lyons, Oregon 97358
 Ph. 503-859-2653

REGISTERED
 PROFESSIONAL
 LAND SURVEYOR

OREGON
 JULY 14, 1978
 JAMES E. ANDREWS
 1628

EXPIRES 12/31/07

MCSR 37378

LEGEND

LINE TYPES

- TAX LOT BOUNDARY OLD PROPERTY LINE
- ROAD RIGHT-OF-WAY VACATED RIGHT-OF-WAY
- RAILROAD RAILROAD RIGHT-OF-WAY
- STREAM, LAKE, ETC. TAX LOT BOUNDARY STREAM, LAKE, ETC. NON-BOUNDARY
- SUBDIVISION BOUNDARY PARTITION PLAT BDY.
- TAX CODE BOUNDARY EASEMENT

SYMBOL TYPES

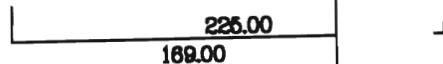
- D.L.C.
- CONTROL POINTS
- SURVEY MONUMENTS
- G.L.O. CORNERS
- SECTION 1/4 SEC 1/16 SEC
- 1/4 COR 1/16 COR

NUMBERS

TAX CODE NO. 000 00 00 0

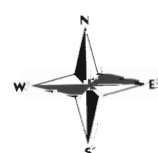
ACREAGE - ALL ACREAGES EXCLUDE ANY PORTION THAT MAY LIE WITHIN THE INDICATED PUBLIC RIGHT OF WAYS.

TICK MARKS - WHEN A TICK MARK IS INDICATED ON THE EXTENSION OF A LINE, THEN THE DIMENSION GOES TO THE TICK MARK. GENERALLY THIS IS USED WHEN DIMENSIONS GO INTO PUBLIC RIGHT OF WAYS.



ARROWS ARE USED WITH DIMENSIONS IN AREAS OF GREATER COMPLEXITY.

NOTICE: This map was created for Assessor's Office use ONLY.



SCALE 1" = 460'

Plot file created: January 24, 2008

/s:/image/091e16.tif kliehto

