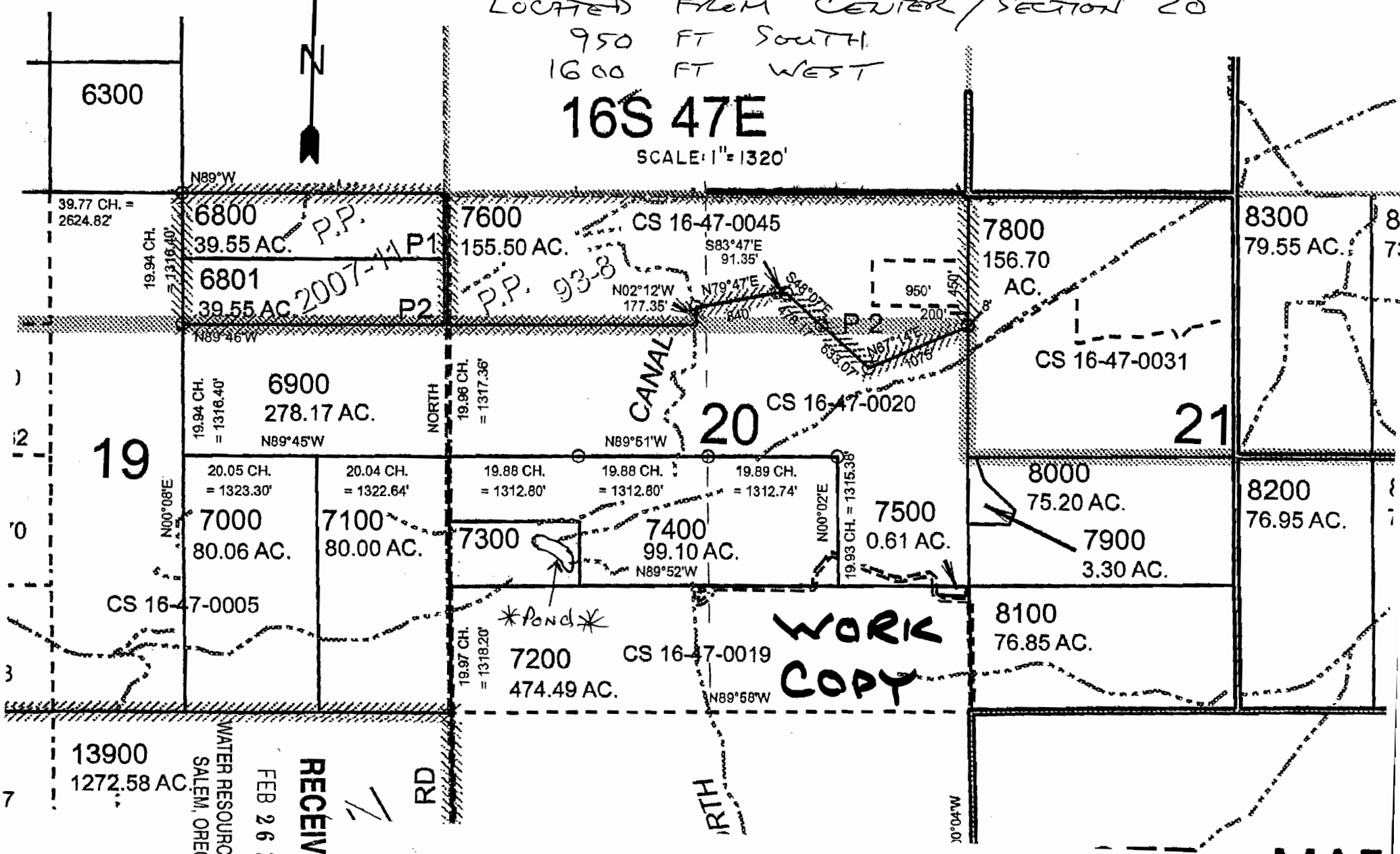


CENTER of RESERVOIR  
LOCATED FROM CENTER / SECTION 20  
950 FT SOUTH  
1600 FT WEST

16S 47E

SCALE: 1" = 1320'

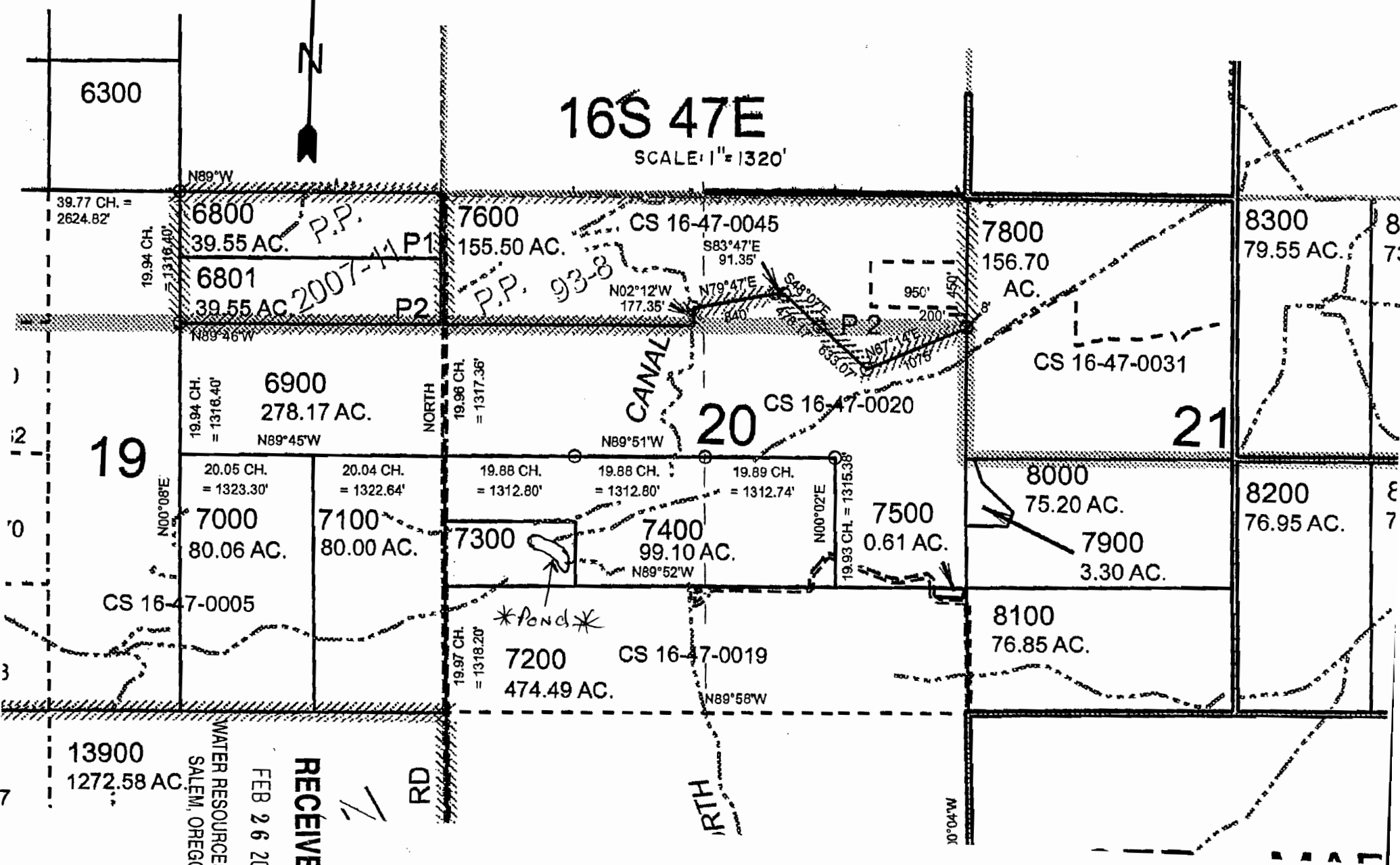


RECEIVED  
FEB 26 2009  
WATER RESOURCES DEPT  
SALEM, OREGON

WORK COPY

# 16S 47E

SCALE: 1" = 1320'

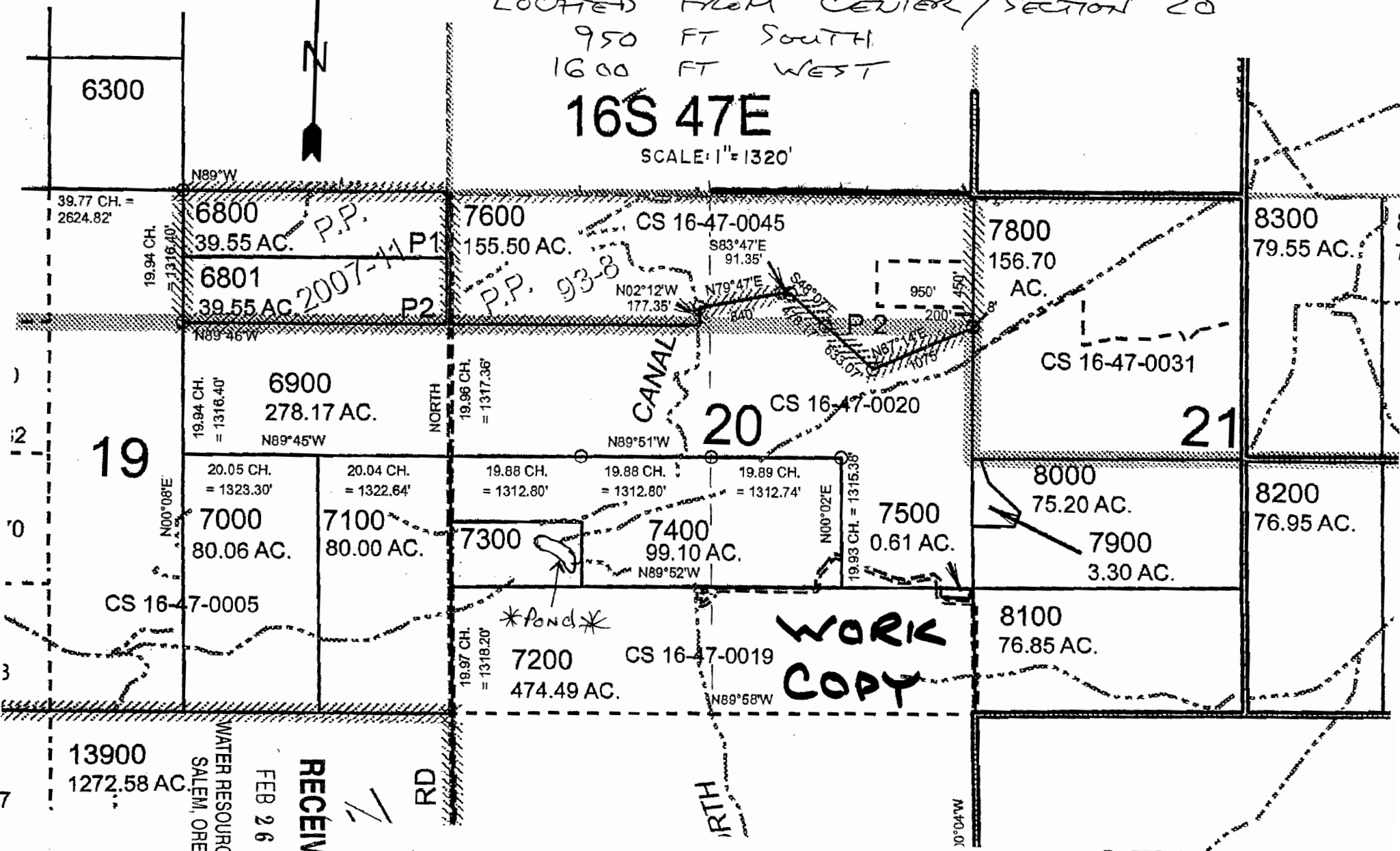


**RECEIVED**  
 FEB 26 2009  
 WATER RESOURCES DEPT  
 SALEM, OREGON

CENTER of RESERVOIR  
LOCATED FROM CENTER / SECTION 20  
950 FT SOUTH  
1600 FT WEST

16S 47E

SCALE: 1" = 1320'



RECEIVED  
FEB 26 2009  
WATER RESOURCES DEPT  
SALEM, OREGON

RD

IRTH

WADOR

WORK COPY